

# "CWC" BUSSING CART

*Wire Framed w/Chrome Plating*

**FEATURES:**

- Chrome Plated Wire Shelves, 36"x18"
- (3) Adjustable Shelves
- 1" Diameter Numbered Posts For Easy Shelf Height Adjustments
- (4) 3" Locking Casters With Bumpers



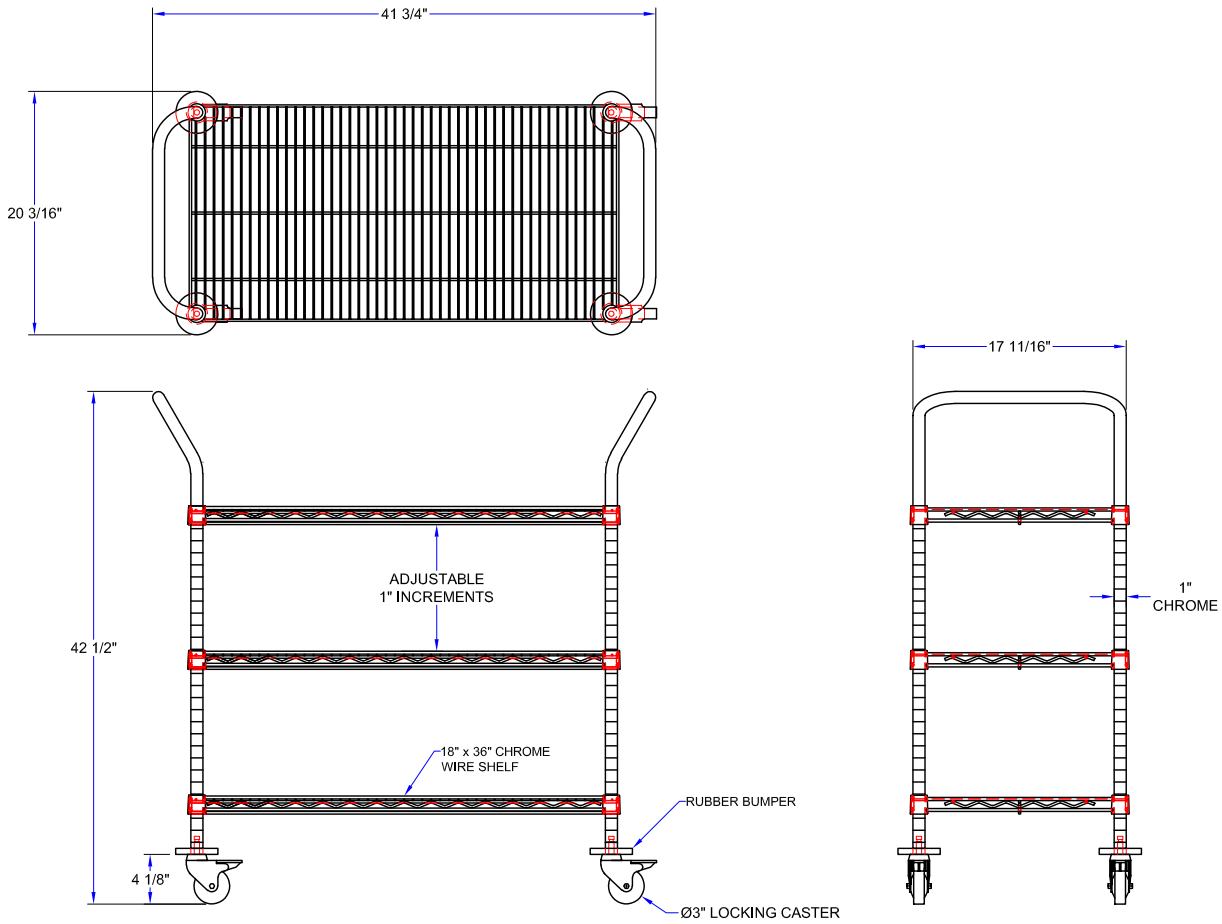
CWC-1836-3

## "CWC" BUSSING CART

MODEL	# OF SHELVES	SIZE (LXWXH)	WT (LBS)
CWC-1836-3	3	36"x18"x42-1/2"	45

ALL DIMENSIONS ARE TYPICAL. TOLERANCE +/- .500". JOHN BOOS & CO. RESERVES THE RIGHT TO CHANGE SPECIFICATIONS WITHOUT NOTICE.

# DETAILED SPECIFICATIONS



## "CWC" BUSSING CART

MODEL	# OF SHELVES	SIZE (LXWXH)	WT (LBS)
CWC-1836-3	3	36"x18"x42-1/2"	45

ALL DIMENSIONS ARE TYPICAL. TOLERANCE +/- .500". JOHN BOOS & CO. RESERVES THE RIGHT TO CHANGE SPECIFICATIONS WITHOUT NOTICE.