



## VALPRO COMMERCIAL REFRIGERATION

203 Kelsey Ln., Building G

Tampa, FL 33619

813-502-0300

Toll Free 1-888-VALPRO-8

[www.ValproRefrigeration.com](http://www.ValproRefrigeration.com)

[sales@ValproRefrigeration.com](mailto:sales@ValproRefrigeration.com)

PROJECT:

MODEL #:

ITEM #:

QTY:

AVAILABLE W/H:

APPROVAL:

# REACH-IN SOLID DOOR FREEZER

MODEL: **VP19F-HC**

We are proud to introduce the beautifully constructed **Valpro VP19F-HC**. All our models are manufactured with uncompromising quality, energy efficient technology, and standard premium features built in. This model will provide many years of worry free service and delivers cost saving eco-friendly energy efficiency. All models are energy verified and deliver the lowest operating costs. All Valpro products are manufactured under strict ISO9001 standards for quality assurance, and to consistently deliver to our customers products that satisfy all expectations. All our products are operated, extensively monitored, and undergo rigorous inspection prior to packaging and shipping.

## KEY FEATURES

- Durable stainless steel exterior, and 304 stainless interior cabinet
- High efficiency bottom mounted condensing unit installed on slide out rack for quick and easy maintenance
- Bottom mount compressor operates in coolest area possible and provides better efficiency and ergonomics
- Uniform temperature with larger efficient ECM fan motors and larger fan blades for superior air flow with faster recovery time
- 3 Heavy duty, epoxy coated wire shelves supported by pilasters for easy 1/2" adjustability and to sustain maximum loads
- Field reversible door
- Self closing door with remain open feature past 90° for easy access loading and unloading
- Top mount quality door lock for added security
- Door open warning alarm
- Snap-in magnetic door gaskets removable and replaceable without tools for ease of cleaning
- LED interior cabinet lights standard all on models
- Electronic thermostat digitally controlled temperature system maintains optimum temperature with easily viewed LED display
- Standard 4" heavy duty casters, front locking, make it easy to move and clean underneath
- Self-contained refrigeration system uses environmentally responsible hydrocarbon R290 refrigerant
- Automatic condensate evaporation system
- Door integrated heating element eliminates any condensation
- High density 2.4" foamed in-place CFC free polyurethane insulation
- Energy Verified efficiency and ETL certified to NSF Standard 7



Intertek



Intertek



\* Compressor warranty 2 year parts & labor / 3 additional year warranty compressor part only

## Technical Data

### Dimensional Data

Exterior Dimensions	26.8"W x 25.6"D x 82.3"H
Interior Dimensions	22.2"W x 20.5"D x 50.2"H
Net Storage Capacity	19 cu. ft.
Net Weight	225 lbs.
Crated Weight	295 lbs.
Shipping Dimensions	29.9"W x 27"D x 84.6"H

### Refrigeration Data

Temperature Range	-10°F to +10°F
Refrigerant	R-290
Refrigerating System	Capillary Tube
Temperature Controller	Digital
Horsepower	2/5

### Construction Data

Exterior Material	430 Series Stainless Steel
Interior Floor Material	304 Series Stainless Steel
Interior Wall Material	304 Series Stainless Steel
Insulation	2.4" CFC Free Polyurethane
Shelves	3 Heavy Duty Epoxy Coated

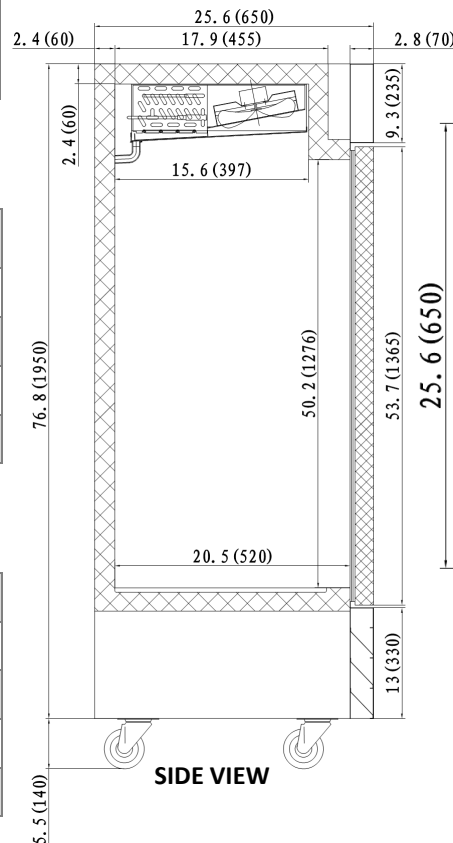
### Electrical Data

Interior Lighting	Efficient LED
Amps	3
Voltage / Frequency / Phase	115V/60Hz/1
Plug Type	NEMA 5-15P
Electrical Cord Length	9 ft.

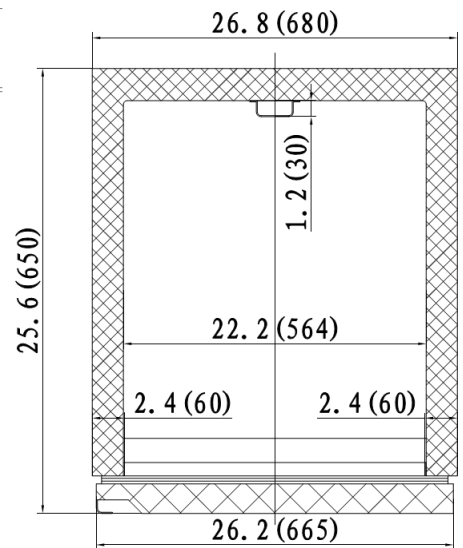
Specifications subject to change without notice.



FRONT VIEW



SIDE VIEW



PLAN VIEW

