

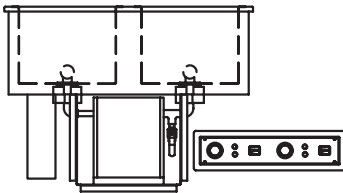
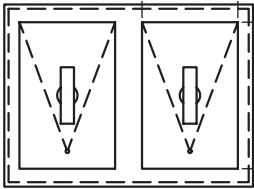
Project \_\_\_\_\_  
Item \_\_\_\_\_  
Quantity \_\_\_\_\_  
CSI Section 11400  
Approved \_\_\_\_\_  
Date \_\_\_\_\_

# N8600-FWP FlexiWell

Individually controlled Hot & Cold Combination Pan

## Models

- N8618-FWP 18" hot & cold combination pan drop-in
- N8635-FWP 35" hot & cold combination pan drop-in
- N8652-FWP 52" hot & cold combination pan drop-in
- N8669-FWP 69" hot & cold combination pan drop-in
- N8686-FWP 86" hot & cold combination pan drop-in
- N86103-FWP 103" hot & cold combination pan drop-in



N8635-FWP

## Standard Features

- NSF-4 and NSF-7 certified for hot and cold operation
- Stainless steel immersion heaters - one per well
- Wells operate independently for hot or cold operation and vice versa
- Electronic temperature control
- Adjustable pan support for flush mounted hot operation or 2" recessed cold operation
- 1" stainless steel drain with screen
- Stainless steel louver provided
- High density environmentally friendly, Kyoto Protocol compliant, Non ODP (Ozone Depletion Potential), Non GWP (Global Warming Potential) polyurethane foam throughout
- Push-in flange gasket is standard
- Adaptor bars for 12"x20" pans provided
- Environmentally friendly R290 refrigerant
- 2 year parts and labor warranty standard parts warranty

## Options & Accessories

- Adapter bars

## Specifications

**Top:** Top is constructed of one-piece stainless steel.

**Interior:** Interior liner is constructed of stainless steel with a 1" (2.5cm) drain. Adjustable stainless steel pan rest for flush mount heating or 2" (5cm) recessed cooling to accommodate up to 6" (15cm) deep 12"x20" pans, supplied by others. Stainless steel immersion heater(s) installed in bottom for wet only heating operation.

**Exterior:** Exterior body is constructed of galvanized steel with high density environmentally friendly, Kyoto Protocol compliant, Non ODP (Ozone Depletion Potential), Non GWP (Global Warming Potential) polyurethane insulation throughout.

**Refrigeration:** Condensing unit is suspended on a galvanized steel frame. Environmentally friendly R290 refrigerant is utilized. Temperature controlled by thermostat located next to condensing unit.

**Operation:** Remote control panel contains 3-way Hot/Cold/Off power switch and thermostat for heated operation. As a safety feature, the food well immersion heater includes a high limit safety switch. If the heater gets too hot the safety switch will trip, turn the heater off and illuminate a control panel pilot light.

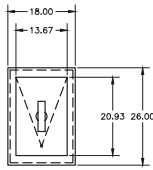
**Electrical:** All units must be hard wired at installation.

Louver and cutout dimensions 20"x23.5"

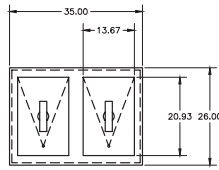


R290

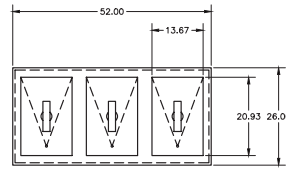
N8600-FWP: Individually controlled Hot & Cold Combination Pan



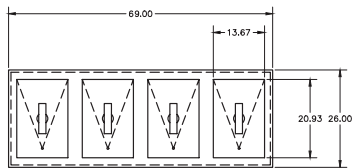
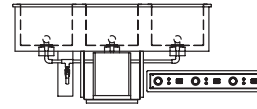
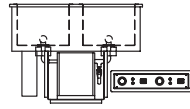
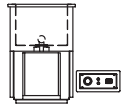
N8618-FWP



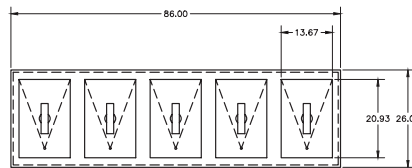
N8635-FWP



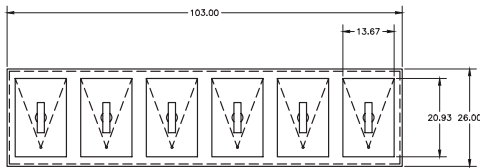
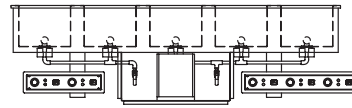
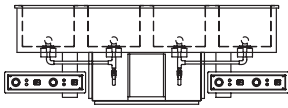
N8652-FWP



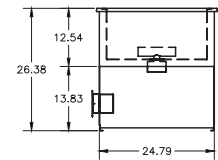
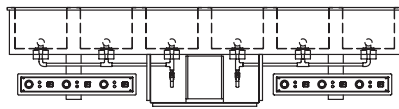
N8669-FWP



N8686-FWP



N86103-FWP



Model	12"x20" Pan Capacity	Hot Electrical	Cutout Dimensions	Cold Electrical	BTU Load	System Capacity
N8618-FWP	1	1500W - 208-240V-6.3A	17" x 25"	120V - 2.9A - 1/5 H.P	310	625
N8635-FWP	2	(2) 1500W - 208-240V-12.5A	34" x 25"	120V - 2.9A - 1/5 H.P	620	906
N8652-FWP	3	(3) 1500W - 208-240V-18.8A	51" x 25"	120V - 2.9A - 1/5 H.P	929	1066
N8669-FWP	4	(4) 1500W - 208-240V-25A	68" x 25"	120V - 5.7A - (2) 1/5HP	1239	1812
N8686-FWP	5	(5) 1500W - 208-240V-31.3A	85" x 25"	120V - 5.7A - (2) 1/5HP	1549	1972
N86103-FWP	6	(6) 1500W - 208-240V-37.5A	102" x 25"	120V - 5.7A - (2) 1/5HP	1859	2132

Welbilt reserves the right to make changes to the design or specifications without prior notice.