

COMPACT LINE ESPRESSO COFFEE MACHINES



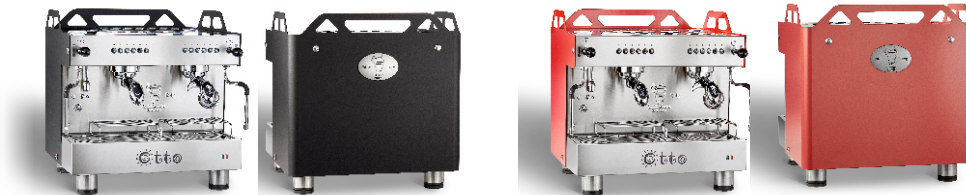
MADE IN ITALY



OTTOCDE2IS4

- Combines the practicality of a compact machine with the production capacity of a 2 groups espresso coffee machine, it comes standard with 2 manual steam output. The thermal stability and productivity are guaranteed by a heating system that keeps a constant coffee temperature in case of maximum use. Special grids placed under the groups allow to use cups of height up to 13cm as well as the traditional espresso cups.
- Thermostated groups: equipped with 100W resistance to maintain a constant temperature even under conditions of maximum use.
- 8 liters copper boiler: ensures optimum productivity of steam and hot water through a resistance of 2800W.
- It works with a motor-pump and the groups have electronically regulated solenoid valves. With the electronic dosage you can obtain 4 different doses of coffee with constant quantity and temperature, settable doses and prebrewing

Color original Stainless Steel, colores opcionales : RBEZ5006 – WHITE // RBEZ5007 – BLACK // RBEZ5008 – RED



- Heavy duty 304 stainless Steel construction
- Removable stainless steel grids placed under the groups allow to use up to 5" tall cups.
- Fully Automatic
- Thermostatically controlled groups
- Cooper Broiler
- Built in volumetric motor pump connected directly to the water
- Water filter is included and mandatory to be installed
- Optional: Red, white, or black color available

SPECIFICATIONS

	OTTOCDE2IS4
Voltage	220V/50-60Hz/1 Hp
Power	2600 W
Boiler	8 Lts / 2.11 Gal
Product Dimensions	19.68 (W) x 19.48 (D) x 21.06 (H)
Net weight	126 Lbs
Gross weight	155 Lbs
Inlet Connection	G 3/8
Outlet Connection	G 3/4