



DS24
with stainless steel door and top



Intertek
 4004503
 Conforms to NSF/ANSI STD 2

Project: _____	AIA# _____
Item #: _____ Qty: _____	SIS# _____
Model #: _____	

Dry Storage Cabinets

Dry Storage	DS24, DS40, DS48, DS60, DS72, DS80, DS96
--------------------	--

Configurable Options

Door Style & Finish:

- Black vinyl-clad
- Stainless steel
- Jeweled stainless
- Laminated
- Unlaminated

Top Style:

- No finished top
- Stainless top
- Laminated top

Left and Right Side Finish:

- Black vinyl-clad
- Stainless steel
- Laminated

Door Hinge Location (*specify for each door*):

- Left or Right

Door Handle:

- Signature
- Pull-tab
- Tube

Standard Features

- Galvanized steel interior
- Eco-friendly, foamed-in-place insulated sides and door
- Stainless steel sub top (excluding DS24, which has an open top)
- Black vinyl-clad steel exterior front and sides
- Two adjustable, coated-wire shelves per door section

To view underbar installation instructions, please visit: https://www.glastender.com/PDF/F-750-165_Underbar_Installation_Instructions.pdf

To view cleaning and care instructions, please visit: https://www.glastender.com/PDF/F-423-011_ss_clean_care.pdf

Glastender, Inc. • 5400 N Michigan Rd • Saginaw, MI • 48604-9780 989.752.4275 • 800.748.0423 • Fax 989.752.4444 www.glastender.com	Approval/Notes:
Specifications subject to change without notice. For current specifications please visit our website.	

Dry Storage Cabinet

Specifications

		DS24	DS40	DS48	DS60	DS72	DS80	DS96
Dimensions	Length	24"	40"	48"	60"	72"	80"	96"
	Number of Sections	1	2	2	3	3	4	4
	Door Opening	20"	16"	20"	16"	20"	16"	20"
Weight Bearing Capacity		Countertops and other accessories should not exceed 500 pounds per door						

Materials

- 22 gauge galvanized steel parts include: interior walls and back on all models, and sub-top on DS48 and DS72
- 22 gauge black vinyl-clad parts include: sides and standard doors
- 18 gauge stainless steel parts include: top front channel and front leg channel on DS24
- 16 gauge stainless steel parts include: legs
- 16 gauge galvanized steel parts include: shelf and base on DS48 and DS72, rear leg channel, floor, and shelves on DS24
- 16 gauge zinc plated CR steel parts include: leg sockets
- 12 gauge stainless steel parts include: hinges, hinge brackets, and lock brackets



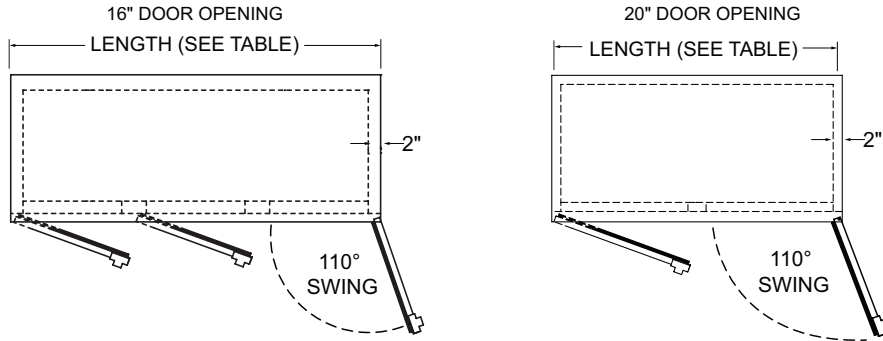
5400 N Michigan Rd • Saginaw, MI • 48604-9780
989.752.4275 • 800.748.0423 • Fax 989.752.4444
www.glastender.com

Printed in USA

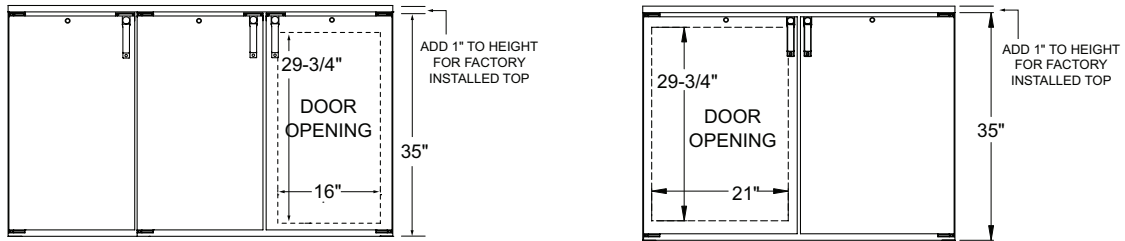
Dry Storage Cabinets

Drawings

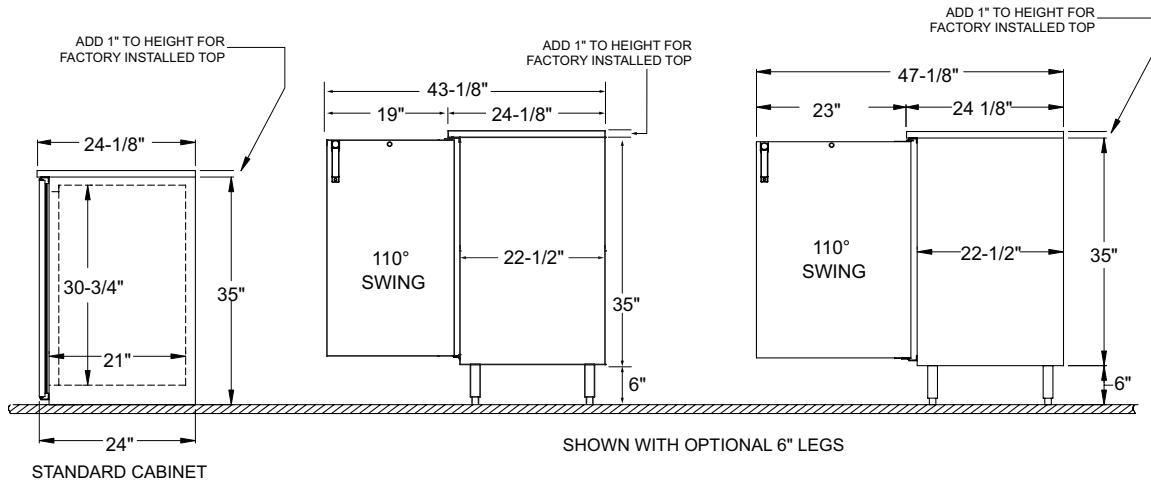
PLAN VIEW



FRONT VIEW



SIDE VIEWS



OPTIONAL LEGS AND CASTERS

