

IMPULSE SERIES

Hot Food Display Cases

FEATURES & BENEFITS

Styling: With rounded side glass for 360° degree visibility of your products, the Open Display line has the same stylish appearance as the full line of SandenVendo Hot Food Displays.

Heating: All models come with both bottom and top down heat. The top down heat works from a combined infrared and Xenon heat lamp system, providing superior product temperature stability.

Flexible Temperature: The Open Displays are not restricted on temperature adjustment. Each shelf can be adjusted separately and can be set from Low to High. This allows for a wide variety of products to be held in the same display.

Size: The 2-shelf models have the same height and side glass profile as our HFD, HFDC and HFDM. This allows for multiple models to be lined up side-by-side to serve both wrapped and unwrapped products.

Attractive Lighting: Xenon light bulbs create a well-lit product display for maximum customer appeal.

Shelf Configurations: Designed to be adjustable, the Open Display shelves can be positioned flat, or they can be tilted to a 7° degree angle with one simple adjustment. This feature eliminates the need to purchase multiple models for changing needs in marketing and product displays.

Divider Rods: All Open Displays come standard with divider rods to provide separation between products.

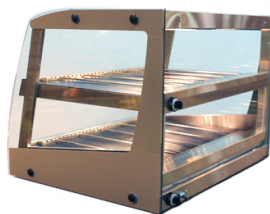
Open Hot Food Display



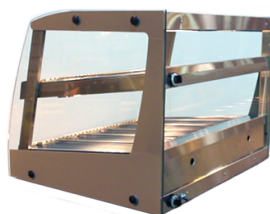
Designed to hold wrapped or boxed products

STANDARD

Adjustable Shelves

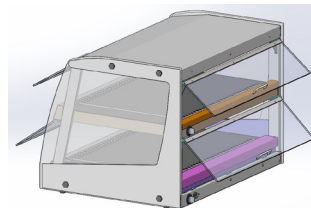


Flat Position



7° Tilted Position

OPTIONS



- Polycarbonate Door Kits *
- Designer Color Kits for side decals, bottom front base and front of shelves *

Standard Color: Stainless Steel
Optional Colors: Black, Red, Silver, White or Green

- Sneeze Guard 5" Curved polycarbonate *
- Wire Racks *

*Note: Options under development

IMPULSE SERIES

Hot Food Display Cases

Product SPECIFICATIONS

Single Shelf Open Hot Food Display								
Model *		HFOS24*	HFOS30*	HFOS36*	HFOS4*	HFOS48*	HFOS54*	HFOS60*
Overall Unit	Width (inches)	27.5	33.5	39.5	45.5	51.5	57.5	63.5
	Depth (inches)	31.5						
	Height (inches)	16.6						
Hot Plate	Width (inches)	24	30	36	42	48	54	60
	Depth (inches)	24						
Voltage		208-240						
Watts		1174	1467	1761	2054	2348	2641	2935
Amps		4.9	6.1	7.3	8.6	9.8	11.0	12.2
Plug NEMA		L14-20						
# of 40 Watt Xenon Lamp(s)		1	2	2	2	3	3	3
# of Divider Rods		4	5	6	7	8	9	10
Weight (lbs)		TBD	TBD	TBD	TBD	TBD	TBD	TBD

Double Shelf Open Hot Food Display								
Model		HFOD24	HFOD30**	HFOD36	HFOD42*	HFOD48*	HFOD54*	HFOD60*
Overall Unit	Width (inches)	27.5	33.5	39.5	45.5	51.5	57.5	63.5
	Depth (inches)	31.5						
	Height (inches)	27.8						
Hot Plate	Width (inches)	24	30	36	42	48	54	60
	Depth (inches)	24						
Voltage		208-240						
Watts		2348	2935	3521	4108	4695	5282	5869
Amps		9.8	12.2	14.7	17.1	19.6	22.0	24.5
Plug NEMA		L14-20			L14-30			
# of 40 Watt Xenon Lamp(s)		2	4	4	4	6	6	6
# of Divider Rods (Per Shelf)		4	5	6	7	8	9	10
Weight (lbs)		159 lbs	170 lbs	181 lbs	192 lbs	203 lbs	214 lbs	225 lbs

NOTE: The manufacturer reserves the right to make product improvements and change specifications without notice.

* Models not released for sale pending final development.