

Back Bar Refrigerators

SOLID DOORS
GLASS DOORS



As bar layouts are becoming increasingly smaller, refrigeration airflow is crucial to the success and operation of your unit. All Asber's bar Refrigerators are **fully front breathing** enabling them to be placed in the most compact environments for a seamless fit. **Complete side-mount refrigeration system** allows for full access to your products without the impedance of a roof mount evaporator giving you a worry-free operating environment.

Black vinyl is the preferred finish for Bar Equipment as its more durable and doesn't chip versus a painted finish. Asber's Bar Refrigerators come with a chip resistant black vinyl exterior finish front, sides and back. Interior walls with NSF approved white coated steel finish to enhance its merchantability, easy to clean with a sturdy stainless-steel floor. Always one step above to ensure the utmost in safety and sanitation for your establishment.

Insulation in any Refrigerator is one of the most important factors for thermal efficiency. Asber only uses the **world's leader Ecomate (GWP) (ODP) insulation, 2" thick** for the highest R value efficiency for your environments.

With innovative and eco-friendly technology, Asber utilizes

R-290 Hydrocarbon designed to meet DOE's Energy Conservation standards with very low contribution to global warming (ODP-0) (GWP-3).

LED interior lights offer shadow-free illumination, which lasts up to 10 times longer than fluorescent lights to enhance product display.

Double pane, hinged GLASS DOOR REFRIGERATORS with argon gas insulation for enhance energy efficiency. Prevents heat transfers, minimizes condensation and provides a frost-free viewing environment.

Additional features to include:

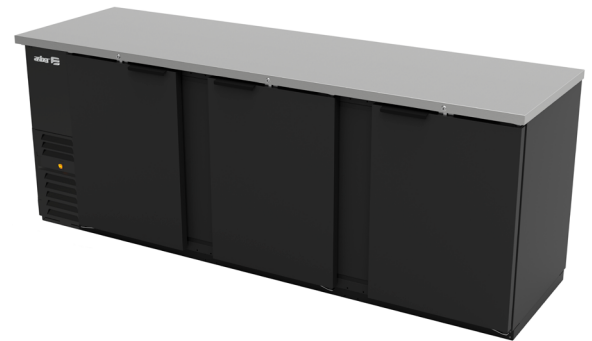
- Hermetic compressors with epoxy coated evaporator
- Automatic evaporator: Paper fins not utilized in the evaporation process.
- Electronic controller.
- LED interior lights.
- Temperature: Refrigerators 32 °F to 38 °F based on an external environment of 90 °F and 65% RH.
- Door locks with universal key.
- Meets the NSF-7 standard for food safety.



ABBC-58



ABBC-58G



ABBC-94

OPTIONS & ACCESORIES

- Additional 2nd year warranty.
- Low profile castor rails (increase overall height by 1/2").
- Additional epoxy coated shelves.
- Voltage: 220V. - 1 - 50Hz.
- 6" adjustable stainless-steel legs.



	MODEL	DOORS	SHELVES	CAPACITY (12 oz. can)	AMPS	HP	VOLTS	DIMENSIONS			SHIPPING WEIGHT (lbs)
								Width	Depth	Height ¹	
SOLID DOORS	ABBC-58	2	4	640	3.0	1/3	115/60	59 1/2"	28 5/8"	36 7/8"	285
	ABBC-68	2	4	800	3.0	1/3	115/60	69 1/2"	28 5/8"	36 7/8"	310
	ABBC-78	3	6	878	3.0	1/3	115/60	80"	28 5/8"	36 7/8"	375
	ABBC-94	3	6	1200	3.0	1/3	115/60	95 1/2"	28 5/8"	36 7/8"	390
GLASS DOORS	ABBC-58G	2	4	640	3.0	1/3	115/60	59 1/2"	28 5/8"	36 7/8"	305
	ABBC-68G	2	4	800	3.0	1/3	115/60	69 1/2"	28 5/8"	36 7/8"	330
	ABBC-78G	3	6	878	3.0	1/3	115/60	80"	28 5/8"	36 7/8"	429
	ABBC-94G	3	6	1200	3.0	1/3	115/60	95 1/2"	28 5/8"	36 7/8"	465

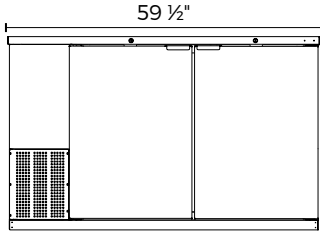
¹. Specifications are subject to change without prior notice.

Back Bar Refrigerators

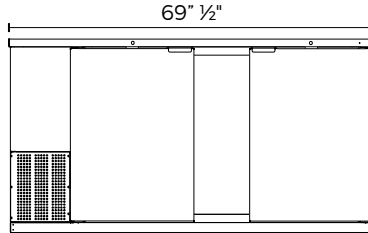
SOLID DOORS
GLASS DOORS



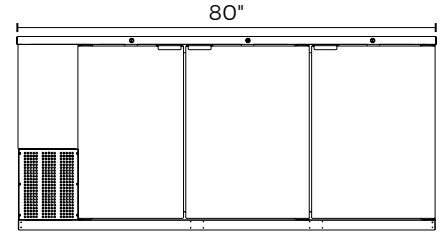
ABBC-58 FRONT



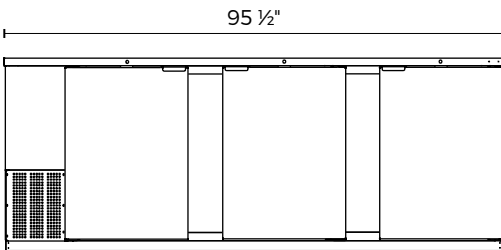
ABBC-68 FRONT



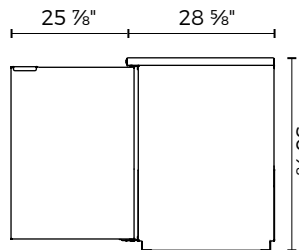
ABBC-78 FRONT



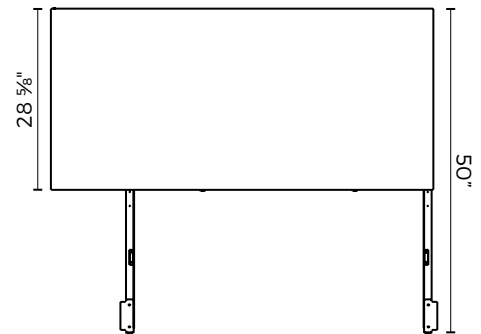
ABBC-94 FRONT



COMMON SIDE VIEW



COMMON TOP VIEW



ELECTRICAL DATA	58"		68"		78"		94"	
	Solid	Glass	Solid	Glass	Solid	Glass	Solid	Glass
Voltage	115/60							
Plug Type	Nema 5-15P							
Full Amp. Loads	3.0							
Compressor HP	1/3							
Cord Length (ft)	10							
Refrigerant	R-290							
DIMENSIONAL DATA								
# of Doors	2				3			
Capacity (12 oz. can)	640		800		878		1200	
Ext. Width Overall	59 1/2"		69 1/2"		80"		95 1/2"	
Ext. Depth Overall	28 5/8"							
Ext. Height Overall	36 7/8"							
Int. Width Overall	44 5/8"		54 5/8"		65"		80 1/2"	
Int. Depth Overall	23 1/4"							
Int. Height Overall	31 3/4"							
# of Shelves	4				6			
Shelf Size (L x D)	21 5/8" x 22 1/2"		26 5/8" x 22 1/2"		22 1/2" x 18 5/8" 22 1/2" x 21 5/4" 22 1/2" x 23 1/8"		22 1/4" x 25 5/8"	
Shipping Weight (lbs.)	285	305	310	330	375	429	390	465

1. Height does not include 2.5" diameter castors (23" models).
2. Specifications are subject to change without prior notice.

Standard Features

- 2" Ecomate CFC Free foam in place insulation.
- Electronic controller with digital display.
- LED interior lights.
- Self-contained Refrigeration with epoxy coated evaporator.
- Door locks with universal key.
- Meets the NSF-7 standard for food safety.

Options & Accessories Warranty

- Additional 2nd year warranty.
 - Low profile castor rails (Increase overall height by 1/2").
 - Additional epoxy coated shelves.
 - Voltage: 220V. – 1 – 50 hz.
 - 6" adjustable stainless-steel legs.
 - 1-year parts & labor.
 - 5-year compressor.
- *RESIDENTIAL APPLICATIONS: Asber assumes no liability for parts or labor coverage for component failure, factory defect or any other damages for units installed in non-commercial foodservice or residential applications.