



TARRISON

# PLUMBING FIXTURES

---

V.1.0

---

2021



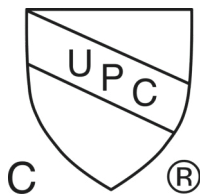
TARRISON.COM

# SINKS & PLUMBING SERIES

Tarrison Plumbing is expertly engineered for exceptional durability in even the most demanding commercial environments. cUPC as well as NSF/ANSI 61 certifications mean that faucets and pre-rinse units are lead free and suitable for use in multiple markets including grocery, retail, bars, pharmaceutical, restaurant, education, healthcare, and hospitality.



Certified to  
NSF/ANSI 61





## TABLE OF CONTENTS

---

### 4. Pre-Rinse Units

- *Double Pantry 8" Wall & Deck Mount Pre-Rinse Units*
- *Double Pantry Single Hole Deck & 4" Deck Mount Pre-Rinse Units*
- *Single Pantry Wall & Deck Mount Pre-Rinse Units*
- *Pre-Rinse Unit Parts*
- *Add-On Faucets*

### 9. Faucets

- *8" Commercial Duty Wall Mount Faucets - Knob Handles*
- *8" Heavy Duty Wall Mount Faucets - Lever Handles*
- *8" Commercial Duty Deck Mount Faucets - Knob Handles*
- *8" Heavy Duty Deck Mount Faucets - Lever Handles*
- *4" Commercial Duty Deck Mount Faucets - Knob Handles*
- *4" Heavy Duty Deck Mount Faucets - Lever Handles*
- *4" Commercial Duty Backsplash Wall Mount Faucets - Knob Handle*
- *4" Heavy Duty Backsplash Wall Mount Faucets - Lever Handle*
- *Automatic Electronic Backsplash Wall Mount Faucet*

### 14. Waste Units

- *Twist Handle Waste*
- *Stainless Steel Drain Baskets*
- *Overflow Tubes*
- *Corner Drain Screens*

### 16. Accessories

- *Pedals and Valves*
- *Faucet Wall Mount Inlet Kit*
- *Soap Dispenser*
- *Wrist Blade Handles*
- *Faucet-Mounted Eyewash Unit*
- *Single Pantry Faucet*



PR8WDH



PR8DDH

Tarrison Pre-Rinse Units include a 2-year limited warranty

- Quality engineering, design, and craftsmanship
- Heavy duty brass and forged brass body construction
- Chrome polished finish

Model	Name	Description	Weight (lbs)
PR8WDH	8" Wall Mount Pre-Rinse Unit	Pre-Rinse Faucet Assembly, Wall Mount, 8" On Center, Double Pantry, 44" hose assembly with stainless steel outer jacket & collars, (1) PRP14 spray head, integral spring check valves, 12" wall bracket, (2) 1/2" NPT female inlets, brass construction with polished chrome finish, NSF and cUPC Approved	15
PR8DDH	8" Deck Mount Pre-Rinse Unit	Pre-Rinse Faucet Assembly, Deck Mount, 8" On Center, Double Pantry, 44" hose assembly with stainless steel outer jacket & collars, (1) PRP14 spray head, integral spring check valves, 12" wall bracket, (2) 1/2" NPT female inlets, brass construction with polished chrome finish, NSF and cUPC Approved	15
Height: 40"			

### Double Pantry 8" Wall & Deck Mount Pre-Rinse Units

- A 3-ply, 400 PSI test hose
  - 210°F/99°C rated
  - Stainless steel outer jacket
  - Stainless steel collars for added durability
- Integral spring check valves to prevent cross-flow of hot and cold water
- Standard with 44" hose
- Standard with PRP14 Spray Head
- Ceramic cartridges
- 12" Wall Bracket supplied - cut to size for installation

Model	Name	Description	Weight (lbs)
PR1DDH	Single Hole Deck Mount Pre-Rinse Unit	Pre-Rinse Faucet Assembly, Deck Mount, single hole, Double Pantry, 44" hose assembly with stainless steel outer jacket & collars, (1) PRP14 spray head, integral spring check valves, 12" wall bracket, (2) 1/2" NPT female inlets, brass construction with polished chrome finish, NSF and cUPC Approved	15
PR4DDH	Single Hole Deck and 4" Deck Mount Pre-Rinse Unit	Pre-Rinse Faucet Assembly, Deck Mount, 4" On Center, Double Pantry, 44" hose assembly with stainless steel outer jacket & collars, (1) PRP14 spray head, integral spring check valves, 12" wall bracket, (2) 1/2" NPT female inlets, brass construction with polished chrome finish, NSF and cUPC Approved	15
Height: 40"			



PR1DDH



PR4DDH

### Double Pantry Single Hole Deck & 4" Deck Mount Pre-Rinse Units

- A 3-ply, 400 PSI test hose
  - 210°F/99°C rated
  - Stainless steel outer jacket
  - Stainless steel collars for added durability
- Integral spring check valves to prevent cross-flow of hot and cold water
- Standard with 44" hose
- Standard with PRP14 Spray Head
- Ceramic cartridges
- 12" Wall Bracket supplied - cut to size for installation



PR1WSH



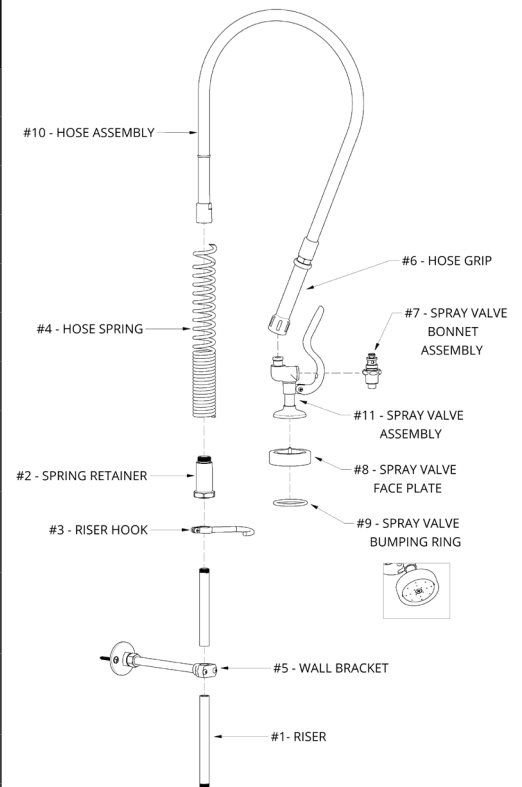
PR1DSH

Model	Name	Description	Weight (lbs)
PR1WSH	Single Wall Mount Pre-Rinse Unit	Pre-Rinse Faucet Assembly, Wall Mount, single hole, single pantry, 44" hose assembly with stainless steel outer jacket & collars, (1) PRP14 spray head, integral spring check valves, 12" wall bracket, (1) 1/2" NPT male inlet, brass construction with polished chrome finish, NSF and cUPC Approved	15
PR1DSH	Deck Mount Pre-Rinse Unit	Pre-Rinse Faucet Assembly, Deck Mount, single hole, single pantry, 44" hose assembly with stainless steel outer jacket & collars, (1) PRP14 spray head, integral spring check valves, 12" wall bracket, (1) universal 1/4" NPT or 1/2" NPS inlet, brass construction with polished chrome finish, NSF and cUPC Approved	15
Height: 40"			

### Single Pantry Wall & Deck Mount Pre-Rinse Units

- A 3-ply, 400 PSI test hose
  - 210°F/99°C rated
  - Stainless steel outer jacket
  - Stainless steel collars for added durability
- Integral spring check valves to prevent cross-flow of hot and cold water
- Standard with 44" hose
- Standard with PRP14 Spray Head
- Ceramic cartridges
- 12" Wall Bracket supplied - cut to size for installation

Model	Description (Parts)	Part Number on Right
PRP1	Riser, 24", for pre-rinse faucet assembly	#1
PRP2	Spring Retainer, for pre-rinse faucet assembly	#2
PRP3	Riser Hook, for pre-rinse faucet assembly	#3
PRP4	Hose Spring, for pre-rinse faucet assembly	#4
PRP5	Wall Bracket, 12", for pre-rinse faucet assembly	#5
PRP6	Hose Grip, for pre-rinse faucet assembly	#6
PRP7	Spray Valve Bonnet Assembly	#7
PRP8	Spray Valve Face Plate, plastic, for pre-rinse faucet assembly	#8
PRP10	Spray Valve Bumper Ring, for pre-rinse faucet assembly	#9
PRP12	Hose Assembly, 44", includes grip, for pre-rinse faucet assembly	#10
PRP13	Hose Assembly, 60", includes grip, for pre-rinse faucet assembly	#10
PRP14	Pre-Rinse Spray Valve Assembly	#11
PRP15	Handle Ring, secures pre-rinse handle to hose	--





PA8



PA14

Model	Description
PA6	Add-On Faucet, single pantry, 6" swing spout, 3/8" NPT male inlet, 3/8" NPT female outlet, brass construction with polished chrome finish
PA8	Add-On Faucet, single pantry, 8" swing spout, 3/8" NPT male inlet, 3/8" NPT female outlet, brass construction with polished chrome finish
PA10	Add-On Faucet, single pantry, 10" swing spout, 3/8" NPT male inlet, 3/8" NPT female outlet, brass construction with polished chrome finish
PA12	Add-On Faucet, single pantry, 12" swing spout, 3/8" NPT male inlet, 3/8" NPT female outlet, brass construction with polished chrome finish
PA14	Add-On Faucet, single pantry, 14" swing spout, 3/8" NPT male inlet, 3/8" NPT female outlet, brass construction with polished chrome finish
PA16	Add-On Faucet, single pantry, 16" swing spout, 3/8" NPT male inlet, 3/8" NPT female outlet, brass construction with polished chrome finish

### Add-On Faucets

- Heavy-duty design and engineering
- Brass construction and polished chrome body
- Double O-Ring swivel spout
- 3/8" NPT male inlet and female outlet
- Add-on faucets add 5" to overall pre-rinse height

## 8" Wall Mount Faucets

Commercial Duty (CD) Knob Model Number	Heavy Duty (HD) Lever Model Number	Spout Size & Type	CD Weight (lbs)	HD Weight (lbs)
PF8WK3GC	PF8WL3GH	3 1/2" Gooseneck	5	7
PF8WK6GC	PF8WL6GH	6" Gooseneck	5	7
PF8WK8GC	PF8WL8GH	8" Gooseneck	5	7
PF8WK6C	PF8WL6H	6" Swing Spout	5	7
PF8WK8C	PF8WL8H	8" Swing Spout	5	7
PF8WK10C	PF8WL10H	10" Swing Spout	5	7
PF8WK12C	PF8WL12H	12" Swing Spout	5	7
PF8WK14C	PF8WL14H	14" Swing Spout	5	7
PF8WK16C	PF8WL16H	16" Swing Spout	5	7

### 8" Commercial Duty Wall Mount Faucets - Knob Handles

- Brass construction and polished chrome body
- Quarter turn ceramic cartridges
- Heavy-duty double O-Ring swivel spout
- Colour coded red and blue handles
- 1/2" NPT female inlets
- cUPC and NSF approved

### 8" Heavy Duty Wall Mount Faucets - Lever Handles

- Integral spring check valves to prevent cross-flow of hot and cold water
- Brass construction and polished chrome body
- Quarter turn ceramic cartridges
- Heavy-duty double O-Ring swivel spout
- Colour coded red and blue handles
- 1/2" NPT female inlets
- cUPC and NSF approved



PF8WK6GC



PF8WK14C



PF8WL6GH



PF8WL8H

## 8" Deck Mount Faucets



PF8DK6GC



PF8DK14C



PF8DL6GH



PF8DL14H

Commercial Duty (CD) Knob Model Number	Heavy Duty (HD) Lever Model Number	Spout Size & Type	CD Weight (lbs)	HD Weight (lbs)
PF8DK3GC	PF8DL3GH	3 1/2" Gooseneck	5	7
PF8DK6GC	PF8DL6GH	6" Gooseneck	5	7
PF8DK8GC	PF8DL8GH	8" Gooseneck	5	7
PF8DK6C	PF8DL6H	6" Spout	5	7
PF8DK8C	PF8DL8H	8" Spout	5	7
PF8DK10C	PF8DL10H	10" Spout	5	7
PF8DK12C	PF8DL12H	12" Spout	5	7
PF8DK14C	PF8DL14H	14" Spout	5	7
PF8DK16C	PF8DL16H	16" Spout	5	7

### 8" Commercial Duty Deck Mount Faucets - Knob Handles

- Brass construction and polished chrome body
- Quarter turn ceramic cartridges
- Heavy-duty double O-Ring swivel spout
- Colour coded red and blue handles
- 1/2" NPT female inlets

### 8" Heavy Duty Deck Mount Faucets - Lever Handles

- Integral spring check valves to prevent cross-flow of hot and cold water
- Brass construction and polished chrome body
- Quarter turn ceramic cartridges
- Heavy-duty double O-Ring swivel spout
- Colour coded red and blue handles
- 1/2" NPT female inlets
- cUPC and NSF approved

## 4" Deck Mount Faucets

Commercial Duty (CD) Knob Model Number	Heavy Duty (HD) Lever Model Number	Spout Size & Type	CD Weight (lbs)	HD Weight (lbs)
PF4DK3GC	PF4DL3GH	3 1/2" Gooseneck	5	7
PF4DK6GC	PF4DL6GH	6" Gooseneck	5	7
PF4DK8GC	PF4DL8GH	8" Gooseneck	5	7
PF4DK6C	PF4DL6H	6" Spout	5	7
PF4DK8C	PF4DL8H	8" Spout	5	7
PF4DK10C	PF4DL10H	10" Spout	5	7
PF4DK12C	PF4DL12H	12" Spout	5	7
PF4DK14C	PF4DL14H	14" Spout	5	7
PF4DK16C	PF4DL16H	16" Spout	5	7

### 4" Commercial Duty Deck Mount Faucets - Knob Handles

- Brass construction and polished chrome body
- Quarter turn ceramic cartridges
- Heavy-duty double O-Ring swivel spout
- Colour coded red and blue handles
- 1/2" NPT female inlets
- cUPC and NSF approved

### 4" Heavy Duty Deck Mount Faucets - Lever Handles

- Integral spring check valves to prevent cross-flow of hot and cold water
- Brass construction and polished chrome body
- Quarter turn ceramic cartridges
- Heavy-duty double O-Ring swivel spout
- Colour coded red and blue handles
- 1/2" NPT female inlets
- cUPC and NSF approved



PF4DK3GC



PF4DK14C



PF4DL6GH



PF4DL14H

## 4" Backsplash Wall Mount Faucets



PF4WK6GC



PF4WK8C



PF4WL6GH



PF4WL14H

Commercial Duty (CD) Knob Model Number	Heavy Duty (HD) Lever Model Number	Spout Size & Type	CD Weight (lbs)	HD Weight (lbs)
PF4WK3GC	PF4WL3GH	3 1/2" Gooseneck	5	7
PF4WK6GC	PF4WL6GH	6" Gooseneck	5	7
PF4WK8GC	PF4WL8GH	8" Gooseneck	5	7
PF4WK6C	PF4WL6H	6" Swing Spout	5	7
PF4WK8C	PF4WL8H	8" Swing Spout	5	7
PF4WK10C	PF4WL10H	10" Swing Spout	5	7
PF4WK12C	PF4WL12H	12" Swing Spout	5	7
PF4WK14C	PF4WL14H	14" Swing Spout	5	7
PF4WK16C	PF4WL16H	16" Swing Spout	5	7

### 4" Commercial Duty Backsplash Wall Mount Faucets - Knob Handle

- High commercial quality designed for hand sinks
- Brass construction and polished chrome body
- Quarter turn ceramic cartridges
- Heavy-duty double O-Ring swivel spout
- Colour coded red and blue handles
- 1/2" NPT male inlets
- cUPC and NSF approved

### 4" Heavy Duty Backsplash Wall Mount Faucets - Lever Handle

- High commercial quality designed for hand sinks
- Brass construction and polished chrome body
- Quarter turn ceramic cartridges
- Heavy-duty double O-Ring swivel spout
- Colour coded red and blue handles
- 1/2" NPT male inlets
- cUPC and NSF approved

Wall Mount Model	Spout Size (inches)	Weight (lbs)
PE1W6H	6" Gooseneck	10



PE1W6H

## Automatic Electronic Backsplash Wall Mount Faucet

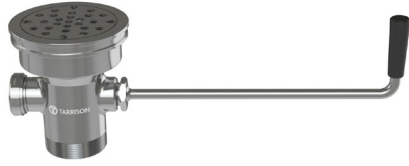
### PE1W6H

- Heavy-duty brass construction and polished chrome body
- Sealed waterproof construction
- Reliable solid state electronic circuitry
- AC/DC 120 volt

### Valve features:

- Built-in adjustable flow and temperature controls
- An infrared sensor detects the presence of an object in front of the unit and turns water On and Off
- Universal 1/4" NPT or 1/2" NPS male inlets





PDDT2

Model	Description	Sink Opening (inches)	Drain Outlet (inches)	Weight (lbs)
PDDT2	Lever Waste, twist handle with overflow outlet, 3-1/2" diameter drain opening, 1-1/2" outlet, stainless steel strainer, handle, & 4-3/8" diameter flange, nickel-plated bronze body	3.5	1.5	2

### Twist Handle Waste

- Heavy-duty nickel plated bronze body construction
- Stainless steel strainer, handle and 4 3/8" diameter flange
- Stainless steel 4 3/8" diameter flange

### Stainless Steel Drain Baskets



PDDB1



PDDB2

Model	Description	Sink Opening (inches)	NPS Outlet (inches)	Weight (lbs)
PDDB1	Duo-Basket Strainer, 3-1/2" sink opening, 1-1/2" outlet, chrome-plated post, rolled edge basket, rubber seal	3.5	1.5	2
PDDB2	Mini-Basket Strainer, 1-7/8" sink opening, 1-1/2" outlet, chrome-plated post, rolled edge basket, rubber seal	1 7/8	1.5	2

### Overflow Tubes



309201

Model	Description	Weight (lbs)
309200	7 1/2" Long Brass Stainless Steel Overflow Tube for 1 1/2" Sink Opening	2
309201	10" Long Brass Stainless Steel Overflow Tube for 1 1/2" Sink Opening	2
309212	12" Long Brass Stainless Steel Overflow Tube for 1 1/2" Sink Opening	2

## Corner Drain Screens

Model	Description	Weight (lbs)
PDG-1C	Perforated Corner Drain Screen, for use with Tarrison CDS1 series sinks	1
PDG-2/3C	Perforated Corner Drain Screen, for use with Tarrison CDS2 and CDS3 series sinks	1



PDG-1C





PLFD1



PLKD2



PLFC



PLKH



HSFBPTV

Model	Description	Inlet Size (inches)	Outlet Size (inches)
PLFD1	Double Foot Pedal, heavy-duty brass construction and rough chrome plated body, self-closing valves, reinforced Double O-Ring valves, and extra long and wide stainless steel pedals for easy operation	(2) 1/2 Male NPS	(1) 3/8 Female NPT
PLKD2	Double Knee Pedal, heavy-duty brass construction and rough chrome plated body, self closing valves, reinforced Double O-Ring valves, and extra long and wide stainless steel pedals for easy operation	(2) 1/2 Male NPS	(1) 3/8 Female NPT
PLFC PLFH	Single Foot Pedal with rough chrome plated body, self-closing valve, blue (cold) or red (hot) indexed, polished chrome finish brass pedal	1/2 Female NPT	1/2 Female NPT
PLKC PLKH	Single Knee Pedal with rough chrome plated body, self-closing valve, blue (cold) or red (hot) indexed, polished chrome finish brass pedal	1/2 Female NPT	1/2 Female NPT
HSFBPTV	Body Press Valve, for use with HSF14BP	-	-

## Faucet Wall Mount Inlet Kit



PMPW

Model	Description
PMPW	Simplifies wall faucet installation in standard backsplash space, kit includes two each of 1/2" NPS nipples, 1/2" NPT street wells, washers and locknuts

## Soap Dispenser



PMSD

Model	Description	Size
PMSD	Commercial Liquid Soap Dispenser with plastic globe, chrome finish spout and gravity type flow	Overall size: 6 1/2L x 3 7/8 W x 5 3/16 D Liquid soap capacity - 16 oz.

## Wrist Blade Handles

Model	Description
PM5	Faucet Wrist Blade Handles



PM5

Model	Description	Weight (lbs)
BG1101	Faucet Mounted Eyewash Unit with forged brass diverter valve, body has 55/64"-27 female inlet, furnished with three adaptors (15/16"-27, 13/16"-27 and 3/8" NPS) for installing on most commonly used faucets, including laboratory-type faucets, furnished with removable aerator on bottom	7



BG1101

### Faucet-Mounted Eyewash Unit

- Converts most faucets into an emergency eyewash station without interfering with normal faucet operation
- Ideal for use with gooseneck faucets and can be installed at any sink
- Outlet heads are mounted 5" apart and deliver a soft, aerated flow of water
- Angle of heads is adjustable to permit full coverage and avoid splashing
- Meets ANSI Z358.1-2014

## Wall and Deck Mount Spouts

Model	Description	Weight (lbs)
PMD8G	Deck Mount Spout, 8.5" gooseneck, triple chrome plated low lead brass alloy valve body, ceramic valve; polished chrome finished tubular brass spouts, 1/2" NPS male inlet with 1/4" NPT union tail piece and mounting hardware.	7
PMW8G	Wall Mount Spout, 8.5" gooseneck, triple chrome plated low lead brass alloy valve body, ceramic valve; polished chrome finished tubular brass spouts, 1/2" NPS female inlet, nipple, street well and mounting hardware.	7



PMD8G



PMW8G

# ABOUT US

## Tarrison Products Ltd.

Tarrison Products Ltd. brings over 30 years of commitment and passion to delivering quality service and product solutions. Tarrison Products Ltd. continues its dedication to providing top quality, customizable stainless steel products to a range of industries. Innovative solutions are applied to the entire process from design to delivery.

Streamlined production, Canadian and American distribution centers, and in-house customization capabilities provide speed and precision. Tarrison is your one-stop supplier for almost all back-of-house, front-of-house, and outdoor needs. Established and experienced in delivering durable products to meet all budgets and lead times.

Over the past 30 years Tarrison has expanded to include Tarrison Contract Furniture and Tarrison Outdoor.

As part of our continued commitment to improving the design experience and efficiency of the ordering process, we have developed Tarrison 360. This online platform optimizes and organizes the stainless steel product design process. Tarrison 360 allows users to set the dimensions of our stainless steel products, customize them, generate specifications and have technical design files available in minutes.

Learn more about Tarrison 360 at [t360.tarrison.com](http://t360.tarrison.com)



## **STAINLESS STEEL**

WORKTABLES  
DISHTABLES

## **SINKS AND PLUMBING**

SINKS  
PLUMBING FIXTURES  
UNDERBAR

## **SHELVING AND STORAGE**

SHELVING  
RACKS, CARTS, & SPECIALTY SHELVING  
HIGH DENSITY SHELVING

## **SERVING SOLUTIONS**

SERVERY SYSTEMS

## **CONTRACT FURNITURE**

CONTRACT FURNITURE

## **OUTDOOR AND GRILLS**

OUTDOOR

## **AND MORE**

INDUCTION, REFRIGERATION,  
TARRISON 360, LOOKBOOKS

2021

---

# PLUMBING FIXTURES CATALOGUE



[WWW.TARRISON.COM](http://WWW.TARRISON.COM)

905.825.9665  
[info@tarrison.com](mailto:info@tarrison.com)

**CANADIAN HEAD OFFICE**

2780 COVENTRY ROAD,  
OAKVILLE, ON L6H 6R1

**US DISTRIBUTION CENTRE**

150 GRATIOT BOULEVARD,  
MARYSVILLE, MI 48040