



# W8 TOP

Vacuum pack machines



**W8 TOP 40 DX**  
with inert gas and AOR optionals



**W8 TOP 50 DX**



- Practical and intuitive touch screen display (see pag.86)
- Electronic control system with pressure sensor for fast and precise processing
- Adjustable automatic vacuum percentage: 50-100%
- Dedicated programs for liquids and marinating
- 10 different settings savable to preference
- 6 selectable languages
- Set up sealing, vacuum, and gas time on a 1-10 sec scale
- Display of vacuum percentage and time to countdown
- Scheduled management of maintenance operations to ensure longer-lasting life oil and filter change warning light
- Thermal pump guard
- Oil preheat and cleaning cycle
- Total rev counter
- Pump meter
- Built-in Wi-Fi card which allows careful management of after-sales service at a distance
- 3-year pump warranty (for machines connected via Wi-Fi)
- Fully manageable via APP that is easy and intuitive and can be downloaded free-of-charge from official stores

### Optionals:

Inert gas system (MAP) and soft air

Automatic thermal printer by date, time and packing specifications

A.O.R. Automatic Oil Replacement

SanO3 - Patented - is an integrated and automated sanitizing system that works with an ozone generating cell to deeply sanitize the chamber and all the air pipes reaching the best result where other sanitizing procedures cannot get.

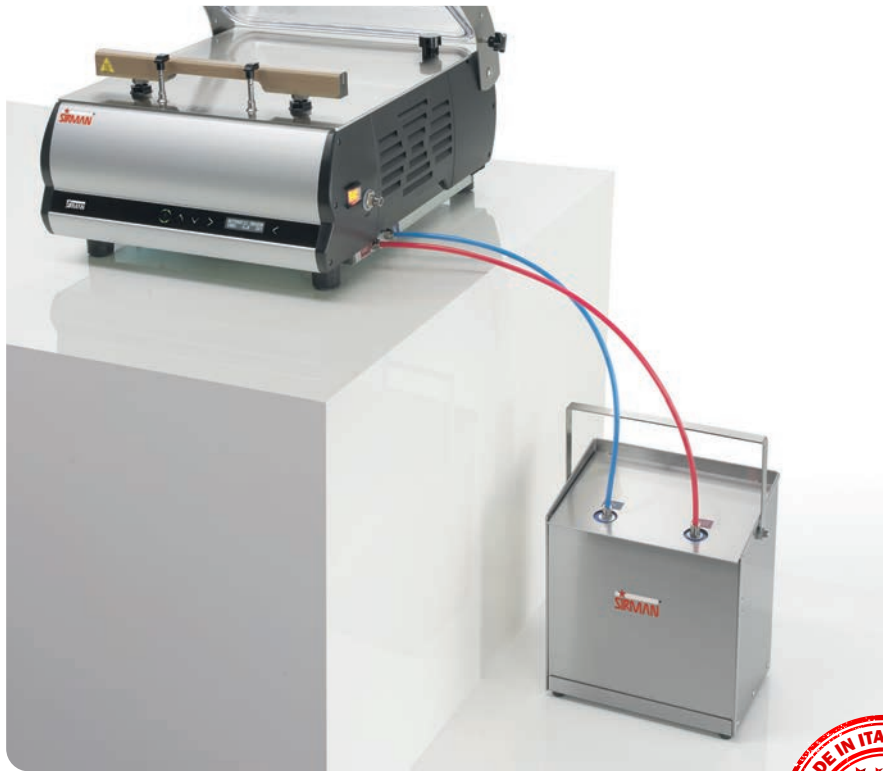
Available only on W8 TOP 40, 50 and 70

### Specifications

**Plug & Cord:** NEMA 5-20 P



Certified to UL Standard 963 and NSF Standard 169  
Certified to CSA Standard C22.2



**SANO<sub>3</sub>**  
AUTOMATIC OZONE SANITIZATION



Optional - Patented - is an integrated and automated sanitizing system that works with an ozone generating cell to deeply sanitize the chamber and all the air pipes reaching the best result where other sanitizing procedures cannot get.

Available only on W8 TOP 40, 50



**AOR**  
AUTOMATIC OIL REPLACEMENT

Automatic Oil Replacement, an exclusive patent by Sirman, always in pole position for vacuum and sous vide technology. The machine automatically manages the oil changing, preserving the pump from damage and thus extending the warranty of the pump to 3 years (for machines connected via Wi-Fi).



Thermal label printer - option



Standard support for vacuum bags  
with liquids



Easy access for oil change and service



Optional adhesive paper  
for built-in printer



W8 50 DX DB  
1 left and 1 right seal bars design



W8 70 DX TB  
3 seal bars design



W8 Top 50 DX G  
with inert gas flush ready



**External vacuum: hose + GN container + lid**  
Reinforced Gastronorm Containers  
and s/steel Lids



**External vacuum: hose + GN container + lid**  
Reinforced Gastronorm Containers and  
Lids



W8 Top 40-50 DX G  
Option inert gas and A.O.R.

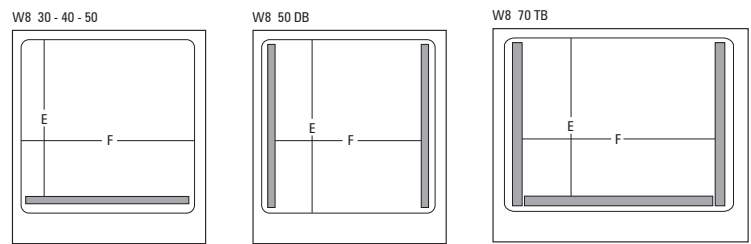
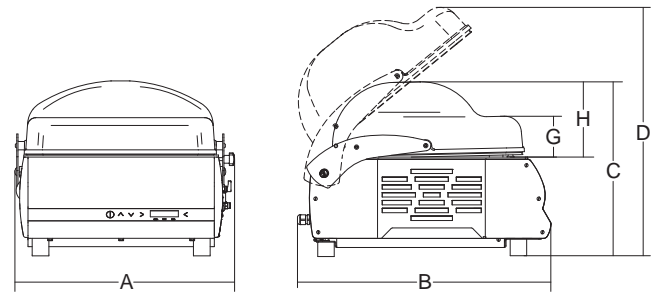


W8 Top  
Touch control

bag size	capacity	W8 Top 30 DX bags/cycle	W8 Top 40 DX bags/cycle	W8 Top 50 DX DB bags/cycle	W8 Top 50 DX bags/cycle
5" x 7"	.5 pt - .5 lb	2	3	6	4
6" x 8"	.5 pt - .5 lb	2	2	4	3
8" x 12"	1 qt - 2 lb	1	2	4	2
10" x 12"	1.5 qt - 3 lb	1	1	2	2
10" x 15"	3 qt - 6 lb	1	1	2	2
12" x 14"	1 gal - 8 lb	1	1	2	1
12" x 16"	1 gal - 8 lb	1	1	2	1
12" x 18"	1.25 gal - 10 lb	1	1	2	1
14" x 20"	1.75 gal - 14 lb	--	1	2	1
16" x 22"	2.5 gal - 20 lb	--	1	2	1



W8 TOP 70 DX TB



	Electrical	Seal bar inch.	Pump m3/h	Chamber dimensions inch.	Chamber dimensions								Net weight lbs.	Shipping inch.	Gross weight lbs.
					A	B	C	D	E	F	G	H			
<b>W8 Top 30 DX</b>	120V/11.3A/1250W	12 <sup>1</sup> / <sub>4</sub> "	9	13 <sup>3</sup> / <sub>8</sub> "x14 <sup>3</sup> / <sub>16</sub> "x6 <sup>3</sup> / <sub>4</sub> "	16"	20 <sup>3</sup> / <sub>4</sub> "	16"	23 <sup>1</sup> / <sub>8</sub> "	13 <sup>1</sup> / <sub>8</sub> "	13 <sup>1</sup> / <sub>8</sub> "	3 <sup>47</sup> / <sub>64</sub> "	6 <sup>11</sup> / <sub>16</sub> "	83	29"x23"x31"	105
<b>W8 Top 40 DX</b>	120V/11.3A/960W	16 <sup>1</sup> / <sub>8</sub> "	14	17"x16 <sup>1</sup> / <sub>8</sub> "x7 <sup>1</sup> / <sub>8</sub> "	19 <sup>1</sup> / <sub>2</sub> "	23"	16 <sup>5</sup> / <sub>8</sub> "	24 <sup>3</sup> / <sub>4</sub> "	15 <sup>3</sup> / <sub>8</sub> "	17"	3 <sup>47</sup> / <sub>64</sub> "	7 <sup>3</sup> / <sub>32</sub> "	123	30"x26"x31"	145
<b>W8 Top 40 DX</b>	120V/11.3A/960W	16 <sup>1</sup> / <sub>8</sub> "	24	17"x16 <sup>1</sup> / <sub>8</sub> "x7 <sup>1</sup> / <sub>8</sub> "	19 <sup>1</sup> / <sub>2</sub> "	23"	16 <sup>5</sup> / <sub>8</sub> "	24 <sup>3</sup> / <sub>4</sub> "	15 <sup>3</sup> / <sub>8</sub> "	17"	3 <sup>47</sup> / <sub>64</sub> "	7 <sup>3</sup> / <sub>32</sub> "	123	30"x26"x31"	145
<b>W8 Top 50 DX</b>	120V/11.3A/960W	20 <sup>1</sup> / <sub>16</sub> "	24	21 <sup>1</sup> / <sub>2</sub> "x18 <sup>1</sup> / <sub>8</sub> "x8 <sup>1</sup> / <sub>4</sub> "	24"	25 <sup>1</sup> / <sub>2</sub> "	16 <sup>5</sup> / <sub>8</sub> "	23 <sup>7</sup> / <sub>8</sub> "	16 <sup>7</sup> / <sub>8</sub> "	21 <sup>1</sup> / <sub>4</sub> "	3 <sup>35</sup> / <sub>64</sub> "	8 <sup>17</sup> / <sub>64</sub> "	155	34"x34"x30"	190
<b>W8 Top 50 DX DB (1 LEFT 1 RIGHT SEAL BARS)</b>	120V/13.8A/1000W	2x16 <sup>1</sup> / <sub>8</sub> "	24	21 <sup>1</sup> / <sub>2</sub> "x18 <sup>1</sup> / <sub>8</sub> "x8 <sup>1</sup> / <sub>4</sub> "	24"	25 <sup>1</sup> / <sub>2</sub> "	16 <sup>5</sup> / <sub>8</sub> "	23 <sup>7</sup> / <sub>8</sub> "	16 <sup>7</sup> / <sub>8</sub> "	21 <sup>1</sup> / <sub>4</sub> "	3 <sup>35</sup> / <sub>64</sub> "	8 <sup>17</sup> / <sub>64</sub> "	165	34"x34"x30"	195
<b>W8 Top 70 DX TB (3 SEAL BARS)</b>	220V 3-phase 7.3A/1750W	1x25 <sup>1</sup> / <sub>4</sub> " 2x16 <sup>1</sup> / <sub>8</sub> "	48	30 <sup>3</sup> / <sub>4</sub> "x19 <sup>1</sup> / <sub>3</sub> "x8 <sup>1</sup> / <sub>4</sub> "	34 <sup>1</sup> / <sub>2</sub> "	26 <sup>1</sup> / <sub>2</sub> "	44 <sup>5</sup> / <sub>8</sub> "	53 <sup>7</sup> / <sub>8</sub> "	16 <sup>3</sup> / <sub>4</sub> "	26"	3 <sup>47</sup> / <sub>64</sub> "	7 <sup>7</sup> / <sub>8</sub> "	370	32"x48"x53"	282

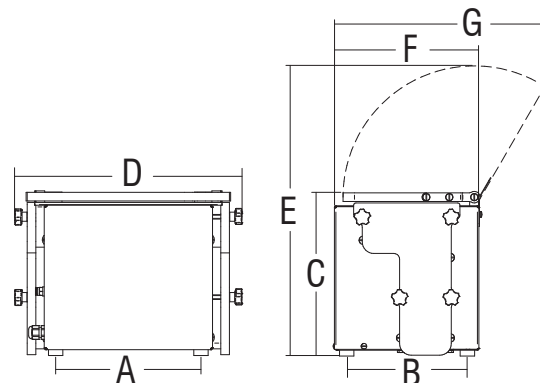
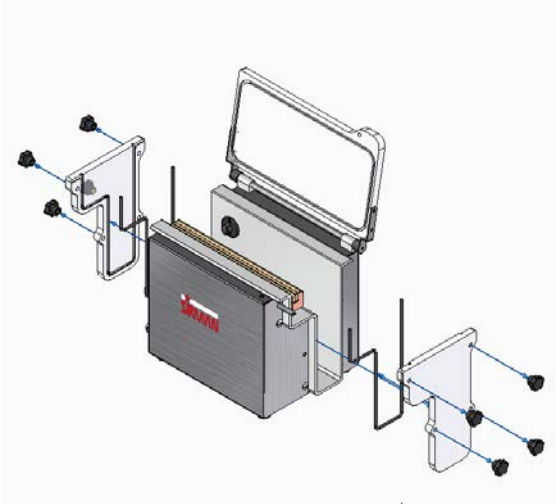


# SAT SYSTEM

*vacuum pack machines with satellite*



- Sat System is an optional function of the TOP control (see pag.86) board that allows you to quickly connect a second satellite machine to the main machine to be used instead of or simultaneously with the main machine.
- With a small investment, you can thus double productivity as if you had two machines available or you can have a satellite machine specifically dedicated to liquid or powdery products (Vertigo SAT 30).
- Ideal for:
  - all health and hygiene situations where the use of different machines for different products is required.
  - those who want to be faster in preparing their vacuum workload
  - those who want to exploit the maximum capacity of the bags with liquid products (using Vertigo SAT 30)
- It is recommended to use satellite units of the same size as the main machine or smaller

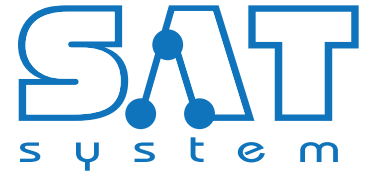


	Seal bar	A	B	C	D	E	F	G	Net weight	Shipping	Gross weight
	inch.	inch.	inch.	inch.	inch.	inch.	inch.	inch.	lbs.	inch.	lbs.
<b>VERTIGO SAT 30</b>	12 <sup>1</sup> / <sub>4</sub> "	9 <sup>5</sup> / <sub>16</sub> "	8 <sup>1</sup> / <sub>16</sub> "	11 <sup>3</sup> / <sub>16</sub> "	15 <sup>19</sup> / <sub>32</sub> "	19 <sup>7</sup> / <sub>8</sub> "	9 <sup>59</sup> / <sub>64</sub> "	14 <sup>13</sup> / <sub>32</sub> "	29		

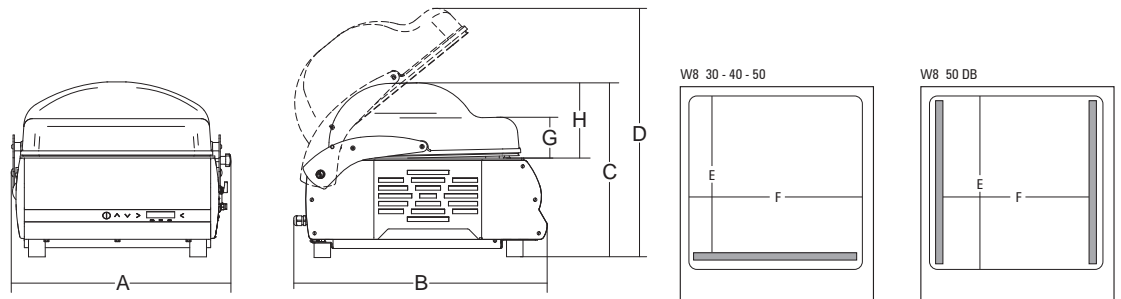


Certified to UL Standard 963 and NSF Standard 169  
 Certified to CSA Standard C22.2

Vacuum-pack machines  
 Sous-vide cookers



Sat System ready



	Seal bar	A	B	C	D	E	F	G	H	Net weight	Shipping	Gross weight
	inch.	inch.	inch.	inch.	inch.	inch.	inch.	inch.	inch.	lbs.	inch.	lbs.
<b>W8 SAT 30</b>	12 <sup>1</sup> / <sub>4</sub> "	16"	20 <sup>3</sup> / <sub>4</sub> "	16"	23 <sup>1</sup> / <sub>8</sub> "	13 <sup>1</sup> / <sub>8</sub> "	13 <sup>1</sup> / <sub>8</sub> "	3 <sup>47</sup> / <sub>64</sub> "	6 <sup>11</sup> / <sub>16</sub> "	53	29"x23"x31"	75
<b>W8 SAT 40</b>	16 <sup>1</sup> / <sub>8</sub> "	19 <sup>1</sup> / <sub>2</sub> "	23"	16 <sup>5</sup> / <sub>8</sub> "	24 <sup>3</sup> / <sub>4</sub> "	15 <sup>3</sup> / <sub>8</sub> "	17"	3 <sup>47</sup> / <sub>64</sub> "	7 <sup>3</sup> / <sub>32</sub> "	68	30"x26"x31"	90
<b>W8 SAT 50</b>	20 <sup>1</sup> / <sub>16</sub> "	24"	25 <sup>1</sup> / <sub>2</sub> "	16 <sup>5</sup> / <sub>8</sub> "	23 <sup>7</sup> / <sub>8</sub> "	16 <sup>7</sup> / <sub>8</sub> "	21 <sup>1</sup> / <sub>4</sub> "	3 <sup>35</sup> / <sub>64</sub> "	8 <sup>17</sup> / <sub>64</sub> "	99	34"x34"x30"	121
<b>W8 SAT 50 DB</b>	2x16 <sup>1</sup> / <sub>8</sub> "	24"	25 <sup>1</sup> / <sub>2</sub> "	16 <sup>5</sup> / <sub>8</sub> "	23 <sup>7</sup> / <sub>8</sub> "	16 <sup>7</sup> / <sub>8</sub> "	21 <sup>1</sup> / <sub>4</sub> "	3 <sup>35</sup> / <sub>64</sub> "	8 <sup>17</sup> / <sub>64</sub> "	99	34"x34"x30"	121



SIRMAN USA, Inc. 9490 Franklin Avenue Franklin Park, IL 60131 U.S.A.

Phone: +1 847-288-9500  
 Toll free: 866-643-6872

sirmanusa@sirman.com  
 www.sirman.com



## EASY TOUCH Control

- Practical and intuitive touch keyboard with integrated WiFi
- Easy setting of the vacuum and sealing time
- Display shows vacuum percentage and time
- 10 programs that can be stored as desired
- Special programs:
  - Marinade
  - Pump preheating and oil cleaning cycle
  - Timed external vacuum (not for Vertigo 30)
- Last setting memorization
- Total use cycle and time counter
- Oil change message



## TOP Control

Smart, backlit, comprehensive yet intuitive touch control with WiFi connection

- Electronic control system with pressure sensor for automatic vacuum
- Vacuum setting at Mbar, Percentage or Time according to the user
- Temperature control sensor and pump protection
- Adjustable automatic vacuum percentage 50-100% or with residual vacuum in Mbar
- Dedicated program for liquids
- Dedicated programs for marinating
- 10 Multistep programs that can be stored as desired
- 6 Languages available
- Setting sealing time, vacuum and gas with 1/10 sec scale
- Displays vacuum percentage and remaining time
- Predictive maintenance operations to ensure a longer duration over time
- Oil and filter warning signal
- Oil preheating and cleaning cycle
- Total cycle counter
- Pump usage hour counter
- Electronic Softair with 3 adjustment levels

This control can integrate the following options\*:

- Inert gas system
- Thermal printer
- A.O.R.
- SanO3
- SAT SYSTEM

\* contact our office to find out which options may be available the same time on the same device