



SPEC SHEET

KoolMore Commercial Granite Top Refrigerated Pizza Prep Counter Width 79 Inches

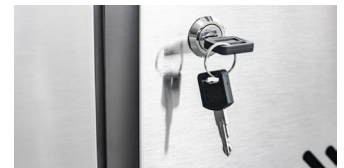
Model: KM-RPPS-3D79-GRT

FEATURES

- Durable Granite Counter: Provides a robust and aesthetic work surface.
- Refrigerated Cabinet Storage: Keeps ingredients fresh and accessible.
- Easy Access Refrigerated Condiment Rail: Enhances preparation efficiency.
- Automatic Defrost: Maintenance-free operation.
- Digital Temperature Control: Ensures precise temperature management.
- Swing Door Style: Easy access to the interior.



CLOSE UP IMAGES



TECHNICAL SPECS

Dimensions

| | |
|--------------------------------------|-------------------------|
| Product Length/Width/Height | 79.5 in, 31.5 in, 38 in |
| Counter Depth | 31.5 In. |
| Counter Top Thickness | 1.18 In. |
| Depth (Excluding Handles) | 31.5 In. |
| Depth (Including Handles) | 31.5 In. |
| Depth (Less Door) | 31.5 In. |
| Depth With Door Open 90 Degrees (In) | 49.02 In. |
| Interior Depth | 22.44 |
| Interior Height | 57.44 |
| Interior Width | 26.77 |
| Total Height | 56.5 |
| Product Weight | 657 lbs, 8 oz |
| Power Cord Length | 6.5 Ft. |

Capacity

| | |
|-------------------|---------------|
| Net Cubic Feet | 19.97 Cu. Ft. |
| Number of Doors | 3 |
| Number of Shelves | 3 |

Features & Materials

| | |
|-----------------------------|---|
| Feature One | Durable Granite Counter |
| Feature Two | Refrigerated Cabinet Storage |
| Feature Three | Easy Access Refrigerated Condiment Rail |
| Door Style | Swing |
| Exterior Material | Stainless-Steel 430 |
| Hinge Location | Top and Bottom of Door |
| Interior material | Stainless-Steel 201 |
| Shelf Material Type | Coated Metal Wire |
| Ambient Temperature Range | 32-89.6 F |
| Color - Door Handle(s) | Stainless-Steel |
| Color Finish | Stainless-Steel |
| Compressor Brand | Embraco |
| Compressor Location | Right-Hand Side |
| Defrost Type | Automatic Defrost |
| Digital Temperature Control | Yes |
| Exhaust Vent Location | Bottom of Right Side |
| Refrigerant Type | R290 |
| Temperature Control Type | Digital Thermostat |
| Temperature Range | 36-46 F |
| Casters | 6 |
| Noise (db) | 50 db |

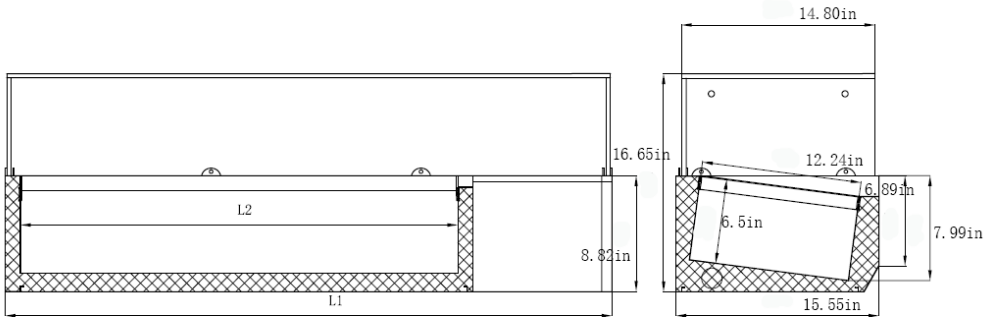
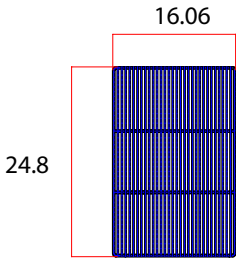
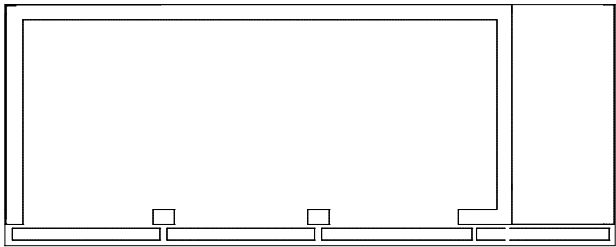
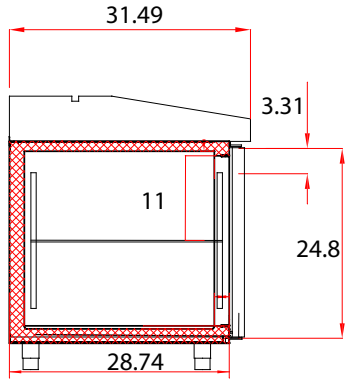
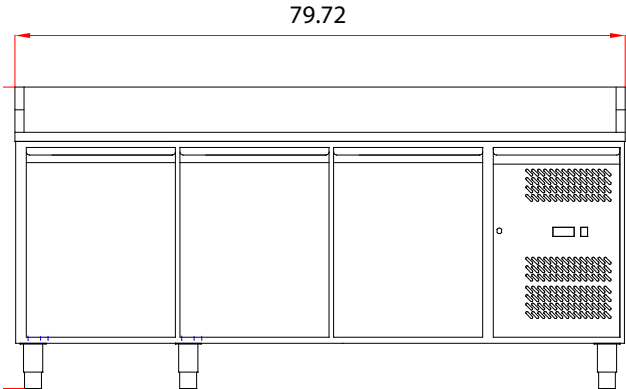
Electric Data

| | |
|------------|------------|
| Amps | 2 |
| Hertz | 60 |
| Horsepower | 0.25 |
| Phase | 1 |
| Plug Type | NEMA 5-15P |
| Voltage | 115 |
| Wattage | 230 W |

Refrigerated Stainless Steel Pan Holder

| | |
|----------------------------------|----------------------------|
| Product Length/Width/Height: | 78.74 in 15.55 in 17.13 in |
| Pan Capacity (Pans Not Included) | 9 1/3 Size |
| Compressor Location | Right-Hand Side of Unit |
| Plug Type | NEMA 6-15P |
| Power Cord Length | 5.91 Ft. |
| Voltage | 110 |

Plan View



706 Eastern Parkway STE 1G, Brooklyn NY 11213
 718-576-6342
 info@koolmore.com