



## UTILITY SINKS BROCHURE

50 Ranick Drive East • Amityville, NY 11701  
800-221-5644 • [info@imcteddy.com](mailto:info@imcteddy.com)  
[www.imcteddy.com](http://www.imcteddy.com)



# MOP SINKS

IMC Utility Sinks are made from 300 series stainless steel with an attractive brushed finish and are easily cleanable without the use of tools. All corners are coved, and all seams are fully welded and polished. Rugged type 300 series, 16GA stainless steel construction, engineered to stand up under day-in and day-out abuse. There are many different models to choose from for your specific application.

## FS MOP SINK



- FS Standard Mop Sink has integrated full height apron. FS Sink is 24" x 18" x 7" deep coved corner sink bowl with a built-in pitch to 4" waste outlet. Overall Size is 21" x 27" x 10½".

## FS-AS MOP SINK



- FS-AS Anti-Splash Mop Sink has an integral Anti-Splash design to keep water in the sink & off the floor. FS-AS Sink is 16½" x 22½" x 7" deep coved corner sink bowl with a built-in pitch to 2" IPS waste outlet. Overall Size is 21" x 27" x 10½".

## FS-H MOP SINK



- FS-H Heavy Duty Mop Sink has integrated full height apron. FS-H Sink is 24" x 18" x 12" deep coved corner sink bowl with a built-in pitch to 4" waste outlet. Overall Size is 27" x 21" x 15½".

## FS-M MOP SINK



- FS-M Medium Duty Mop Sink has integrated full height apron. FS-M Sink is 16" x 18" x 7" deep coved corner sink bowl with a built-in pitch to 4" waste outlet. Overall Size is 19" x 21" x 10½".



Contact your representatives or the factory for more information, to request a quote or to purchase our products.

## FS-D MOP SINK



- FS-D Drop Front Mop Sink features a notched out front to eliminate the need to lift heavy buckets & spillage of dirty water onto the floor. FS-D Sink is 24" x 18" x 12" deep covered corner sink bowl with a built-in pitch to 2" IPS outlet. Overall Size is 27" x 21" x 15½".

## FS-ADA MOP SINK



- FS-ADA Handicap Accessible Mop Sink has integrated full height apron. FS-ADA Sink is 33" x 33" x 12" deep covered corner sink bowl with a built-in pitch to 4" waste outlet. Overall Size is 36" x 36" x 16".

## FS-L/R MOP SINK



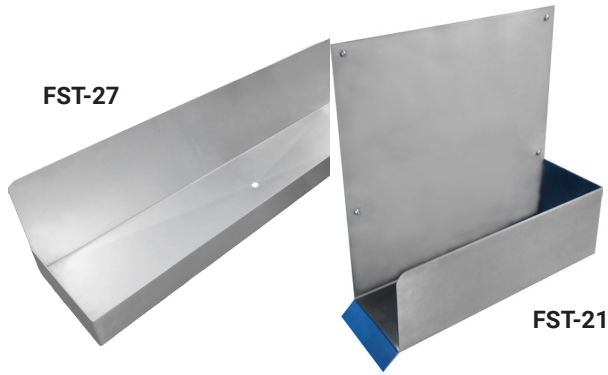
- FS-L/R Left or Right Corner Mop Sink has integrated full height apron. FS-L/R Sink is 24" x 18" x 7" deep covered corner sink bowl with a built-in pitch to 4" waste outlet. Overall Size is 21" x 27" x 10½".

## FS-C MOP SINK



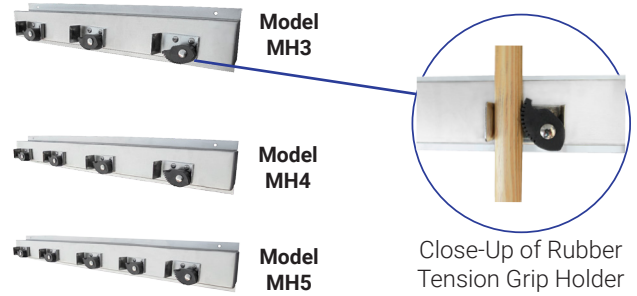
- FS-C True Corner Mop Sink has integrated full height apron. FS-C Sink is 22½" x 22½" x 8½" deep covered corner sink bowl with a built-in pitch to 2" IPS drain. Overall Size is 24" x 24" x 12".

## FST DRAINAGE TRAYS



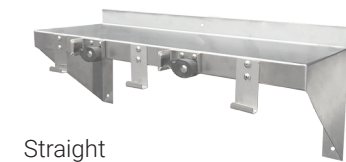
- 16GA Type 300 Series Stainless Steel, with 1½" Drain
- FST-27 Model is 27" Long x 6" Wide x 2" Deep with 4" High Backsplash
- FST-21 Model is 21" Long x 6" Wide x 6" Deep with 12" High Backsplash

## MH MOP HOLDERS



- 18GA Type 300 Series Stainless Steel, with Mounting Flanges & Closed Ends for Black Rubber Tension Grip Holder
- MH3 Model is 20" Long x 4" High x 1¾" Deep & Features (3) Grip Holders
- MH4 Model is 26¾" Long x 4" High x 1¾" Deep & Features (4) Grip Holders
- MH5 Model is 33½" Long x 4" High x 1¾" Deep & Features (5) Grip Holders

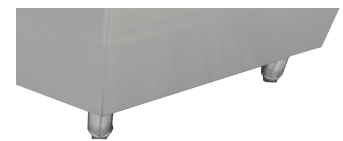
### Other Options for Your Mop Sink:



Straight  
Utility Shelf



Corner Utility  
Shelf



6" High  
Legs



Contact your representatives or the factory for more information, to request a quote or to purchase our products.

# MOP SINKS CABINETS

## MSC CABINET



- Single Mop Cabinet is made of 18GA Stainless Steel with (1) 20GA door
- The Cabinet is 30" Wide x 24" Deep x 84" High with a 5" Deep Sink with a 4" Waste Outlet
- Utility Spray Hose with Brush & a 2-Prong Mop Holder Is Included with the Unit
- The Upper Section of the Cabinet Has One Fixed Shelf Notched for Mop Handles
- Door Catches Provided, Keeps Door Closed When Not in Use

## CMSC CABINET



- 18GA Stainless Steel with (2) Two Doors
- The Cabinet is 46½" Wide x 24" Deep x 84" High
- Full Height Compartment with a 23½" Long x 19" Wide Soiled Sink
- 18½" Long x 19" Wide Filler/Soak Sink, Both 5" Deep with a 4" Waste Outlet
- The Upper Section of the Cabinet Has One Fixed Shelf Notched for a 2-Prong Mop Holder
- Door Catches Provided, Keeps Doors Closed When Not in Use



Shown w/ Optional Top Doors & Flat Top



## CMSC-R CABINET

- 18GA Stainless Steel with (1) Hinged Door on the Sink Side
- The Cabinet is 46½" Wide x 30" Deep x 84" High
- Full Height Compartment with a 23½" Long x 19" Wide Sink
- 18½" Long x 19" Wide Cabinet Space
- (2) Fixed Shelves & a Ramp to Easily Roll the Mop Bucket in for Storage
- The Upper Section of the Cabinet Has One Fixed Shelf Notched for a 2-Prong Mop Holder



# CAN WASHERS

## DL-2 CAN WASHER



- 16GA Type 300 Series Stainless Steel
- Coved Wash Basin with 1" OD Tubular Equipment Supports
- Fully Integrated Outer Shell with a 12" High Backsplash
- Flexible 44" Long Stainless Steel Hose & Brush Spray Head
- Foot Pedal Valve Controls Heavy Duty Nozzle Spray Head with a 360° Revolving Cleaning Pattern
- Bottom Drains to a 2" Brass Waste Outlet
- Mounted on Adjustable Stainless Steel Legs
- Perforated Scrap Drawer Collects Solid Waste for Periodic Disposal

## DL20-1 UTILITY SINK & CAN WASHER



- 16GA Type 300 Series Stainless Steel
- Coved Wash Basin with 1" OD Tubular Equipment Supports
- Fully Integrated Outer Shell with a 12" High Backsplash
- Flexible 48" Long Stainless Steel Hose & Brush Spray Head
- Foot Pedal Valve Controls Heavy Duty Nozzle Spray Head with a 360° Revolving Cleaning Pattern
- Bottom Drains to a 2" Brass Waste Outlet
- Mounted on Adjustable Stainless Steel Legs
- Perforated Scrap Drawer Collects Solid Waste for Periodic Disposal
- Includes a Utility Sink, Which Holds/Dries Cans & Washed Utensils



FS-C Mop Sink w/  
Optional 6" Legs (LH6)



DL20-1



Contact your representatives or the factory for more information, to request a quote or to purchase our products.

# COMPARTMENT SINKS

Scullery Sinks are constructed of 14GA or 16GA type 300 series stainless steel with single or multi-compartment bowls and double wall separators. Sinks are mounted on 16GA, 1½ stainless steel tubes with stainless steel adjustable feet for leveling. Sink bowls are coved at all corners and pitched to a 3½" waste cutout. Full length backsplash is 10" high and holes for faucets 8" on center accommodates your choice of faucets. The entire unit is finished with a satin brush finish. Drainboard extensions are separately supported with stainless steel legs, as required. IMC Compartment Sinks Model "SCS" are designed for heavy duty application in large or medium Institutional Facilities or where constant use is likely.

## 1-COMPARTMENT SINKS



SCS-1

## 2-COMPARTMENT SINKS



SCS-2  
Shown w/ Non-Flush Front & Left/Right Drainboards

## 3-COMPARTMENT SINKS



SCS-3  
Shown w/ Non-Flush Front & Left/Right Drainboards

## 4-COMPARTMENT SINKS



SCS-4  
Shown w/ Left & Right Drainboards & Undershelves

**CHECK OUT OUR PRICE BOOK FOR MORE SIZES**

Contact your representatives or the factory for more information, to request a quote or to purchase our products.



# COMPARTMENT SINK OPTIONS

Model #	Description
KPSF	12" Kettle & Pot Sink Faucet - 8" Centers, Splash Mounted
CU-12	12GA Channel Upgrade
CU-14	14GA Channel Upgrade
16D-1	16" Deep Sink in Lieu of Standard - 1 Compartment
16D-2	16" Deep Sink in Lieu of Standard - 2 Compartment
16D-3	16" Deep Sink in Lieu of Standard - 3 Compartment
BDR	Basket Drain (Replacement)
CC	Corner or Column Cut Out
CRT	Corner Turn
CST	Cover/Cutting Board (Price per Slot)
CB	Cutting Board - White Composition (per sq. ft)
DP	Drainboard Pitched to Sink
ERCO	Electrical Receptacle Cutout Only
ERCB	Electrical Receptacle with Cover & Box (220V, 30 Amps max)
EBS	Enclosed Backsplash
XDRB	Extra Drainboard
FF-50	Flanged Feet (Each)
STG	Flat S/S Perforated Sanitizer Guard
RSP	Integral Side Splash (Single Wall)
LD	Lever Drain
LDO	Lever Drain with Overflow
MID	Mod into Dishwasher
NFF	Non-Flush Front (Increases W)
OFC	Overflow Compartment 6" Wide S/S Perforated Basket
PRFF	Pre-Rinse Unit - 8" Centers, Splash Mounted
PVH	Provision for Heater
PUD	Provision for Undercounter Dishwasher
PWP	Provision for Water Pump
RG	Rack Guide
RSC	Raised S/S Scrap Chute 6" Diameter - Raised Edge 3" Deep
SB	Scrap Basket
SRB	Scrap Block
WCR	Set-Up Welded Table & Crated
SS810	Side Splash 8" or 10" High
SCV	Sink Cover - Stainless Steel
SDE	Sound Deadening
SSA	Stainless Steel Apron Over Front of Sink Bowls
SSU	Stainless Steel Undershelf - 18GA
SPB	Support Bracket for Lever Drain Handle
UC	Utility Chase
WTR-48	Waste Trough 6" x 48" x 4" Deep
WDC	Weld in Disposer Cone with Control Bracket (Note: Cone not by IMC)
WSTS	Weld Scrap Sink/Disposer or Trough to Sink
WHR	Working Height Revision



Model #KPSF



Model #PRFF



Model #PRFF-FPV-2



Model #SB  
Scrap Basket



Model #LDO

Model #TBV-1  
Sink Mounted Shelf



Model #LD



Contact your representatives or the factory for more information, to request a quote or to purchase our products.

# DISHTABLES

Clean and Soiled Dishtables are made of 14GA or 16GA type 300 stainless steel with galvanized channeling. Dishtables are mounted on 16GA, 1 $\frac{5}{8}$  stainless steel tubes with stainless steel adjustable feet for leveling. Tops are turned up 3" and finished with a 1 $\frac{1}{2}$ " sanitary rolled edge. Backsplash is 8" high with a 2" return to wall. Pre-rinse sink is 14GA stainless steel, coved corner and includes a stainless steel perforated basket with tubular rack guides welded in. The entire unit is finished with a satin brush finish. Choice of straight, corner or island dishtables.

## CLEAN DISHTABLES

### SCDT DISHTABLES



**STRAIGHT**

### SCCD DISHTABLES



**CORNER**

### SICD DISHTABLES



**ISLAND**

## SOILED DISHTABLES

### SSDT DISHTABLES WITH PRE-RINSE SINK



Shown w/  
Optional Scrap  
Chute & Rack  
Slides

**STRAIGHT**

### SCSD DISHTABLES WITH PRE-RINSE SINK



Shown w/ 10"  
Backsplash,  
Pre-Rinse Sink &  
Pass-Thru Shelf

**CORNER**

### SISD DISHTABLES WITH PRE-RINSE SINK



Shown w/ 8" Deep  
Pre-Rinse Sink, Scrap  
Basket, Scrap Block,  
Rack Guide, Crossrails,  
Legs & Optional TBV-2  
Table Shelf

**ISLAND**

***CHECK OUT OUR PRICE BOOK FOR MORE SIZES***

Contact your representatives or the factory for more information, to request a quote or to purchase our products.



# SOILED DISHTABLES

## ISDS DISHTABLES WITH LANDING SHELF & PRE-RINSE SINK



Shown w/ Optional Rack Shelf, Landing Shelf, Garbage Chute (Custom)

## SUSD DISHTABLES WITH LANDING SHELF & PRE-RINSE SINK



Shown w/ Optional Rack Slides

# SOAK SINKS

## MSK PORTABLE SOAK SINKS



MSK-12

Portable Soak Sinks are 16GA type 300 series stainless steel with a 1½" waste outlet with hose for draining into floor drain. Sink has interior coved corners with rounded edges and is mounted on 1⅝" diameter 16GA stainless steel legs and 5" diameter casters.

## UCS UNDERCOUNTER MOBILE SINKS

UCS-SM12

UCS-SM8



Shown w/ Optional Chute

Shown w/ Optional Chute

Undercounter Mobile Sinks are 16GA type 300 series stainless steel with an integral drain with a lever handle waste outlet. Sink has interior coved corners with rounded edges and is mounted on 1⅝" diameter 16GA stainless steel legs and 5" diameter casters.



# DISHTABLES OPTIONS

Model #	Description
B810	8" or 10" Backsplash
PRS-10	10" Deep Pre-Rinse Sink
KPSF	12" Kettle & Pot Sink Faucet - 8" Centers, Splash Mounted
CU-12	12GA Channel Upgrade
CU-14	14GA Channel Upgrade
US-16	16GA S/S Undershelf Upgrade
ADD14	Additional Length 14GA (per sq. ft)
ADD16	Additional Length 16GA (per sq. ft)
BDR	Basket Drain (Replacement)
BFJT	Bolted Field Joint
CC	Corner or Column Cutout
CRT	Corner Turn
CRTW	Corner Turn w/ Curved Rack Guide on Top
CST	Cover/Cutting Board (Price per Slot)
CFE	Cutout - Finished Edge
CRE	Cutout - Raw Edge
DRKS	Dish Rack Storage Spaced 6" Apart (Depth of Table)
DPG	Drip Pan & Grate, per 4 ft Unit
EBS	Enclosed Backsplash
FF-50	Flanged Foot (each)
RSP-2	Integral Sink Splash - Double Wall
RSP	Integral Sink Splash - Single Wall
LD	Lever Drain
LDO	Lever Drain w/ Overflow
PTS	Pass Thru Shelf
PTWF	Pass Thru Window Frame
PRB	Pre-Rinse Sink 20" x 20" x 5" w/ Basket & Rack Guide
PRFF	Pre-Rinse Unit - 8" Centers, Splash Mounted
TLS	Provision for Table Limit Switch
PUD	Provision for Undercounter Dishwasher
RG	Rack Guide
RSW-2	Rack Rest - Tubular
RSD	Rack Shelf - Double Service
RST	Rack Shelf - Table Mounted
RSW	Rack Shelf - Wall Mounted
RS	Rack Slide
SB	Scrap Basket
RS	Rack Slide
SB	Replacement Scrap Basket
SRB	Scrap Block
SS810	Side Splash 8" or 10" High
SCV	Sink Cover - Stainless Steel
SDE	Sound Deadening
SSU	Stainless Steel Undershelf
SPB	Support Bracket for Lever Drain Handle
TWC	Tack Welded Channel Under Top
RSW-T	Tubular Rack Shelf - Wall Mounted
WTR-24	Waste Trough 6" x 24" x 4" Deep w/ Removable Basket
WDCR	Weld in Disposal Collar (Note: Collar by Others)
WDC	Weld in Disposer Cone w/ Control Bracket (Note: Cone not by IMC)
WSTS	Weld Scrapping Trough to Sink/Disposal Cone
WHR	Working Height Revision



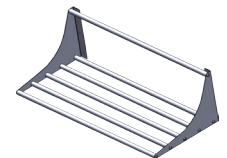
Model #SB  
Scrap Basket



Model #RSW  
Wall Mounted Rack Shelf



Model #RSW-2  
Rack Rest - Tubular



Model #RSW-T  
Tubular Rack Shelf -  
Wall Mounted



Model #RST  
Table Mounted  
Rack Shelf



Model #RG  
Rack Guide

Contact your representatives or the factory for more information, to request a quote or to purchase our products.





**IMC is a Consultant/Designer driven manufacturer of Food Service Equipment. We welcome product recommendations and upgrade suggestions from you. Our mission is to introduce new and innovative products in food service equipment and storage/handling systems.**

**IMC only uses 300 series stainless steel which is recommended for high corrosion resistance and uniformity of finish. Every IMC product will perform its intended function even in the most punishing work environment.**

**Production begins with Laser and CNC machine work and the final product is finished with a non-directional brushed satin. The finish has the ability to hide and blend scratches for many years. Each product is then carefully inspected and protected for delivery to the customer.**

**For a complete catalog or the representative nearest to you, Visit [www.imcteddy.com](http://www.imcteddy.com) or contact us below.**



**50 Ranick Drive East • Amityville, NY 11701**

**800-221-5644 • [info@imcteddy.com](mailto:info@imcteddy.com)**

**[www.imcteddy.com](http://www.imcteddy.com)**

