



Project Name: _____

Item #: _____

Model #: _____

WS HAND SINK INSTALLATION GUIDE

For Design and Installation Assistance
Call: 800-221-5644
info@imcteddy.com

50 Ranick Drive East • Amityville, NY 11701
(P) 800-221-5644 • (F) 631-789-8881

www.imcteddy.com

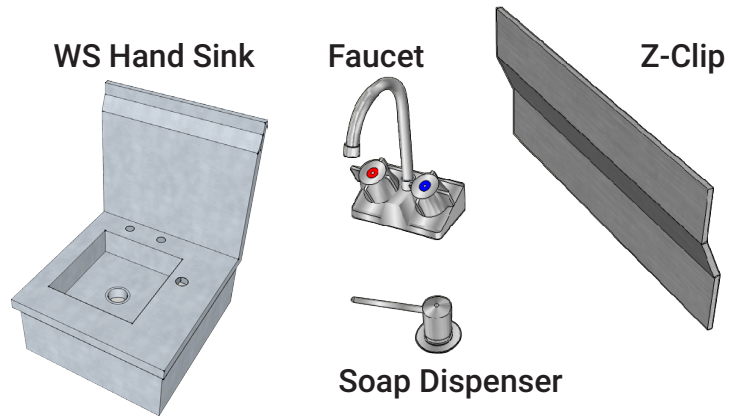
INTRODUCTION

Installing the IMC Teddy Hand Sink is a straightforward procedure that can be accomplished with normal construction materials and techniques. Installation procedures may vary due to field conditions and state regulations. Please note that the following instructions are recommendations only. **These instructions apply to all Wall Mounted Hand Sink Models.** The installer is responsible for proper setting and making sure the appropriate codes are followed. Please contact the IMC Teddy Engineering Department (800-221-5644) prior to considering retrofit installations.

Please read the attached information carefully, as much of the information provided is reflecting proven installation techniques used in previous installations.

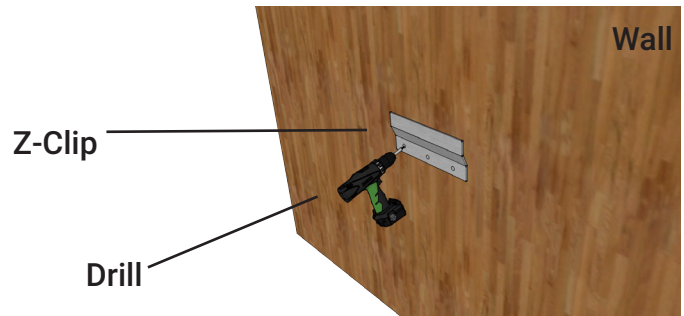
Parts Included

- WS Hand Sink
- "Z clip" Mounting Bracket
- Faucet (Sold Separately)
- Soap Dispenser (Sold Separately)



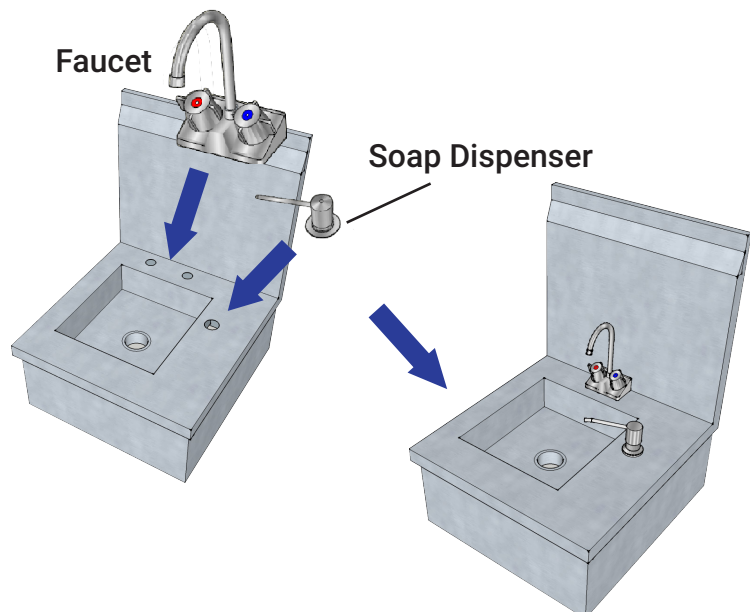
Step 1:

Position z-bracket onto wall at the appropriate height above the floor and mark holes for drilling. (Make sure bracket is level.) Once holes are drilled screw bracket to wall. (Hardware not included.)



Step 2:

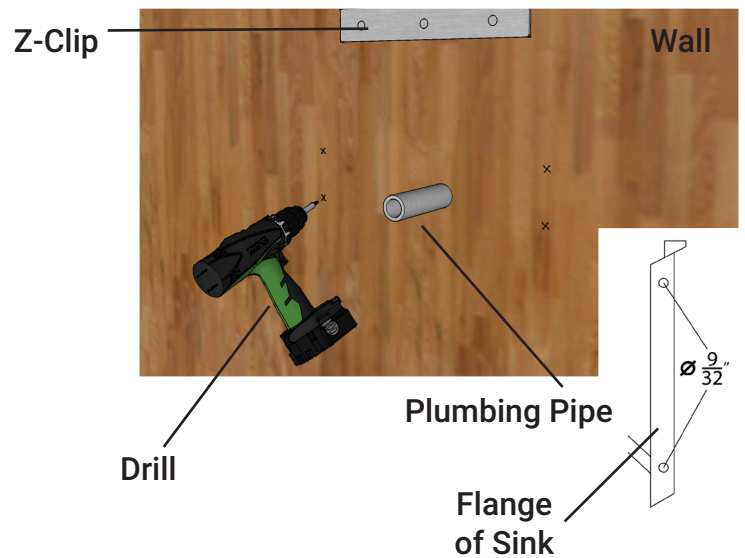
Install include parts to sink, in this case, faucet & soap dispenser.



(Model shown is WS Hand Sink)

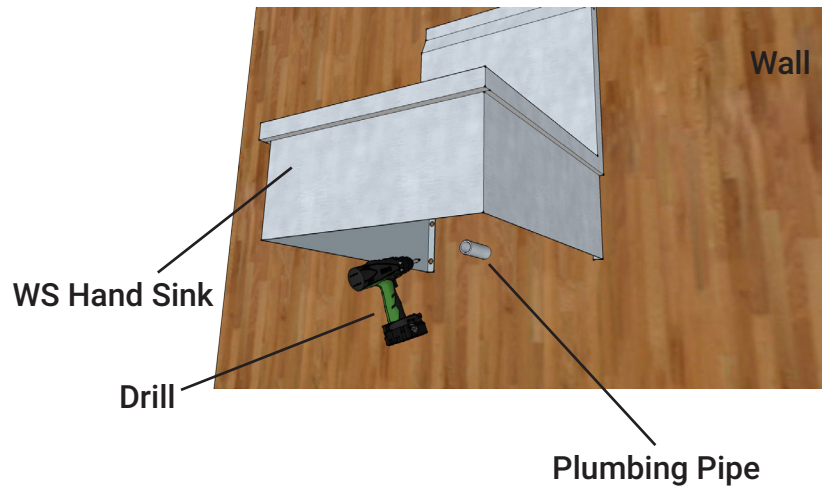
Step 3:

Place sink on z-bracket and locate holes on apron flange at the back of the sink, mark for drilling. Remove sink to drill holes.



Step 4:

Place sink back on the bracket, align the holes and screw apron securely to the wall.



Step 5:

Make all necessary plumbing connections to faucet and waste drain. Apron panel is hollow for access to plumbing pipe.

