

 **General Information**

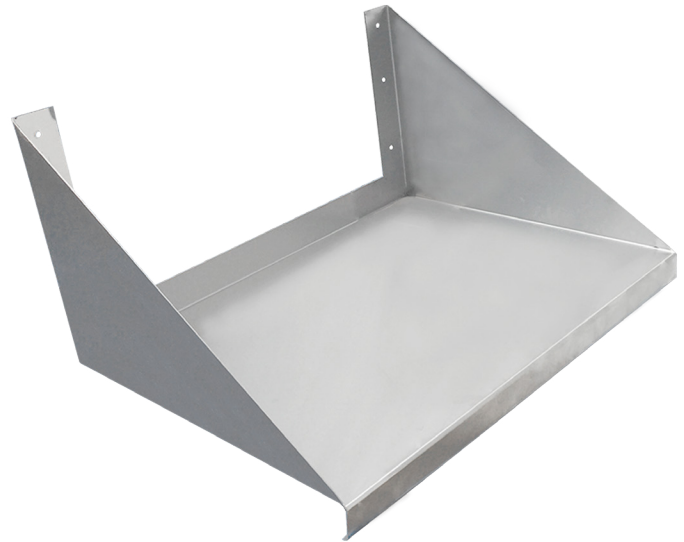
Project Name: _____

Consultant: _____

Item #: _____

Model #: _____

Quantity: _____



 **Specifications**

MVS Microwave Shelf is constructed of 16GA stainless steel, type 300 series 18/8, and polished to a brushed finish.

Shelf has a 2" turn up at rear with 1 1/2" down on (3) sides with 1/2" return at front. Shelf has 16GA stainless steel brackets with provisions for mounting.

18GA construction is available.

 **Product Guide**

IMC stainless steel Microwave Shelf, you'll be able to keep your commercial microwave within easy reach without taking up your valuable counter space. It's also more space efficient than a microwave cart or stand, which can be bulky and block walking areas in your kitchen.

Made with durable stainless steel, you can be sure your microwave is secure and steady when you use this shelf.

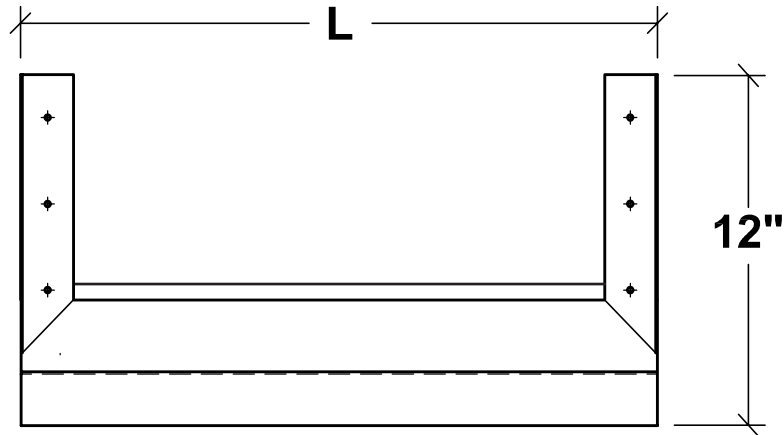
 **Options**

- Consult Factory for Options

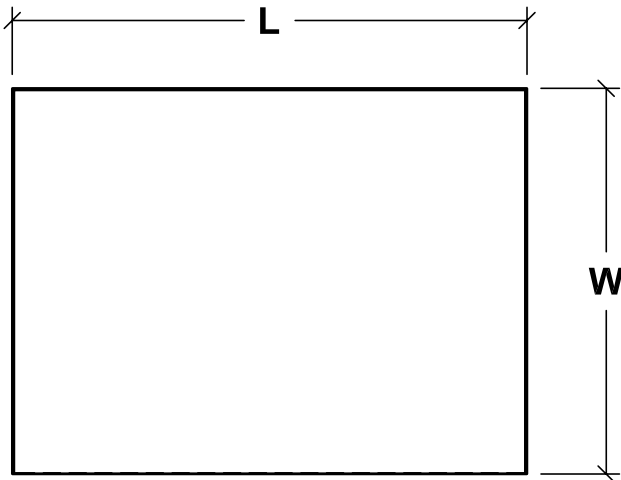




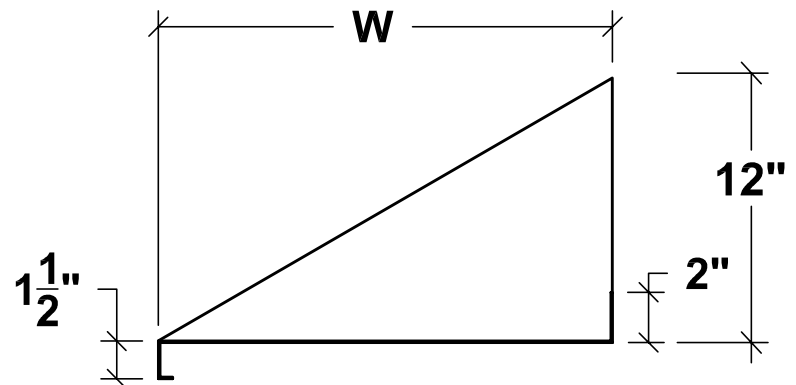
DRAWINGS



FRONT ELEVATION



PLAN



SIDE ELEVATION

MICROWAVE SHELF

Model #	Size (W x L)
□ MVS-1824	18" x 24"
□ MVS-2424	24" x 24"
□ MVS-2436	24" x 36"

Specifications subject to change without notice.

MVS-60 0124