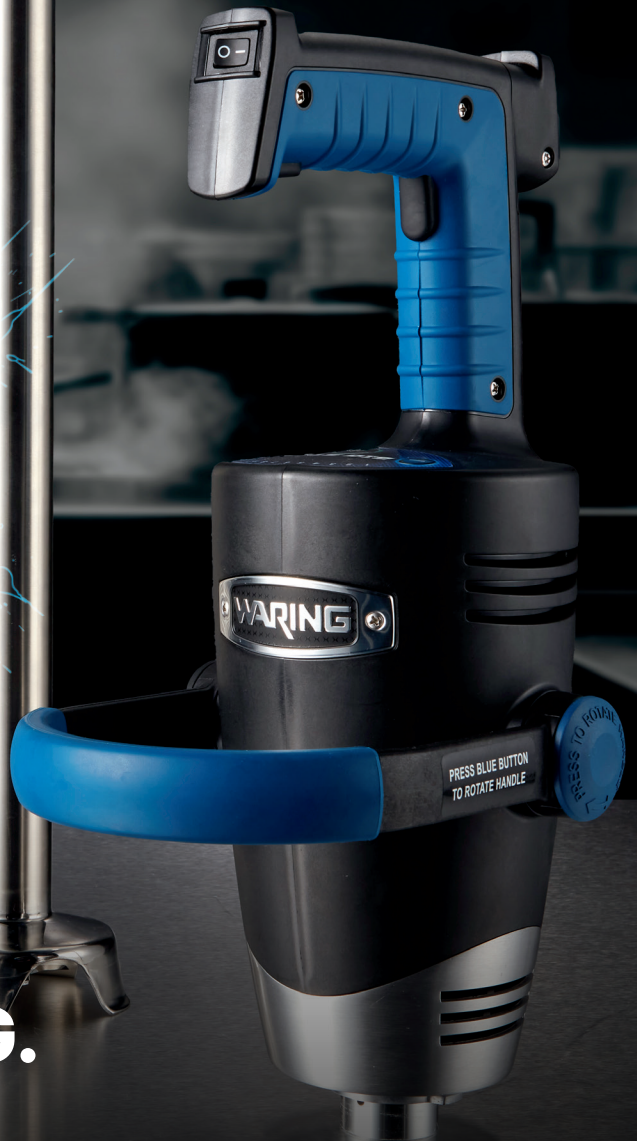


# WARING

# BIG STIX<sup>®</sup> EVOLUTION X<sup>®</sup> IMMERSION BLENDERS



## SEAMLESS BLENDING. ULTIMATE CONTROL.

Take your blending experience to the next level of power. Designed for professionals, built for performance – Waring puts control in your hands.



Powerful motor with digital controls for precise control



Ergonomic dual-trigger handles and rubberized comfort grip



Patented pivoting second handle ensures comfort and control



LEARN MORE!

Come explore at [waring.com](http://waring.com)



@waringproducts

**BIG STIX® EVOLUTION X® SERIES:**

- Powerful 1.5 HP, 1,145W variable-speed motor (up to 18,000 RPM)
- Ergonomic dual-trigger handle and rubberized comfort grip for added control and reduced fatigue
- Patented pivoting second handle ensures balance, comfort, and control during use
- Electronic control panel with easy-touch buttons for seamless blending, pureeing, and emulsifying
- Precise speed selection (1-9) with LED indicators
- Durable, user-replaceable couplings and serviceable cord for extended product life
- Universal power pack fits all shafts and whisk attachments
- All-purpose stainless steel blade for versatile use
- Removable and dishwasher-safe stainless steel shaft, completely sealed for large mixing capacity
- Continuous ON feature for hands-free operation
- Convenient cord wrap for easy storage
- Limited 2-year warranty

- WSB500X:** 12" shaft, 10 gallon/40 quart capacity
- WSB550X:** 14" shaft, 15 gallon/60 quart capacity
- WSB600X:** 16" shaft, 25 gallon/100 quart capacity
- WSB650X:** 18" shaft, 35 gallon/140 quart capacity
- WSB700X:** 21" shaft, 50 gallon/200 quart capacity



WSB500X

WSB550X

WSB600X

WSB650X

WSB700X

**ACCESSORIES**



**12-21" IMMERSION BLENDER STAINLESS STEEL SHAFTS**  
WSB500XST, WSB550XST, WSB600XST,  
WSB650XST, WSB700XST



**10" STAINLESS STEEL WHISK ATTACHMENT**  
WSB2WX



**10" WHIPPING PADDLE SET**  
WSBWP



**IMMERSION BLENDER BOWL CLAMP**  
WSBBC



**IMMERSION BLENDER WALL HANGER**  
WSB01X



**BLADE REPLACEMENT KIT (FOR WSB500X)**  
CAC180



**BLADE REPLACEMENT KIT (FOR WSB550X-WSB700X)**  
CAC181