



Chef Tables - Stainless Steel Top

Stainless Steel Cabinet Base Tables - No Doors

Certifications:



Features:

- 1 5/8" x 6" Straight S/S Leg
- Legs Adjust 1" in Height
- 96" Units have a Center Mullion
- Extra Supporting "C" Channels
- Casters Available



Material:

- T-304 14 ga. Stainless Steel Top
- T-304 18 ga. Stainless Steel Body
- Stainless Steel Legs & Feet

Options:

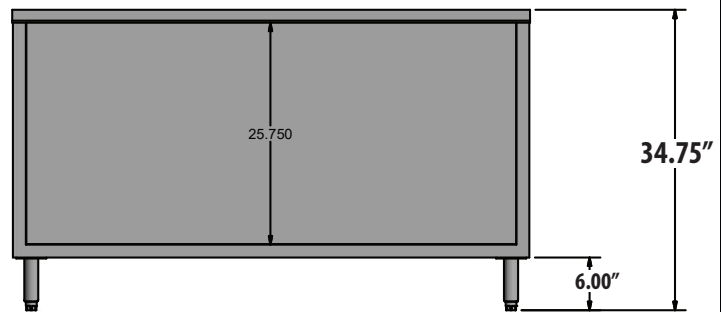
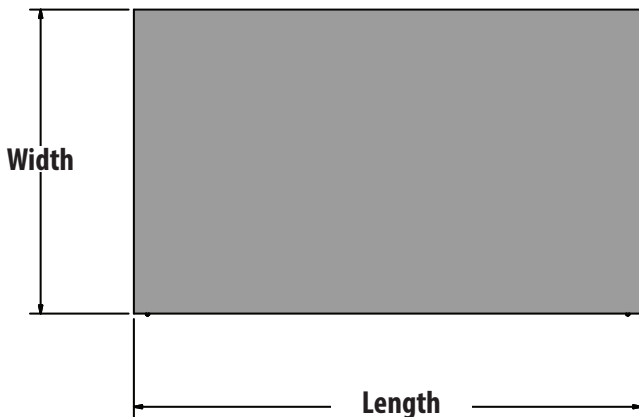
- Adjustable Shelf



Open Door	Unit Size (W x L x H)	Product Weight (lbs)	*Top Capacity	*Shelf Capacity	*Total Capacity
CST-3648	36" x 48" x 34.75"	163.00	1000	300	1000
CST-3660	36" x 60" x 34.75"	196.00	940	150	1000
CST-3672	36" x 72" x 34.75"	250.00	600	100	700
CST-3684*	36" x 84" x 34.75"	275.00	1500	900	1500
CST-3696*	36" x 96" x 34.75"	330.00	1500	600	1500
CST-36120*	36" x 120" x 34.75"	400.00	1500	300	1500

* Has a Center Mullion

* Weight must be evenly distributed



PRODUCT DATA SHEET

BK RESOURCES

