

# KRATOS

## Operation and Maintenance Guide for Universal Heated Cabinets Series

28W-373



28W-372



28W-371



100% Pre-Tested Electrical Assembly



# FOOD SETTINGS GUIDE

## Breads

Biscuit, Buttermilk Mini	175°(79°C)
Croissants, Sliced	155°(68°C)
French Toast, Thin Slice	175°(79°C)
Waffles, Original	175°(79°C)
Pancakes	175°(79°C)
Pizza	175°(79°C)
Rolls	175°(79°C)
Dough(Proofing)	90-100°(32-38°C)

## Meats

Prime Rib	175°(79°C)
Hamburgers	180°(82°C)
Hot Dogs	170°(77°C)
Roast Beef	175°(79°C)
Roast Pork	175°(79°C)
Ribs(Pork Spareribs)	175°(79°C)

## Poultry

Chicken, Boneless, Skinless	175°(79°C)
Chicken, Thigh, Baked, Fried	175°(79°C)
Chicken, Full Breast	175°(79°C)
Chicken, Drum, Baked, Fried	175°(79°C)
Chicken, Leg	175°(79°C)
Chicken, Fried Full Breast	175°(79°C)
Chicken, Fried Thigh	175°(79°C)
Chicken, Fried Drum	175°(79°C)
Chicken, Fried Boneless Skinless	175°(79°C)
Chicken, Whole Roasted	170°(77°C)
Turkey	175°(79°C)

## Vegetables

Broccoli, Spears	175°(79°C)
Carrots, Sliced, Crinkled	175°(79°C)
Cauliflower, Clusters IQF	175°(79°C)
Corn on the Cob	180°(82°C)
Mixed Vegetables	175°(79°C)

## Starches

Fry, Regular 3/8"	195°(91°C)
Potatoes, Mashed	175°(79°C)
Potatoes, Baked	180°(82°C)
Potatoes, Scalloped	175°(79°C)
Pasta, Elbow Macaroni	180°(82°C)
Rice	180°(82°C)
Lasagna, Meat Sauce & Cheese	185°(85°C)
Beans	175°(79°C)

## Fish

Fish, Baked(Cod Loin)IQF	170°(77°C)
Fish, Batter Dipped	175°(79°C)

### CAUTION

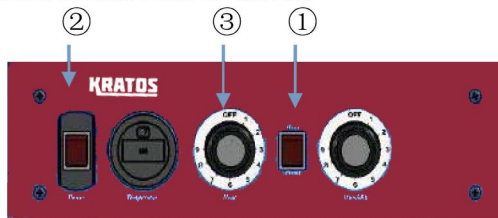
- WATER PAN MUST BE IN PLACE DURING MODULE OPERATION.
- UNPLUG CABINET FROM WALL AND ALLOW CABINET (AND WATER) TO COOL BEFORE CLEANING OR SERVICING.
- DO NOT SPRAY OR POUR WATER ON THE MODULE WHEN CLEANING AND DO NOT IMMERSE THE MODULE IN WATER.
- WIPE WITH A DAMP CLOTH AND DRY WITH A TOWEL.
- KEEP CABINET AND MODULE CLEAN. ACCUMULATION OF GREASE AND OTHER DRIPPINGS MAY IGNITE.

# OPERATING INSTRUCTIONS

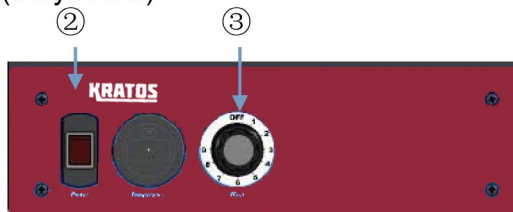
## BASIC CABINET SETUP

- Refer to DATA PLATE for electrical requirements. Cabinets rated at 120V 1500 watts must be plugged into a 125 VAC 15 amp receptacle and must be used on an individual branch circuit. **DO NOT MODIFY CORD PLUG.**
- With **POWER** switch **OFF**, plug into 125 VAC grounded receptacle.
- Fill water pan to top with clean **HOT** tap water for Proofing or if moisture is desired for Holding. Check water level every 3 hours (2 hours when Proofing) and refill with clean **HOT** tap water as necessary. Water pan does not have to be filled for Heating. Proofing requires water pan to be filled.

## HEATING INSTRUCTIONS

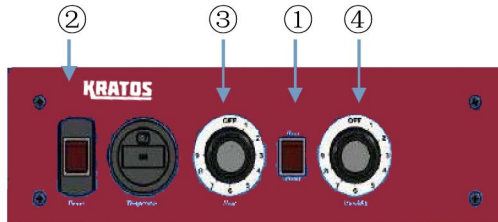


(Only HEAT)



- Set Combination Module switch to **HEAT**
- Set **POWER** switch to the **ON** position. Power indicator light.
- Set **TEMPERATURE** control to **9**.
- Pre-heat cabinet until desired temperature is reached (typical heat-up time from 77°F (25°C) ambient to 160°F (71°C) is approximately 45 minutes). Cabinet with insulate temperature is reached 185°F (85°C) approximately 45 minutes.
- Re-set **TEMPERATURE** control and adjust as necessary to reach desired temperature (setting 6-8 is typical for 150°F (66°C) to 160°F (71°C)).

## PROOFING INSTRUCTIONS



- Set Combination Module switch to **PROOF**
- Set **POWER** switch to the **ON** position. Power indicator light.
- Set **TEMPERATURE** control to **2**.
- Set **HUMIDITY** control to **9**.
- Pre-heat cabinet until desired temperature and humidity is reached (typical heat-up time from 77°F (25°C) ambient to 95°F (35°C) and 95% relative humidity is approximately 30 minutes).
- Adjust settings as necessary to reach desired temperature and humidity levels.

## **TABLE OF CONTENTS**

<b>General Information.....</b>	<b>4</b>
<b>Installation.....</b>	<b>4</b>
<b>Maintenance.....</b>	<b>4</b>
<b>Operating Instructions.....</b>	<b>2</b>
<b>Service Specifications.....</b>	<b>5</b>
<b>Recommended Temperature Guidelines-Food Holding Chart.....</b>	<b>2</b>
<b>Drawer Assembly.....</b>	<b>6</b>
<b>Cabinet Assembly.....</b>	<b>8-10</b>
<b>Electric Schematic Power Supply.....</b>	<b>11</b>
<b>Trouble Shooting.....</b>	<b>12</b>
<b>Warranty Information.....</b>	<b>12-13</b>

### **SAFETY INFORMATION**

**WARNING:** Follow all food safety guidelines. Pre-heat the cabinet to the desired temperature before placing cooked, hot food into the cabinet. This is not a re-thermalizing cabinet. Food must be at the appropriate temperature before being placed into this cabinet. Use a food probe to check internal food temperature—the cabinet temperature is not necessarily the internal food temperature.

**WARNING:** Only factory approved service agents should attempt to service, repair or replace electrical components, wiring or power cord.

**WARNING:** Unplug the cabinet before cleaning or servicing. Do not wash the cabinet with a water jet or high pressure water.

**WARNING:** This cabinet is for hot food holding applications only.

**CAUTION:** Do not spray or pour water into the module. To clean the cabinet, wipe with a damp cloth and dry with a towel. Use only cleaning agents approved for aluminum.

**CAUTION:** Water dripping onto the floor from open doors can be a slip hazard

## **General Information**

---

The Kratos Universal Heated Cabinet Series will fit universal pans, hold heated food hot at a constant temperature and supply humidity for proofing when the application applies. This cabinet is NOT a cooking appliance.

### **Heat Unit Specifications**

Removable bottom mount proof / heat unit (Part No.HCD1500) or only heat unit (Part No.HCD1500H).  
Rated Power: 1500 W, 120V, 60HZ

### **CAUTION**

If any damage is found, do not attempt to operate the unit. Call your dealer IMMEDIATELY to arrange for service.

### **INSTALLATION**

Position your unit on a stable, level surface and plug in the supplied cord into any grounded 120-volt AC, 15 amps power supply dedicated breaker. It is highly recommended that you use ONLY the power cord supplied. Use of a dedicated circuit will help to ensure operational efficiency. Do not operate the unit with an extension cord.

15Amp Outlet

For Cabinet rated 120V 1500Watt



### **MAINTENANCE**

The equipment has been designed to require minimum maintenance and has been constructed to meet National Sanitation Foundation(NSF) and U.S. Public Health Service standards. Non-toxic chemical cleaners or mild detergents are recommended for cleaning of fixtures. DO NOT use steel wools of any kind. Steel wool particles will work into the grains of the metal causing corrosion. Also, these particles can cause a health hazard. If scouring is required, use a non-abrasive type of cleaner. Do not use caustic solutions on your equipment. Hosing or steam cleaning should not be necessary to keep these fixtures clean and sanitary. Do not allow water or steam to come into contact with electrical components. Never power wash or steam clean the cabinet with the power drawer inserted.

### **CAUTION**

Be sure to disconnect power source before cleaning and servicing the unit. Liability for improper or careless use is the responsibility of the equipment owner or persons servicing the unit, including the authorized service agent.

**NOTE:** The internal air circulation blower and 1500w heater element (controlled with the Heat Thermostat) will operate continuously when the power switch is turned ON.

### **HEAT THERMOSTAT**

The controlling range is 80°F to 185°F. The dial numbers, 1 thru 9, do not relate to a specific calibrated temperature. Temperature settings must be obtained through familiarization with the unit. The dial also has an OFF position to turn heater unit off.

### **HUMIDITY THERMOSTAT**

To control humidity range from 30% to 100%, humidity settings must be obtained through familiarization with the unit. The dial numbers, 1 thru 9, do not relate to a specific calibrated humidity. The dial also has an OFF position to turn humidity off.

To maintain low heat range between 85°F to 100°F, switch to proof mode and adjust heat knob to desired heat range. Allow 45 minutes to pre-heat in proof cycle.

## **Service Specifications**

---

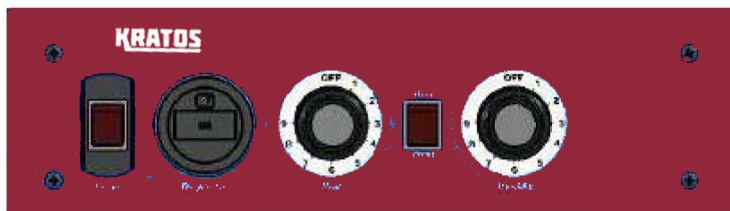
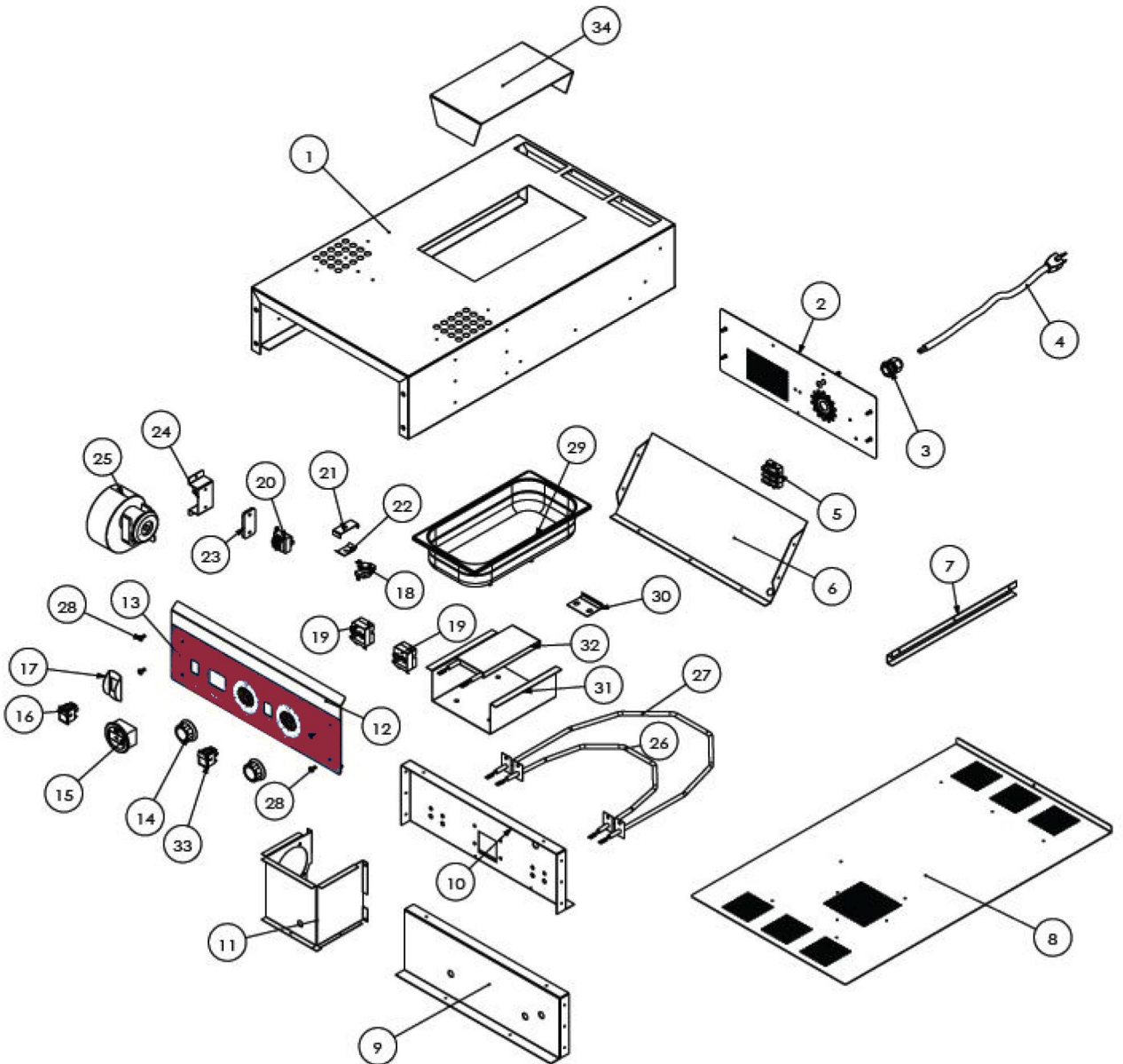
The heater-Proofing is an aluminum transport cabinet with heaters to function as a hot food holding cabinet, and/or as a proofing cabinet.

The heater, or heat drawer, is slid into place on the lower ledges of the cabinet. An electrical power cord is provided and plugged into the drawer through an access hole in the back of the cabinet. The main power switch on the front of the drawer, when switched ON, will turn on the light in the switch and turn on the air circulating fan in the drawer. The circulating fan and 1500w heater element will operate continuously while the unit is ON.
















The thermostat control knobs are mounted to the left and right of the HEAT/PROOF switch. The left thermostat knob controls the heat in the cabinet from 1 ( approx. 30% relative humidity ) to 9 (100% relative humidity ). Average setting will be 6 (approx. 85% relative humidity ).

# Drawer Assembly

## 28W-156 Drawer Diagram

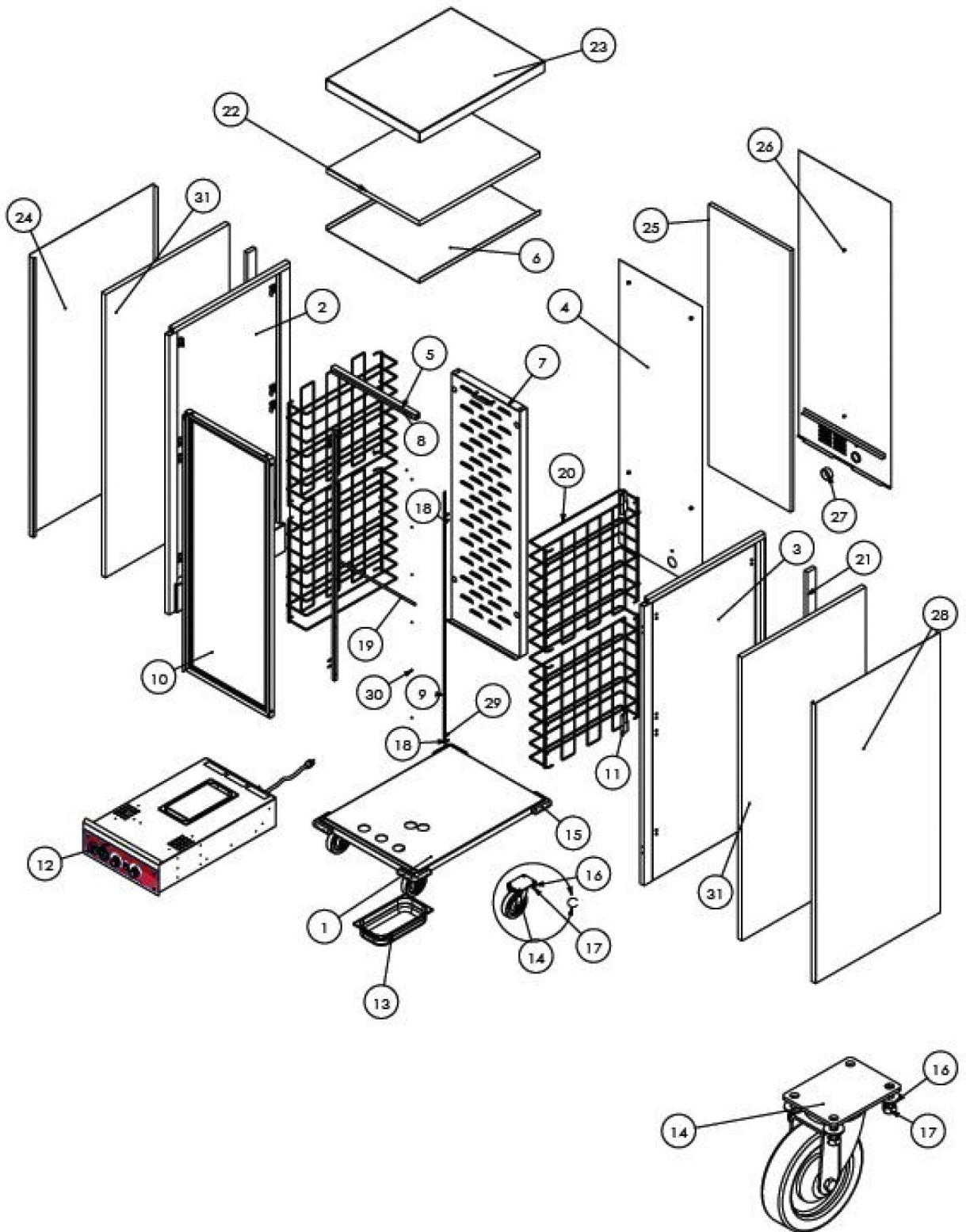


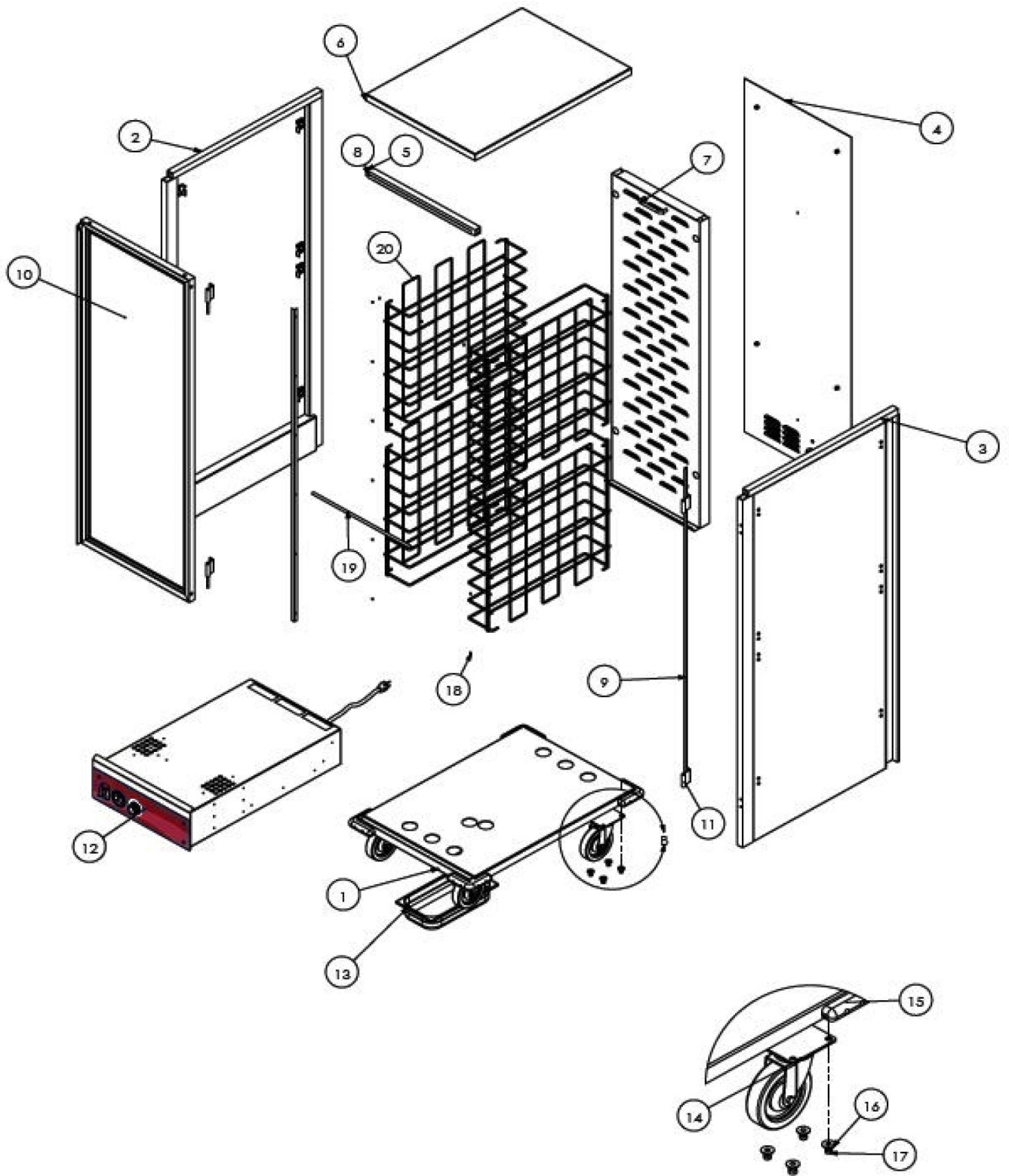
## Drawer Replacement Parts

No.	Photo	Part No.	Part Description	28W-156 Qty
03		HCD-030	Cable Bushing	1
04		HCD-031	Power Cable	1
05		HCD-026	Terminal Block	1
14		HCD-035	Knob	2
15		HCD-024	Thermometer	1
16		HCD-016	Main Switch with light Red	1
18		HCD-019	Limit Temp. Thermostat	1
19		HCD-034	Temp. Thermostat	2
20		HCD-017	Transformer	1
25		HCD-012	Blower and Motor Assembly	1
27		HCD-011	Heating element 900W	1
26		HCD-010	Heating element 600W	1
29		HCD-008	SS Water Pan	1
32		HCD-009	Heating element 600W	1
33		HCD-036	Switch Heat/Proof Red	1

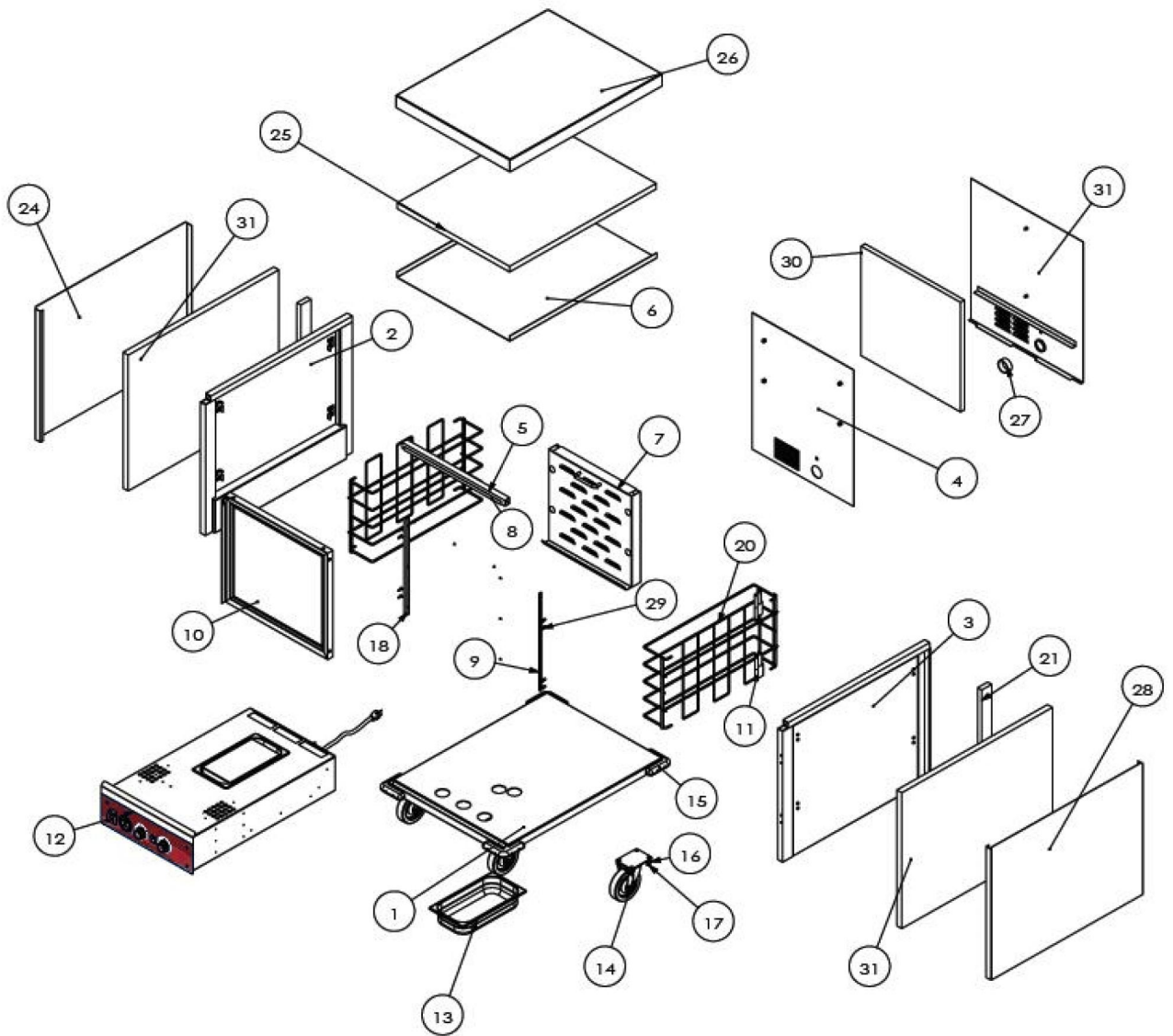
# Cabinet Assembly

28W-372 Diagram



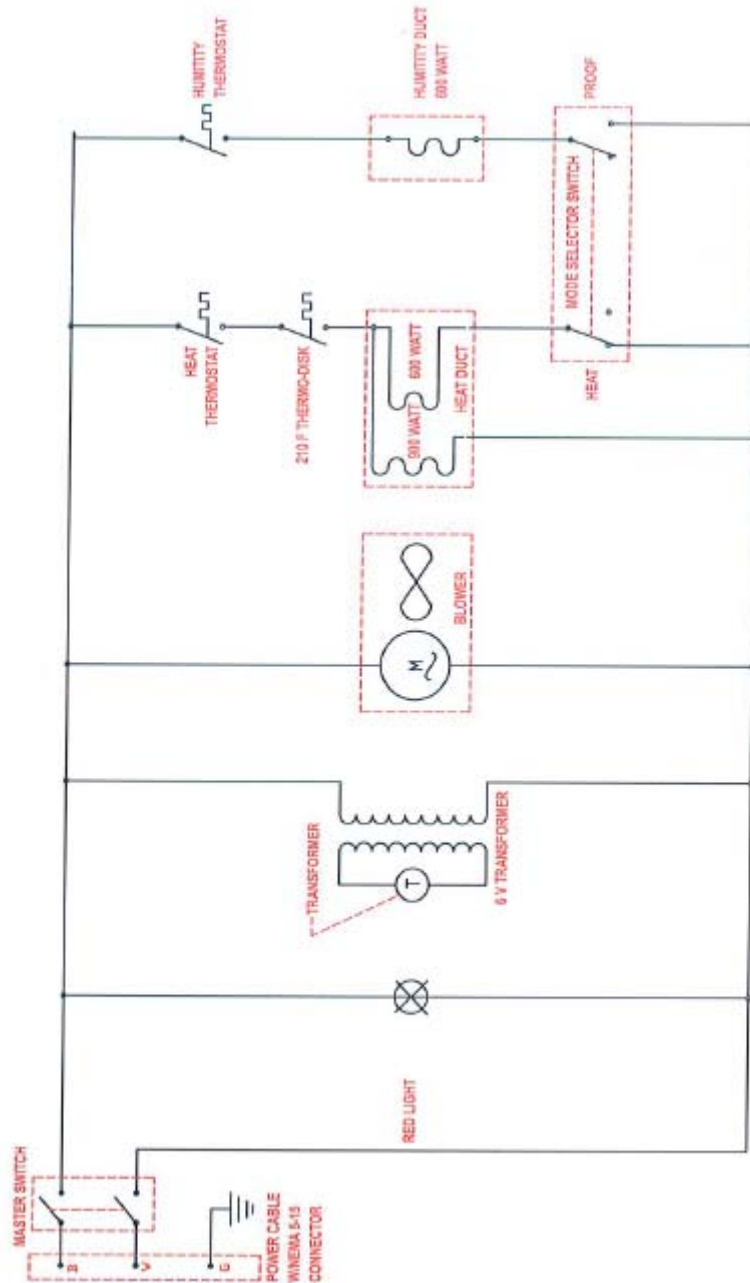


# 28W-371 Diagram



# Electric Schematic Power Supply

HEAT/PROOF Models (28W-156 Drawer)



---

# Troubleshooting

---

## **CAUTION**

Before disassembling unit, electrical power must be disconnected by unplugging the unit. Failure to unplug the unit prior to servicing may result in electrical shock.

Each unit is shipped with this instruction manual and should be used as a reference guide for all service areas. The manual provides a picture of the drawer, showing the location of electrical components and a description of each. If the unit does not operate correctly, or malfunctions for any reason, the following checklist should provide a solution.

- 1) Check to make sure power cord is firmly plugged into the wall outlet.
- 2) Check circuit breaker of wall outlet and reset if necessary.

### IF unit fails to start, please do the following:

- 3) Remove heat drawer from cabinet. Remove bottom cover of drawer. Visually inspect to observe for:
  - a . Loose or disconnected wires
  - b . Black marks or burn marks on any components
  - c . Loose heating elements
- 4) If any burn marks or discoloration of wires is noted on any component, the component along with all wires attached to the damaged component must be replaced.
- 5) If a heater element is loose, or if it has broken loose from mounting tabs, the wires will short out on the metal, causing permanent damage. Both the element and main power switch (with wires on switch) must be replaced.
- 6) If the temperature on the L.E.D. Thermometer is not reading a constant temperature, it must be replaced along with it's power supply transformer.

---

## **1-YEAR WARRANTY**

---

Kratos offers a warranty to the original purchaser of new equipment, that the model of equipment will be free of defects in material and workmanship for a period of 1 year from the original date of delivery. Equipment must be installed by a qualified installer where applicable. Warranty coverage is only valid in the Contiguous United States & Canada. It is for commercial customers and is not transferrable. Kratos will repair, provide replacement components, replace the entire unit or refund the purchase price to satisfy the warranty obligation. Kratos makes no other warranties, express or implied, statutory or otherwise, and hereby disclaims all implied warranties, including the implied warranties of merchantability and of fitness for a particular purpose.

### **The 1 Year warranty does not cover:**

- Failure to install and/or use equipment within proper operating conditions as specified by Kratos. This includes but is not limited to mobile, outdoor or mobile applications.
- **For commercial use only, residential use voids warranty.**
- **Mobile applications fall under a different level of coverage as outlined below.**
- **Outdoor use will void the warranty.**
- Issues related to improper installation which are the responsibility of the installer.
- Failure to properly maintain equipment or failure due to lack of routine cleaning.
- Parts deemed by Kratos to be normal wear and tear parts including, but not limited to, casters, hoses, grates, glass and rubber components.
- Products that have been modified, abused, or misused. Any products that have been exposed to corrosive or other cleaners not intended for use on stainless steel will void the warranty.
- Any products sold outside the contiguous United States OR Canada.
- Any products where the original sale cannot be determined. No order #, invoice or receipt to provide proof of purchase will result in no warranty coverage.
- Labor or service not authorized by Kratos is not covered under this warranty.
- Freight damage must be made at time of delivery and addressed with the carrier for compensation.
- Kratos will not be liable for any parties that experience loss of product, consequential damage, lost business, or any other expenses.
- Defects or damage due to improper maintenance, wear and tear, abuse, misuse, vandalism, or Act of God

The warranty does not cover overtime, holiday or weekend rates or other off-hour rates. Kratos reserves the right to deny coverage after a service technician is on site based on the above exclusions. Kratos will not be responsible for any service charges from non-warranty related labor and/or parts.

**Food Truck/Mobile Application Warranty**

*Valid only in Contiguous United States*

Kratos warrants all new equipment sold to food truck or other mobile applications for a period of **90 days** from the date of delivery and proper installation. Contact your authorized place of purchase for assistance.

**For Warranty Inquiries or Service**

Have your model number, serial number and original order number ready to make an inquiry or claim. If possible, include pictures, a video and description of the problem to help expedite the processing time.

- Call 1-800-215-9293
- Email [sales@centralrestaurant.com](mailto:sales@centralrestaurant.com)