



Commercial Gas Range with Oven

Model	Oven	Burners
IR-4B	1	4

STANDARD FEATURES

Construction

- Stainless steel front, sides, backsplash and over shelf
- Heavy duty steel frame
- Removable, easy to clean 12" x 12" cast iron top grates
- Removable crumb tray
- 6" caster kit included, two with lock, two without
- 3/4" rear NPT gas connection

Oven Features

- 30,000 BTU oven burner
- Cool to touch oven door handle
- Two adjustable oven racks easily removable
- Compression spring door system
- Flame failure safety device
- Nano Porcelain chip resistant oven liner
- Temperature range from 250°F - 550°F

Control

- High performance and efficient cast iron burners each giving off 30,000 BTU/hour
- Individual pilot lights
- Push in knob with efficient Hi-Low burner system
- LPG conversion kit included
- Warranty: 1 year parts and labor



SPECIFICATIONS

The Iron Range Commercial Gas Range has powerful 30,000 BTU cast iron burners. Each burner has an individual pilot light heavy-duty 12" x 12" removable cast iron grate and individual instant light control knob. It is constructed with a stainless steel front, sides, 24.75" high back riser and over shelf, 6" casters, and a 3/4" NPT gas connection. Units are shipped for natural gas but are easily converted to LPG (propane) gas with the LPG conversion kit that is included.

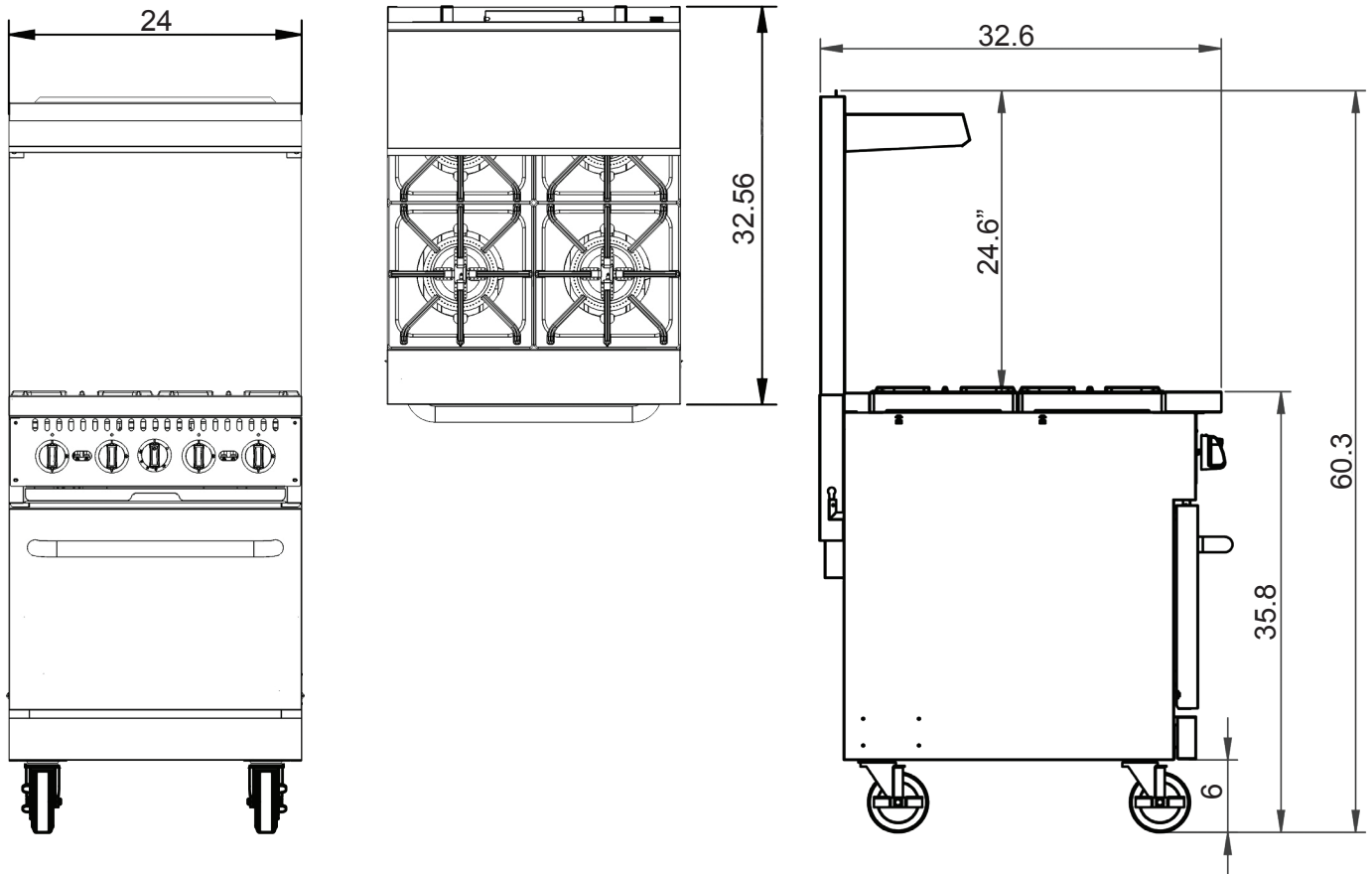
The standard oven is powered with a 30,000 BTU burner and comes with two easy to remove oven racks. It includes a no-chip nano porcelain oven liner for easy cleaning and a compression spring door hinge system for durability. The oven thermostat adjusts from 250°F - 550°F and is equipped with a flame failure safety device.

All ranges carry ETL approval for gas and sanitation that pass USA requirements for use in food service.



IMPORTANT INFORMATION:

- A convertible pressure regulator is provided with this unit.
 Natural Gas 4.0" (102 mm) W.C.
 Propane Gas 10.0" (279 mm) W.C.
- Gas connection is 3/4" NPT (19mm) rear gas connection



Model	Burners	External Dimensions			Internal Oven Dimensions			BTU's per burner	BTU's per oven	Total BTUs	Crated Weight (lbs)
		W	D	H	W	D	H				
IR-4B	4	24	32.56	35.8 + 24.6	20.6	25.8	13.7	30,000	30,000	150,000	356

Specifications are subject to change without notice.

