



Responsive. Reliable.

Project Name/No: \_\_\_\_\_ Item No: \_\_\_\_\_

Quantity: \_\_\_\_\_ SIS#: \_\_\_\_\_ AIA/CSI#: \_\_\_\_\_

## ***Xpress-peditor Countertop Landing Table System*** **Model LT-4-CT**



The versatile *Xpress-peditor LT-4-CT Countertop Landing Table System* provides multi-functional support for any busy food service operation.

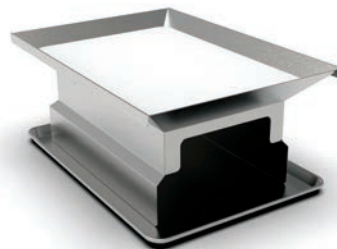
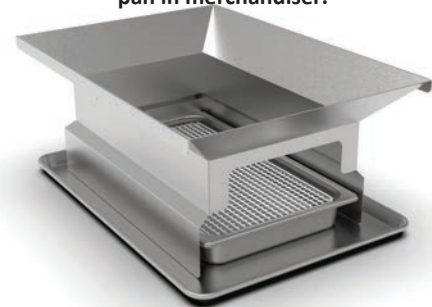
- Countertop Dump Station; sets up easily without tools. 18" x 26" Sheet Pan, Full-size Steam Table Pan and Grate, and 15" x 20" Cutting Board included.
- Easily dump cooked product directly into a serving pan, **reduces spillage and waste**.
- Use as **FIFO rotation control** ... place pan of fresh cooked product beneath the funnel ... pour any remaining unsold product onto top of fresh, then move full pan back to warmer or serving line.
- Place a sheet pan with the cutting board inside top of funnel to create an additional work surface for trimming and prepping.
- Durable stainless steel construction. Clean-up is quick and easy; nothing to disassemble.

### ***Design Features***

**Nest empty steam table pan in funnel ... dump fresh cooked product directly to pan for serving.**



**FIFO rotation ... after dumping fresh product, place pan below funnel ... dump any unsold product on top of fresh before placing pan in merchandiser.**



**Place a sheet pan on top of funnel and use the provided 15x20 Cutting Board as an additional prep station. Drippings and trimming scraps are contained in the pan for quick and easy clean-up.**

**GILES Food Service Equipment** • ISO 9001-2015 Registered

PO Box 210247; 2750 Gunter Park Drive W; Montgomery, AL 36109 USA

334.272.1457 • Fax 334.239.4117 • Toll Free 800.554.4537 (US/Canada Only) • [www.gfse.com](http://www.gfse.com) • Email: [services@gfse.com](mailto:services@gfse.com)

Printed in USA, Form 65598-CT (Rel. Date: Aug.2010; Rev. Date: Feb.2019, Rev. B)

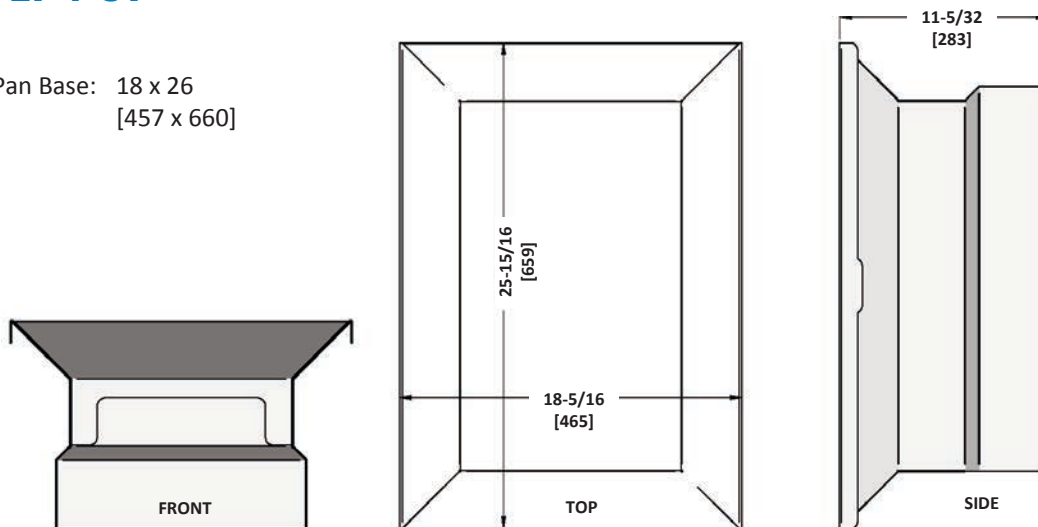
# Xpress-peditor Countertop System

## Model LT-4-CT

Project Name/No: \_\_\_\_\_ Item No: \_\_\_\_\_

Quantity: \_\_\_\_\_ SIS#: \_\_\_\_\_ AIA/CSI#: \_\_\_\_\_

Sheet Pan Base: 18 x 26  
[457 x 660]



Inches [mm]

### Specifications

#### Construction:

16-Ga 430 Stainless Steel

#### Dimensions:

Width: 18-5/16" [465 mm]

Depth: 26" [660 mm]

Height: 11-3/16" [284 mm]

Floor Space consumed: 3.3 sq ft [0.31 sq m]

**Product Designation:** LT-4-CT

#### Shipping Specifications:

Crated Weight: 32 lbs [14.5 kg]

Crated Cube: 26" x 26" x 16" = 6.3 cu ft  
[660 mm x 660 mm x 406 = 0.18 cu m]

### Accessories Included:

(1) 18" x 26" Sheet Pans

((1) 2-1/2" Deep Full Pan

(1) 15" x 20" Cutting Board

1) Full-size Pan Grate

(

### How To Specify

#### 1. Model:

Specify Item Number:

✓	Qty	Model	Item Number
		LT-4-CT Counter-Top System	71577

#### 2. Additional Accessories (purchased separately)

Specify Item Number and Quantity for any of the following as needed:

✓	Qty	Description	Item Number
		Full-size Sheet Pan, 18" x 26"	78602
		Full Pan, 2-1/2"	76024
		Cutting Board, 15" x 20"	41131
		Grate, Full-size Pan	76207

#### 3. Shipping:

Specify preferred shipping method



2750 Gunter Park Drive West • Montgomery, AL 36109 USA  
334.272.1457 • Toll Free: 800.554.4537

Product specifications and/or designs are subject to changes without notice. Such revisions do not entitle the buyer to corresponding changes, improvements, additions or replacements for previously purchased equipment.