

INSTALLATION · OPERATION · MAINTENANCE · PARTS



Rotomal Grill

Model 42-14

Sales Department

Toll Free (USA & Canada only):

1.800.683.0928

Phone: 1.210.734.5124

Fax: 1.210.737.3925

Email: sales@bescomfg.com

Service Department

Phone: 1.210.547.4121

Email: service@bescomfg.com

Parts Department

Phone: 1.210.547.4135

Email: parts@bescomfg.com

Connect with us!

#BESCOMFG



www.bescomfg.com

200 Lombardo St. San Antonio, Texas 78207 USA

Precautions



Model 42-14
36" Round Rotomal Gas Grill



DISCONNECT ELECTRICAL POWER PRIOR TO MAINTENANCE AND CLEANING.



ALL MAINTENANCE AND CLEANING MUST BE PERFORMED ACCORDING TO THIS MANUAL.



NEVER USE ANY SHARP OBJECTS, CAUSTIC OVEN CLEANER, OR DEGREASER TO CLEAN MACHINE.



IN CASE OF POWER FAILURE, TURN OFF GAS AND SHUT DOWN MACHINE.



IN CASE OF GAS LEAK, TURN OFF GAS AND SHUT DOWN MACHINE. CONTACT YOUR GAS SUPPLIER OR LOCAL FIRE DEPARTMENT.



TO POWER DOWN, DEPRESS MASTER SWITCH FULLY AND ENSURE THAT THE PILOT LIGHT DOES NOT ATTEMPT TO RE-LIGHT.



FOR EMERGENCY SHUT DOWN, PUSH MASTER SWITCH.



DO NOT CONNECT TO A CIRCUIT OPERATING AT MORE THAN 150 VOLTS TO GROUND.

Policy & Procedure for Returning BE&SCO Parts

Returning BE&SCO Parts:

To return any BE&SCO parts you must follow BE&SCO's procedure for returning. No returns will be accepted outside of this procedure. BE&SCO warrants parts for 1 year or 3000 hours, which ever comes first, for full credit. This does not include wear and tear items **as stated in our manual.**

This warranty does not cover any defect due to or resulting from handling, abuse, misuse, improper maintenance and cleaning, or harsh chemical action, nor shall it extend to any unit from which the serial number has been removed or altered, or acts of God. Adjustments such as calibrations, leveling, tightening of fasteners or plumbing connections normally associated with original installation are the responsibility of the dealer or installer and not of BAKERY EQUIPMENT & SERVICE CO., INC.

Procedure for Returning BE&SCO Parts:

1. Call BE&SCO Parts Department at 1-800-683-0928 or email parts@bescomfg.com. At this time you may request a repair and return, advance replacement, or a credit of the component. The Parts Department will then issue you an RA (Return Authorization) number to return the BE&SCO part. After you are issued an RA number. You have 10 working days to return the old part for full credit or you will be invoiced for the new part.
2. Package the component and a detailed description of what is wrong with the component. Write the RA number on the outside of the package in a visible place and send the return to:

BE&SCO - Parts Department
RA#
200 Lombrano Street
San Antonio, TX 78207

To obtain warranty on return parts the customer or the end user will be responsible for that particular item to be shipped back to BE&SCO. Freight is not covered under warranty, going or coming. BE&SCO recommends that you insure any parts that are being returned to BE&SCO, as BE&SCO Inc. is not responsible for any damage or loss that occurs during shipping. If the part is damaged or lost during shipping, BE&SCO will not be responsible for repair or replacement of the parts.

Table of Contents

Precautions.....	1
Policy & Procedure for Returning BE&SCO Parts.....	2
Table of Contents.....	3
Warnings.....	4
Delivery & Damage.....	4
Installation	4
Specifications	5
Control Panel.....	6
Under 36" Teflon Round Plate	7
Operation.....	9
Cleaning	10
Maintenance.....	13
Closing Statement	16
Parts and Pictures Warning.....	17
Parts and Pictures	18
Warranty.....	29

Neither this manual nor any part may be reproduced or transmitted in any form or by any means, electronic or mechanical, including photocopying microfilming and recording, or by information storage and retrieval system, without permission in writing from Bakery Equipment & Service Co., Inc.

Warnings



IN CASE OF POWER FAILURE, SHUT DOWN MACHINE.



**IN CASE OF GAS LEAK, TURN OFF GAS AND SHUT DOWN THE MACHINE.
CONTACT YOUR GAS SUPPLIER OR LOCAL FIRE DEPARTMENT IF NEED BE.**



FOR EMERGENCY SHUTDOWN, PRESS MASTER SWITCH OFF.

Delivery & Damage

We pack all our equipment and strap them tightly on heavy wooden skids before giving them to the shipping company. After we give the machine to the shipping company, they are responsible for delivering your machine; therefore, BE&SCO will not be responsible for the loss or damage of your shipment. ***If you find your shipping box or machine damaged, contact the shipping company.***

Installation

The Rotomal can operate on 120 or 240 single phase AC Power. The voltage and phase of the Rotomal must match with the right power supply to safely operate. Any installation not matching the electrical specifications for the machine, or following local, state, and national codes that handle the electrical or gas set up of your Rotomal will not only void your warranty, but will damage your machine.

Additionally, if you choose to use an exhaust hood with the Rotomal check on local, state, and national codes for any rules about using them.

36" Rotomal Specifications

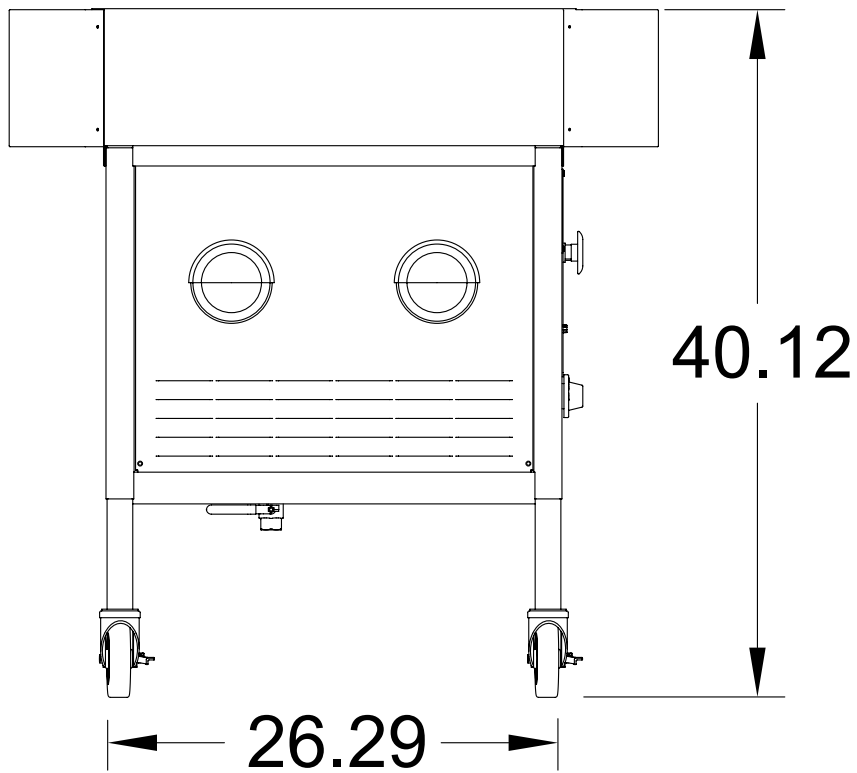
Electrical

Voltage	120
A.C.	50/60 Hz
Phase	1
Amperage	5

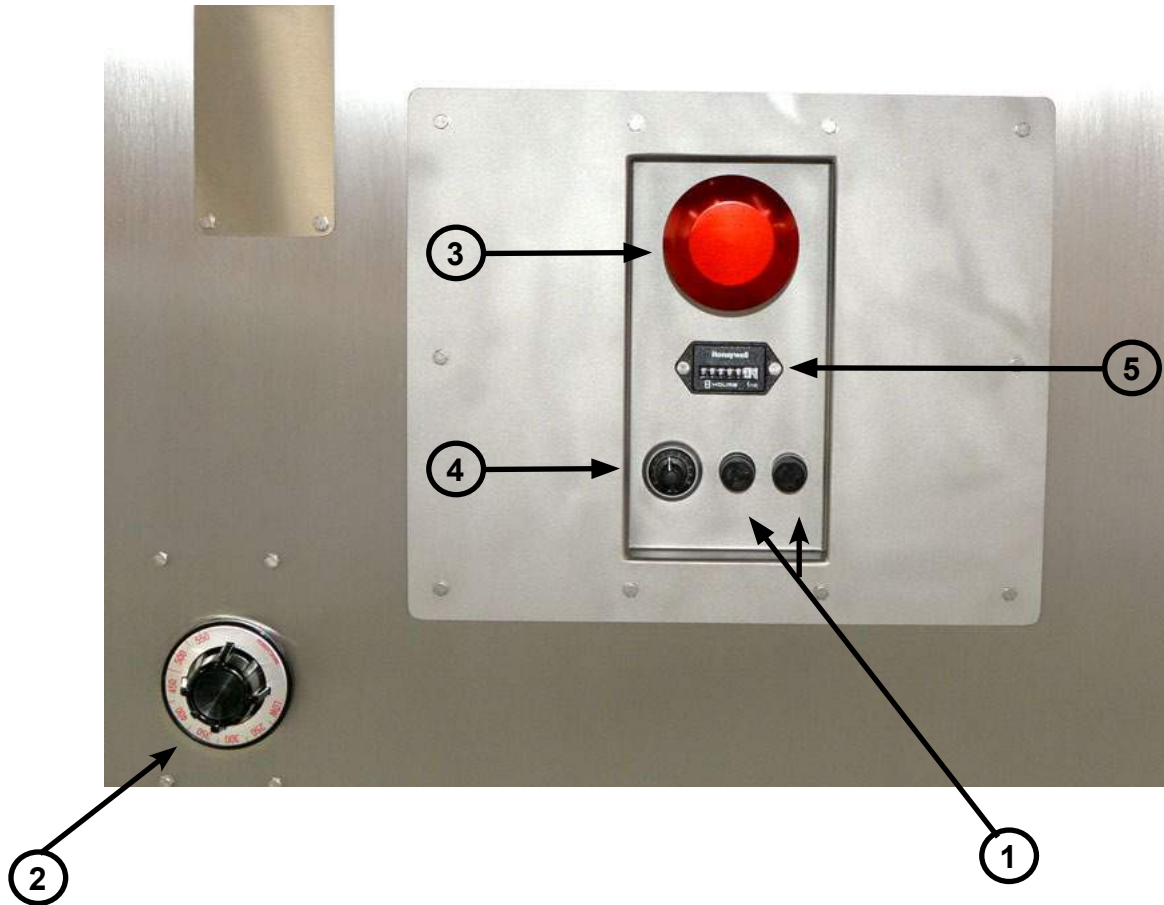
Voltage	240
A.C.	50/60 Hz
Phase	1
Amperage	5

Gas

Heating Value	29,600 BTU/hr
Gas Supply Pressure	3.5" W.C.



Control Panel



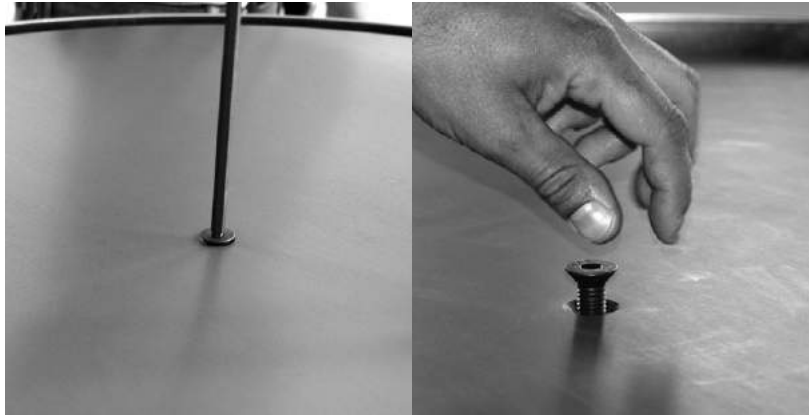
1. **CIRCUIT PROTECTION FUSES** protect electronics from damage caused by high amperage.
2. **TEMPERATURE DIAL** controls temperature of Grill. Turn left to raise temperature, turn dial right to lower temperature.
3. **MASTER SWITCH** turns power ON & OFF. Pull to start, push to stop.
4. **SPEED DIAL** controls the speed of the plate rotation.
5. **HOUR METER** records total hours unit is in operation.

Under 36" Teflon Round Plate

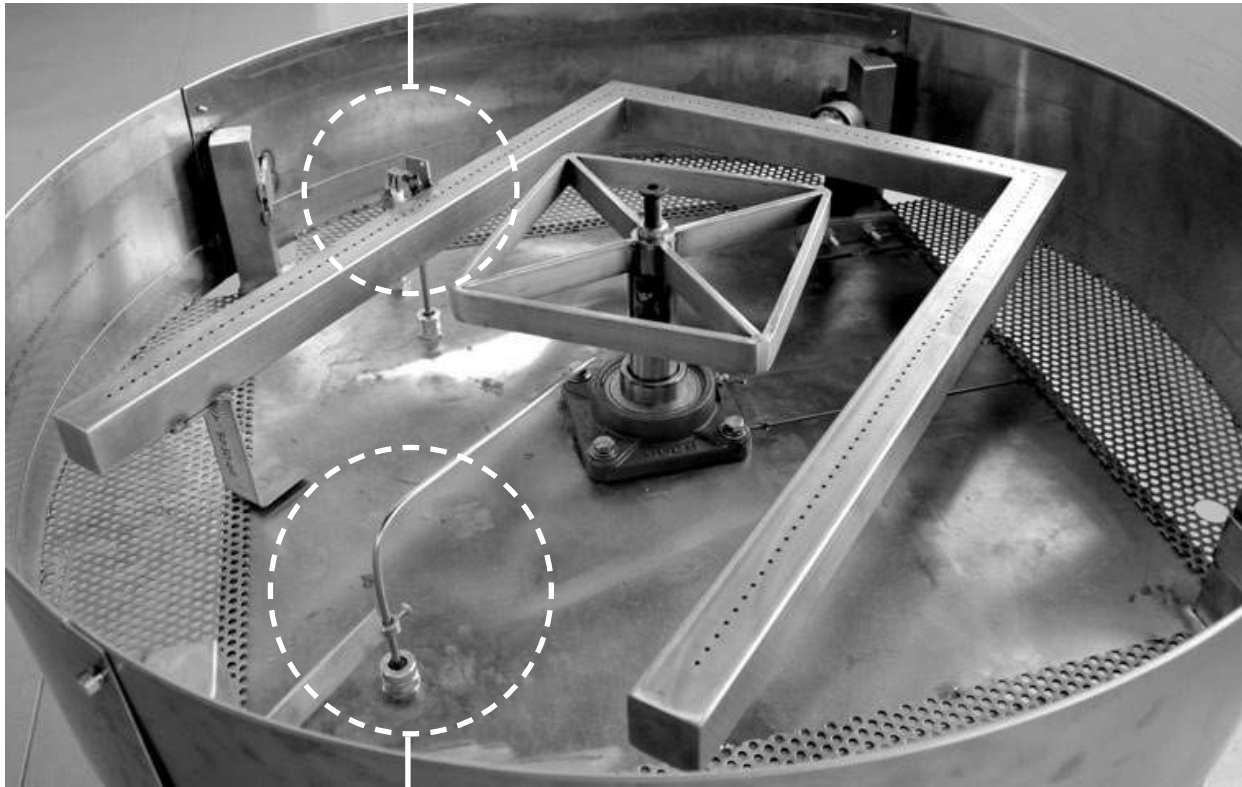
Unscrew the bolt to remove and access underneath the Teflon Round Plate.

A Hex Key is required to remove the bolt.

CAUTION! The Plate is heavy.



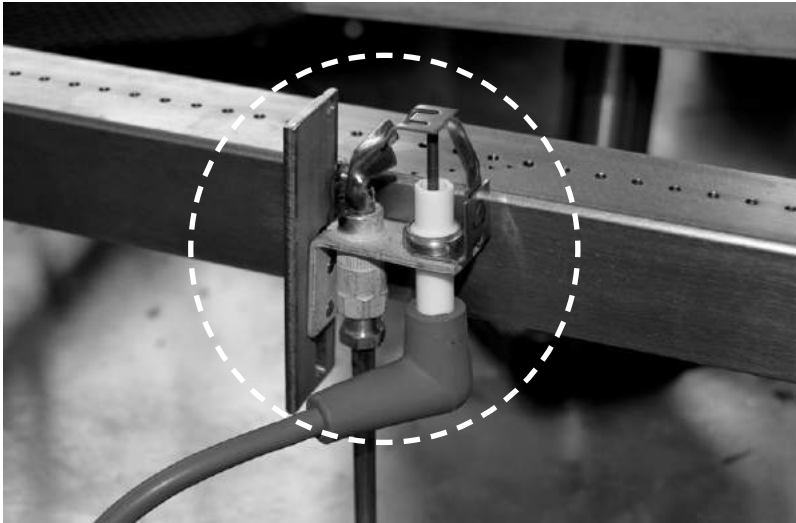
Ignitor and Pilot



Temperature Probe

Under 36" Teflon Round Plate

Ignitor and Pilot



Temperature Probe

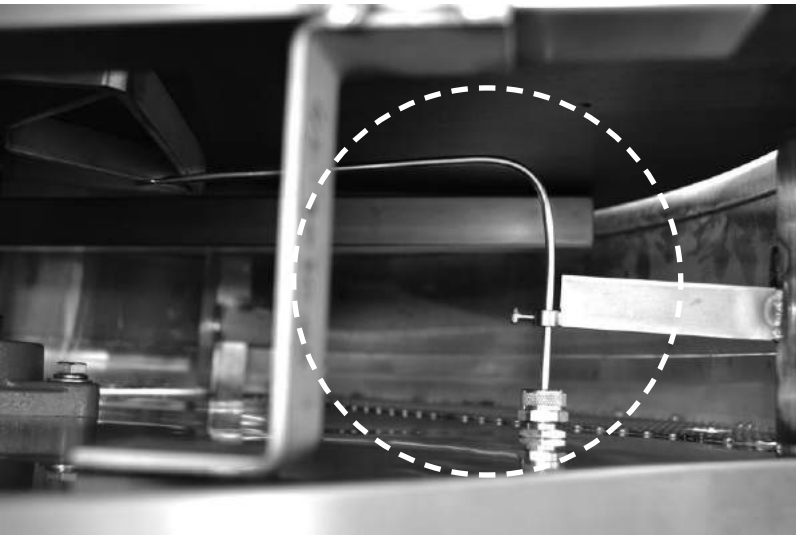
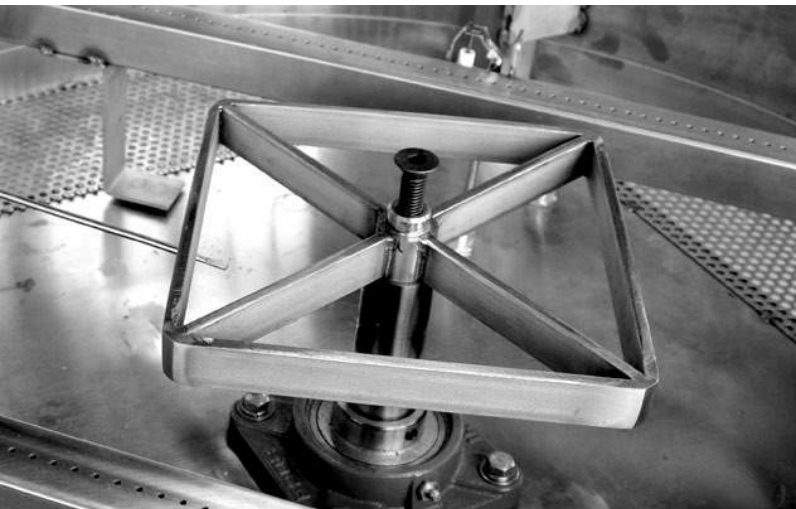
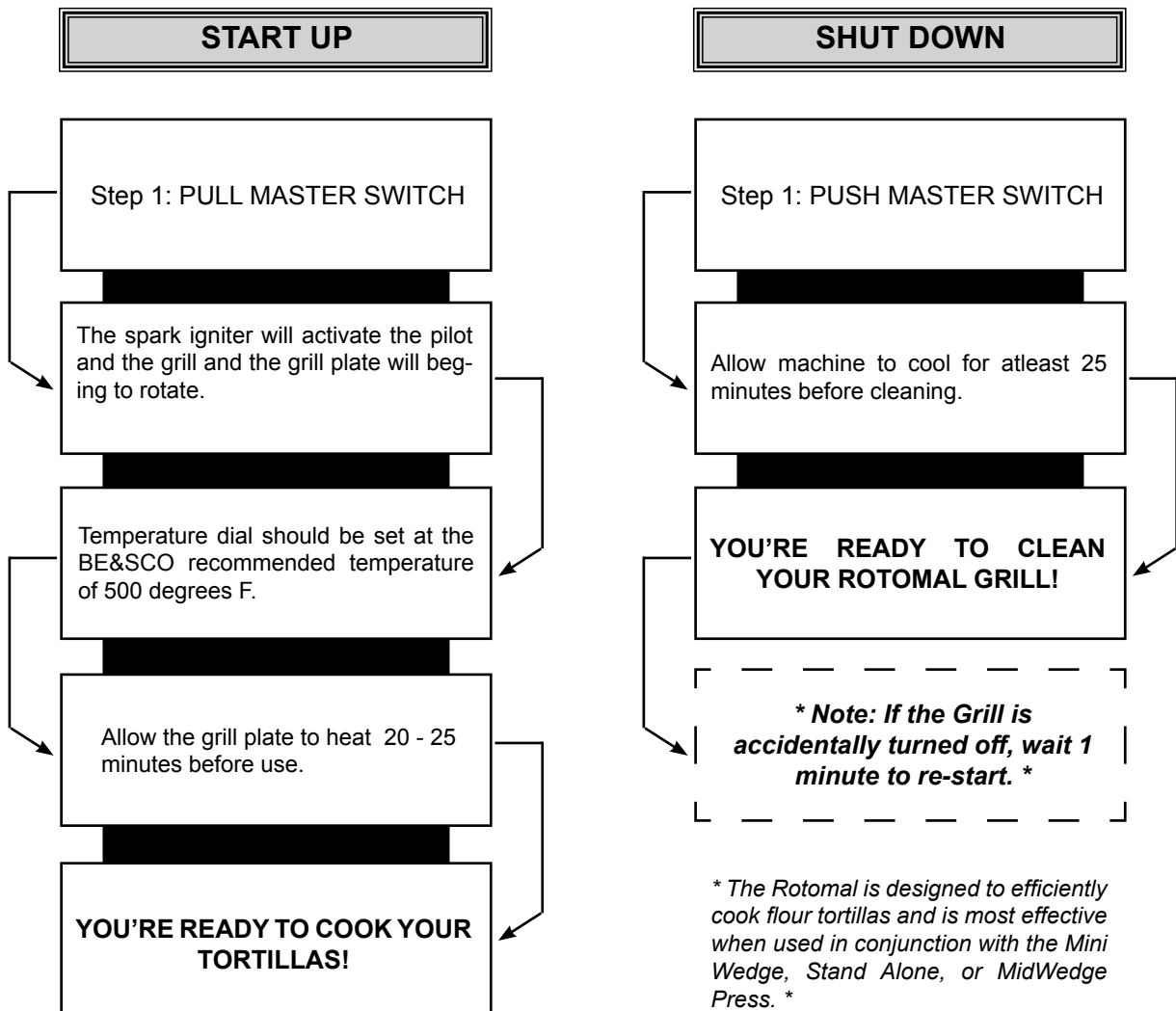


Plate Support



Operation

Note: Before operation, make sure that the Rotomal is properly installed, leveled and casters are set in the lock position.



Cleaning

Materials:

- Damp Cloth • Food Grade Slick'em

*If you do not have these materials call BE&SCO's Part Department @ 210 734 5124.
Part Numbers for these Cleaning Items are on the next page.*

Introduction:

Each Rotomal needs regular, gentle cleaning. The grill plate should always be cleaned before and after every use. By cleaning gently, the plate won't be scratched or marred. During tortilla cooking, clean the plate every 2 to 3 hours. Tortillas will cook evenly and won't stick to the plate if you follow the instructions below.

Precautions:

- *Wear Oven Mitt.*
- *Do not clean press plates with any brand name cleaners, degreasers, and/or sharp objects, such as:*



Cleaning

Order these materials as needed through the BE&SCO's Parts Department @ 210-734-5124.

Item	Part No.	Description	QTY
1	911522101	Food Grade Slick'em Gallon	1
1	911522100	Food Grade Slick'em Qt.	1
2	N/A	DampCloth	1
3	949952010	Oven Mitt	1
4	949952001	#72 Small Green Cleaning Pad	1
5	911512016	Stainless Steel Cleaner & Polish	1



PLEASE USE THESE CLEANING ITEMS ABOVE. THEY ARE APPROVED ITEMS. OTHERWISE USING OTHER CLEANING PRODUCTS THAT ARE NOT IN THIS PICTURE WILL STOP THE WARRANTY.

Cleaning

- ① Wipe surface clean with a damp cloth.



* Use the green scrub pad to remove stuck on debris.

- ② Spray Slick-Em on the cloth and wipe plate surface. You are ready to use the Rotomax.



Maintenance

Materials:

- Grease Gun
- #911211003 Grease

Introduction:

Greasing and replacing Rotomal parts is easy. Grease keeps the parts moving smoothly and they wear slowly. When parts wear down, they need to be replaced in order for the machine to operate in top condition or at all. Ignoring maintenance like greasing or part replacement will damage your machine and even void your warranty. This section will tell you how to care for the Rotomal.

Precautions:

- Unplug electrical power before any repair.
- Allow cool down for 30 minutes before repairing.

Part Replacement:

For Parts replacement, contact BE&SCO's Parts department for Assistance/Guidance.

Maintenance

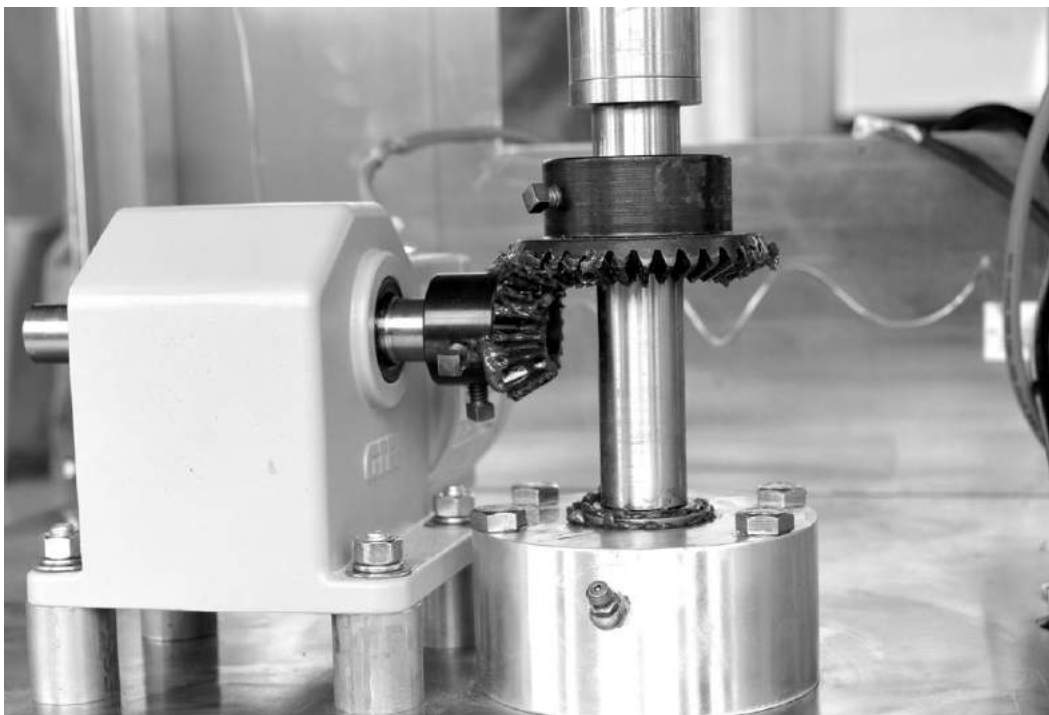
① Unscrew panels at lower corners.



② Lift and pull to remove panel.



③ Grease Bevel Tooth Gear and grease the Motor Shift Gear through zerk fitting once every two weeks.



Maintenance

If any other repair is needed it should be done only by a Qualified Service Person. Repair done by anyone else could easily damage the machine, cause injury, or void the warranty.

A **Qualified Service Person** is an employee of a firm, a company, or corporation that will

1. Install, connect, repair, service, and replace mechanical and/or electrical parts of the Rotomals.
2. Follow all rules and regulations of the *National Fuel Gas Code, NFPA 54-1984 and ANSI z223.1-1984, National Electrical Code ANSI/NFPA 70 Section 1.4*, Canada's "Installation Codes for Gas Burning Appliances and Equipment" CAN-I-B149.1 and B149.2, or any codes local to you.

If you want some help finding a Qualified Service Person, please contact your dealer or BE&SCO Service Department @ 210 734 5124.

Closing Statement

In this manual we have covered a lot of information. You should now know how to care, operate and repair the machine. If anyone else operates this machine, we suggest they read through the whole manual as well.

The following pages show schematics and list replacement parts to help you service your machine. When you order parts, please know the machine model, the machine serial number, and the BESCO part number. If no part number is available, know the part numbers of items from the area you need to order the part.

Thank you and happy tortilla cooking!



BE&SCO Manufacturing
200 Lombrano Street • San Antonio, Texas 78207 USA
Toll Free: 1-800-683-0928 • Office (210) 734-5124 • Fax (210) 737-3925
Sales Department Email: sales@bescomfg.com
Service Department Email: service@bescomfg.com
Parts Department Email: parts@bescomfg.com
Website: www.bescomfg.com

Parts & Pictures Warning



Disconnect power before any repair.

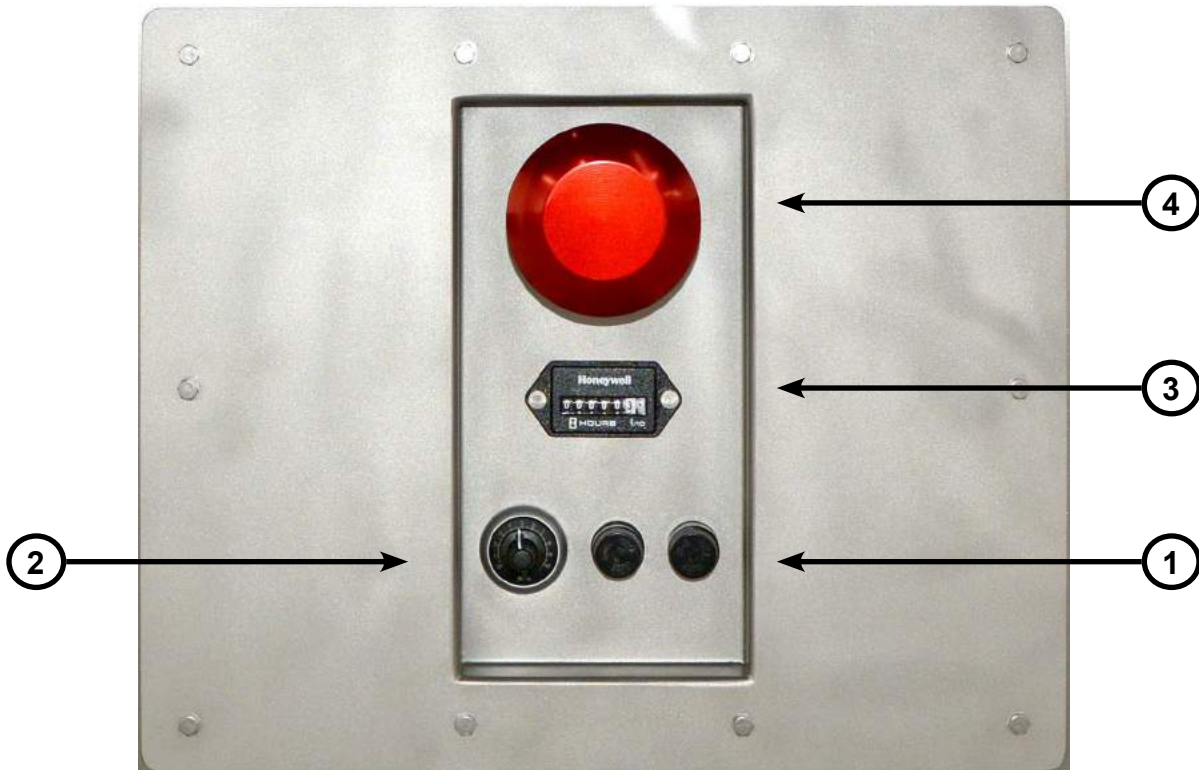


Install BESCO parts only.



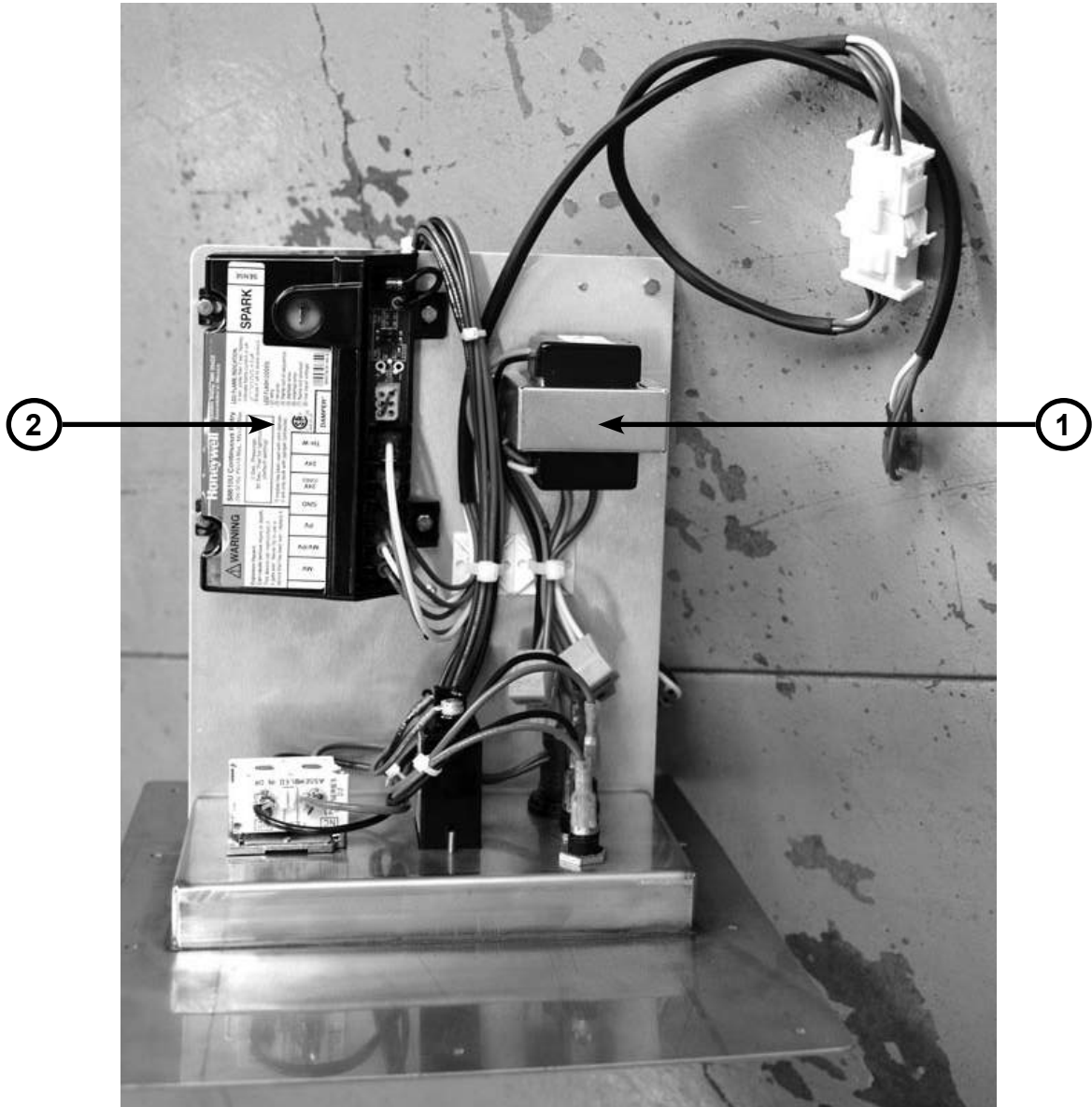
When ordering parts know: machine model, machine serial number, and BESCO part number (if no part number, know the parts and numbers close-by the needed part).

Control Panel



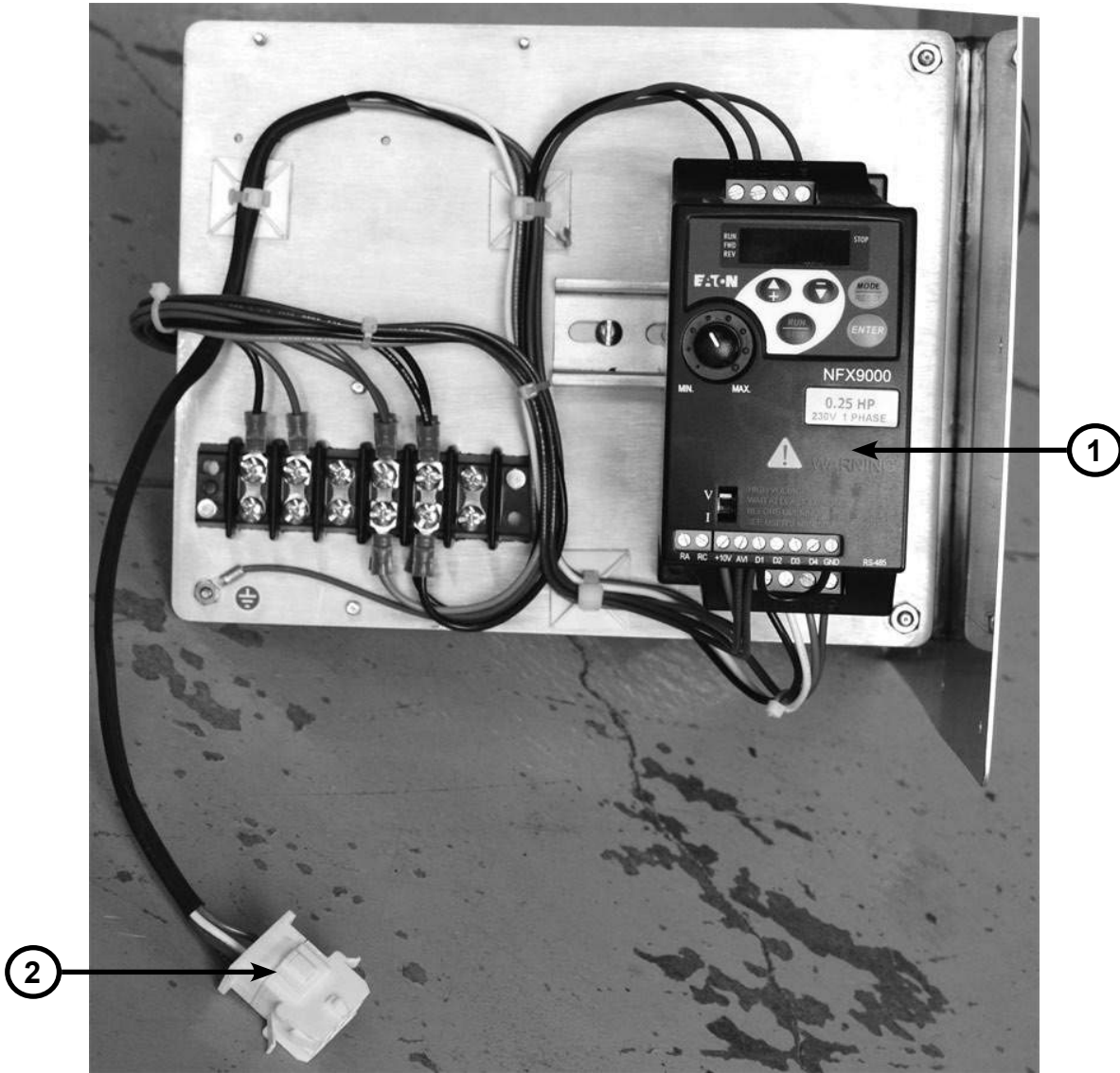
Item	Part No.	Description	QTY
1	361300099	Fuse, 3 Amp Glass	2
1	361121107	Fuse Holder, Panel	2
2	392300138	Potentiometer Rotary Assy	1
3	381411129	Hour Meter - 120V	1
3	381411132	Hour Meter - 240V	1
4	312300024	Switch Push/Pull	1

Inner Component Panel



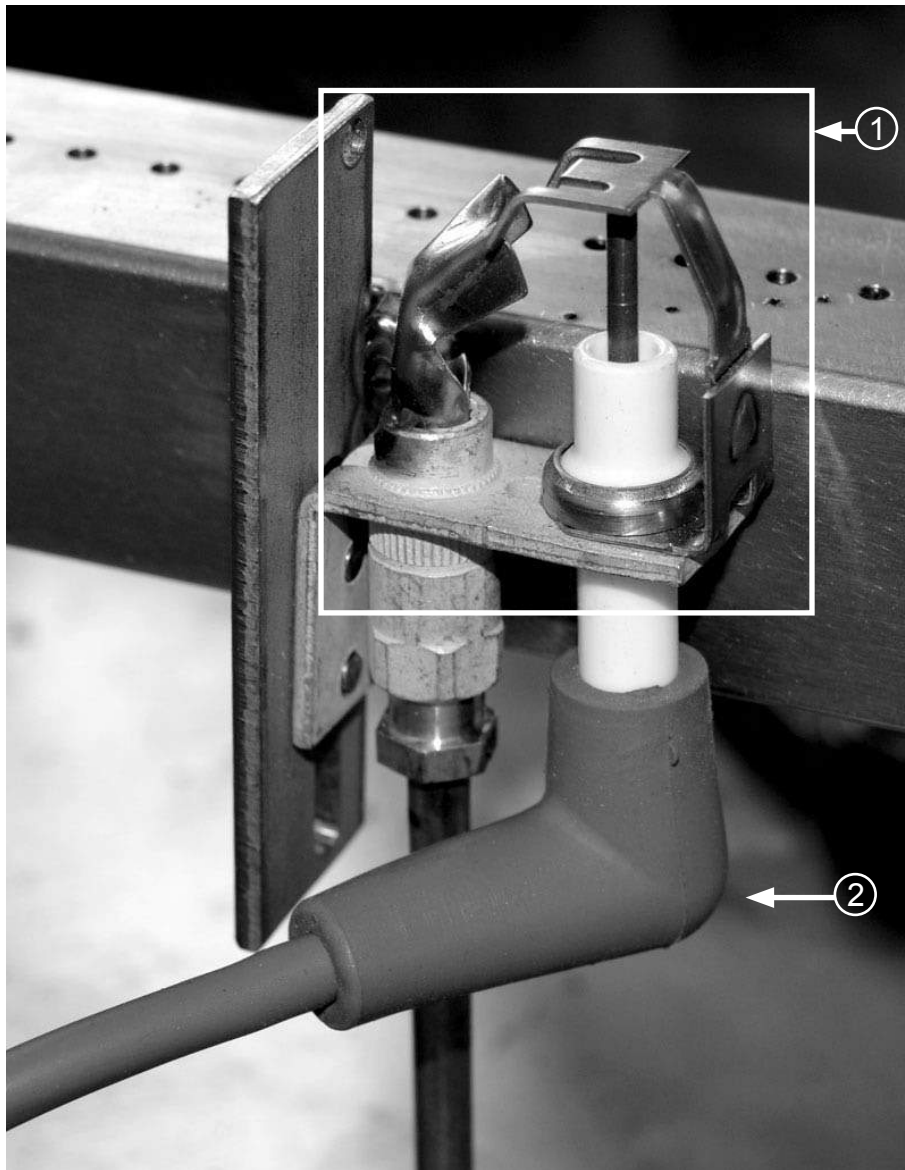
Item	Part No.	Description	QTY
1	371013003	Transformer 120-24 VAC	1
1	371014005	Transformer 240-24 VAC	1
2	411715003	Control, Ignition Module	1

Inner Component Panel



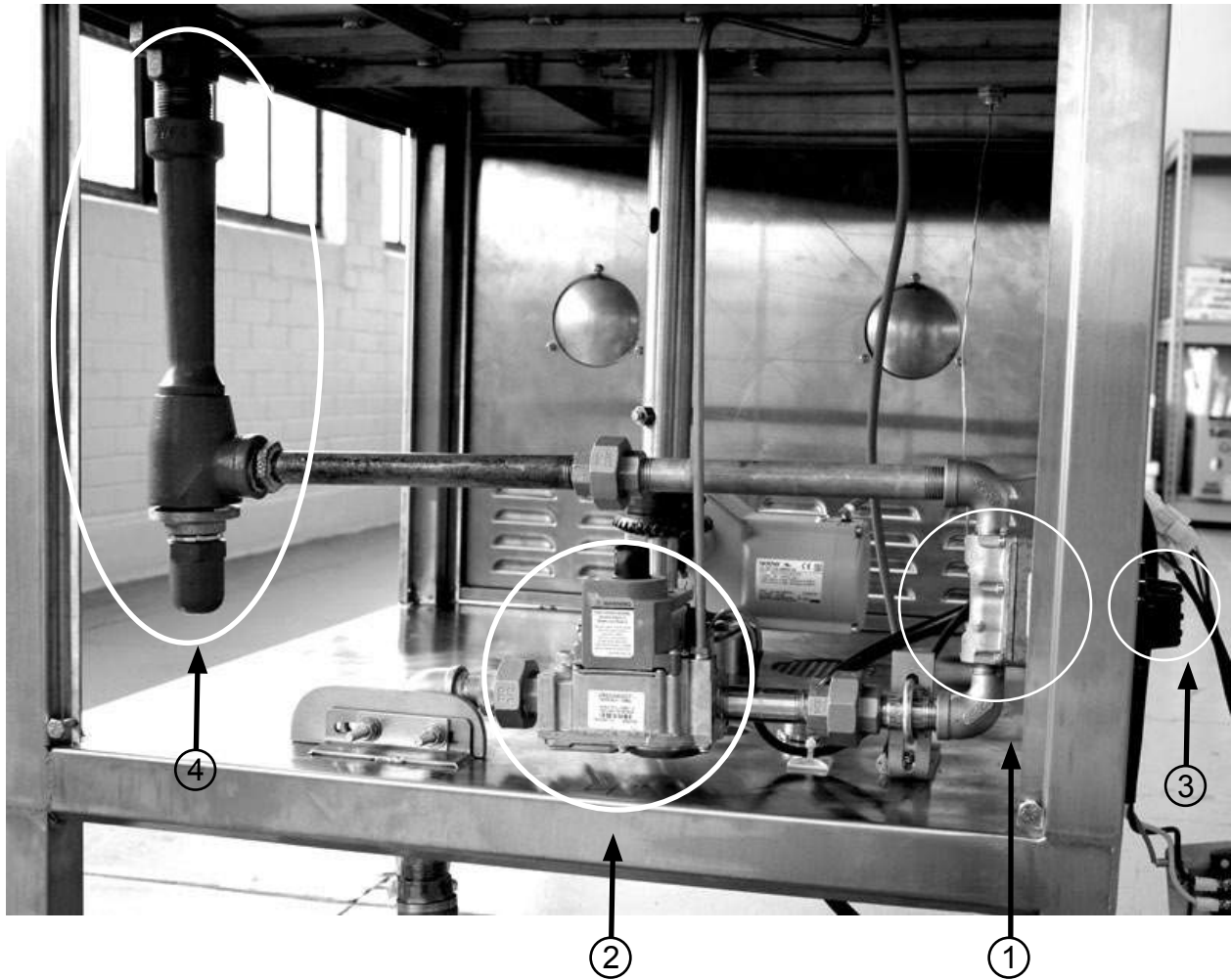
Item	Part No.	Description	QTY
1	01-0104-00	VFD Driver 120V	1
1	01-0107-00	VFD Driver 240V	1
2	42-8930-00	Wiring Harness	1

Gas Igniter



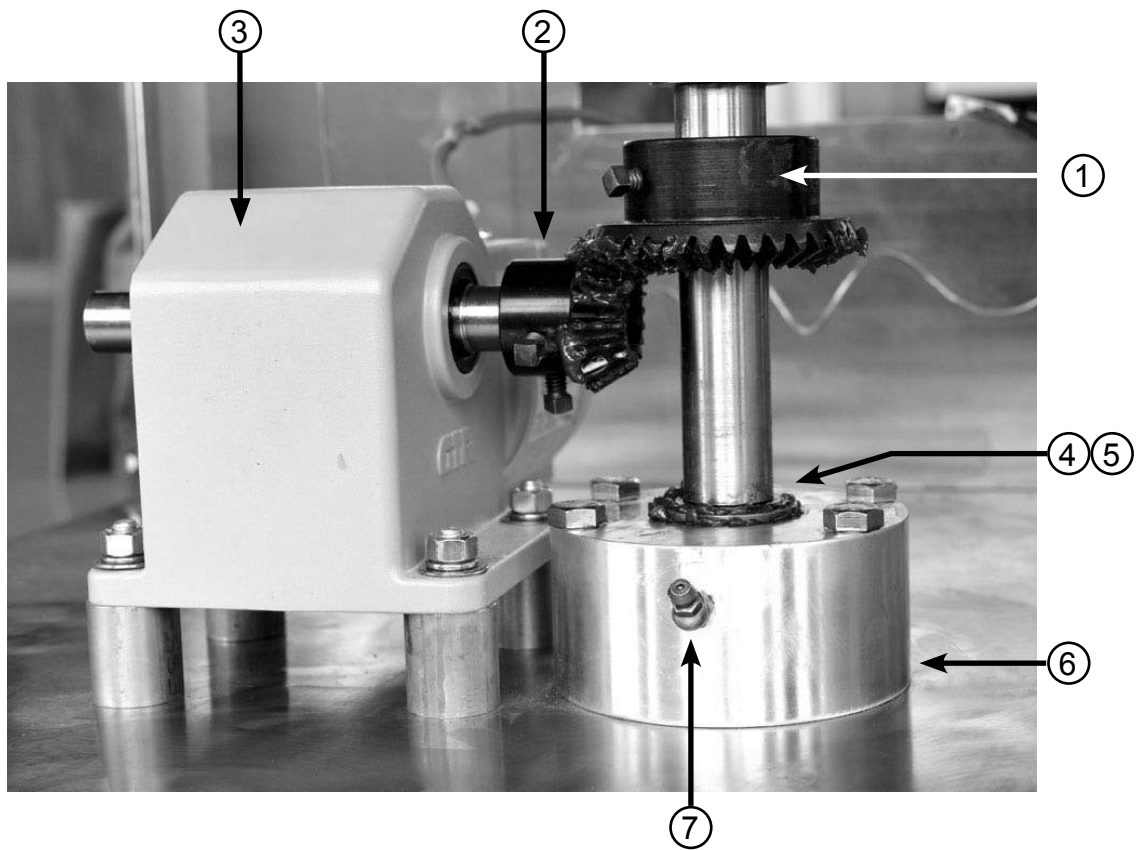
Item	Part No.	Description	QTY
1	411012035	Burner, Gas Pilot	1
2	C-11-016	Ignitor Harness Cable Assy	1

Gas Piping Layout



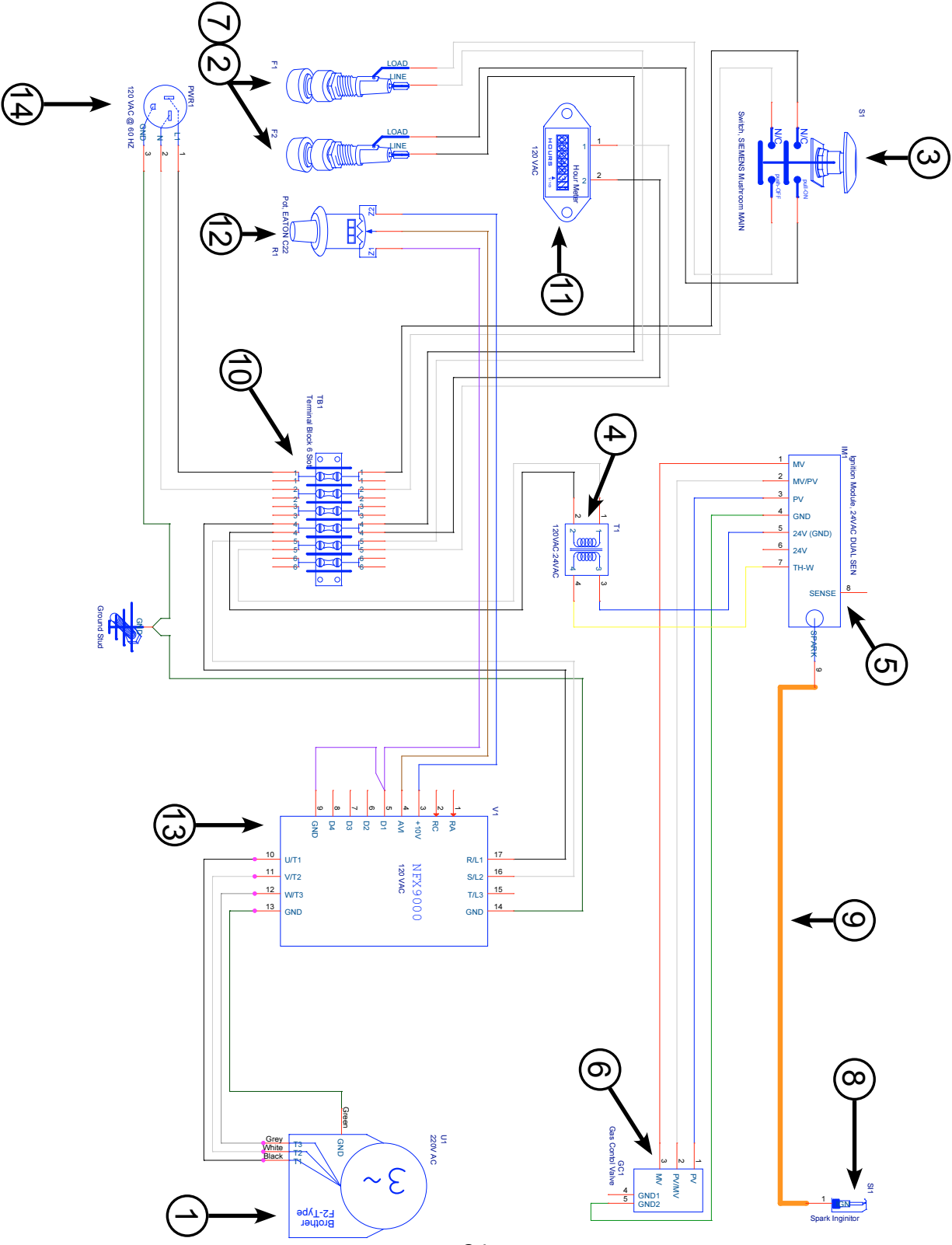
Item	Part No.	Description	QTY
1	411714001	Valve, 1/2 Thermostat	1
2	411713005	Valve, 3/4 Gas Control	1
3	611113002	Knob, Low 150/550 Thermostat	1
4	411211026	TR-4 Injector	1

Motor



Item	Part No.	Description	QTY
1	42-7010-17	36T Bevel Gear	1
2	42-7010-15	18T Pinion Gear	1
3	01-5000-00	Motor, 3 Phase	1
4	531817048	Bearing	1
5	531817049	Bearing Cup	1
6	B-15-010	Bearing Holder	1
7	922414016	Grease Zerk	1

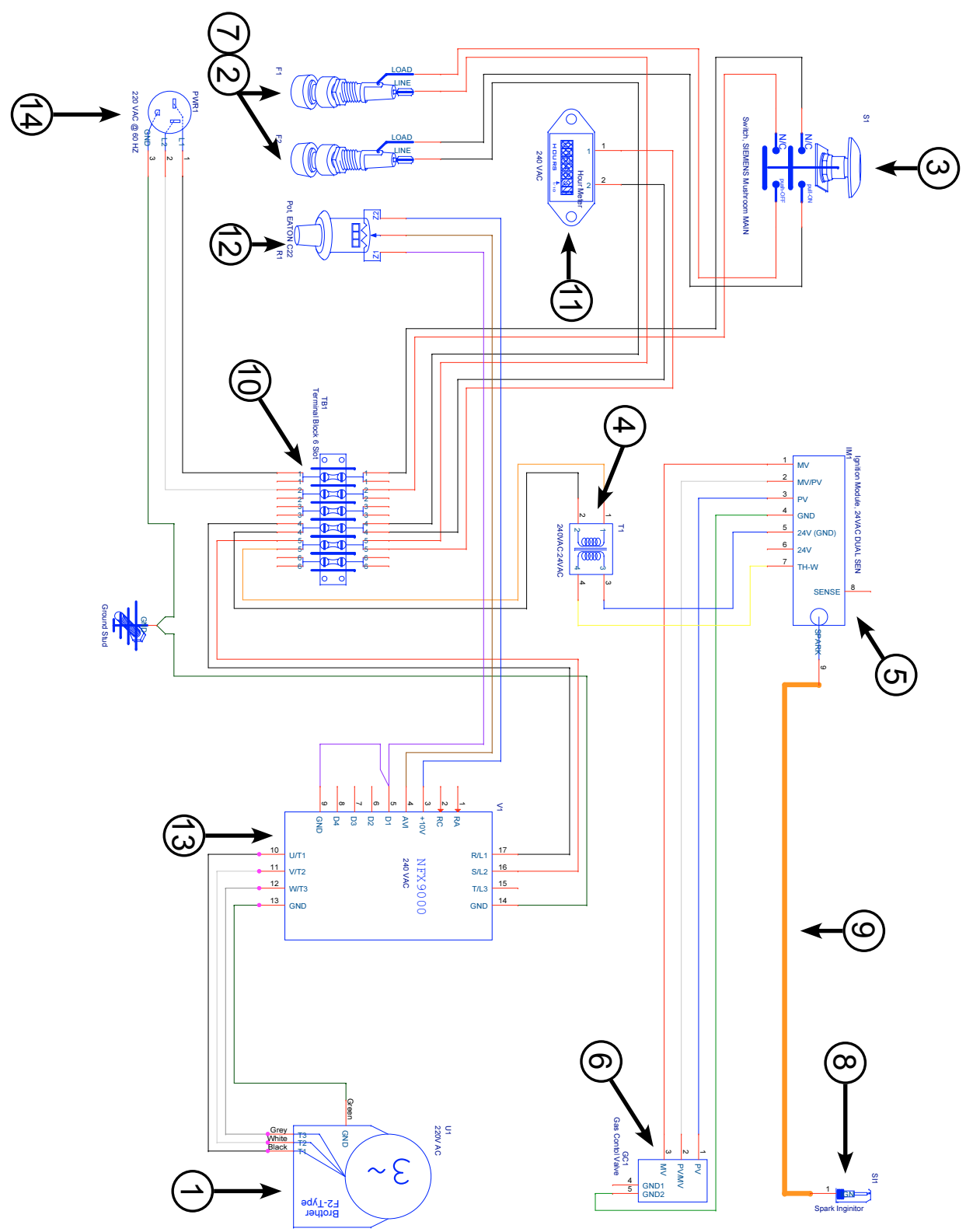
Electrical Schematic (120v)



Electrical Parts List - 120V

Item	Part No.	Description	QTY
1	01-5000-00	MOTOR, 3PH 1/15HP WITH PLUG	1
2	361121107	FUSE HOLDER, PANEL	1
3	312300024	SWITCH, E-STOP PUSH/PULL MAINTANED W/ CONTACT BLOCKS	1
4	371013003	TRANSFORMER, 120/24V	1
5	411715003	IGNITION MODULE DUAL SENSE (NEW STYLE)	1
6	411713005	VALVE, 3/4" GAS CONTROL	1
7	361300099	3 AMP GLASS FUSE	1
8	411012035	BURNER, GAS PILOT	1
9	C-11-016	IGNITOR HARNESS CABLE ASSY.	1
10	352700119	TERMINAL, 6 LUG 8-32 SCREW	1
11	381411129	HOURMETER, 120V 60Hz	1
12	392300138	POTENTIOMETER, ROTARY ASSEBLY	1
13	01-0104-00	CONTROLLER, MOTOR DRIVE 120V OVEN	1
14	351611010	POWER CORD, 120V 12/3 NEMA 5-20P MOLDED	1
14	351611010	POWER CORD, 120V 12/3 NEMA 5-20P MOLDED	1

Electrical Schematic (240v)



Electrical Parts List - 240V

Item	Part No.	Description	QTY
1	01-5000-00	MOTOR, 3PH 1/15HP WITH PLUG	1
2	361121107	FUSE HOLDER, PANEL	1
3	312300024	SWITCH, E-STOP PUSH/PULL MAINTANED W/ CONTACT BLOCKS	1
4	371014005	TRANSFORMER, 240/24V	1
5	411715003	IGNITION MODULE DUAL SENSE (NEW STYLE)	1
6	411713005	VALVE, 3/4" GAS CONTROL	1
7	361300099	3 AMP GLASS FUSE	1
8	411012035	BURNER, GAS PILOT	1
9	C-11-016	IGNITOR HARNESS CABLE ASSY.	1
10	352700119	TERMINAL, 6 LUG 8-32 SCREW	1
11	381411132	HOURMETER, 230V 60Hz	1
12	392300138	POTENTIOMETER, ROTARY ASSEBLY	1
13	01-0107-00	CONTROLLER, MOTOR DRIVE 240V OVEN	1
14	351611020	POWER CORD, 240V 12/3 NEMA 6-20P MOLDED	1

Original Equipment Warranty

BAKERY EQUIPMENT & SERVICE CO., INC. warrants that its products, as supplied to the original user, is free from defects in material and workmanship, and is suitable for the use for which it is sold. The Company's obligation under this warranty shall be limited to replacing, or at the option of BAKERY EQUIPMENT & SERVICE CO., INC. repairing, without charge any part found to be defective and expense incurred (labor and material) for its installation for a period of ninety (90) days or 750 hours of operation, whichever occurs first, from date of shipment from the factory, or upon special written request to the factory and acknowledged by the factory from the date of installation when there is a long installation delay. After said ninety (90) days or 750 hours of operation and for (1) year or 3,000 hours of operation, whichever comes first from warranty initiation date, this warranty shall apply to defective parts replacement at no charge to original user.

This warranty does not cover any defect due to or resulting from handling, abuse, misuse, improper maintenance and cleaning, or harsh chemical action, nor shall it extend to any unit from which the serial number has been removed or altered, or acts of God. BE&SCO equipment is solely intended for use in a commercial facility. The warranty will not be supported and may be voided if BE&SCO equipment is used in a non-commercial or household setting. Adjustments such as calibrations, leveling, tightening of fasteners or plumbing connections normally associated with original installation are the responsibility of the dealer or installer and not of BAKERY EQUIPMENT & SERVICE CO., INC.

BAKERY EQUIPMENT & SERVICE CO., INC. shall not be liable, directly or indirectly, under any circumstances for consequential or incidental damages, including, but not limited to: (i) any loss of business or profits; and (ii) labor, material or other charges, claims, losses or damages incurred or suffered from, in connection with or in consequences of the working upon, alteration, or repair of any such defective products or parts by persons or firms other than BAKERY EQUIPMENT & SERVICE CO., INC.

This warranty applies only to products shipped to and used with the Continental United States and Canada. All other customers will be provided a spare parts kit in lieu of the above warranty. These kits will be provided with delivery of your purchased equipment. The kit shall consist of parts identified, at the sole discretion of Bakery Equipment & Service Co., INC.

At Bakery Equipment & Service Co., INC., we continuously strive to provide the highest quality products and services. This warranty serves to exhibit our commitment to this endeavor.



**Telephone (210) 734-5124 or (800)-683-0928
200 Lombrano Street, San Antonio, Texas 78207 USA**

www.bescomfg.com