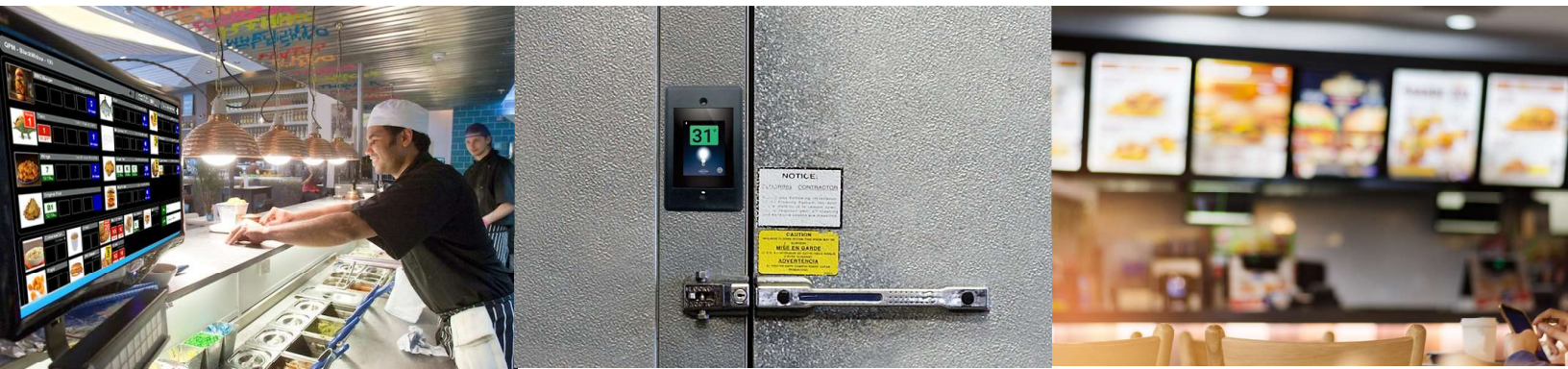


Modularm® Environment Monitoring



Modularm® Temperature Monitoring System (TMS)

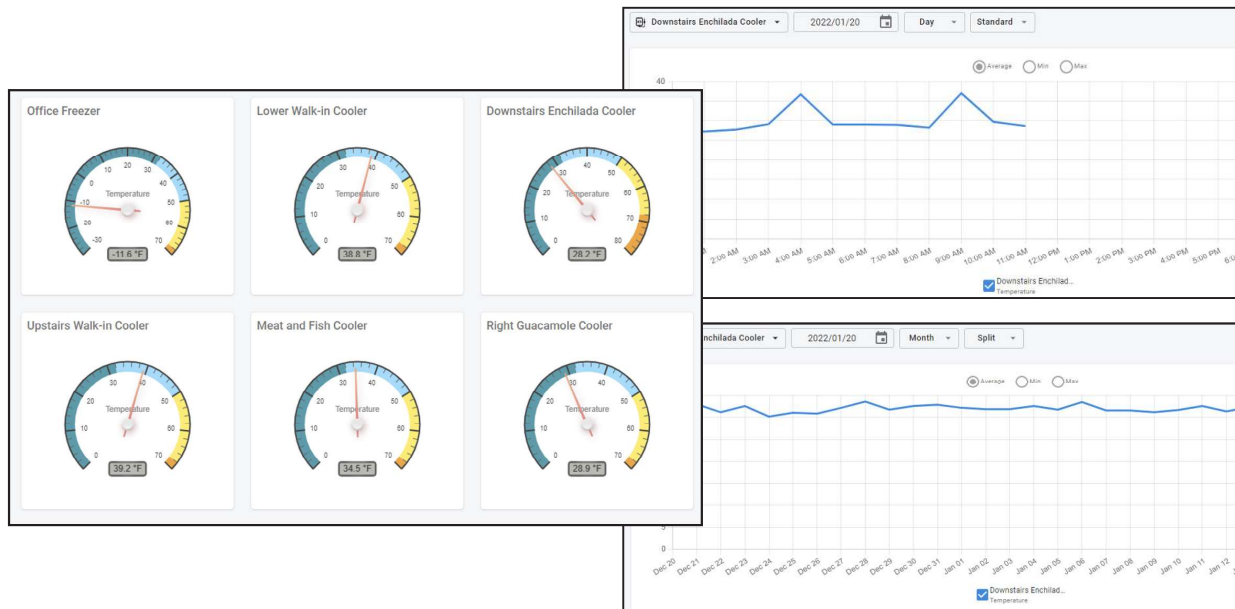
Modularm TMS enables single and multi-unit location managers to remotely monitor temperature and humidity in critical spaces, including coolers, freezers and food storage areas. When a sensor detects an out-of-range reading, an alert is sent via text or email 24/7/365 to registered recipients, who can take immediate action to mitigate the risks associated with food spoilage.



TMS Gateway

TMS Sensors

Modularm TMS consists of a gateway and a series of IoT sensors that can be placed anywhere monitoring is required. The system uses LoRaWAN networking, which provides long-range connectivity and extended sensor battery life. Relevant data is delivered via the cloud to the Modularm TMS dashboard, which is accessible on a cell phone, handheld device or personal computer, as shown below.



TMS Sensor Stats:

- Battery operated (replacement needed in about one-year, depending on location)
- Easily installs on a wall (guidelines are provided to position relative to Gateway)
- Multiple Sensors can be connected to one Gateway and placed throughout the store
- Dimensions are 116 mm x 91 mm x 34 mm or 4.57 in x 3.58 in x 1.34 in

TMS Gateway Stats:

- 12V/1A power adapter external DC power supply with regional plug adapter
- Ethernet interface to connect to a switch/access point inside the store (Cellular Option Available)
- Sends/receives messages to/from a cloud-based LORA server, which passes information to a database in the cloud that interfaces with the TMS app
- One gateway required per store
- Dimensions are 133 mm x 275 mm x 30 mm or 5.24 in x 10.83 in x 1.18 in

TMS In-Store and Above Store Capabilities

