



**Crysalli**  
Beverage Systems



**Collection**  
What inspires you?



# ***New Glass Filling Station with Built-in Water Filter!***

*see page 12 for details*

## *Table of Contents*

 <b>Artisan Water</b>	<b>3</b>
<i>Sizing Guide</i>	4
<i>Specifying Guide</i>	5
<i>Towers</i>	6
<i>Drain Pans</i>	8
<i>Remote Chillers</i>	9
<i>Countertop Systems</i>	10
<i>Glass Filling Stations &amp; Drop-Ins</i>	12
<i>Low Volume Systems</i>	13
<i>Instant Hot Water System</i>	14
<i>Filtration &amp; Accessories</i>	15
 <b>Nitro Cold Brew</b>	<b>17</b>
<i>ProFusion Flex Systems &amp; Install Kits</i>	18
<i>Accessories</i>	19
 <b>Helpful Resources</b>	<b>21</b>
<i>Installation Kit Breakdowns</i>	21
<i>Company Information</i>	23



## **Artisan Water**

<i>Sizing Guide</i>	4
<i>Specifying Guide</i>	5
<i>Towers</i>	6
<i>Drain Pans</i>	8
<i>Remote Chillers</i>	9
<i>Countertop Systems</i>	10
<i>Glass Filling Stations &amp; Drop-Ins</i>	12
<i>Low Volume Systems</i>	13
<i>Instant Hot Water System</i>	14
<i>Filtration &amp; Accessories</i>	15

# Why Artisan Water?

At Crysalli, we believe great water elevates every beverage experience. Our artisan water systems are engineered to deliver chilled still and sparkling water that's not only refreshing, but also clean, consistent, and visually appealing, glass after glass. Whether you're serving premium cocktails, offering self-service hydration, or curating a craft beverage menu, Crysalli's systems provide the purity and performance you can taste. With flexible configurations, reliable carbonation, and a sleek design, our artisan water units outperform generic dispensers, helping you impress guests while reducing waste and operational costs.

## Sizing guide for artisan water systems

Model	Average Usage under 40° water	Usage Type	# of Seats/People
CR-1 variations CR-UCM1 CR-1MS CR-UCM-MS	37-50 liters per hour	Bottle service or craft beverage	Under 75 seats, 2-3 turns
CR-2 variations CR-UCM2	Higher volume faster recover 68-80 liters per hour	Bottle service, craft beverage, cafeteria, split tower systems	100 plus seats, high turn, or heavy short term peak use
CR-UCM2-2CL-S0096	Higher volume faster recover 68-80 liters per hour	Long draw with lengths further than 45ft. Vertical trunkline runs longer than 15ft. Challenging trunkline runs	100 plus seats, high turn, or heavy short term peak use
CP2000 series	Filling glasses by the oz, less than a liter per draw. Repeated use of 50, 12 oz drinks per hour ave. or periodic bottle filling	Service by the glass. Craft beverage. Coffee shops, cafes, wineries and offices	Less than 50 employees
CR-CPS series	Ice chilled cold plate. Manual fill, 40 lb ice storage. Melt off depends on usage. Heavy usage can require refilling every 30 min.	Self service only. Tight spaces where refrigeration based system cannot fit.	
2 valve towers and countertop models		Typically used in full service, bottle service and craft beverage applications	
3 valve towers and push button (PB) models		Typically used in self service applications	

## Features and benefits of countertop and remote chillers

### Countertop

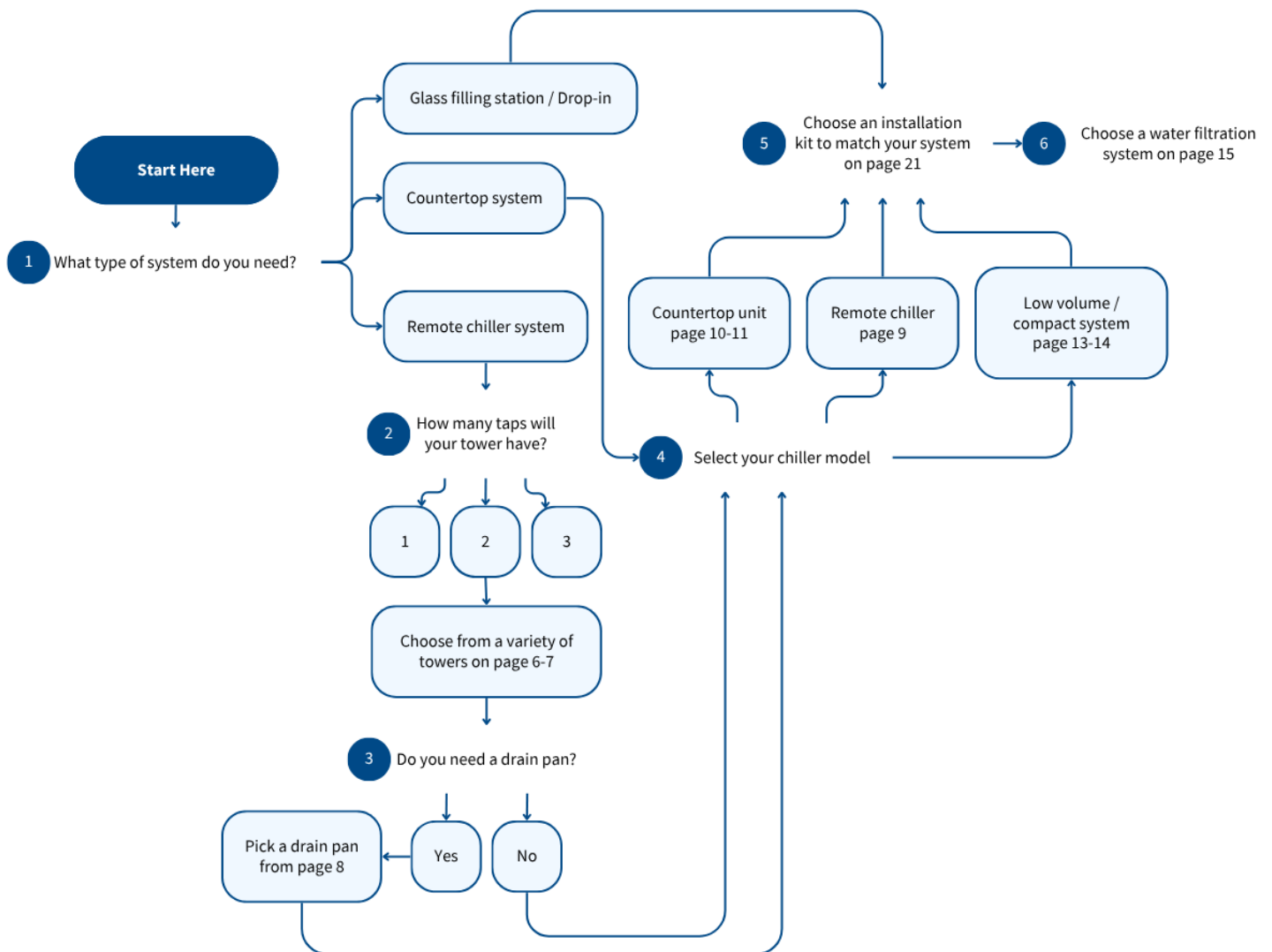
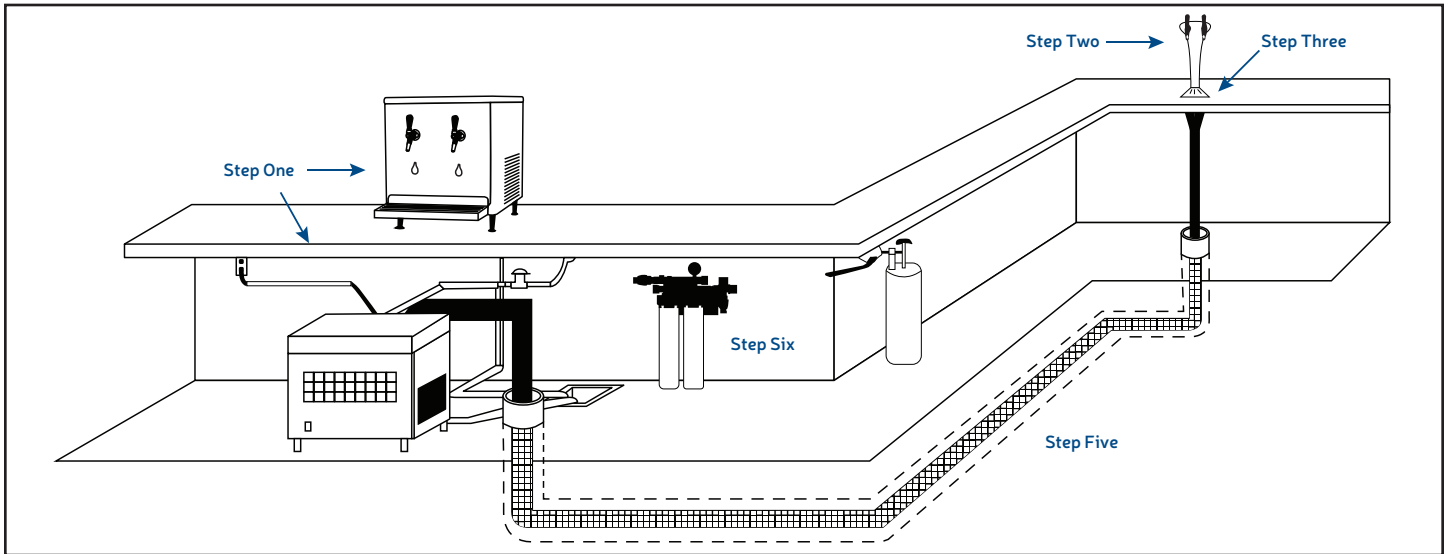
- Stylish curved look with brushed stainless exterior
- 4 model sizes for different volume needs
- Minimal countertop space use for large volume systems
- Pull handle dispensing valve styles are great for wait staff service use
- Push button dispensing styles are ideal for self-service use
- Single piece of equipment package just add the filter system; easy install
- Self-contained refrigeration
- Easy service accessibility
- Average dispensing temps of 34-40°
- Cold carbonation for ideal sparkling water bubbles

### Remote and undercounter chillers

- Pair with different draft tower dispensing options
- Sleek CBR draft towers in chrome or black chrome
- Push button dispensing towers
- 3 model size remote and undercounter chillers
- Can be located up to 75' away from towers
- Remotely locating chiller reduces noise and heat
- Or they can be placed in a well ventilated cabinet
- A single remote chiller can operate two towers
- Average dispensing temps of 34-40°
- Cold carbonation for ideal sparkling water bubbles



# Specifying guide for artisan water systems



To have a complete system, you must go through all Steps 1-6

# Towers

Crysalis has various draft towers designed for use with Crysalis chillers that provide sparkling and chilled still water as well as pre-mix beverages. A variety of size and finishes will meet all your needs and style. Standard with SSX self-closing faucets and optional sanitary dispense lever kits. All CBR towers are NSF listed.



CBR-V1BLC-SSX



CBR-V1BLC-SDLX



CBR-V1C-SSX



CBR-V1C-SDLX



CBR-V1C-MINI-SSX



CBR-V2C-MINI-SSX

Model	Description	Taps	Finish	Height	Clearance	Weight
CBR-V1BLC-SSX	Single valve, single product with SSX faucet	1	Black Chrome	21"	12.375"	10 lbs
CBR-V1BLC-SDLX	Single valve, single product with SSX faucet and sanitary dispense lever	1	Black Chrome	21"	12.375"	10 lbs
CBR-V1C-SSX	Single valve, single product with SSX faucet	1	Chrome	21"	12.375"	10 lbs
CBR-V1C-SDLX	Single valve, single product with SSX faucet and sanitary dispense lever	1	Chrome	21"	12.375"	10 lbs
CBR-V1C-MINI-SSX	Single valve, short height tower with SSX faucet	1	Chrome	13.57"	5.83"	8 lbs
CBR-V2C-MINI-SSX	Two valve, short height tower for sparkling and chilled still water with SSX faucets	2	Chrome	15.44"	7.7"	11 lbs
CBR-V2BLC-MINI-SSX	Two valve, short height tower for sparkling and chilled still water with SSX faucets	2	Black Chrome	15.44"	7.7"	11 lbs



CBR-V2BLC-SSX



CBR-V2BLC-SDLX



CBR-V2C-SSX



CBR-V2C-SDLX

Model	Description	Taps	Finish	Height	Clearance	Weight
CBR-V2BLC-SSX	Two valve tower for sparkling and chilled still water with SSX faucets	2	Black Chrome	21"	12.375"	12 lbs
CBR-V2BLC-SDLX	Two valve tower for sparkling and chilled still water with SSX faucets and sanitary dispense levers	2	Black Chrome	21"	12.375"	12 lbs
CBR-V2C-SSX	Two valve tower for sparkling and chilled still water with SSX faucets	2	Chrome	21"	12.375"	12 lbs
CBR-V2C-SDLX	Two valve tower for sparkling and chilled still water with SSX faucets and sanitary dispense levers	2	Chrome	21"	12.375"	12 lbs

Custom tower configurations and branded tap markers available, call 510.732.0100 for more details.

# Towers



CBR-V3BLC-SSX



CBR-V3BLC-SDLX



CBR-V3C-SSX



CBR-V3C-SDLX

Model	Description	Taps	Finish	Height	Clearance	Weight
CBR-V3BLC-SSX	Three valve tower for sparkling, chilled still and ambient still water with SSX faucets	3	Black Chrome	21"	12.5"	16 lbs
CBR-V3BLC-SDLX	Three valve tower for sparkling, chilled still and ambient still water with SSX faucets and sanitary dispense levers	3	Black Chrome	21"	12.5"	16 lbs
CBR-V3C-SSX	Three valve tower for sparkling, chilled still and ambient still water with SSX faucets	3	Chrome	21"	12.5"	16 lbs
CBR-V3C-SDLX	Three valve tower for sparkling, chilled still and ambient still water with SSX faucets and sanitary dispense levers	3	Chrome	21"	12.5"	16 lbs



CM-V2W



CR-X3PB-COMP



CM-2PB



CR-BG2B-FF

Model	Description	Taps	Finish	Width	Depth	Height	Clearance	Weight
CM-V2W	Two valve tower for sparkling and chilled still water, counter or wall mount	2	Brushed SS	10.69"		20.75"	12"	10 lbs
CR-X3PB-COMP	Three button tower with single spout faucet for low volume applications only	1	Chrome			12.5"	9"	8 lbs
CM-2PB	Two push button valves tower for sparkling and chilled still water, counter mount	2	Brushed SS	10.25"	8.75"	18.5"	12"	11 lbs
CM-2PB-RDP	Two push button valves tower for sparkling and chilled still water, counter mount with integrated recessed drain pan	2	Brushed SS	10.625"	10"	18.5"	12"	12 lbs
CR-BG2B-FF	Two button bar gun for sparkling and chilled still water with fast flow 30" hose							

Custom tower configurations and branded tap markers available, call 510.732.0100 for more details.

# Drain Pans

Crysalli drip tray and drain pans are made with our logo stamped into the tray to line up with the faucets of the countertop or draft tower and are manufactured of high grade stainless steel with a brushed finish.

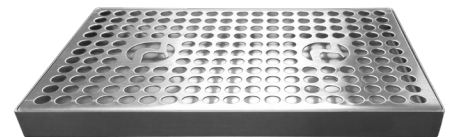
Available in flush mount or counter mount configuration. Countertop configuration available with or without drain line. Made in USA and NSF listed.



RDP-1SSQ-1CL



RDP-1SSQ-2CL



DP-CT



DP-CT-LD



RDP-3SSQ

Model	Description	Width	Depth	Height
RDP-1SSQ-1CL	Flush mount, stainless drain pan and tower mount Crysalli logo stamped for use with CBR-V1	12"	15.125"	0.75"
RDP-1SSQ-2CL	Flush mount, stainless drain pan and tower mount Crysalli logo stamped for use with CBR-V2	12"	15.125"	0.75"
RDP-3SSQ	Flush mount, stainless drain pan and tower mount Crysalli logo stamped for use with CBR-V3	15"	18.125"	0.75"
DP-CT	Stainless countertop mount drain pan, 0.5" drain pipe	10"	6"	0.75"
DP-CT-LD	Stainless countertop mount drip pan, no drain	10"	6"	0.75"

Custom drain pan configurations available. Call 510.732.0100 for more details.

# Remote Chillers

## Quiet Power. Flexible Dispensing. Now More Eco-Friendly.

Tuck the remote chiller unit out of sight to minimize noise and heat while enjoying maximum flexibility with a range of dispensing tower options. Choose from our sleek CBR draft towers—available in a variety of stylish finishes—or push-button dispensing towers. Available in three model sizes, Crysalli's remote chillers can be discreetly installed in a well-ventilated cabinet or up to 75 feet away from the tower. Perfect for serving chilled still and/or sparkling water to multiple tower locations, all units now feature eco-friendly R290 refrigerant for a more sustainable beverage solution.



CR-UCM1



CR-UCM-MS  
CR-UCW-BH



CR-UCM2  
CR-UCM2-SW-2



CR-UCM2-2CL-S0096  
CR-UCM2-SW-2-S0096

Model	Description	Production	Width	Depth	Height	Weight
CR-UCM1	Sparkling and chilled still water. Standard with two water coils. 35ft max trunk line run	50 LPH	12"	23.5"	24.5"	115 lbs
CR-UCM-MS	Midsized. Sparkling and chilled still water. 10ft max trunk line run	37 LPH	12.5"	18.75"	24.5"	80 lbs
CR-UCW-BH	Chilled still water only. 35ft max trunk line run	37 LPH	12.5"	18.75"	24.5"	70 lbs
CR-UCM2	Sparkling and chilled still water. Standard with two water coils. 45ft max trunk line run	80 LPH	20"	20"	20"	165 lbs
CR-UCM2-SW-2	Chilled still water only. For multi tower applications. 45ft max trunk line run	68 LPH	20"	20"	20"	135 lbs
CR-UCM2-2CL-S0096*	Sparkling and chilled still water. Two coil, high capacity external pump. 75ft max trunk line run	80 LPH	20"	20"	20"	165 lbs
CR-UCM2-SW-2-S0096	Chilled still water only. Two coil, high capacity external pump. 75ft max trunk line run	68 LPH	20"	20"	20"	150 lbs

Production quantity is determined on an hourly basis while maintaining a water temperature of <40°F  
For Crysalli remote chillers using reverse osmosis water, add -RO to the end of the model number and call for pricing.  
Additional coils are also available upon request for wine, coffee, and other beverage applications. Call for pricing.

## Required Install Kits *see page 21 for more details*

Model	Description
CR-KIT-UCM	Installation kit for: CR-UCM1, CR-UCM-MS, CR-UCM2, CR-UCM2-2CL, CR-UCM2-2CL-S0096
CR-KIT-SWUC	Installation kit for: CR-UCW-BH, CR-UCM2-SW-2, CP2000-SW-BH, CR-UCM2-SW-2-S0096

## Optional Install Kits *see page 21 for more details*

Model	Description
CBR2-FKM-V2	Installation kit for plumbing an additional dispensing tower with two valves to a single chiller
CBR2-FKM-V3	Installation kit for plumbing an additional dispensing tower with three valves to a single chiller
*CR-L5-30P-8FT	NEMA L5-30 power cord 125VAC, 10 gage, 30AMP for remote chiller CR-UCM2-2CL-S0096



# Countertop Systems

## Stylish. Compact. Now More Sustainable.

Our countertop dispense systems are thoughtfully designed to deliver refreshing sparkling and chilled still water—perfect for nearly any occasion or setting. These self-contained units feature an integrated cold carbonation system and come with your choice of pull-handle faucets for staff service or push-button valves ideal for self-serve environments. Engineered to take up minimal counter space while delivering premium ingredient water, each unit comes standard with two valves for chilled still and sparkling water, with an optional third valve for ambient still water. Now featuring eco-friendly R290 refrigerant for a cleaner, greener beverage experience.



CR-1  
CR-1MS  
CR-1SW



CR-1-3V



CR-1PB  
CR-1SW-PB



CR-1PB-3V

Model	Description	Production	Width	Depth	Height	Clearance	Weight
CR-1	Sparkling and chilled still water. Two pull handle faucets	50 LPH	12.375"	31"	24.5"	12"	115 lbs
CR-1MS	Midsized. Sparkling and chilled still water. Two pull handle faucets	37 LPH	12.5"	25.75"	24.5"	12"	85 lbs
CR-1SW	Midsized. Chilled still water only. Two pull handle faucets	37 LPH	12.5"	25.75"	24.5"	12"	75 lbs
CR-1-3V	Sparkling, chilled and ambient still water. Three pull handle faucets	50 LPH	12.375"	31"	24.5"	12"	115 lbs
CR-1PB	Sparkling and chilled still water. Two push button valves	50 LPH	12.375"	31"	24.5"	12"	115 lbs
CR-1SW-PB	Chilled still water only. Two push button valves	37 LPH	12.375"	23.75"	24.5"	12"	65 lbs
CR-1PB-3V	Sparkling, chilled and ambient still water. Three push button valves	50 LPH	12.375"	31"	24.5"	12"	115 lbs

Sanitary dispense levers are compatible with countertop pull handle units. Add quantity 1 of CR-SDL-1 to your order for each faucet. See pg 15 for more details  
Production quantity is determined on an hourly basis while maintaining a water temperature of <40°F.  
Mirrored finish stainless steel available. Call for pricing and availability.

## Required Install Kits *see page 21 for more details*

Model	Description
CR-KIT-CT	Installation kit for: CR-1, CR-1MS, CR-1-3V, CR-1PB, CR-1PB-3V, CR-2, CR-2-3V, CR-2PB, CR-2PB-3V
CR-KIT-SWCT	Installation kit for: CR-1SW, CR-1SW-PB, CR-2SW, CR-2SW-PB

# Countertop Systems

**R290**



CR-2  
CR-2SW



CR-2-3V



CR-2PB  
CR-2SW-PB



CR-2PB-3V

Model	Description	Production	Width	Depth	Height	Clearance	Weight
CR-2	Sparkling and chilled still water. Two pull handle faucets	80 LPH	20"	28"	24.75"	12"	165 lbs
CR-2SW	Chilled still water only. Two pull handle faucets	68 LPH	20"	28"	24.75"	12"	135 lbs
CR-2-3V	Sparkling, chilled and ambient still water. Three pull handle faucets	80 LPH	20"	28"	24.75"	12"	165 lbs
CR-2PB	Sparkling and chilled still water. Two push button valves	80 LPH	20"	26"	24.75"	12"	165 lbs
CR-2SW-PB	Chilled still water only. Two push button valves	68 LPH	20"	26"	24.75"	12"	135 lbs
CR-2PB-3V	Sparkling, chilled and ambient still water. Three push button valves	80 LPH	20"	28"	24.75"	12"	165 lbs

Sanitary dispense levers are compatible with countertop pull handle units. Add quantity 1 of CR-SDL-1 to your order for each faucet. See pg 15 for more details

Production quantity is determined on an hourly basis while maintaining a water temperature of <40°F

For Crysalli countertop chillers using reverse osmosis water, add -RO to the end of the model number and call for pricing.

Mirrored finish stainless steel available. Call for pricing and availability.

## Required Install Kits *see page 21 for more details*

Model	Description
CR-KIT-CT	Installation kit for: CR-1, CR-1MS, CR-1-3V, CR-1PB, CR-1PB-3V, CR-2, CR-2-3V, CR-2PB, CR-2PB-3V
CR-KIT-SWCT	Installation kit for: CR-1SW, CR-1SW-PB, CR-2SW, CR-2SW-PB

# Glass Filling Stations & Drop-Ins

## Engineered for Performance. Built for Impact.

Crysalli offers a versatile lineup of durable, commercial-grade stainless steel freestanding and drop-in cabinet systems—each designed to deliver refreshing sparkling and chilled still water with consistent quality and reliability. Depending on the model, these systems feature up to 40 pounds of ice storage, integrated water filtration, CO2 regulation, and an ice-cooled cold plate that flash chills water to 34°–40°F. Every pour is delivered through our signature Crysalli CBR draft tower, ensuring both performance and presentation that elevates any environment.



CR-GFS-V1L

CR-CPSW-DI

CR-CPS-DI

CR-CPS-FS

CCP2000-UCR-CBR

Model	Description	Storage	Width	Depth	Height	Clearance	Weight
CR-GFS-V1L	Drop-in. Filtered ambient still water glass station. Built-in water filter system with CBR-V1C-SDLX tower		9.5"	14.75"	33.75"	12.375"	19 lbs
CR-CPSW-DI	Drop-in. Ice cooled still water glass filling station. 40 lb cold plate system with CBR-V1C-SSX tower	40 lbs of ice	17.13"	24.9"	40"	12.5"	90 lbs
CR-CPS-DI	Drop-in. Ice cooled sparkling & still water glass filling station. 40 lb cold plate system with CBR-V2C-SSX tower	40 lbs of ice	17"	25"	50.75"	12.5"	115 lbs
CR-CPS-FS	Free-standing. sparkling & still water glass filling station. 40 lb cold plate system with CBR-V2C-SSX tower	40 lbs of ice	17"	24"	62.75"	12.5"	115 lbs
CCP2000-UCR-CBR	CP2000-UCR-BH, CBR-V2C-SSX and drain pan integrated into a stainless steel cabinet with built-in water filter and CO2 tank mount. Plug and play design. For low volume		24"	22"	58.25"	12.5"	200 lbs

## Required Install Kits *see page 21 for more details*

Model	Description
CR-KIT-CPS	Installation kit for: CR-CPS-DI, CR-CPS-FS, CR-CPSW-DI

# Low Volume Systems

## Compact Convenience. Cold Carbonation. Now More Sustainable.

Designed for low-volume applications, the CP2000 Series features an integrated cold carbonation system and a built-in recirculation pump, allowing for undercounter installation up to 6 feet from the dispense tower. The countertop models are quiet, space-saving, and engineered for environments where footprint matters. Each unit delivers refreshing sparkling and chilled still water at an average temperature of 34°–40°F—perfect for office spaces, cafés, and breakrooms. Now featuring eco-friendly R290 refrigerant for a more sustainable, energy-efficient solution.



Model	Description	Production	Width	Depth	Height	Clearance	Weight
CP2000-R-UC-BH	Undercounter chiller unit. Sparkling and chilled still water. 6' maximum recirculating trunkline length	(50) 12 oz cups per hour	11.75"	17.5"	16.5"		80 lbs
CP2000-SW-BH	Undercounter chiller unit. Chilled still water only. 6' maximum recirculating trunkline length	(50) 12 oz cups per hour	11.75"	17.5"	16.5"		75 lbs
CP2000-CT2	Countertop pull handle faucets. Sparkling and chilled still water	(50) 12 oz cups per hour	12"	26"	20.75"	9"	80 lbs
CP2000-CT3	Countertop pull handle faucets. Sparkling, chilled and ambient still water	(50) 12 oz cups per hour	12"	26"	20.75"	9"	80 lbs
CP2000-CT2-PB	Countertop push button valves. Sparkling and chilled still water	(50) 12 oz cups per hour	12"	21.5"	20.75"	9"	80 lbs
CP2000-CT3-PB	Countertop push button valves. Sparkling, chilled and ambient still water	(50) 12 oz cups per hour	12"	21.5"	20.75"	9"	80 lbs

Sanitary dispense levers are compatible with countertop pull handle units. Add quantity 1 of CR-SDL-1 to your order for each faucet. See pg 15 for more details  
 Production quantity is determined on an hourly basis while maintaining a water temperature of <40°F.  
 Mirrored finish stainless steel available. Call for pricing and availability.

## Required Install Kits *see page 21 for more details*

Model	Description
CR-KIT-CPCT	Installation kit for: CP2000-CT2, CP2000-CT2-PB, CP2000-CT3, CP2000-CT3-PB
CR-KIT-CPUC	Installation kit for: CP2000-R-UC-BH and CP2000-SW-BH

# Low Volume Systems



Model	Description	Production	Width	Depth	Height	Clearance	Weight
Serenity-X3	Undercounter chiller system kit with CR-X3PB faucet, CR-12FC filter system install kit and leak detector device	(40) 8 oz cups per hour	10.5"	14.375"	18.125"	9"	60 lbs
Serenity-CBRM	Undercounter chiller system kit with CBR mini tower, CR-12FC filter system install kit and leak detector device	(40) 8 oz cups per hour	10.5"	14.375"	18.125"	7.7"	60 lbs
CP-JR-UC-SW-BH-K	Undercounter chilled still water only. Includes complete install kit with water filter and leak block sensor	(40) 8 oz cups per hour	10.5"	14.375"	18.125"		60 lbs
CP-JR-CT2FR-K	Countertop, two pull handle faucets. Built-in filter. Includes complete install kit with water filter, leak block sensor and water pressure reducer valve	(40) 8 oz cups per hour	10.625"	21.25"	17"	8"	60 lbs
CP-JR-CT2FR-PB-K	Countertop, two push button valves. Built-in filter. Includes complete install kit with water filter, leak block sensor and water pressure reducer valve	(40) 8 oz cups per hour	10.75"	18.125"	17"	7.375"	60 lbs
CP-JR-CT1SWF-K	Countertop chilled still only, single pull handle faucet. Filter built in. Includes complete install kit with water filter and leak block sensor	(40) 8 oz cups per hour	10.625"	21.25"	17"	8"	60 lbs
CP-JR-CT1SWF-PB-K	Countertop chilled still only, single push button valve. Filter built in. Includes complete install kit with water filter and leak block sensor	(40) 8 oz cups per hour	10.75"	18.125"	17"	7.375"	55 lbs

Sanitary dispense levers are compatible with countertop pull handle units. Add quantity 1 of CR-SDL-1 to your order for each faucet. See pg 15 for more details  
 The Serenity and CP-JR units have an installation kit included in the purchase.  
 Production quantity is determined on an hourly basis while maintaining a water temperature of <40°F.  
 Mirrored finish stainless steel available. Call for pricing and availability.

# Instant Hot Water System

Model	Description
CR-HOT300-SSD-K	Instant hot water system with swivel spout hot water faucet, stainless steel water heater, and water filter system. Includes complete install kit with water pressure reducing valve, angle stop adapter, fittings, and hose



CR-HOT300-SSD-K

# Filtration & Accessories

## Filtration



Model	Description
CR-24FC	Twin filter system with compact Fibredyne filters, 3/4" inlet & outlet. 17" width x 19" height. 5 gpm, 30,000 gal, TOC & 1/2 micron filtration
CR-24FCP	Twin filter system with pre-filter and Fibredyne filters, 3/4" inlet & outlet. 21.75" width x 19.25" height. 5 gpm, 30,000 gal, TOC & 1/2 micron filtration
CR-14FC	Single filter system with compact Fibredyne filters, 3/8" inlet & outlet. 8" width x 18" height. 2.5 gpm, 15,000 gal, TOC & 1/2 micron filtration. For the CP2000 series only
CR-14FCP	Single filter system with pre-filter and Fibredyne filters, 3/8" inlet & outlet. 14" width x 15" height. 2.5 gpm, 15,000 gal, TOC & 1/2 micron filtration. For the CP2000 series only
4FC	Replacement water filter. High capacity 15,000 gallon. Fibredyne cartridge
2FC	Replacement water filter. 6,000 gallon capacity. Compact Fibredyne cartridge. For the CP-JR models only
ECP5-10	Replacement water filter. Pleated pre-filter. 10 inches
CR-2.5X10PLTD-AG	Replacement water pre-filter, electropositive fibrous filter media with high particle removal efficiency as well as high dirt holding capacity. 10 inches

Additional and custom configured water filtration systems for individual water quality needs are available. The use of non Crysalli-approved water filter systems can result in undesirable water quality and product performance.

## Accessories



Model	Description
CR-SDL-1	Sanitary dispense lever for use with SSX0101-HEX-SC and X0101-B-HEX on CR-1 and CR-2 countertop units and CM-V2W. Lever only
CR-SDL-SSX1	Sanitary dispense lever with self closing SSX0101-HEX-SC faucet and shank, for retro fit on CBR and other draft towers. Lever with SSX0101 faucet
X100306C CHROME SPARKLING	Ergonomic chrome tap handle. Sparkling water graphic
X100306C CHROME STILL	Ergonomic chrome tap handle. Chilled still water graphic
X100306C CHROME CHILLED	Ergonomic chrome tap handle. Still water graphic
CR-MDLN-V1	For CBR-V1, one straight medallion holder. Specify water type
CR-MDLN-V2	For CBR-V2, two straight medallion holders. Sparkling and chilled still
CR-MDLN-V3	For CBR-V3, three straight medallion holders. Sparkling, chilled and ambient still

# Accessories



CR-ABUCM



CR-TFB1



CR-L5-30P-8FT



CR-WMB1



CR-WMB2



CR-WMB-18X18SS



CR-804-002



CR-804-023



CR-804-026



CR-LBS10JG



S0747-SET



S1318-SET



PASVPP6



CR-CTAC-2CK



CR-CWB1



CR-CWB2



CR-4L38



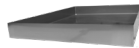
CR-PC160-14FCV



CR-S115-14FCV



CR-OFP-CP



CR-OFP-1



CR-OFP-2

Model	Description
CR-ABUCM	Air baffle accessory kit for remote chillers CR-UCM1, CR-UCM-MS, CR-UCM2, and CR-UCW-BH
CR-TFB1	Thermostatic fan box for additional air circulation in cabinets, use with remote chillers
CR-L5-30P-8FT	NEMA L5-30 power cord 125VAC, 10 gage, 30AMP for remote chiller CR-UCM2-2CL-S0096
CR-WMB1	Wall mounting bracket for the CR-UCM1, CR-UCM-MS & CR-UCW-BH
CR-WMB2	Wall mounting bracket for the CR-UCM2 series remote chillers
CR-WMB-18X18SS	Wall mounting bracket for the CR-804-023 and CR-804-026 water boost system
CR-804-002	Low volume water boost system. 21 oz. accumulator tank, 1 amp max
CR-804-023	Medium water boost system, 2 gal accumulator tank, replaceable bladder, 1 amp max
CR-804-026	Water boost system, 6 gal accumulator tank, replaceable bladder, 1 amp max
CR-LBS10JG	In-line leak detector with auto shut-off. For use with any Crysalli chiller system (Included in install kits)
S0747-SET	4.25" leg kit. (Standard legs on the CR-UCM1, CR-UCM-MS, CR-UCW-BH, CR-1, and CR-2 series chillers)
S1318-SET	Adjustable cushion feet. (Standard feet on the CR-UCM2, CP2000-R-UC-BH, and CP2000-SW-BH series chillers)
PASVPP6	Angle stop adapter splice
CR-BPFK	Crysalli water filter system bypass fitting kit
CR-CTAC-2CK	CO2 cylinder auto change device. Includes hoses with check valves fittings, wall bracket and CR-PC160 high pressure primary CO2 regulator
CR-CWB1	One CO2/N2 gas cylinder safety wall bracket
CR-CWB2	Two CO2/N2 gas cylinder safety wall bracket
CR-4L38	Four 3/8" lines in insulated 2" diameter trunk line. Two product lines, and re-circulating lines
CR-PC160-14FCV	Primary CO2 regulator. High pressure 160 PSI 1/4" flare with check valve, nylon flare and cylinder washer
CR-S115-14FCV	Single secondary CO2 regulator. Mid-pressure 115 PSI with 1/4" flare HP inlet capped HP outlet with shut off
CR-OFP-CP	Aluminum utility spill tray for CP-JR-UC, CR-UCM-MS, CP2000-UC & CR-UCW-BH undercounter chillers (15.875" x 21.75" x 1")
CR-OFP-1	Aluminum utility spill tray for CR-UCM1 chillers (18" x 25.875" x 1")
CR-OFP-2	Plastic utility spill tray for CR-UCM2 & CR-UCM2-2CL chillers (22"x 22" x 1.5")



## **Nitro Cold Brew**

*ProFusion Flex Systems*  
*Accessories*

*18*  
*19*

# ProFusion Flex Systems

Give your customers more than a drink. Give them an experience.

The ProFusion Flex allows you to dispense two beverages from one keg or RTD BIB, offering your customers a cold drink as it is from the keg or BIB as it is, and also Profused with nitrogen. When you Profuse a beverage with nitrogen, you transform it into a special experience of watching it cascade in the glass while enhancing the flavors and providing a silky texture experience as it's sipped. Go ahead and flex your beverage muscle and give your customers a Pro beverage experience.



iN2-TK2P-P  
iN2-TK2P-D

iN2-DD2P-P  
iN2-DD2P-D

CR-1-iN2-2P

CP2000-CT2-iN2-2P

Model	Description	Width	Depth	Height	Clearance	Weight
iN2-2P	ProFusion Flex injection device	10.5"	4.5"	12.75"		60 lbs
iN2-TK2P-P	ProFusion beverage dispensing tapping kit with premix tank couplers	10.5"	4.5"	12.75"	8"	60 lbs
iN2-TK2P-D	ProFusion beverage dispensing tapping kit with "D" style keg coupler	10.5"	4.5"	12.75"	8"	60 lbs
iN2-DD2P-P	ProFusion beverage dispensing direct draw system with premix tank couplers	24"	30.125"	49.25"	8"	174 lbs
iN2-DD2P-D	ProFusion beverage dispensing direct draw system with "D" style keg coupler	24"	30.125"	49.25"	8"	174 lbs
CR-1-iN2-2P	ProFusion beverage dispensing countertop system in brushed stainless steel	12.38"	27.5"	25"	8.5"	115 lbs
CP2000-CT2-iN2-2P	ProFusion beverage dispensing countertop system. Available in brushed stainless steel, white, or matte black finish	12"	26"	21.5"	8.5"	75 lbs

## Required Install Kits *see page 21 for more details*

Model	Description
CR-KIT-CR1-iN2-P	Installation kit for: CR-1-iN2-2P with premix tank couplers
CR-KIT-CR1-iN2-D	Installation kit for: CR-1-iN2-2P with "D" style keg coupler
CR-KIT-CPCT-iN2-P	Installation kit for: CP2000-CT2-iN2-2P with premix tank couplers
CR-KIT-CPCT-iN2-D	Installation kit for: CP2000-CT2-iN2-2P with "D" style keg coupler
CR-KIT-CT-iN2-BIB	Installation kit for: CR-1-iN2-2P & CP2000-CT2-iN2-2P with BIB rack assembly

# Accessories



CR-PMT-2.5G



CR-PMT-5G



CR-10-1591



CR-BLC-G



CR-BLC-L



CR-220DSS



CBR-V2C-N2G26



CR-F2S-G26SS-N2



CLM-V2-N2



CR-G26SS



CR-1663



CR-PN60-516BSO



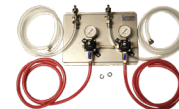
CR-NTAC-2CK



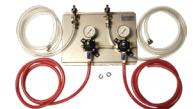
CR-CWB1



CR-CWB2



CR-RP2FAW



CR-RP3FAW

Model	Description
CR-PMT-2.5G	Premix tank, ball lock coupler style, 2.5 gallon
CR-PMT-5G	Premix tank, ball lock coupler style, 5 gallon
CR-10-1591	1-2 cold brew system cleaner and sanitizer
CR-BLC-G	Inlet gas ball lock coupler, coupler for pre-mix tanks
CR-BLC-L	Outlet liquid ball lock coupler, coupler for pre-mix tanks
CR-220DSS	Stainless steel "D" style keg coupler, for standard domestic kegs
CBR-V2C-N2G26	Two faucet chrome CBR tower with nitro taps
CR-F2S-G26SS-N2	Industrial style, stainless steel, two tap pipe tower with N2 faucets
CLM-V2-N2	3" column tower with 304 stainless steel stout style faucets. NSF listed
CR-G26SS	304 stainless steel stout style faucet for N2 beverages, no shank
CR-1663	304 stainless steel shank with fittings. For use with CR-G26SS faucet
CR-PN60-516BSO	Primary regulator for nitrogen tank. 0-60 PSI, 5/16" Barbed outlet fitting and shut off valve
CR-NTAC-2CK	N2 tank auto changeover device, 2 cylinder kit. Comes with two 36" hoses, two tank wrenches, wall mount bracket, and a primary N2 regulator
CR-CWB1	One CO2/N2 gas cylinder safety wall bracket
CR-CWB2	Two CO2/N2 gas cylinder safety wall bracket
CR-RP2FAW	Two product reg panel, with hoses and fittings
CR-RP3FAW	Three product reg panel, with hoses and fittings

# Accessories

## Mixing Bases



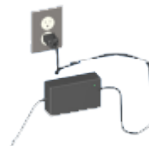
CMS9-950-701



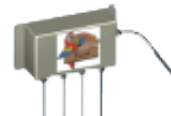
CMS12-950-702



CMBS-950-705



CMBS-950-706



CMBS-950-707



CMBS-950-708



CMBS-950-710



CMBS-950-709



CMBS-950-712

Model	Description
CMS9-950-701	9" Single base system to include a 9" base, 2 amp power supply and spin bar
CMS12-950-702	12" Single base system to include a 12" base, 2 amp power supply and spin bar
CMBS-950-705	Power supply, 12VDC 2 amp. For use with one mixing base
CMBS-950-706	Power supply, 12VDC 6 amp. For use with power splitter, to connect multiple mixing bases
CMBS-950-707	Power splitter to connect up to 4 mixing bases to one 6 amp power supply CMBS-950-706
CMBS-950-708	Power extension, 12'
CMBS-950-709	9" mixing base, less power supply and spin bar
CMBS-950-710	Spin bar magnet 2" for pre-mix keg. Order at least one per mixing base
CMBS-950-712	12" mixing base, less power supply and spin bar

# Installation Kit Breakdowns

Model	Description
CR-KIT-CT	Installation kit for: CR-1, CR-1MS, CR-1-3V, CR-1PB, CR-1PB-3V, CR-2, CR-2-3V, CR-2PB, CR-2PB-3V Includes: LBS-10JG leak block sensor, fittings and oetiker clamps and extra tubing to install the filter systems and countertop unit
CR-KIT-UCM	Installation kit for: CR-UCM1, CR-UCM-MS, CR-UCM2, CR-UCM2-2CL-S0096 Includes: LBS-10JG leak block sensor, 5 ft of CR-4L38 trunkline, various fittings and oetiker clamps, extra tubing and insulation to install the filter system, CR-UCM# and CBR or CM tower
CR-KIT-SWCT	Installation kit for: CR-1SW, CR-1SW-PB, CR-2SW, CR-2SW-PB Includes: LBS-10JG leak block sensor, various fittings and oetiker clamps, and extra tubing. Chilled still water units only
CR-KIT-SWUC	Installation kit for: CR-UCW-BH, CR-UCM2-SW-2, CP2000-SW-BH Includes: LBS-10JG leak block sensor, 5 ft of CR-4L38 trunkline, various fittings and oetiker clamps, adapters, and extra tubing. Chilled still water units only
CR-KIT-CPS	Installation kit for: CR-CPS-DI, CR-CPS-FS, CR-CPSW-DI Includes: water filter fittings, angle stop adaptor and 8 ft 3/8" hose
CR-KIT-CPCT	Installation kit for: CP2000-CT2, CP2000-CT2-PB, CP2000-CT3, CP2000-CT3-PB Includes: LBS-10JG leak block sensor, water pressure reducer valve, fittings needed to complete the installation of CR-14FC filter system to countertop CP2000's, and extra tubing
CR-KIT-CPUC	Installation kit for: CP2000-R-UC-BH and CP2000-SW-BH Includes: LBS-10JG leak block sensor, water pressure reducer valve, fittings needed to complete the installation of CR-14FC filter system to remote chiller CP2000-R-UC-BH and tower or faucet, and extra tubing
CBR2-FKM-V2	Fittings kit for adding a second CBR-V2C or other 2 valve dispenser tower off the trunkline from a single UCM remote chiller
CBR2-FKM-V3	Fitting kit for adding a second CBR-V3C or other 3 valve dispenser tower off the trunkline from a single UCM remote chiller
CR-L5-30P-8FT	NEMA L5-30 power cord 125VAC, 10 gage, 30AMP for remote chiller CR-UCM2-2CL-S0096
CR-KIT-CR1-IN2-P	Installation kit for: CR-1-iN2-2P with premix tank couplers Includes: CR-PN60 primary nitrogen regulator, plumbing connections, and includes two premix tank connections (gas and liquid)
CR-KIT-CR1-IN2-D	Installation kit for: CR-1-iN2-2D with "D" style keg coupler Includes: CR-PN60 primary nitrogen regulator, plumbing connections, and includes one D style keg connector
CR-KIT-CPCT-IN2-P	Installation kit for: CP2000-CT2-iN2-2P with premix tank couplers Includes: CR-PN60 primary nitrogen regulator, plumbing connections, and two premix tank connections (gas and liquid)
CR-KIT-CPCT-IN2-D	Installation kit for: CP2000-CT2-iN2-2P with "D" style keg coupler Includes: CR-PN60 primary nitrogen regulator, plumbing connections, and one D style keg connector
CR-KIT-CT-iN2-BIB	Installation kit for CR-1-iN2-2P & CP2000-CT2-iN2-2P with BIB rack assembly. Includes: CR-PN60 primary nitrogen regulator, plumbing connections, and BIB rack assembly sized for "illy®" ready to drink (RTD) cold brew BIB

# Innovative Dispense Solutions

Call for pricing





## **Mission:**

Crysalli strives for excellence as leaders, educators, innovators and producers of water and other high quality beverage dispensing equipment.

## **Vision:**

- Maintain a pure and simple focused approach to our equipment and customer experiences.
- Proactive empowerment, innovation and ownership of customer solutions.
- Pay attention to the details.
- Treat everyone as we desire to be treated.
- Never let profits get in the way of doing the right thing.
- Build and maintain enduring relationships.
- Continual education and personal improvements.
- Take the time to enjoy a cold glass of sparkling water.
- Have fun and enjoy selling and supporting Crysalli.

---

### **Product Styles**

#### **Commercial remote chillers**

- Sparkling and still
- Still chilled only
- Used with draft tower options

#### **Commercial countertop chillers**

- Sparkling and still
- 2 and 3 valve configurations
- Still chilled only

#### **Low volume CP series**

- Undercounter chillers
- Countertop chillers

**Always include an install kit with new installation systems**

**Always include water filtration system with new installations**

- Contact your local distributor for replacement water filter cartridges

*Specifications in this catalog are subject to change without prior notice*

### **Warranty**

#### **Commercial warranty: 1 year parts and labor**

- Crysalli systems must be used with approved install kit, water filtration, and dispensing towers to be eligible for warranty coverage

#### **All Serenity and JR units: 1 year parts 90 days labor**

### **Prices**

- Prices are FOB Hayward, California
- All prices and specifications are subject to change without notice.
- All weights and measurements shown herein are approximate
- Product found in AutoQuotes
- Contact factory for Minimum Advertised Price (MAP) policy

### **Resources**

- Available in AutoQuotes
- Available in KCL
- CAD files
- 3D CAD files
- REVIT files

### **Return of Product**

Prior authorization must be granted by Crysalli before equipment can be returned for credit. Returns will only be authorized within 90 days of invoice date. Return authorizations are valid for 30 days. Equipment approved for return is subject to a 25% restocking charge.

Returned equipment must be shipped freight prepaid, packed in original carton, and received in good condition.





## Why Crysalli?

- Made in the USA
- 1 year parts and labor warranty
- All units 120 volts
- NSF/ETL and UL approved
- City of LA approved
- Detailed installation and fitting kits
- CO2 regulators and other accessories
- Comprehensive install instructions
- Multiple dispensing tower selections
- Custom built models and configurations available
- Local availability and support via a nationwide network of distribution companies
- Nationwide network of installers and service companies available

Crysalli Beverage Systems  
1739 Sabre Street  
Hayward, CA 94545  
[www.crysalli.com](http://www.crysalli.com)  
510.732.0100

