



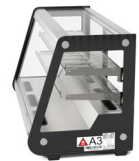
SPEC SHEET

KoolMore 48 in. Countertop Bakery Display Refrigerator in Stainless Steel, 7 cu. ft.

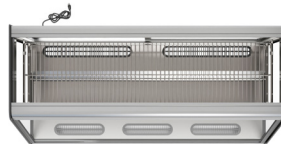
Model: CDC-7C-SS

FEATURES

- Refrigerated Bakery Display Case
- Dual Sliding Glass Doors
- Temperature Range: 32° to 53.6°F
- Refrigerant Type: R-290
- NEMA 5-15P Plug
- Weight: 189.5 lbs.
- Long 71 in. Power Cord
- LED Lighting with Clear Glass Front
- Adjustable Temperature Settings



CLOSE UP IMAGES



TECHNICAL SPECS

Dimensions

Length	48.1
Width	23
Height	27
Interior Width	46.5
Interior Depth	17.7
Interior Height	19.3

Capacity

Individual Shelf Capacity	22 lbs.
Gross Cubic Feet	7.06
Net Cubic Feet	4.24
Weightlbs	189

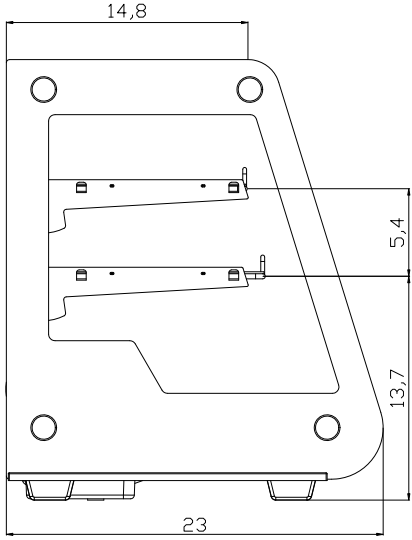
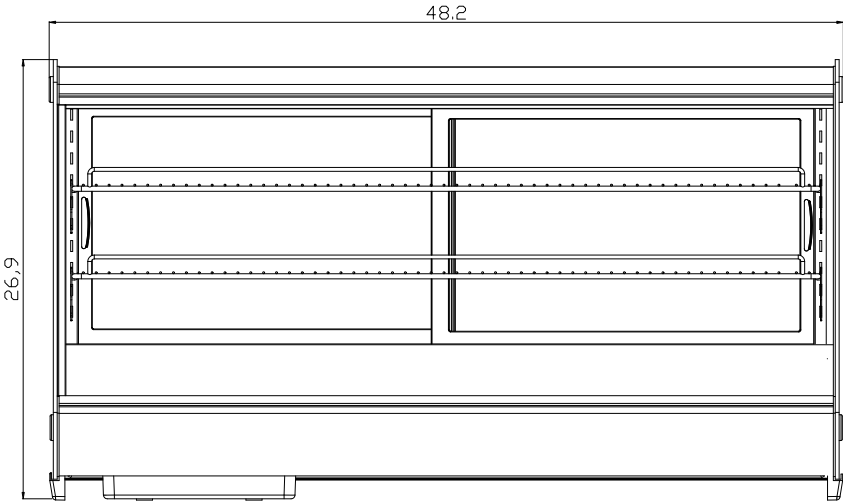
Features & Materials

Electrical Installation Type	Plug-in
Installation Type	Freestanding
Minimum Back Air Clearance In	2 in.
Minimum Side Air Clearance In	Not Required
Counter Depth	Yes
Control Type	Digital
Temperature Display Type	LED
Defrost Type	Automatic
Refrigerant Type	R-290
Compressor Brand	NUT70NR
Compressor Location	Bottom Mounted
Evaporator Brand	CHANGER
Condenser Brand	CHANGER
Temperature Range	33 - 54 F
Ambient Temperature Range	61-90 F
Number Of Doors	2
Door Style	Sliding
Number Of Shelves	2
Shelf Material Type	Chrome Plated Steel Wire
Shelves Adjustable	Yes, 8 Positions
Exterior Material	Stainless-Steel and Glass
Interior Material	Stainless-Steel, Glass and Polymer
Color Finish	Stainless-Steel
Color Door Handles	Black
Legs Material	Polymer
Legs Adjustable	No

Electric & Certification

Amps	3.9
Hertz	60
Phase	1
Voltage	110
Wattage	330
Plug Type	NEMA 5-15P
Power Cord Length	94
Certifications	ETL Listed for Safety and Sanitation

Plan View



CERTIFICATIONS



718-576-6342
info@koolmore.com