

General Information

Project Name: _____

Consultant: _____

Item #: _____

Model #: _____

Quantity: _____



Model #UCS-SM8
Shown w/ Optional
Chute

Specifications

UCS-SM Model Undercounter Mobile Soak Sinks are 16GA type 300 series stainless steel pitched to a 3½" drain opening. Sink has interior covered corners. Unit is mounted on 1⅝" diameter 16GA stainless steel legs and 5" diameter casters, (2) w/ brakes.

Unit comes standard with twist lever drain and optional silverware chute available.

All welds are ground smooth and polished to a #4 finish.

Product Guide

IMC undercounter mobile soak sinks are great for soaking dirty silverware prior to washing.

Lower height allows unit to be stored under the worktable.

When unit comes w/ optional silverware chute, it makes it easy to push silverware off the table and down the chute into sink, making for a fast cleanup.

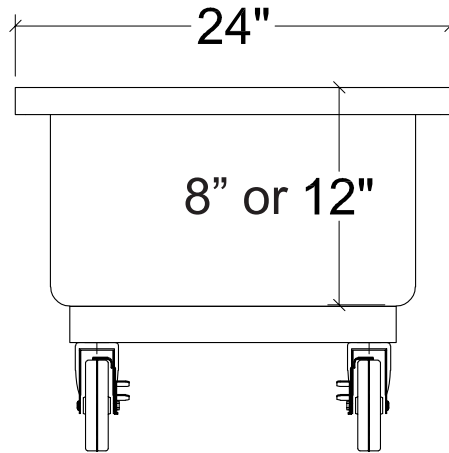
Options

- CBM-20** - Corner Bumpers
- 10" Deep Bowl
- CHSS** - Silverware Chute
- SB** - Scrap Basket
- BAC** - Add Brakes to Casters (Standard Is 2 with Brakes)

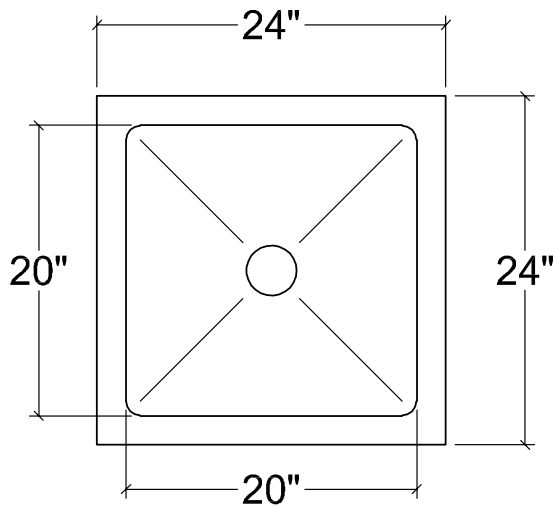


UCS-SM-50 1222

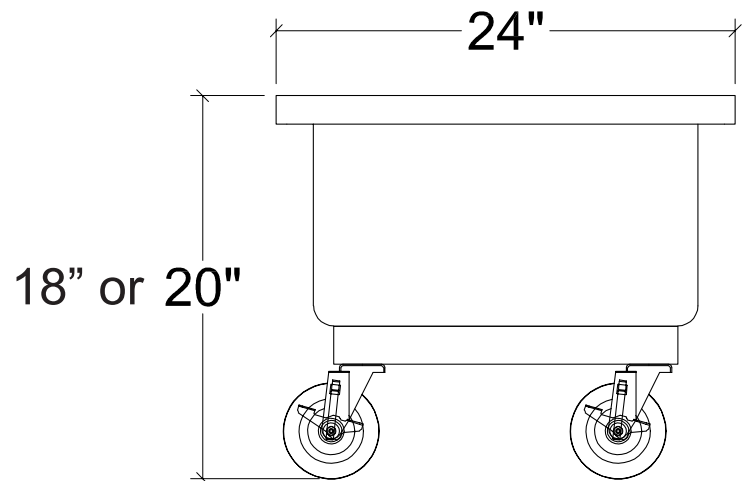
DRAWINGS



ELEVATION



PLAN



SIDE ELEVATION

UNDERCOUNTER MOBILE SOAK SINK

Model	Overall Size (W x L x H)	Bowl Size (W x L x D)
□ UCS-SM8	24" x 24" x 18"	20" x 20" x 8" Deep
□ UCS-SM12	24" x 24" x 20"	20" x 20" x 12" Deep

Specifications subject to change without notice.

UCS-SM-50 1222