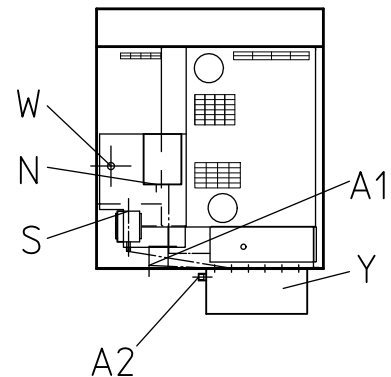
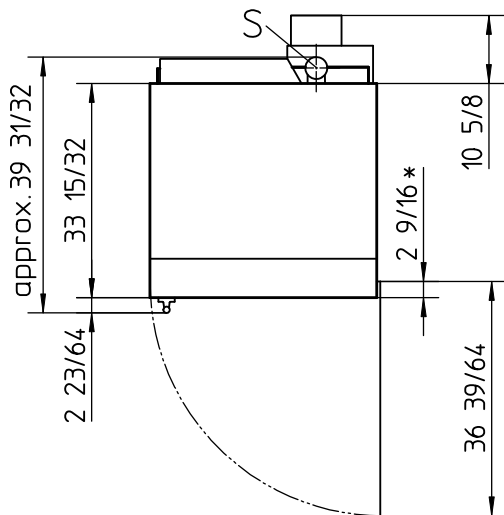
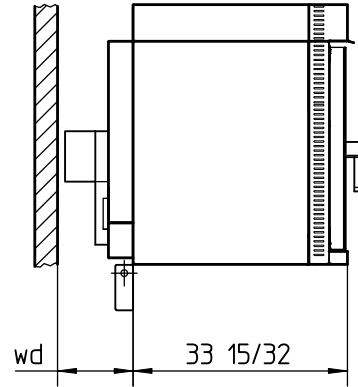
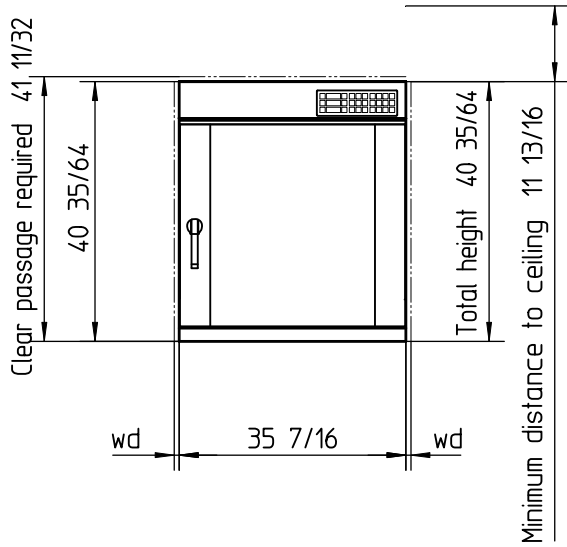


MIWE econo Type EC 8.1826



wd: Necessary minimum distance to wall:
to the side 25/32
backwards 11 13/16

* The customer should not install any covering
in this area!

Note:
The door hinge (on the left or the right side)
is to be carried out according to the order!

Minimum inside width of the bring-in
opening: 35 53/64

- A1 Baking chamber water outlet 3/4" hose
-for model with CC with drain to
on-site pipe - not to siphon
- A2 Water discharge nom.diam. 1 7/64
- N Power supply 13,4 kW (3x50A)**
- S Steam discharge nom.diam. 3 5/32
- W Water supply R3/4"
- Y Siphon optional

** Protection by fuses with 208V; 3/-/PE; 60Hz

Water discharge provided by customer:
minimum nominal diameter 1 31/32

Total weight without baking trays: approx.215kg

We reserve the right to change any technical specifications!

Transmission, reproduction, utilization and communication of these technical data are not permitted unless expressly authorized by MIWE. Any noncompliance will result in obligation to pay damages. All rights reserved in the event of a patent grant or registration as a utility model.



Datum	29.11.17	Maßstab	1:30
Bearbeiter	06.12.18	Name	V. Shirin.
Geprüft	06.12.18	Schn. Mi.	Schn. Mi.
Freigegeben		Freig-Stat	