



PROJECT: _____
 ITEM # _____ QTY: _____
 MODEL # _____
 AIA # _____ SIS # _____

SELF-CONTAINED ROLL-IN BLAST CHILLING / SHOCK FREEZING

SELF-CONTAINED ROLL-IN BLAST CHILLING / SHOCK FREEZING

VBCFT-20-202PU-HC

EXCLUSIVE WARRANTY

- ▶ 3 Year Parts & Labor Warranty
- ▶ 5 Year Compressor Warranty
- ▶ Exclusive 2 Year Warranty On Magnetic Door Gaskets



Note: Shown With Optional Ramp

CABINET CONSTRUCTION

- Stainless Steel Exterior And Interior (with rounded interior corners)
- Stainless Steel Door Liner
- Die-Formed Leak-Proof Floor
- High Density, Polyurethane Insulation
- Anti-Condensation Resistance, Placed On The Door Under The Gasket
- Hinged Door With Gasket And Closing Ramp System
- Ergonomic Vertical Handle With Magnetic Door Close
- Thick Stainless Steel Internal Bumper To Avoid Damage Caused By The Cart
- Circuit Breaker For Compressor Protection

FEATURES

- 5" High-Definition, Easy-To-Use Touch Display
- Blast Chilling And Shock Freezing Modes
- Identifiable Mode Settings
- Customized Blast Chilling And Blast Freezing (100 cycles can be memorized)
- USB Connection For Uploading And Downloading Data
- Heated Core Probe, With 4 Measuring Points
- Pre-Cooling Function
- Maximum Interior Dimensions For Carts: 35"W x 40"D x 74"H (not included)
- Ramp Dimension: 43.2"W x 31.9"D (ramp not included)

REFRIGERATION

- Self-Contained Refrigeration System Uses R290 Refrigerant
- Copper-Aluminum Evaporator With Anti-Corrosion Treatment
- High-Ventilation Evaporator To Ensure The Highest Efficiency Of The Cooling System
- Evaporator Installed On The Back With Accessible Cover And Adjustment Of The Speed Of The Evaporator Fans



Please Verify Qualifying Units By Visiting:
www.energystar.gov/cfs

OPTIONS & ACCESSORIES

- 4 Points Sensor Probe
- Ramp (not included)

3779 Champion Blvd, Winston-Salem, NC 27105

ph: (888) 845-9800 | fax: (800) 253-5168

Sales@VictoryRefrigeration.com | VictoryRefrigeration.com

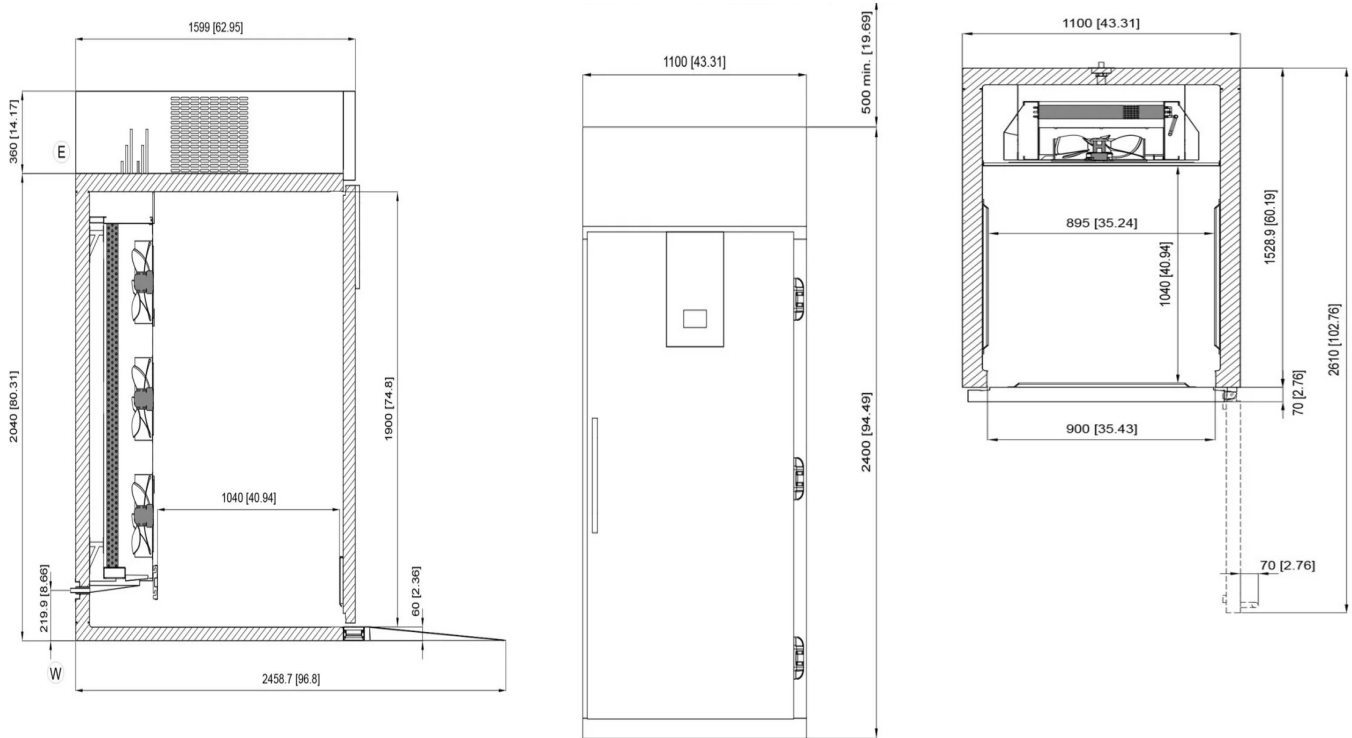
Rev. 10/30/25 Printed in U.S.A.

APPROVAL: _____ DATE: _____



SELF-CONTAINED ROLL-IN BLAST CHILLING / SHOCK FREEZING

VBCFT-20-202PU-HC



We reserve the right to change specifications and product design without notice. Such revisions do not entitle the buyer to corresponding changes, improvements, additions or replacements for previously purchased equipment. Dimensional tolerances +/- 1/4". Metric dimensions (MM)

CHARACTERISTICS		ELECTRICAL DATA		PAN COUNT & PERFORMANCE	
Width, Overall (in.)	43.3"	Cabinet Voltage	208/230/3/60	Chilling Capacity In 90 Min	242.6 lbs
Depth, Overall (in.)	64"	Frequency	60 Hz	Freezing Capacity In 240 Min	132 lbs
Height Overall (in.)	94.5"	Total Amperes	13.2	Climate Class	5
Width, Door Opening 90° (in.)	104.46"	NEMA Plug (8' cord)	15-20P	SHIPPING DETAILS	
Door Opening (in.)	35.43" x 74.8"	Total electric power	4,773 kW	Height	102"
Carts (not included)	1 GN 2/1	REFRIGERATION DATA		Width	49.2"
No. Of Doors	1	Condensing Unit Size, HP	1 1/4 x 3	Depth	69.3"
Internal Width Usable (in.)	35.2"	Refrigerant	R290	Crated Weight	1694 lbs.
Internal Depth Overall (in.)	40.9"	Capacity (BTU/HR) (113°F/-13°F)	4,579 x 3	12" Top And 3" Rear Clearance Is Required	
Internal Height Overall (in.)	74.8"	Heat Rejection (W) (14°F/95°F)	8,800		
Thickness	3.2"	Refrigerant Amount (lbs)	1.0 lbs (3x0.33 lbs)		
* BT - Evap. temp. - °C -> °F / Cond. temp. °C -> °F					

3779 Champion Blvd, Winston-Salem, NC 27105 | ph: (888) 845-9800 | fax: (800) 253-5168

Sales@VictoryRefrigeration.com | VictoryRefrigeration.com

Rev. 10/30/25 Printed in U.S.A.

