

**SUPERMARKET  
REFRIGERATION**

**VITLIFE**  
**Commercial Refrigeration**

2025

- *MULTIDECK-PLUG IN* 3-11
- *SERVE OVER COUNTER-PLUG IN* 12-20
- *ISLAND FREEZER & DUAL TEMPERATURE-PLUG IN* 21-25
- *PROMOTION DISPLAY* 26-28
- *BAKERY DISPLAY CASE* 29-34
- *VERTICAL DISPLAY CHILLER/FREEZER* 35-37

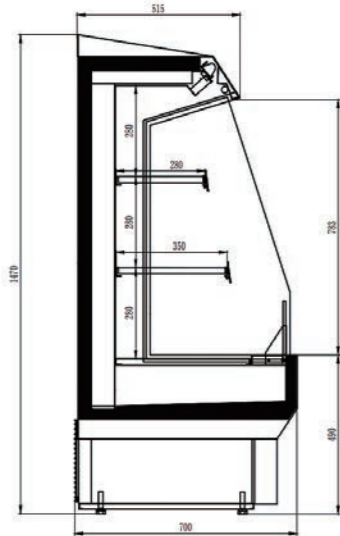
# MUTIDECK-PLUG IN



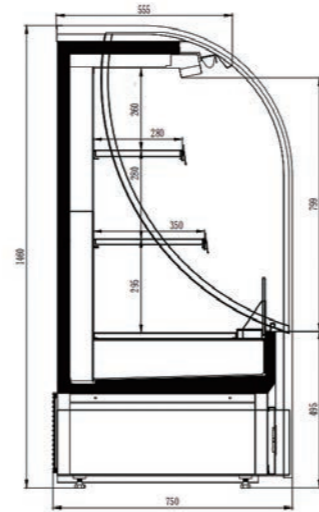
**VITLIFE**  
Commercial Refrigeration  
**MULTIDECK-PLUG IN**  
MINI DISPLAY CABINET



VKMD-P0770S



VKMD-P0775S



**Optional Features**

- 1.Optional Hi-Humidity condensate pan with heater.
- 2.Additional shelving.
- 3.Leg and caster kits.

**Standard Features**

- 1.KMD-P0770S top-mounted LED light and KMD-P0775S frame lighting.
- 2.Air curtain.
- 3.Leg levelers.
- 4.Ideal for impuls sales at the cash desk.
- 5.Small size showcase but bigger display area and storage space(120 pcs canned Coca-Cola).

Model	External Dimension(W*D*H)(INCH)			Temperature Range(°F)	Effective Volume(C.F)	Display Area(M <sup>2</sup> )	Input Power(W)	Refrigerant	40'container loading(PCS)
VKMD-P0770S	26	27.6	57.9	30.2-44.6	5.3	1	700	R290	47
VKMD-P0775S	26	29.5	57.5	30.2-44.6	5.3	0.8	700	R290	42

**VITLIFE**  
Commercial Refrigeration  
**MULTIDECK-PLUG IN**  
MINI DISPLAY CABINET



VKMD-P0550SC



**Standard Features**

- 1.Mini design suit for Checkout counter and convenience store.
- 2.Small size showcase but bigger display area and storage space(72 pcs canned Coca-Cola)
- 3.With Air curtain.
- 4.Leg levelers

**Optional Features**

1. Optional Hi-Humidity condensate pan with heater.
- 2.Additional shelves.
- 3.Leg and caster kits.

Model	External Dimension(W*D*H)(INCH)			Temperature Range(°F)	Effective Volume(C.F)	Display Area(M <sup>2</sup> )	Input Power(W)	Refrigerant	40'Container loading(PCS)
VKMD-P0550S	19.7	19.7	53.3	30.2-44.6	5.3	0.76	665	R290	84
VKMD-P0550SC	19.7	19.7	53.3	30.2-44.6	3.1	0.76	665	R290	84

Remark: C: With Canopy

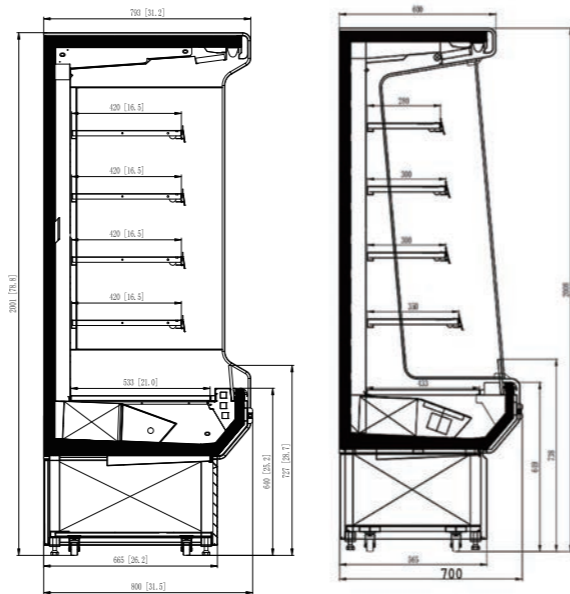
## MULTIDECK-PLUG IN AMERICAN STYLE OPEN MULTIDECK



VKMD-P1370U



VKMD-P1370UC  
Remark: C: With Canopy



### Standard Features

1. Ideal for impulse sales at the cash desk
2. Increased product visibility with narrow canopy and glass view end walls.
3. Transparent Air curtain.
4. Leg levelers

### Optional Features

1. Additional shelf.
2. Stainless steel exterior&interior or choice of exterior&interior colors.
3. Optional solid end walls with inside mirror.
4. High duty wheels with brakes.

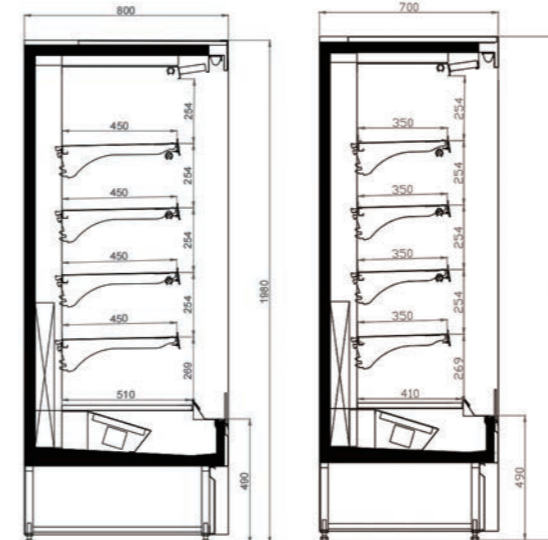
Model	External Dimension(W*D*H)(INCH)			Temperature Range(°F)	Effective Volume(C.F)	Display Area(M²)	Input Power(W)	Refrigerant	40'Container loading(PCS)
VKMD-P1070U/UC	39.4	27.6	78.7	30.2-44.6	13.9	2.23	805	R290	33
VKMD-P1370U/UC	51.8	27.6	78.7	30.2-44.6	18.6	2.69	2650	R290	25
VKMD-P1570U/UC	59.8	27.6	78.7	30.2-44.6	21.6	2.99	2780	R290	21
VKMD-P2070U/UC	76.4	27.6	78.7	30.2-44.6	27.9	3.6	3250	R290	16
VKMD-P2670U/UC	101	27.6	78.7	30.2-44.6	37.3	4.51	3840	R404A	12
VKMD-P1080U/UC	39.4	31.5	78.7	30.2-44.6	17.3	2.5	805	R290	28
VKMD-P1380U/UC	51.8	31.5	78.7	30.2-44.6	23.1	2.96	2650	R290	22
VKMD-P1580U/UC	59.8	31.5	78.7	30.2-44.6	26.9	3.27	2780	R290	15
VKMD-P2080U/UC	76.4	31.5	78.7	30.2-44.6	34.6	3.9	3250	R290	14
VKMD-P2680U/UC	101	31.5	78.7	30.2-44.6	46.2	4.83	3840	R404A	8

Remark: C: With Canopy

## MULTIDECK-PLUG IN EUROPEAN STYLE OPEN MULTIDECK



VKMD-P1370EC  
Remark: C: With Canopy



VKMD-P1370E

### Standard Features

1. Pull out condensing unit slides out for easy cleaning and maintenance.
2. Increased product visibility with lower front.
3. Hi-humidity condensate pan with PTC heater
4. LED interior cabinet lighting and under shelf LED interior lighting
5. Transparent Air curtain.
6. Leg levelers

### Optional Features

1. Additional shelves.
2. Stainless steel exterior&interior or choice of exterior&interior colors.
3. Optional solid end walls with inside mirror.
4. High duty wheels with brake.

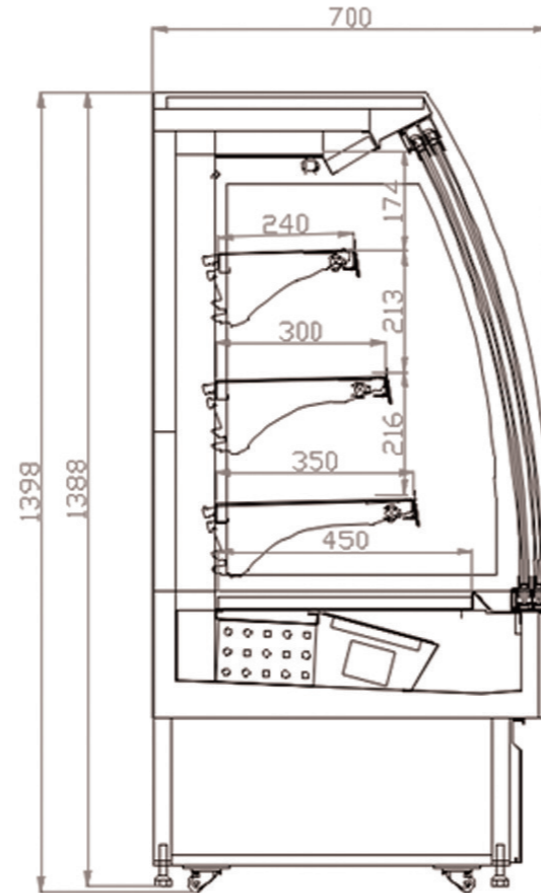
Model	External Dimension(W*D*H)(INCH)			Temperature Range(°F)	Effective Volume(C.F)	Display Area(M²)	Input Power(W)	Refrigerant	40'Container loading(PCS)
VKMD-P1070E/EC	39.4	27.6	78.7	30.2-44.6	15.5	2.3	924	R290	33
VKMD-P1370E/EC	51.8	27.6	78.7	30.2-44.6	21.0	2.7	1245	R290	25
VKMD-P1570E/EC	59.8	27.6	78.7	30.2-44.6	24.5	3	1455	R290	21
VKMD-P2070E/EC	76.4	27.6	78.7	30.2-44.6	31.5	3.6	1875	R290	16
VKMD-P2670E/EC	101	27.6	78.7	30.2-44.6	42.0	4.5	2499	R404A	12
VKMD-P1080E/EC	39.4	31.5	78.7	30.2-44.6	19.8	2.5	1176	R290	28
VKMD-P1380E/EC	51.8	31.5	78.7	30.2-44.6	26.5	2.9	1575	R290	22
VKMD-P1580E/EC	59.8	31.5	78.7	30.2-44.6	30.8	3.2	1833	R290	15
VKMD-P2080E/EC	76.4	31.5	78.7	30.2-44.6	39.7	3.8	2362	R290	14
VKMD-P2680E/EC	101	31.5	78.7	30.2-44.6	53	4.7	3150	R404A	8

Remark: C: With Canopy

## SEMI MULTIDECK-PLUG IN OPEN MULTIDECK



VKMD-P0970SR



### Standard Features

1. Ventilated cooling, Better performance
2. Copper fine pipe evaporator fan cooling.
3. Leg levelers.

### Optional Features

1. Exterior color option.
2. High duty wheels with brake.
3. Optional shelf

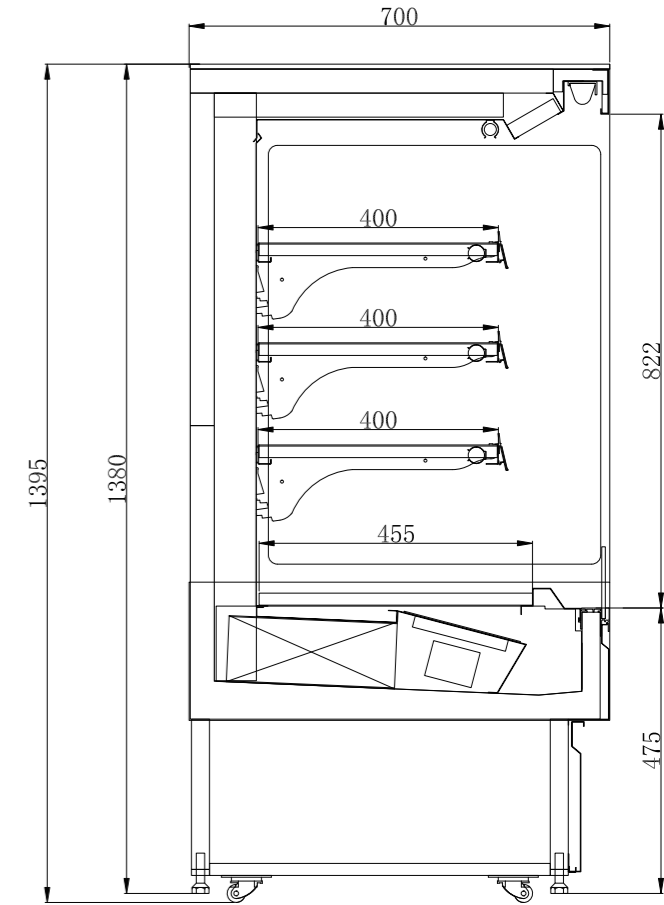
Model	External Dimension(W*D*H)(INCH)			Temperature Range(°F)	Effective Volume(C.F)	Display Area(M <sup>2</sup> )	Input Power(W)	Refrigerant	40'Container loading(PCS)
VKMD-P0970SR	35.4	27.6	54.9	30.2-44.6	7.6	1.38	240	R290	28
VKMD-P1270SR	47.2	27.6	54.9	30.2-44.6	10.1	1.83	240	R290	23
VKMD-P1570SR	59.1	27.6	54.9	30.2-44.6	12.5	2.28	240	R290	21

Remark: R: Round side panel

## SEMI MULTIDECK-PLUG IN OPEN MULTIDECK



VKMD-P0970



### Standard Features

1. Ventilated cooling, Better performance
2. Copper fine pipe evaporator fan cooling.
3. Leg levelers.

### Optional Features

1. Exterior color option.
2. High duty wheels with brake.
3. Optional shelf

Model	External Dimension(W*D*H)(INCH)			Temperature Range(°F)	Effective Volume(C.F)	Display Area(M <sup>2</sup> )	Input Power(W)	Refrigerant	40'Container loading(PCS)
VKMD-P0970SS	35.4	27.6	54.9	30.2-44.6	7.6	1.38	240	R290	28
VKMD-P1270SS	47.2	27.6	54.9	30.2-44.6	10.1	1.83	240	R290	23
VKMD-P1570SS	59.1	27.6	54.9	30.2-44.6	12.5	2.28	240	R290	21

Remark: S: Straight side panel

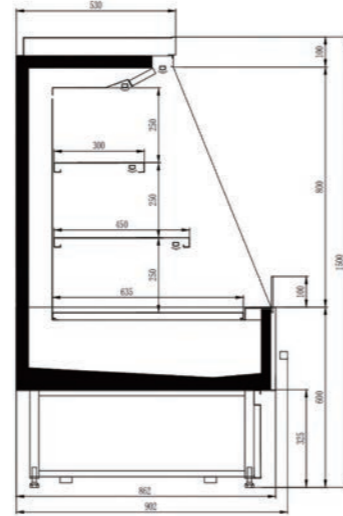
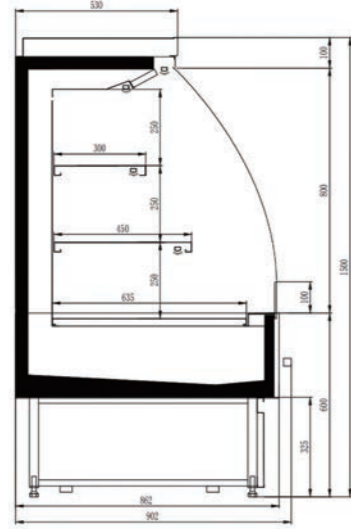
**VITLIFE**  
Commercial Refrigeration  
**SEMI MULTIDECK-PLUG IN**  
OPEN MULTIDECK



VKMD-P2091SR



VKMD-P2691SS



**Standard Features**

- 1.LED interior cabinet lighting and under shelf LED interior lighting..
- 2.Leg levelers

**Optional Features**

- 1.Additional shelves.
- 2.Stainless steel exterior&interior or choice of exterior&interior colors.
- 3.Optional solid end walls with inside mirror.
- 4.High duty wheels with brakes.
- 5.Optional for glass shelves.

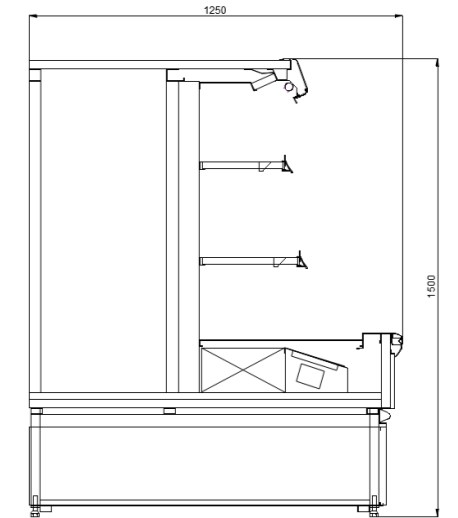
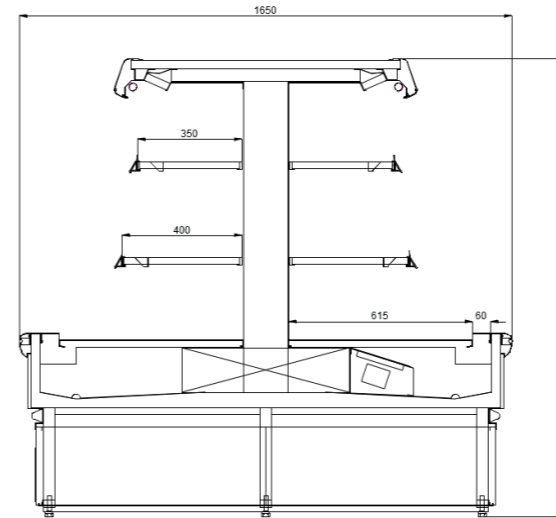
Model	External Dimension(W*D*H)(INCH)			Temperature Range(°F)	Effective Volume(C.F)	Display Area(M²)	Input Power(W)	Refrigerant	40'Container loading(PCS)
VKMD-P1391SR	52.4	35.6	59.1	30.2-44.6	12.4	1.5	1450	R290	16
VKMD-P2091SR	77	35.6	59.1	30.2-44.6	18.4	1.92	1650	R290	11
VKMD-P2691SR	101.6	35.6	59.1	30.2-44.6	24.7	2.35	2000	R290	8
VKMD-P1391SS	52.4	35.6	59.1	30.2-44.6	12.4	1.5	1450	R290	16
VKMD-P2091SS	77	35.6	59.1	30.2-44.6	18.4	1.92	1650	R290	11
VKMD-P2691SS	101.6	35.6	59.1	30.2-44.6	24.7	2.35	2000	R290	8

Remark: SR: Round side panel  
SS: Straight side panel

**VITLIFE**  
Commercial Refrigeration  
**SEMI MULTIDECK-PLUG IN**  
RING MULTIDECK



VKMD-P1712RJ



**Standard Features**

- 1.Easy to service with slide out air-cooled condensing unit.
- 2.LED interior cabinet lighting and under shelf LED interior lighting.
- 3.Transparent Air curtain.
- 4.Leg levelers.
- 5.Glass shelves.

**Optional Features**

- 1.Optional solid end walls with inside mirror.
- 2.High duty wheels with brakes.

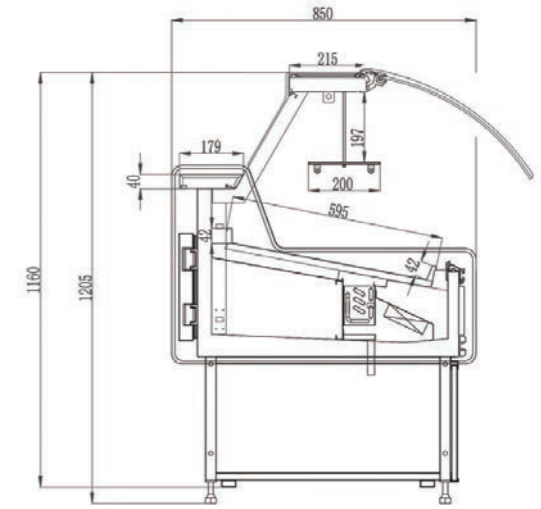
Model	External Dimension(W*D*H)(INCH)			Temperature Range(°F)	Effective Volume(C.F)	Display Area(M²)	Input Power(W)	Refrigerant	40'Container loading(PCS)
VKMD-P1712RJ	66.1	45.7	55.5	39.2-53.6	29.0	3.15	2725	R404A	9
VKMD-P2512RJ	98.4	65.0	55.5	39.2-53.6	52.3	5.6	4850	R404A	4
VKMD-P1411RI	55.3	40.4	55.5	39.2-53.6	18.4	2.7	2035	R404A	14

**SERVE OVER COUNTER-PLUG IN**

**SERVE OVER COUNTER-PLUG IN**



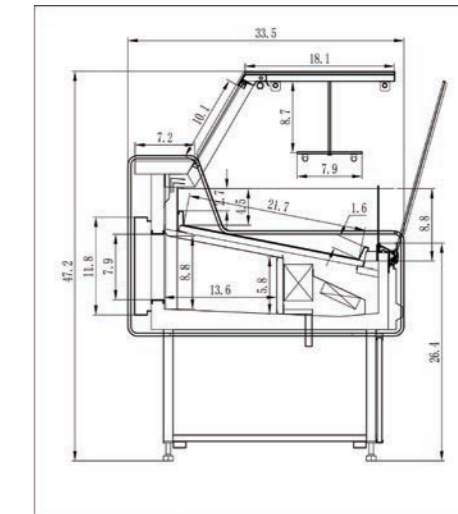
VKSC-P2508RCC



C-type, glass bottom openable



VKSC-P2508SCD



D-type, glass top openable

**Standard Features**

- 1.Stainless steel exterior&interior or choice of exterior&interior colors.
- 2.Added air duct design to make sure foods well cooled.
- 3.Refrigerated under storage with doors.
- 4.LED light mounted on top.
- 5.Front glass can be open

**Optional Features**

- 1.High duty wheels with brakes.
- 2.Worktop in Marble.
- 3.Joinable to make a line or different angle.
- 4.Intermediate glass shelf.
- 5.Worktop in stainless steel.
- 6.Leg levelers.

Model	External Dimension(W*D*H)(INCH)			Temperature Range(°F)	Effective Volume(C.F)	Display Area(M <sup>2</sup> )	Input Power(W)	Refrigerant	40'Container loading(PCS)
VKSC-P1208RCC	47.2	33.5	48.4	32-41	7.1	0.74	260	R290	44
VKSC-P1808RCC	70.9	33.5	48.4	32-41	10.9	1.13	440	R290	26
VKSC-P2508RCC	101.6	33.5	48.4	32-41	15.9	1.64	540	R290	8
VKSC-P1208SCD	47.2	33.5	48.4	32-41	7.1	0.74	260	R290	44
VKSC-P1808SCD	70.9	33.5	48.4	32-41	10.9	1.13	440	R290	26
VKSC-P2508SCD	101.6	33.5	48.4	32-41	15.9	1.64	540	R290	8

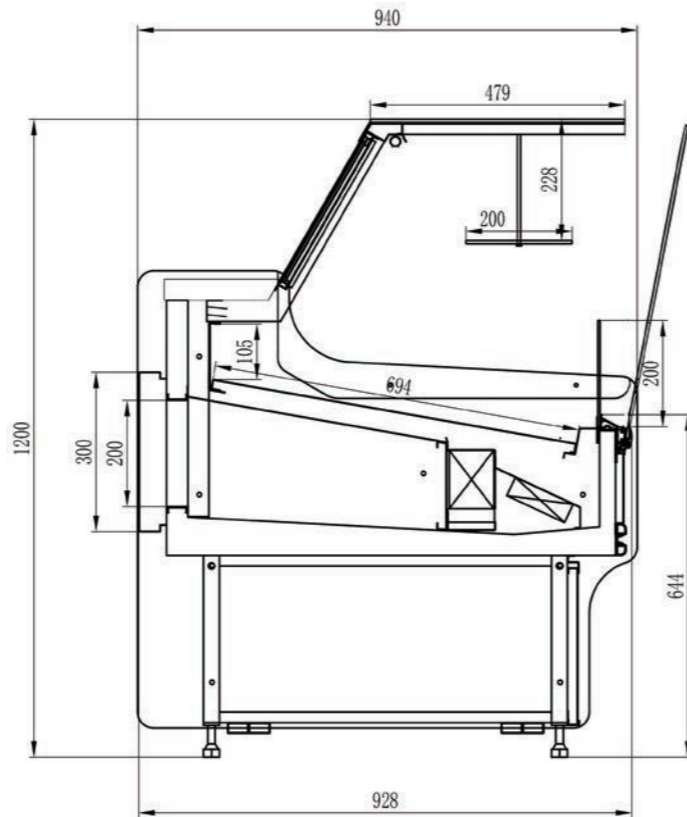


**SERVE OVER COUNTER-PLUG IN**



Water tank for cleaning shelves and inner cabinet, Easy to pull out to pour water

Evaporator water pan



**Standard Features**

1. Intermediate glass shelf.
2. Worktop in stainless steel.
3. Added air duct design to make sure foods well cooled.
4. Refrigerated under storage with doors.
5. LED light mounted on top.
6. Leg levelers.

**Optional Features**

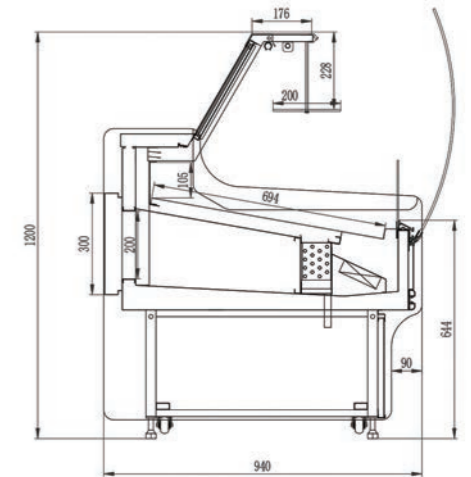
1. Option for Front anti-condensation fan .
2. With sliding back double layers' tempered glass doors
3. Stainless steel exterior&interior or choice of exterior&interior colors.
4. High duty wheels with brake.
5. Worktop in Marble.
6. Joinable to make a line or different angle.

Model	External Dimension(W*D*H)(INCH)			Temperature Range(°F)	Effective Volume(C.F)	Display Area(M <sup>2</sup> )	Input Power(W)	Refrigerant	40'Container loading(PCS)
VKSC-P1309SCD	52.4	37.0	47.2	32-41	8.8	0.93	260	R290	32
VKSC-P1509SCD	62.2	37.0	47.2	32-41	10.2	1.06	430	R290	28
VKSC-P2009SCD	77	37.0	47.2	32-41	13.4	1.38	440	R290	24
VKSC-P2609SCD	101.6	37.0	47.2	32-41	17.7	1.83	540	R290	16

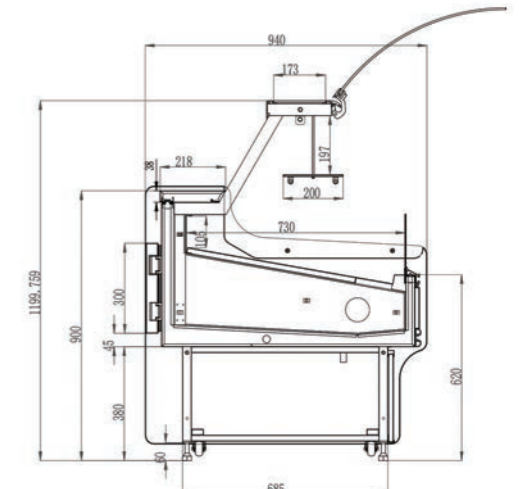
**SERVE OVER COUNTER-PLUG IN**



VKSC-P2009RCC



D-type, glass top openable



C-type, glass bottom openable

**Standard Features**

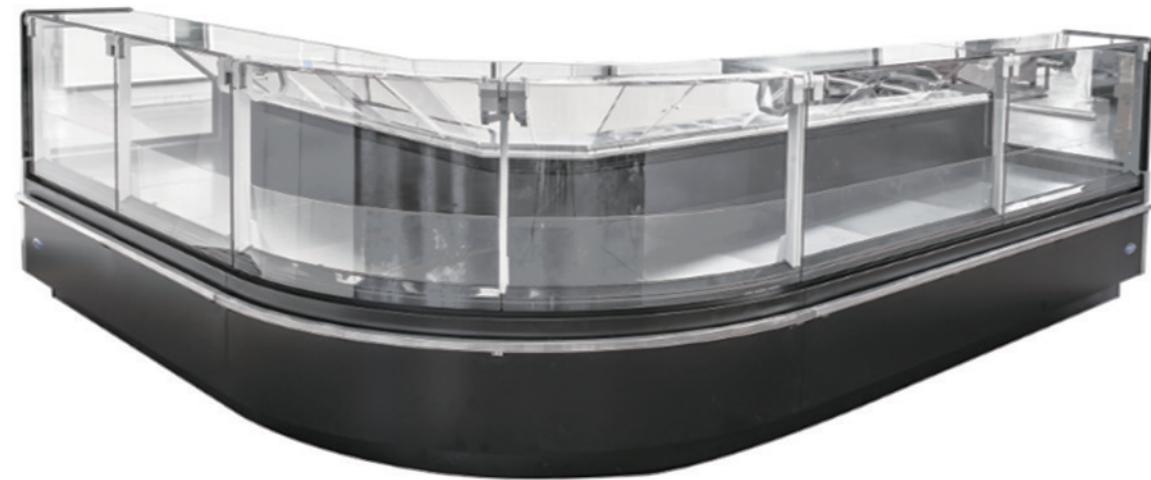
1. Intermediate glass shelf.
2. Worktop in stainless steel.
3. Added air duct design to make sure foods well cooled.
4. Refrigerated under storage with doors.
5. LED light mounted on top.
6. Leg levelers.
7. Stainless steel exterior&interior or choice of exterior&interior colors.
8. High duty wheels with brake.

**Optional Features**

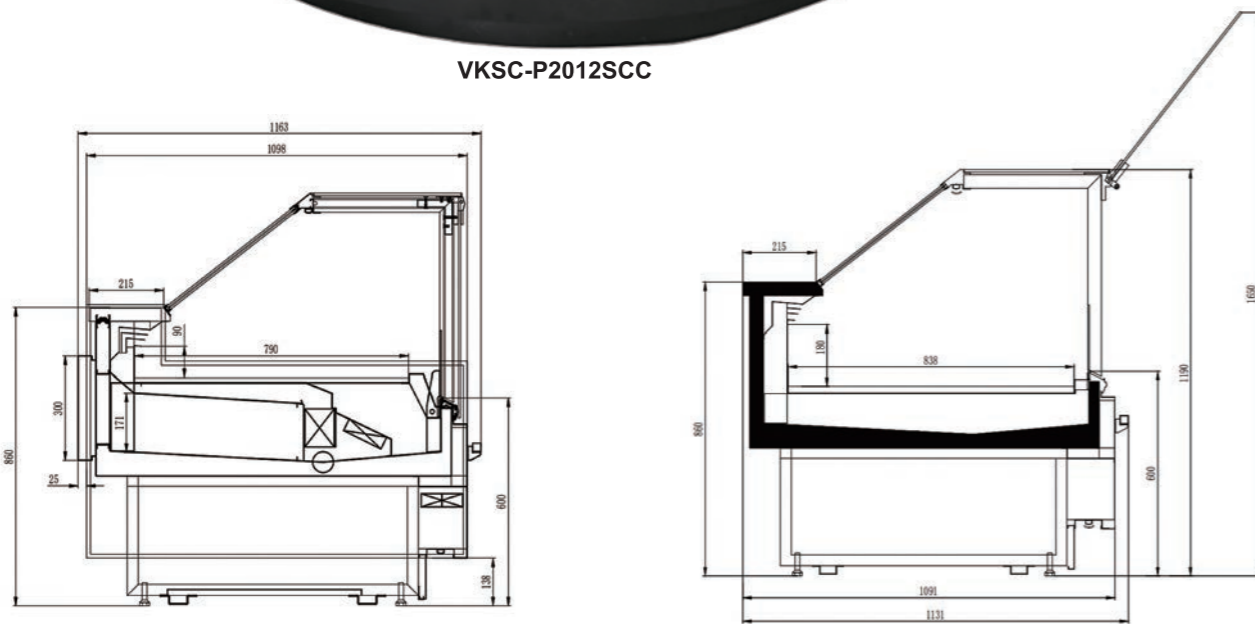
1. Worktop in Marble.
2. Joinable to make a line or different angle.

Model	External Dimension(W*D*H)(INCH)			Temperature Range(°F)	Effective Volume(C.F)	Display Area(M <sup>2</sup> )	Input Power(W)	Refrigerant	40'Container loading(PCS)
VKSC-P1309RCC	52.4	37	47.2	32-41	8.8	0.93	260	R290	32
VKSC-P1509RCC	62.2	37	47.2	32-41	10.2	1.06	430	R290	28
VKSC-P2009RCC	77	37	47.2	32-41	13.4	1.38	440	R290	24
VKSC-P2609RCC	101.6	37	47.2	32-41	17.7	1.83	540	R290	16
VKSC-P1309RCD	52.4	37	47.2	32-41	8.8	0.93	260	R290	32
VKSC-P1509RCD	62.2	37	47.2	32-41	10.2	1.06	430	R290	28
VKSC-P2009RCD	77	37	47.2	32-41	13.4	1.38	440	R290	24
VKSC-P2609RCD	101.6	37	47.2	32-41	17.7	1.83	540	R290	16

**SERVE OVER COUNTER-PLUG IN**



VKSC-P2012SCC



**Standard Features**

1. Worktop in stainless steel.
2. Joinable to make a line or different angle.
3. Flate glass design.
4. LED light mounted on top.
5. Leg levelers.

**Optional Features**

1. Worktop in Marble.
2. Front anti-condensation fan.
3. With storage room.

Model	External Dimension(W*D*H)(INCH)			Temperature Range(°F)	Effective Volume(C.F)	Display Area(M <sup>2</sup> )	Input Power(W)	Refrigerant	40' Container loading(PCS)
VKSC-P1312SCC	52.4	44.5	46.9	30.2-41	6.1	1.12	665	R290	18
VKSC-P2012SCC	76.4	44.5	46.9	30.2-41	9.1	1.6	710	R290	18
VKSC-P2612SCC	101.6	44.5	46.9	30.2-41	12.2	2.08	720	R290	8
VKSC-P3812SCC	150.8	44.5	46.9	30.2-41	18.3	3.05	116	R290	6
VKSC-P1310SCC	52.4	37.4	46.9	30.2-41	5.2	0.94	665	R290	32
VKSC-P2010SCC	76.4	37.4	46.9	30.2-41	7.8	1.35	710	R290	28
VKSC-P2610SCC	101.6	37.4	46.9	30.2-41	10.4	1.75	720	R290	24
VKSC-P3810SCC	150.8	37.4	46.9	30.2-41	15.5	2.56	1160	R290	16

**GRAVITY COIL SERVICE CASE**

**Fresh meat counter**



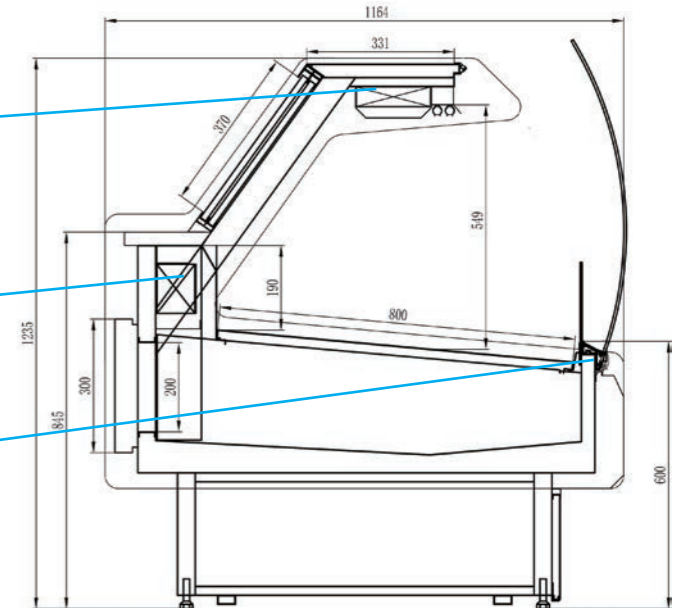
**With two Evaporator**

**Static cooling system**

Gravity coil refrigeration systems provide high humidity environment for exceptional preservation of meats and deli products.

**Middle Evaporator**

**With Front Airflow**



**Standard Features**

1. Worktop in stainless steel.
2. Leg levelers.
3. With storage room.
4. Front glass openable.

**Optional Features**

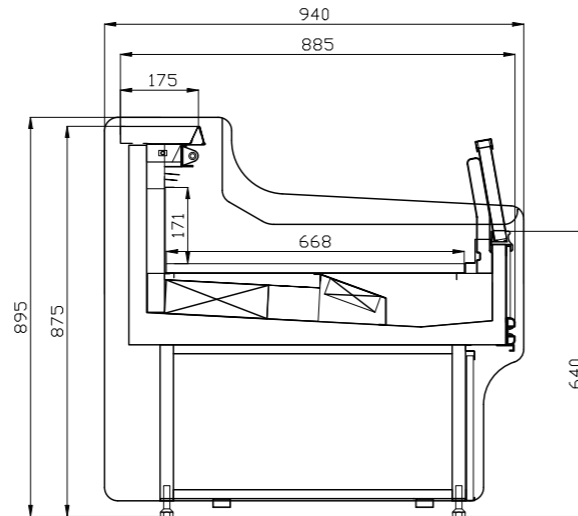
1. Worktop in Marble.

Model	External Dimension(W*D*H)(INCH)			Temperature Range(°F)	Effective Volume(C.F)	Display Area(M <sup>2</sup> )	Refrigerant	40' Container loading(PCS)
VKSC-P1312RCU	52.4	45.8	48.6	28.4-35.6	7.1	0.88	R290	18
VKSC-P2012RCU	77	45.8	48.6	28.4-35.6	10.6	1.16	R290	18
VKSC-P2612RCU	101.6	45.8	48.6	28.4-35.6	14.1	1.45	R290	8

**SELF SERVICE COUNTER-PLUG IN**



VKSC-P2009RF



**Standard Features**

- 1.Stainless steel exterior&interior or choice of exterior&interior colors.
- 2.High duty wheels with brakes.
- 3.Exterior steel sheet prepainted and interior stainless steel.
- 4.Evaporator is epoxy coated to eliminate the potential of corrosion.
- 5.Leg levelers.
- 6.Joinable to make a line or different angle.
- 7.Added air duct design to make sure foods well cooled.

**Optional Features**

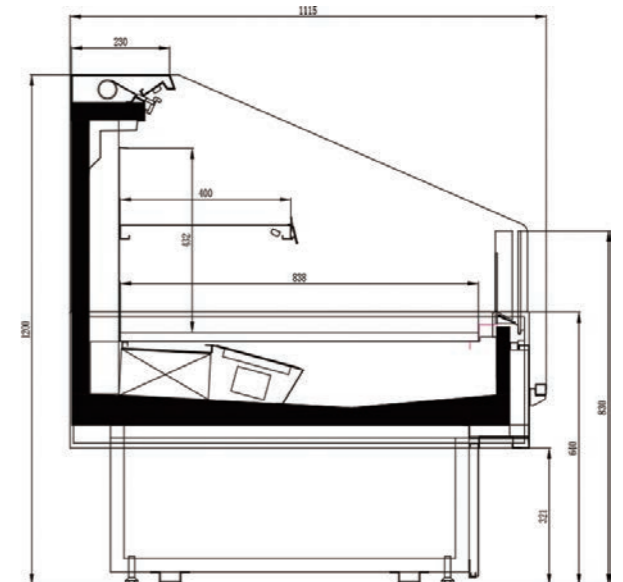
- 1.Worktop in Marble.
- 2.With night curtain.
- 3.With light

Model	External Dimension(W*D*H)(INCH)			Temperature Range(°F)	Effective Volume(C.F)	Display Area(M <sup>2</sup> )	Input Power(W)	Refrigerant	40'Container loading(PCS)
VKSC-P1309RF	52.4	37	34.3	28.4-35.6	5.7	1.15	260	R290	32
VKSC-P1509RF	62.2	37	34.3	28.4-35.6	6.4	1.3	430	R290	28
VKSC-P2009RF	77	37	34.3	28.4-35.6	8.5	1.59	440	R290	24
VKSC-P2609RF	101.6	37	34.3	28.4-35.6	320	2.28	540	R290	16

**SELF SERVICE COUNTER-PLUG IN**



VKSC-P2612SFB



**Standard Features**

- 1.Leg levelers.
- 2.With night curtain.

**Optional Features**

- 1.Stainless steel exterior&interior or choice of exterior&interior colors.
- 2.High duty wheels with brakes.
- 3.Worktop in Marble.
- 4.Joinable to make a line or different angle.
- 5.Optional Front bottom atmosphere light.

Model	External Dimension(W*D*H)(INCH)			Temperature Range(°F)	Effective Volume(C.F)	Display Area(M <sup>2</sup> )	Input Power(W)	Refrigerant	40'Container loading(PCS)
VKSC-P1312SFB	52.4	44.5	47.2	30.2-44.6	9.5	1.32	1380	R290	18
VKSC-P2012SFB	76.4	44.5	47.2	30.2-44.6	14.3	1.98	1560	R290	18
VKSC-P2612SFB	101.6	44.5	47.2	30.2-44.6	19.1	2.64	1900	R290	8
VKSC-P3812SFB	150.8	44.5	47.2	30.2-44.6	25.4	3.96	2660	R290	6

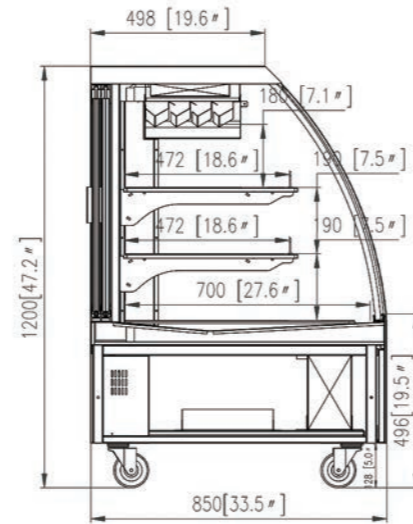
**GRAVITY COIL DELI CASE**



VKSC-P0908RCUS



VKSC-P0908RCU



**Standard Features**

1. Stainless steel exterior and interior.
2. Gravity coil refrigeration systems provide high humidity environment for exceptional preservation of meats and deli products.
3. Top mounted LED light.
4. High duty wheels with brake.
5. Sliding back door.
6. Automatic defrost.

**Optional Features**

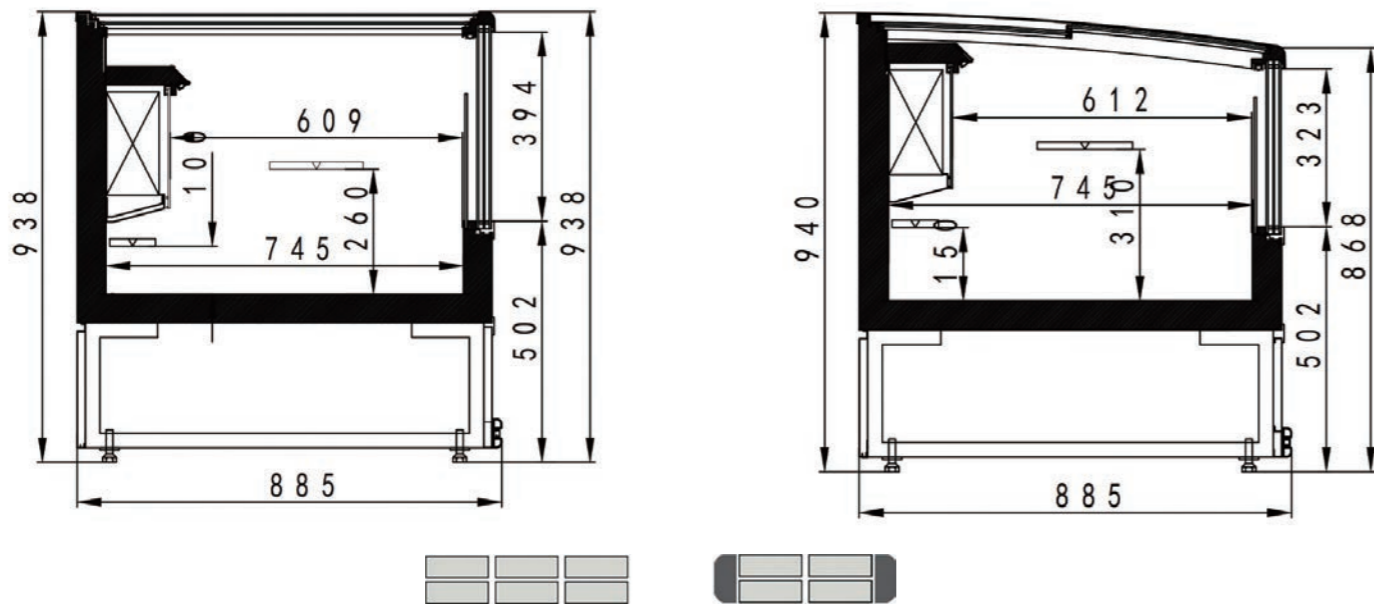
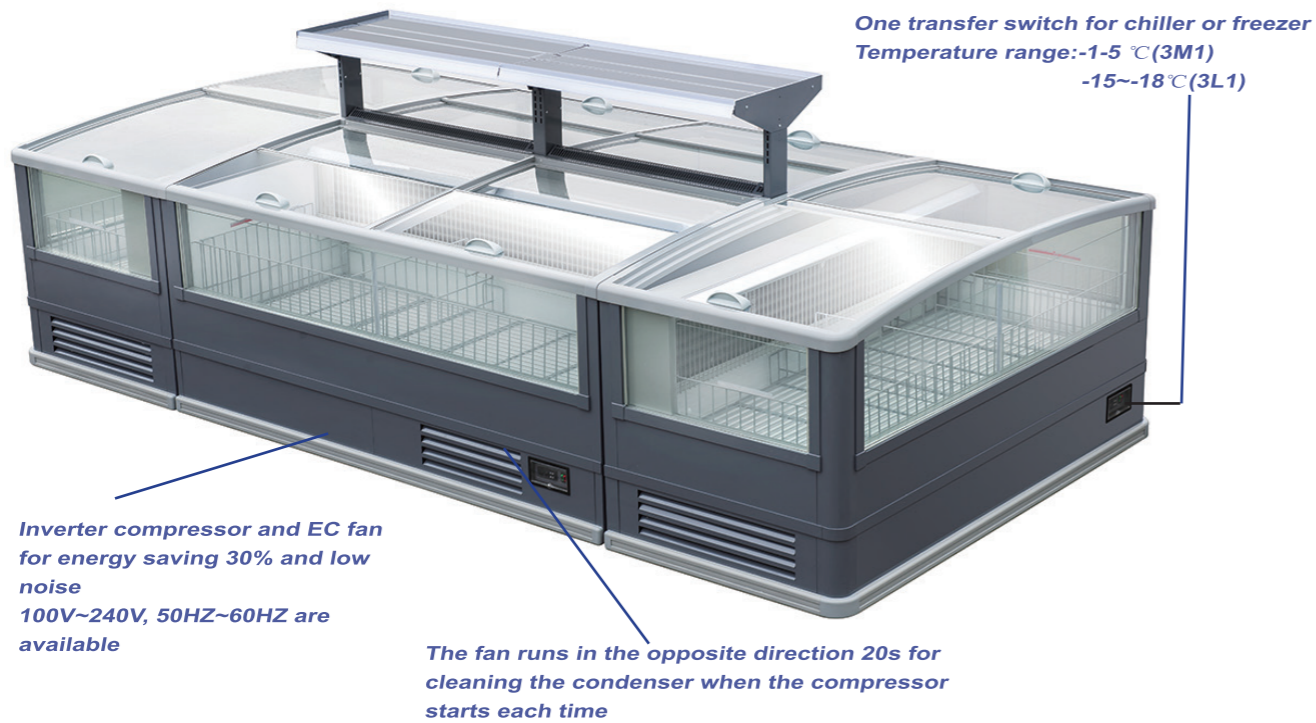
1. Optional for exterior painted.
2. Additional shelves.

Model	External Dimension(W*D*H)(INCH)			Temperature Range(°F)	Effective Volume(C.F)	Display Area(M <sup>2</sup> )	Input Power(W)	Refrigerant	40' Container loading(PCS)
VKSC-P0908RCU	36.2	33.5	47.2	32-44.6	10.6	0.7	235	R290	52
VKSC-P1208RCU	47.2	33.5	47.2	32-44.6	14.1	0.9	260	R290	44
VKSC-P1508RCU	59.1	33.5	47.2	32-44.6	17.8	1.1	360	R290	28
VKSC-P1808RCU	70.9	33.5	47.2	32-44.6	21.5	1.4	392	R290	24
VKSC-P0908RCUS	36.2	33.5	47.2	32-44.6	10.6	0.7	235	R290	52
VKSC-P1208RCUS	47.2	33.5	47.2	32-44.6	14.1	0.9	260	R290	44
VKSC-P1508RCUS	59.1	33.5	47.2	32-44.6	17.8	1.1	360	R290	28
VKSC-P1808RCUS	70.9	33.5	47.2	32-44.6	21.5	1.4	392	R290	24

**ISLAND FREEZER-PLUG IN**



**ISLAND FREEZER-PLUG IN**

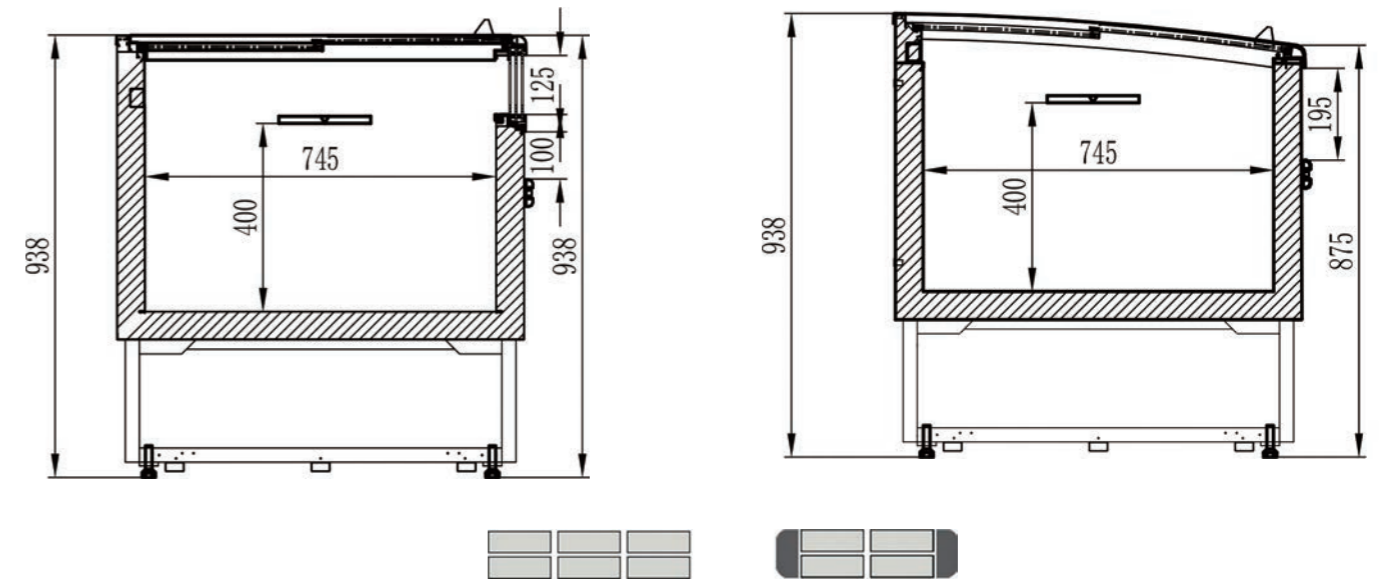


**Benefits**

- 1.Low-E glass with heater to prevent condensation.
- 2.Exterior copper aluminum fin evaporator, better performance,and truly frost-free.
- 3.Self evaporating drip tray.
- 4.Triple toughened glass for better display area and energy saving.

Model	External Dimension(W*D*H)(INCH)			Temperature Range(°F)	Effective Volume(C.F)	Display Area(M <sup>2</sup> )	Input Power(W)	Refrigerant	40'Container loading(PCS)
VKIF-P1409FG	53.5	34.8	36.9	23~41/-0.4~5	10.6	0.88	420	R290	32
VKIF-P2009FG	79.1	34.8	36.9	23~41/-0.4~5	15.9	1.36	600	R290	22
VKIF-P2509FG	98.7	34.8	36.9	23~41/-0.4~5	20.3	1.73	820	R290	16
VKIF-P1909FG(End unit)	74	34.8	36.9	23~41/-0.4~5	10.6	1.26	690	R290	24

**ISLAND FREEZER-PLUG IN**



**Benefits**

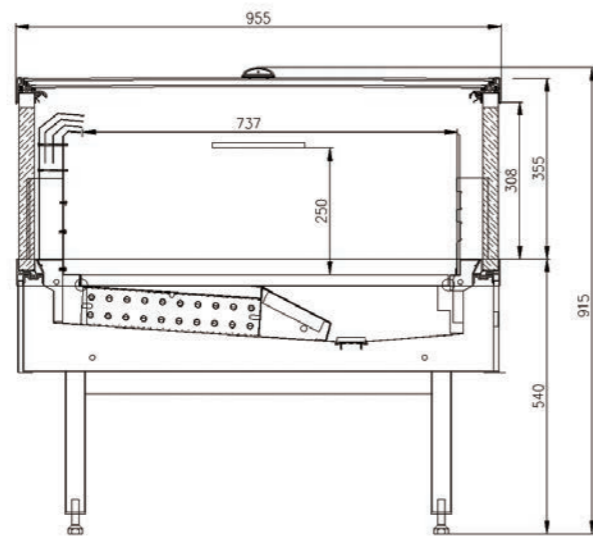
- 1.Exterior copper aluminum fin consider, better cooling effect,You can combine them as you want.
- 2.New door glass design(radian)and bigger display area.
- 3.Square storage space, more convenient placement, storage space is larger.

Model	External Dimension(W*D*H)(INCH)			Temperature Range(°F)	Effective Volume(C.F)	Display Area(M <sup>2</sup> )	Input Power(W)	Refrigerant	40'Container loading(PCS)
VKIF-P1409FG-E	53.5	34.8	36.9	≤ -0.4	10.6	0.88	420	R290	32
VKIF-P2009FG-E	79.1	34.8	36.9	≤ -0.4	15.9	1.36	600	R290	22
VKIF-P2509FG-E	98.7	34.8	36.9	≤ -0.4	20.3	1.73	820	R290	16
VKIF-P1909FG-E(End unit)	74	34.8	36.9	≤ -0.4	10.6	1.26	690	R290	24

**VITLIFE**  
Commercial Refrigeration  
**DUAL TEMPERATURE**  
CHILLER/FREEZER



VKIF-P2010TG



**Standard Features**

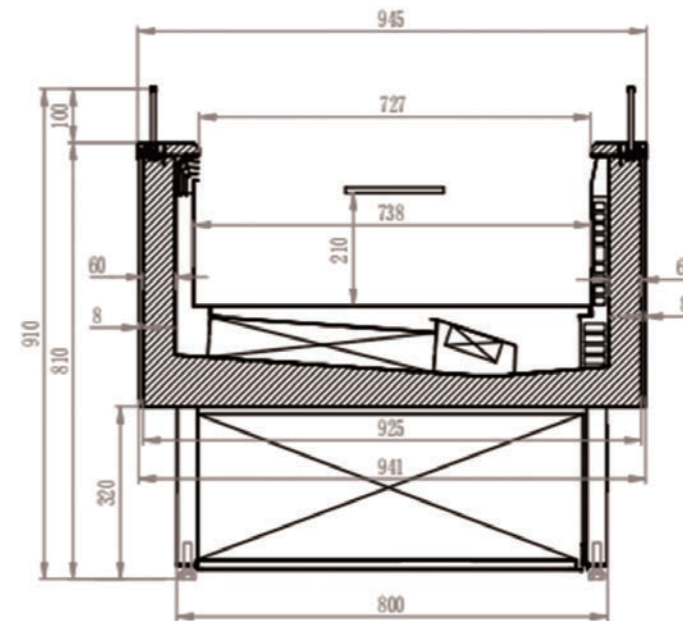
- 1.Copper fine pipe evaporator fan cooling.
- 2.Leg levelers.
- 3.All models with front glass.
- 4.Dual temperature design to meet all foods temperature requirements.
- 5.Dual temperature, chiller/freezer one- touch switching
- 6.Automatic defrost.

**Optional Features**

- 1.Exterior color option.
- 2.High duty wheels with brake.
- 3.Optional for top cover.
- 4.Joinable to make a line.

Model	External Dimension(W*D*H)(INCH)			Temperature Range(°F)	Effective Volume(C.F)	Display Area(M <sup>2</sup> )	Input Power(W)	Refrigerant	40°Container loading(PCS)
VKIF-P1010TG	39.4	37.6	36.8	≤-0.4/30.2~41	6.1	1.51	85	R290	44
VKIF-P1510TG	59.1	37.6	36.8	≤-0.4/30.2~41	9.4	2.09	1350	R290	28
VKIF-P2010TG	78.7	37.6	36.8	≤-0.4/30.2~41	12.7	2.47	1430	R290	21
VKIF-P2510TG	98.4	37.6	36.8	≤-0.4/30.2~41	16.1	2.85	1580	R290	16

**VITLIFE**  
Commercial Refrigeration  
**DUAL TEMPERATURE**  
CHILLER/FREEZER



**Standard Features**

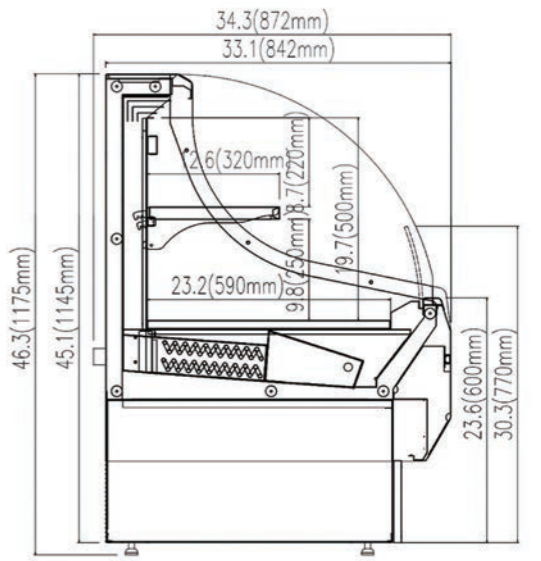
- 1.Copper fine pipe evaporator fan cooling.
- 2.Leg levelers.
- 3.All models with front glass.
- 4.Dual temperature design to meet all foods temperature requirements.
- 5.Dual temperature, chiller/freezer one- touch switching
- 6.Automatic defrost.

**Optional Features**

- 1.Exterior color option.
- 2.High duty wheels with brake.
- 3.Optional for top cover.
- 4.Joinable to make a line.

Model	External Dimension(W*D*H)(INCH)			Temperature Range(°F)	Effective Volume(C.F)	Display Area(M <sup>2</sup> )	Input Power(W)	Refrigerant	40°Container loading(PCS)
VKIF-P1010TB	39.4	37.4	36.2	≤-0.4/30.2~41	6	0.68	800	R290	36
VKIF-P1510TB	59.1	37.4	36.2	≤-0.4/30.2~41	9.2	1.03	1201	R290	26
VKIF-P2010TB	78.7	37.4	36.2	≤-0.4/30.2~41	12.4	1.4	1621	R290	20
VKIF-P2510TB	98.4	37.4	36.2	≤-0.4/30.2~41	15.5	1.78	2093	R290	16

# PROMOTION DISPLAY



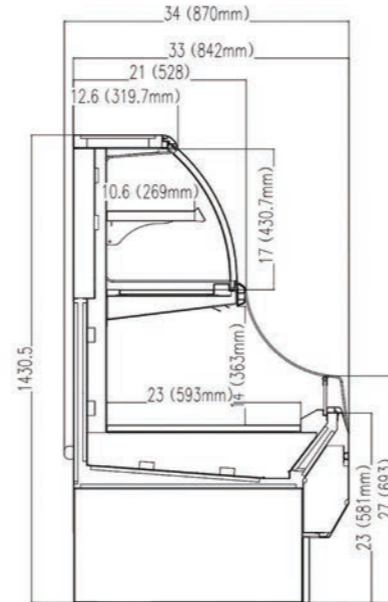
**Standard Features**

- 1.Copper fine pipe evaporator fan cooling.
- 2.Leg levelers.
- 3.Top mounted LED light.
- 4.Hi-humidity condensate pan with PTC heater.

**Optional Features**

- 1.Stainless steel exterior&interior or choice of exterior&interior colors.
- 2.High duty wheels with brakes.

Model	External Dimension(W*D*H)(INCH)			Temperature Range(°F)	Effective Volume(C.F)	Display Area(M²)	Input Power(W)	Refrigerant	40"Container loading(PCS)
VKPM-P0709CRL	28	33.1	46.3	30.2-44.6	4.9	0.44	450	R290	78
VKPM-P1009CRL	39	33.1	46.3	30.2-44.6	6.9	0.61	620	R290	52
VKPM-P1309CRL	50.8	33.1	46.3	30.2-44.6	8.9	0.8	920	R290	42
VKPM-P1609CRL	63	33.1	46.3	30.2-44.6	11.1	0.99	930	R290	28



### Standard Features

1. Automatic defrost.
2. Copper fine pipe evaporator fan cooling.
3. Leg levelers.
4. Top mounted LED light.
5. Hi-humidity condensate pan with PTC heater.
6. With night curtain.

### Optional Features

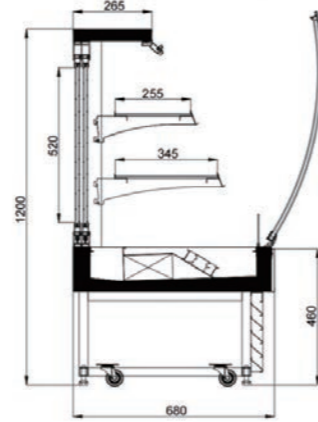
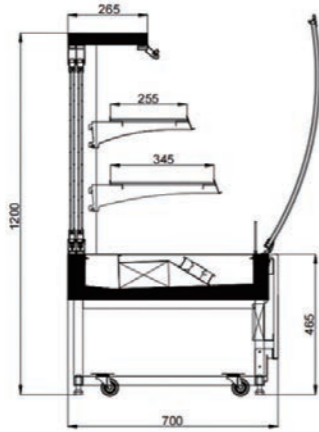
1. Stainless steel exterior&interior or choice of exterior&interior colors.
2. High duty wheels with brakes.

Model	External Dimension(W*D*H)(INCH)			Temperature Range(°F)	Effective Volume(C.F)	Display Area(M <sup>2</sup> )	Input Power(W)	Refrigerant	40" Container loading(PCS)
VKPM-P0709CRH	28	33.1	57.5	30.2-44.6/33.8-50	8.1	0.56	470	R290	39
VKPM-P1009CRH	39	33.1	57.5	30.2-44.6/33.8-50	11.2	0.78	640	R290	26
VKPM-P1309CRH	50.8	33.1	57.5	30.2-44.6/33.8-50	14.4	1	940	R290	21
VKPM-P1609CRH	63	33.1	57.5	30.2-44.6/33.8-50	18.2	1.26	950	R290	14

## BAKERY DISPLAY CASE



**VITLIFE**  
Commercial Refrigeration  
**BAKERY DISPLAY CASE**



**Optional Features**

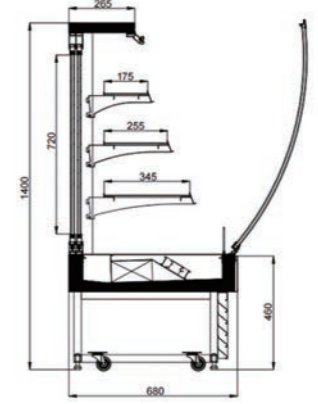
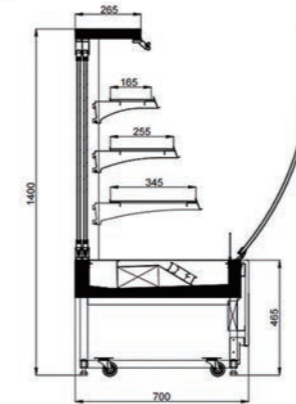
1. Additional shelves.
2. High duty wheels with brake.
3. Optional for marble.
4. Three sides air blow to aiti- condensation.

**Standard Features**

1. Black&White exterior and interior Stainless steel.
2. Automatic defrost.3.LED light top mounted+lights under shelves.
3. Double tempered glass.Front glass swings up for easy cleaning access.
4. Leg levelers

Model	External Dimension(W*D*H)(INCH)			Temperature Range(°F)	Effective Volume(C.F)	Display Area(M²)	Input Power(W)	Refrigerant	40'Container loading(PCS)
VKBD-P1070RL	37.8	27.6	47.2	35.6-46.4	6.4	1.3	360	R290	66
VKBD-1370RL	49.6	27.6	47.2	35.6-46.4	8.3	1.58	400	R290	54
VKBD-1670RL	61.4	27.6	47.2	35.6-46.4	10.2	1.86	560	R290	42
VKBD-1970RL	73.2	27.6	47.2	35.6-46.4	11.8	2.15	600	R290	36
VKBD-0968RL	35.4	26.8	47.2	35.6-46.4	6.4	1.3	360	R290	66
VKBD-1268RL	47.2	26.8	47.2	35.6-46.4	8.3	1.58	400	R290	54
VKBD-1568RL	59.1	26.8	47.2	35.6-46.4	10.2	1.86	560	R290	42
VKBD-1868RL	70.9	26.8	47.2	35.6-46.4	11.8	2.15	600	R290	36

**VITLIFE**  
Commercial Refrigeration  
**BAKERY DISPLAY CASE**



**Standard Features**

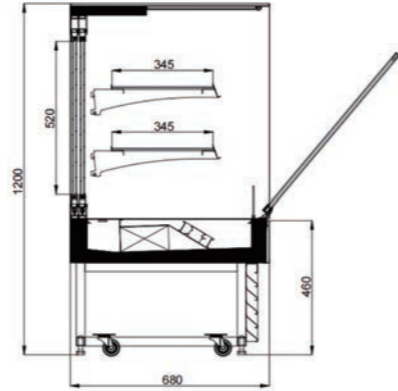
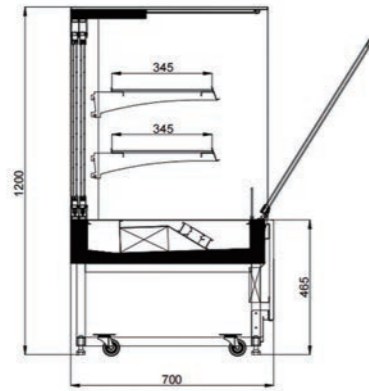
1. Black&White exterior and interior Stainless steel.
2. Automatic defrost.
3. LED light top mounted + lights under shelves.
4. Double tempered glass.Front glass swings up for easy cleaning access
5. Leg levelers

**Optional Features**

1. Additional shelves.
2. High duty wheels with brake.
3. Three sides air blow to aiti- condensation.

Model	External Dimension(W*D*H)(INCH)			Temperature Range(°F)	Effective Volume(C.F)	Display Area(M²)	Input Power(W)	Refrigerant	40'Container loading(PCS)
VKBD-1070RH	37.8	27.6	55.1	35.6-46.4	7.4	1.62	370	R290	33
VKBD-1370RH	49.6	27.6	55.1	35.6-46.4	9.9	1.96	410	R290	27
VKBD-1670RH	61.4	27.6	55.1	35.6-46.4	12.4	2.3	580	R290	21
VKBD-1970RH	73.2	27.6	55.1	35.6-46.4	14.8	2.65	620	R290	18
VKBD-0968RH	35.4	26.8	55.1	35.6-46.4	7.4	1.62	370	R290	66
VKBD-1268RH	47.2	26.8	55.1	35.6-46.4	9.9	1.96	410	R290	54
VKBD-1568RH	59.1	26.8	55.1	35.6-46.4	12.4	2.3	580	R290	42
VKBD-1868RH	70.9	26.8	55.1	35.6-46.4	14.8	2.65	620	R290	36

**VITLIFE**  
Commercial Refrigeration  
**BAKERY DISPLAY CASE**



**Standard Features**

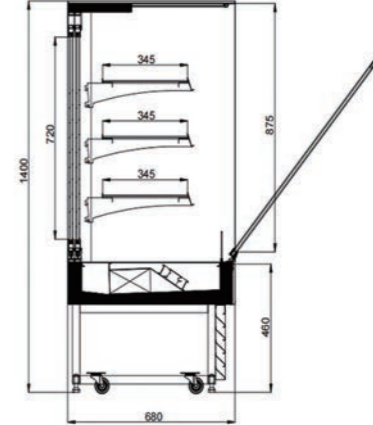
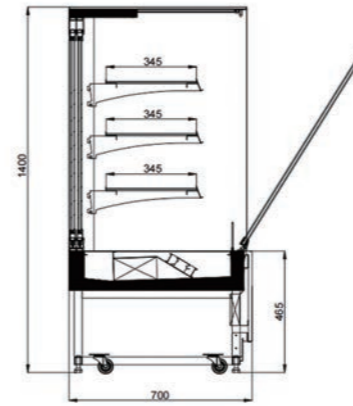
- 1.Black&White exterior and interior Stainless steel.
- 2.Automatic defrost.
- 3.LED light top mounted + lights under shelves.
- 4.Double tempered glass.Front glass swings up for easy cleaning access.
- 5.Leg levelers

**Optional Features**

- 1.Additional shelves.
- 2.High duty wheels with brake.
- 3.Optional for marble.
- 4.Three sides air blow to aiti-condensation.

Model	External Dimension(W*D*H)(INCH)			Temperature Range(°F)	Effective Volume(C.F)	Display Area(M <sup>2</sup> )	Input Power(W)	Refrigerant	40'Container loading(PCS)
VKBD-1070SL	37.8	27.6	47.2	35.6-46.4	7.4	1.45	360	R290	66
VKBD-1370SL	49.6	27.6	47.2	35.6-46.4	9.9	1.74	400	R290	54
VKBD-1670SL	61.4	27.6	47.2	35.6-46.4	12.4	2.03	560	R290	42
VKBD-1970SL	73.2	27.6	47.2	35.6-46.4	14.8	2.31	600	R290	36
VKBD-0968SL	35.4	26.8	47.2	35.6-46.4	7.4	1.45	360	R290	33
VKBD-1268SL	47.2	26.8	47.2	35.6-46.4	9.9	1.74	400	R290	27
VKBD-1568SL	59.1	26.8	47.2	35.6-46.4	12.4	2.03	560	R290	21
VKBD-1868SL	70.9	26.8	47.2	35.6-46.4	14.8	2.31	600	R290	18

**VITLIFE**  
Commercial Refrigeration  
**BAKERY DISPLAY CASE**



**Standard Features**

- 1.Black&White exterior and interior Stainless steel.
- 2.Automatic defrost.
- 3.LED light top mounted + lights under shelves.
- 4.Double tempered glass.Front glass swings. up for easy cleaning access.
- 5.Leg levelers.

**Optional Features**

- 1.Additional shelves.
- 2.High duty wheels with brakes.
- 3.Optional for marble.
- 4.Three sides air blow to aiti-condensation.

Model	External Dimension(W*D*H)(INCH)			Temperature Range(°F)	Effective Volume(C.F)	Display Area(M <sup>2</sup> )	Input Power(W)	Refrigerant	40'Container loading(PCS)
VKBD-1070SH	37.8	27.6	55.1	35.6-46.4	9.9	1.84	370	R290	33
VKBD-1370SH	49.6	27.6	55.1	35.6-46.4	13.1	2.18	410	R290	27
VKBD-1670SH	61.4	27.6	55.1	35.6-46.4	16.2	2.53	280	R290	21
VKBD-1970SH	73.2	27.6	55.1	35.6-46.4	19.1	2.87	620	R290	18
VKBD-0968SH	35.4	26.8	55.1	35.6-46.4	9.9	1.84	370	R290	33
VKBD-1268SH	47.2	26.8	55.1	35.6-46.4	13.1	2.18	410	R290	27
VKBD-1568SH	59.1	26.8	55.1	35.6-46.4	16.2	2.53	280	R290	21
VKBD-1868SH	70.9	26.8	55.1	35.6-46.4	19.1	2.87	620	R290	18



### Standard Features

- 1.Black&White exterior and interior Stainless steel.
- 2.Automatic defrost.
- 3.LED light top mounted + lights under shelves.
- 4.Double tempered glass.Front glass swings. up for easy cleaning access.
- 5.Leg levelers.

### Optional Features

- 1.Additional shelves.
- 2.High duty wheels with brakes.
- 3.Optional for marble.
- 4.Three sides air blow to aiti-condensation.

Model	External Dimension(W*D*H)(INCH)			Temperature Range(°F)	Effective Volume(C.F)	Display Area(M <sup>2</sup> )	Input Power(W)	Refrigerant	40' Container loading(PCS)
VKBD-0968SLA	35.4	26.8	47.2	35.6-46.4	7.4	1.45	360	R290	33
VKBD-1268SLA	47.2	26.8	47.2	35.6-46.4	9.9	1.74	400	R290	27
VKBD-1568SLA	59.1	26.8	47.2	35.6-46.4	12.4	2.03	560	R290	21
VKBD-1868SLA	70.9	26.8	47.2	35.6-46.4	14.8	2.31	600	R290	18
VKBD-0968SHA	35.4	26.8	55.1	35.6-46.4	9.9	1.84	370	R290	33
VKBD-1268SHA	47.2	26.8	55.1	35.6-46.4	13.1	2.18	410	R290	27
VKBD-1568SHA	59.1	26.8	55.1	35.6-46.4	16.2	2.53	280	R290	21
VKBD-1868SHA	70.9	26.8	55.1	35.6-46.4	19.1	2.87	620	R290	18

## VERTICAL DISPLAY CHILLER/FREEZER



**VERTICAL DISPLAY CHILLER**



VKDC-P0673TG



VKDC-P1373TG



VKDC-P1973CG

**Benefits**

- 1.Environmentally-friendly R-290 refrigerant that has zero ozone depletion
- 2.Operating environment class:32°C/60%R.H.
- 3.Slimmer aluminium glass door frame and full length handle.
- 4.High brightness LED lights
- 5.Self-closing glass doors, Low energy consumption
- 6.Frost free.
- 7.Adjustable shelves behind each door.

Model	External Dimension(W*D*H)(INCH)			Door Qty	Temperature Range(°F)	Effective Volume(C.F)	Display Area(M²)	Input Power(W)	Refrigerant	40'Container loading(PCS)
VKDC-P0673TG	24.8	28.7	79.1	1	35.6-46.4	14.1	0.72	430	R290	45
VKDC-P1373TG	49.6	28.7	79.1	2	35.6-46.4	28.6	1.45	600	R290	24
VKDC-P1973TG	74.4	28.7	79.1	3	35.6-46.4	43.1	2.17	830	R290	15
VKDC-P2573TG	99.2	28.7	79.1	4	35.6-46.4	56.5	2.82	1150	R290	12
VKDC-P0673CG	24.8	28.7	79.1	1	35.6-46.4	14.1	0.72	430	R290	45
VKDC-P1373CG	49.6	28.7	79.1	2	35.6-46.4	28.6	1.45	600	R290	24
VKDC-P1973CG	74.4	28.7	79.1	3	35.6-46.4	43.1	2.17	830	R290	15
VKDC-P2573CG	99.2	28.7	79.1	4	35.6-46.4	56.5	2.82	1150	R290	12

Remark: TG : Without Canopy  
CG: With Canopy

**VERTICAL DISPLAY FREEZER**



VKDF-P1973TG



VKDF-P1373TG

**Benefits**

- 1.Environmentally-friendly R-290 refrigerant that has zero ozone depletion
- 2.Operating environment class:25°C/60%R.H.
- 3.Slimmer aluminium glass door frame and full length handle.
- 4.High brightness LED lights
- 5.Self-closing glass doors, Low energy consumption.
- 6.Frost free.
- 7.Adjustable shelves behind each door.

Model	External Dimension(W*D*H)(INCH)			Door Qty	Temperature Range(°F)	Effective Volume(C.F)	Display Area(M²)	Input Power(W)	Refrigerant	40'Container loading(PCS)
VKDF-P0673TG	24.8	28.7	79.1	1	≤-0.4	14.1	0.72	600	R290	45
VKDF-P1373TG	49.6	28.7	79.1	2	≤-0.4	28.6	1.45	1200	R290	24
VKDF-P1973TG	74.4	28.7	79.1	3	≤-0.4	43.1	2.17	1400	R290	15



## **VITLIFE AMERICA LLC**

4320 WINFIELD RD ,WARRENVILLE, IL 6055

Tel: 800 604 5402

Email : [info@vitlifecommercial.com](mailto:info@vitlifecommercial.com)

[www.vitlifecommercial.com](http://www.vitlifecommercial.com)