

Champion®

The Dishwashing Machine Specialists

Project _____
Item No. _____
Quantity _____

STANDARD FEATURES

- Patent pending compact, flexible design
- Fits high volume operations
- Quality stainless steel construction
- Fully-automatic operation
- Chain conveyor lifts for easy cleaning **NEW**
- Great solution for turning corners
- Sloped drain conveys water efficiently
- Quick-connect receptacle for error proof wiring to dishwasher **NEW**
- Easily handles 18"x26" sheet pans

PRO-90B L 90° LOAD TABLE

Powered Loader for Champion PRO Series
Rack Conveyor Dishmachines

POWERED BY **bi·line**
SYSTEMS



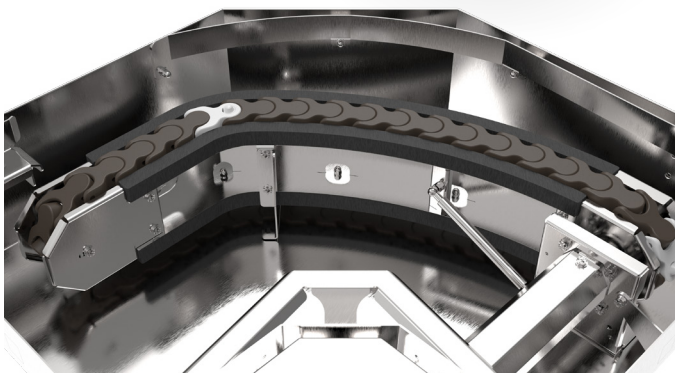
PRO-90B
90° Corner Conveyor Table
(PRO Series rack machines only)

Rendered image is for general visual representation only. Please refer to specifications for the latest detailed product information.



SPECIFIER STATEMENT

Specified unit will be Champion Model PRO-90B 90° load table designed to be mounted to Champion rack conveyor dishmachines only. 1 year parts and labor warranty.



PRO-90B L

90° LOAD TABLE

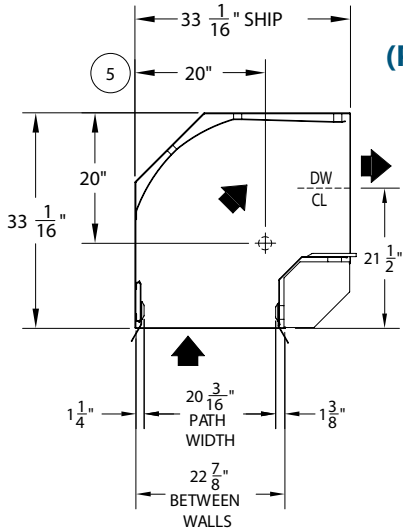
Powered Loader for Champion PRO Series
Rack Conveyor Dishmachines

POWERED BY **bi-line**
SYSTEMS

Champion[®]
The Dishwashing Machine Specialists

PRO-90B

90° Corner Conveyor Table (PRO Series rack machines only)



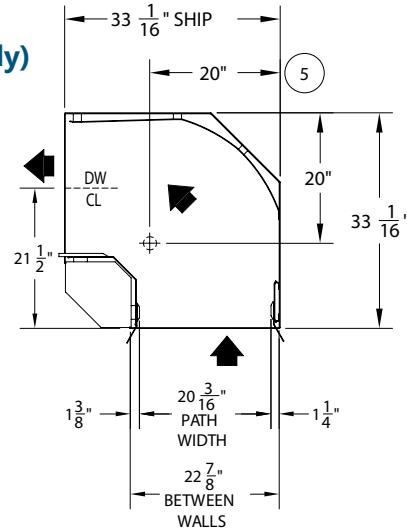
Shipping weight:

**300
LBS**

Volume crated:

**107
cu. ft.**

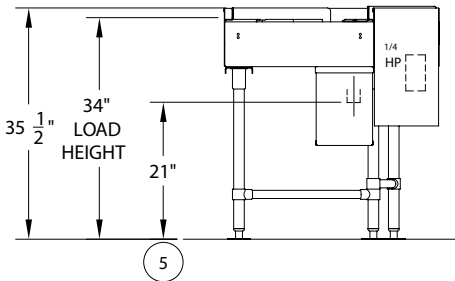
Drain size (5):
1-1/2" O.D.
slip-fit drain



PRO-90B Left to Right



PRO-90B Right to Left

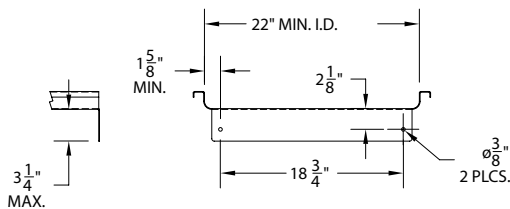
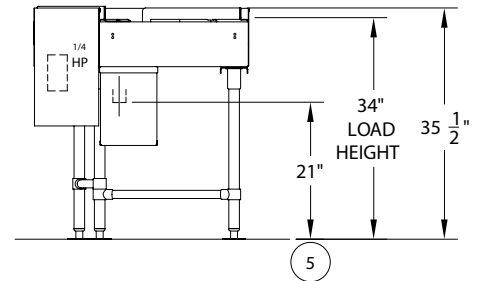


Max Speed:

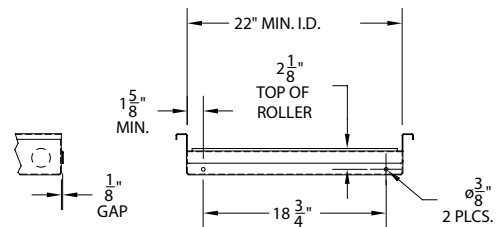
If loader is fed with a
motorized conveyor, the
max conveyor speed
should be as follows:

44/66/80/54/76/90
Loader = 5.8 ft/min

64/86/100PRO
Loader = 9.6 ft/min



**Typical Soiled Table Connection to PRO-90B
(Flat Top or Conveyor Belt Style Table)**



**Typical Soiled Table Connection to PRO-90B
(Roller Style Table)**

Bi-Line Systems In the USA:
3765 Champion Blvd, Winston-Salem, NC 27105
Tel: (800) 532-8591 Fax: (336) 661-1979
bilinesystems.com

Bi-Line Systems In Canada:
2674 N. Service Rd., Jordan Station, Ontario, Canada L0R1S0
Tel: (905) 562-4195 Fax: (905) 562-5422
bilinesystems.com

*Due to an ongoing value analysis program at
Bi-Line Systems, specifications contained in this
catalog are subject to change without notice.*

7/24