

ESTABLISHING A **NEW STANDARD** IN THE FOODSERVICE INDUSTRY.

Energy efficient, durable freezer providing perfect temperature preservation and performance.



KEY FEATURES



• Eco-Friendly Refrigerant

Environmentally friendly hydrocarbon refrigerant has low Global Warming Potential (GWP). Meets all USA & California refrigerant & energy standards.



• Electronic Temperature Controller

CIR WIFI electronic controller assures optimal refrigeration performance through precision temperature control, and intelligent control for defrost cycle, compressor & other component functions, such as bluetooth to Wifi capability.



• High Power Reliable Refrigeration System

Fast pull down, optimal internal air circulation and reliable refrigeration, maintaining colder temperatures for food preservation.



• Newly Designed Condenser

New condenser featuring a joints reduction down to zero, increasing long term refrigeration reliability and safeguarding against any system leaks.



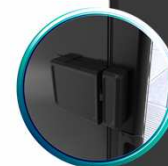
• Standard LED Lighting System

Ultra bright low energy interior LED illumination system provides optimal merchandise display visibility. Low profile, door mounted, clip-in LED design.



• Spark-Free Refrigeration Components

All Reach-In models will have spark free refrigeration components for optimal safety, per UL requirements.



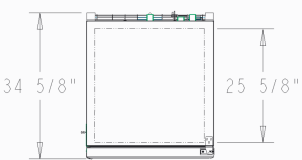
• Insight Health Lock

NAMA certified health lock system, with integrated Bluetooth communication: APP allows operators to lock & unlock on location via Bluetooth.

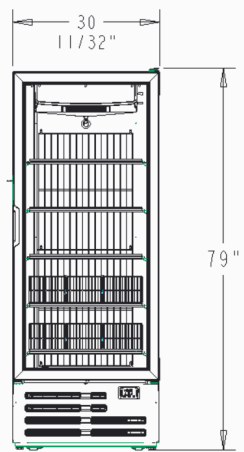
ESTABLISHING A **NEW STANDARD** IN THE FOODSERVICE INDUSTRY.

PRODUCT VIEWS

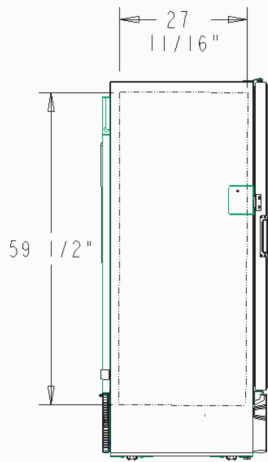
TOP VIEW



FRONT VIEW



SIDE VIEW



ADDITIONAL FEATURES



- Lock options with different capabilities available



- Gravity, sandwich trays and extra shelves available with this model



- Casters, Rollers and Legs available



- Price Kit – Available for shelf display

Customer service and warranty

Three year limited warranty, includes parts and labor.
 An additional two year warranty is issued on the compressor (USA & Canada only).
 Operators must follow installation and operational guidelines per Imbera Users Manual.
 Each cooler must be connected directly to a single power supply, otherwise warranty will be voided.
 Customer service: 866.548.5770

TECHNICAL SPECIFICATIONS

Exterior Dimensions

H: 79 " 208 cm
 W: 30 11/32" 77 cm
 D: 34 5/8" 88 cm

Interior Dimensions

H: 59 1/2" 151 cm
 W: 25 5/8" 65 cm
 D: 27 11/16 " 70 cm

Usable Interior Capacity

H: 49 1/4" 126 cm
 W: 22 7/8" 58 cm
 D: 24 1/16" 61 cm

Usable Volume

16 ft3
 453 lts

Gross internal capacity

24.1 ft3
 682.4 lts

Doors

1

Door construction

Plastic Frame

Shelves

4

Shelves Size

W: 22 7/8" 58 cm
 D: 24 1/16" 61 cm

External Material

Pre-painted steel

Internal Material

Pre-painted steel

REFRIGERATION PERFORMANCE DATA

Refrigerant

R290 3.9 Oz (0.110 kg)

Energy Consumption

7.221 kWh/24h

Compressor Power

1 HP

Condenser

Dynamic

Thermostat setting

Cut-Out	Cut-In
T1 -6.7°F (-21.5°C)	-4.5°F (-20.2°C)
T2 -2.2°F (-19.0°C)	-0.4°F (-18°C)
T3 -9.0°F (-22.8°C)	-6.5°F (-21.4°C)
T4 -14.8 °F (-26.0°C)	-13.0°F (-25°C)

ELECTRICAL DATA

Power supply

115V/60 Hz

AMPS

7.9 A

Lighting

300 Lux Output
 3 Modules
 -8 Leds Lamp (1 piece)
 -32 Leds Lamp (2 pieces)

Plug Type

NEMA 5-15P

Controller

CIR WIFI

Cord length

118" (300 cm)

LOGISTIC DATA

Trailer Loads

20': 22
 40': 44
 53': 66

Unit weight with packaging

451,9 lb 205 kg

without packaging

419,6 lb 190.35 kg

Dimensions w/packaging

H: 83 1/2" 212 cm
 W: 32 3/4" 83 cm
 D: 36 3/4" 94 cm

*Energy consumption based on ANSI/ASHRAE Standard 72-2005

*BMAD System (Low maintenance high performance)

*Dimensions rounded up to the nearest inch or centimeter

*Specifications subject to change without notice

*H: Height, W: Width, D: Depth
 15/03/24