



HAND SINKS BROCHURE

50 Ranick Drive East • Amityville, NY 11701
800-221-5644 • info@imcteddy.com
www.imcteddy.com



WALL MOUNTED HAND SINKS

IMC Hand Sinks are constructed of Type 304 stainless steel with an attractive brushed finish and is easy to clean. All corners are coved, and all seams are fully welded and polished. Large oversize deck provides space for faucet, soap dispenser or eye wash station. High backsplash protects wall and keeps sink sanitary. Large integral apron conceals all plumbing. Any sink can be made a correctional sink by simply changing faucets and using tamper-proof screws where applicable. Versatile design permits the use of large variety of plumbing options and accessories. All hand sinks are hand made so there is no loss of metal thickness.

WS HAND SINKS



WS-2S
Shown w/
Standard
Faucet & Soap
Dispenser



- 16GA Type 304 Stainless Steel
- Bowl Size 9³/₈" x 11⁵/₈" x 5"
- Large Coved Corner Sink Bowl with Built-In Pitch
- High Backsplash Protects Wall
- Non-Drip Marine Edges
- Large Integral Apron Conceals all Plumbing
- Fastens to Wall with Rear Flange & "Z" Strip
- Includes Soap Dispenser Except Security Models

ADA-WS HAND SINKS



ADA-WS-2D
Shown w/
Standard Faucet &
Soap Dispenser

- 16GA Type 304 Stainless Steel
- Bowl Size 16" x 14" x 4"
- Includes 6" Apron, Mounting Bracket & Clips with Hardware
- 10" Backsplash
- Deck Mounted ADA Soap Dispenser & ADA Wrist-Action Handle Faucet Are Included
- Built-In Towel Dispenser Accommodates 9¹/₂" Multi-Fold Towels



WSMS-2-48
Shown w/ Optional
60" Legs & Electronic
Soap Disp.

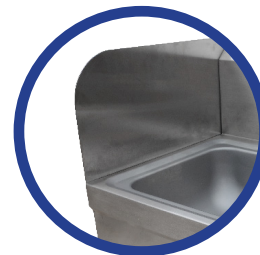
WSMS HAND SINKS

- 16GA Type 304 Stainless Steel
- 10" Backsplash
- Fully Welded with 1¹/₂" Rolled Front & Ends
- 12GA Stainless Steel Brackets Welded at Each End for Installation
- Gooseneck Faucet & Soap Dispenser Included with Unit
- 2-4 Positions Available

ADD OPTIONS TO YOUR SINK:

See Price Book Page 66-69 for all options

Double Knee Valve
(KNV)



Side Splashes (SS)



Integral Towel
Disp. (ITD)



Contact your representatives or the factory for more information, to request a quote or to purchase our products.

CSW HAND SINKS



CSW-2S
Shown w/
Standard
Faucet



- 20GA Type 304 Stainless Steel
- Bowl Size 10" x 14" x 5"
- Fully Welded with Integral Apron
- Built-In Pitch to 1½" Waste Outlet
- Fastens to Wall with Rear Flange & "Z" Strip
- Designed for Institutional & Commercial Applications

WS-CK HAND SINKS



WS-CK-2S



- 16GA Type 304 Stainless Steel
- Bowl Size 9¼" x 11½" x 6"
- Large Coved Corner Sink Bowl with Built-In Pitch
- 7¾" High Backsplash Protects Wall
- Flat Edges
- 7" Integral Apron Conceals all Plumbing
- Fastens to Wall with Rear Flange & "Z" Strip
- Includes Soap Dispenser

SCB SERVICE SINKS



SCB-1
Shown w/
Standard Faucet

- 14GA Type 304 Stainless Steel
- Coved Corners
- Fully Welded with Rolled Front & Ends
- 8" Backsplash
- 1-2 Positions Available
- Includes Faucets
- Fastens to Walls with Rear Flange & (2) Strips

MHS MOON HAND SINK



- 14GA Type 304 Stainless Steel
- 18GA Type 304 Stainless Steel Base
- Sink Bowl is Rounded & Pitched to 3½" Crumb Cup with ½" Fittings
- Faucet Spouts Are Secured to 14GA S/S Cylinder
- Pedestal Base is Removable via Screws for Access to Plumbing
- Integral Backsplash is 14GA S/S - 15½" High
- Includes Faucets & Foot Pedal Valves

DIS HAND SINKS



DIS-5-SS
Shown w/
Faucet & Side
Splashes

- 18GA Stainless Steel Apron
- 4" O.C. Deck Mount
- Designed for Institutional & Commercial Applications
- Sink Bowl Measuring 10" x 14" x 5" (-5 Models) or 10" x 14" x 9" (-9 Models)
- Includes Basket Drain With Crumb Cup
- Order Other Accessories Separately & Faucets Where Not Included

IHST HAND SINKS



- 16GA Type 304 Stainless Steel Top & Sink Bowl
- Sink Bowl has "V" Nose (Non-Drip Marine Edge) on Front of Sink
- Sink Bowl Size: 9½" x 11½" x 5" Deep
- Pitched to 1½" Waste Outlet
- 18GA S/S Apron with Built-in Towel Dispenser
- ½" Lip on 3 Sides Makes it Easy to Weld into Worktable or Can Be Used as a Drop-In

FREE STANDING HAND SINKS

HS HAND SINKS



HS
Shown w/
Optional (EW-S)
Eye Wash Faucet



- 16GA Type 304 Stainless Steel
- Bowl Size 11½" x 9½" x 5½"
- Overall Size: 19¼" x 20½" x 50⅞"
- Body is 18GA Stainless Steel
- 16¾" High Backsplash Protects Wall
- Includes Standard Faucet & Soap Dispenser
- Integral Cabinet Body Supports Sink & Provides Access to Plumbing

CMS COMBO SINK



CMS

- 16GA Type 304 Stainless Steel
- Bowl Size is 14" x 10" x 5½"
- Utility Sink Size is 18" x 18" x 5"
- Overall Size is 25" x 20" x 43"
- Grating Constructed from 1" Bars & ½" Rods
- The Unit Is Mounted on 1⅝" Legs with Adjustable Feet
- Removable Side Panel Allows Access to Plumbing
- Includes Faucets & Pot Filler



Contact your representatives or the factory for more information, to request a quote or to purchase our products.

PHS HAND SINKS



- 16GA Type 300 Series Stainless Steel
- Bowl Size is 11½" x 9½" x 5½" Deep
- Overall Size: 21" x 24" x 38"
- Backsplash & Side Splash Prevent Water From Splashing All Over
- 18GA Double Pan Hinged Door with Integral Towel Dispenser.
- Standard Soap Dispenser Holds 1 Pint
- Unit Is on 3" Casters, (2) with Brakes
- Integrated Handwash System, 5 Gallon Removable Fresh Water Tank, 6 Gallon Removable Waste Water Tank & 8' Cord with Standard Plug

CSB HAND SINKS



CSB

Shown here with Optional Electronic Faucet (EFD-1SG) & Foot Pedal Valve (FPV)

- 20GA Type 300 Series Stainless Steel
- Bowl Size 10" x 4" x 5"
- Furnished with a Full Size Base (Overall Size 15½" x 17" x 42")
- 7¾" High Backsplash Protects Wall
- Integral Body Conceals All Plumbing

CSF HAND SINKS



CSF

Shown w/
Standard Faucet

- 20GA Type 304 Stainless Steel
- Bowl Size 10" x 4" x 5"
- Furnished with a Pedestal Base (Overall Size 15½" x 17" x 42")
- 7¾" High Backsplash Protects Wall
- Integral Body Conceals All Plumbing

CSO HAND SINKS



CSO-X

Faucet Not
Included

- 20GA Type 304 Stainless Steel
- Bowl Size 10" x 4" x 5"
- Furnished with a Octagon Shaped Base (Overall Size 15½" x 17" x 42")
- 7¾" High Backsplash Protects Wall
- Integral Body Conceals all Plumbing

HANDS-FREE HAND SINKS

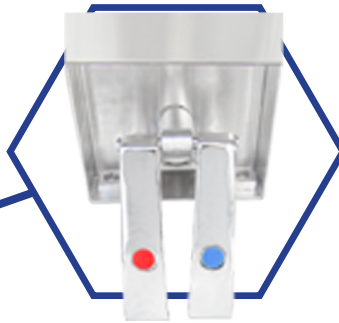
IMC/Teddy's Hand Sinks are ready to be converted into a 100% fully hands-free system to aid your facility's hygienic practices.

Equip yours with foot or knee pedal valves to eliminate the risk of spreading germs & bacteria. Electronic faucets are also available to decrease contact points on your hand sink.

See [pages 8-10](#) for a complete list of hands-free accessories.



Model #CSW-1S-SSX
Shown w/ Side Splashes
& Knee Valve



Model #KNV Heavy Duty
Double Knee Valve w/
Bracket



Model #CSW-1S-Shown
w/ Long Apron & EFD-1SG
Electronic Faucet

GALLERY



Contact your representatives or the factory for more information, to request a quote or to purchase our products.



Contact your representatives or the factory for more information, to request a quote or to purchase our products.



FAUCETS



RGLH-D
Deck Mounted 4" OC
Gooseneck Faucet
w/ Wrist Handles

➤ Use w/ Any Sink



RGLH-S
Splash Mounted 4" OC
Gooseneck Faucet
w/ Wrist Handles

➤ Use w/ Any Sink



RGSH-D
Deck Mounted 4" OC
Gooseneck Faucet
w/ Lever Handles

➤ Use w/ Any Sink



RGSH-S
Splash Mounted 4" OC
Gooseneck Faucet
w/ Lever Handles

➤ Use w/ Any Sink



SCMV
Deck Mounted
Security Faucet w/
Metering Valve

➤ Use w/ Any Sink

*Upgrade RGLH faucet to equal T&S, Fisher or Chicago - specify model #.



EFD-2D
4" OC Electronic Deck
Mounted Integral
Spout Faucet

➤ Use w/ Any Sink



EFD-1D
Single Hole Electronic
Deck Mounted
Integral Spout Faucet

➤ Use w/ Any Sink



EFD-1DG
Single Hole Electronic
Deck Mounted
Gooseneck Faucet

➤ Use w/ Any Sink



EFD-1SG
Single Hole Electronic
Splash Mounted
Gooseneck Faucet

➤ Use w/ Any Sink



WRA-4C
Wrist Action Handle
(Pair)

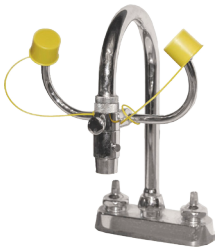
➤ 4" Long



LH-BR
Lever Handle (Pair)

➤ Use w/ Any Sink

EYE WASH STATIONS *Mixing valve not included.



EW-S
Faucet Mounted Eye Wash
Station. Use with Standard
Faucet Only.

➤ Use w/ Any Sink



EW-U
Universal Mounted Eye
Wash Station. Mount in
Place of ITD.

➤ Use with WS or ADA-WS
Models Only

CMS ACCESSORIES



CMS Pot Filler
Includes Pot Filler Valve,
Vacuum Breaker & 3-Ply
Hydraulic Hose

➤ Use with Model #CMS



CMS Faucet
Single Deck Dual Lever
Handle 6" Swing Spout.
2.20 GPM Aerator @ 80 PSI

➤ Use with Model #CMS



Contact your representatives or the factory for more information, to request a quote or to purchase our products.

STAINLESS STEEL TOWEL DISPENSERS



TD
Wall/Backsplash Mounted
Towel Dispenser.

Specify for wall or backsplash mount

➤ Overall Size: 19¼" x 14" x 4"



TD-B
Wall/Backsplash Mounted
Towel Dispenser. Holds
(525) Multi-Fold or (400)
C-Fold Paper Towels.
Includes Lock & Key.

➤ Overall Size: 11" x 14⅝" x 4⅞"



TD-L
Wall/Backsplash Mounted
Mini Towel Dispenser.
Holds (275) Multi-Fold or
(200) C-Fold Paper Towels.
Includes Lock & Key.

➤ Use w/ Any Sink
➤ Overall Size: 11" x 8" x 4"



TD-R
Wall Mounted Roll Towel
Dispenser. Holds (1) 8" or 9" Wide
Towel Roll Up to 800 ft. Includes
Lock & Key.

➤ Overall Size: 12¼" x 15" x 9½"



TD-AR
Wall Mounted Automatic
Towel Dispenser. No-Touch
Unit. Holds (1) 8" Wide Towel
Roll Up to 800ft. Includes
Lock & Key.

Batteries not included

➤ Overall Size: 13" x 17¾" x 10"



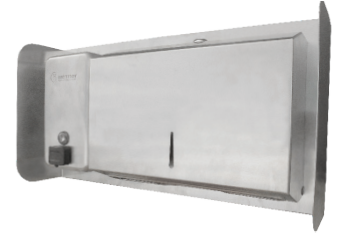
CTSD
Wall Mounted Combination
Towel & Soap Dispenser.
Includes Lock & Key.

➤ Overall Size: 11" x 14⅝" x 4⅞"



ITSD
Integrated Combination Towel
& Soap Dispenser. Unit To Be
Wall Mounted Above IMC/
Teddy Hand Sink. Includes
Lock & Key.

➤ Overall Size: 19⅜" x 13⅞" x 4⅜"



ITSD-2
Soap & Towel Dispenser. Unit
to Be Mounted above any
IMC/Teddy Sink. Includes
Lock & Key.

➤ Overall Size: 17" x 10" x 6"



ITD
Integrated Towel Dispenser
Built Into Apron Of Hand Sink.

➤ Overall Size: 12¼" x 15" x 9½"



TD-M
Mirrored Towel Dispenser.
Includes Lock & Key.

➤ Not for Institutional Sinks.
➤ Overall Size: 19¼" x 14" x 4"

ACCESSORIES

SOAP DISPENSERS



SD
Deck Mounted Integral
Soap Dispenser

▶ Holds 24 oz.



SD-E
Deck Mounted Electronic
Soap Dispenser

Batteries not included

▶ Holds 54 oz.



ESD
Deck Mounted Electronic
Soap Dispenser

Batteries not included

▶ Holds 27 oz.



ESD-R
Electronic Soap Dispenser
Refill Bottles. 27oz.

▶ Use with ESD Models
Only



SDW
Wall Mounted Soap
Dispenser



SDW-2
Wall Mounted Soap
Dispenser

FOOT PEDALS & KNEE VALVES



FPV
Heavy Duty Foot Pedal
Valve & Gooseneck Spout



FPV-2
Foot Pedal Valve &
Gooseneck Spout



KNV
Heavy Duty Double Knee
Valve & Gooseneck Spout



KNV-2
Double Knee Valve &
Gooseneck Spout



KNV-3
Heavy Duty Adjustable
Double Pedal Valve



KNV-S
Knee Action Valve w/ Wall
Support Bracket & Sink
Mounted Spout

LEVER DRAINS



KNV-RV
Replacement Push Button
Valve



KNV-3
Heavy Duty Adjustable
Double Pedal Valve



KNV-S
Knee Action Valve w/ Wall
Support Bracket & Sink
Mounted Spout



LD-2
Lever Drain

▶ Changes Drain Size to 3 1/2" ID
▶ Voids ADA Compliance



LDO-2
Lever Drain w/ Overflow

▶ Changes Drain Size to 3 1/2" ID
▶ Voids ADA Compliance

MISC.



HSS-T
Hand Sink Strainer



T
"P" Trap



MXV
Eye Wash Mixing Valve



Contact your representatives or the factory for more information, to request a quote or to purchase our products.

HAND SINK OPTIONS

Model #	Description
SA-22	22" Apron for CSW-1S-SW
TLG	Adjustable Tubular Legs
P	Back Panel for HS Model Only
CBW	Custom Bowl Size
BTX	Extra Batteries (Set of 4)
HGD	Hinged Door w/ Shelf for HS Model Only
DRL	Lock for HS Model Only
PHSP	Padlock Hasp for (TD) Towel Dispenser (Lock by Others)
KEY	Replacement Keys
SS	Side Splashes for Hand Sinks (Pair)
TWB	Tubular Wall Brackets
VRA-5GPM	Vandal Resistant Aerator - .5 GPM



Model #CSW
w/ Side Splashes &
EFD-2D Electronic
Faucet



Model #WS-2S
w/ CTSD



IMC is a Consultant/Designer driven manufacturer of Food Service Equipment. We welcome product recommendations and upgrade suggestions from you. Our mission is to introduce new and innovative products in food service equipment and storage/handling systems.

IMC only uses Type 304 stainless steel which is recommended for high corrosion resistance and uniformity of finish. Every IMC product will perform its intended function even in the most punishing work environment.

Production begins with Laser and CNC machine work and the final product is finished with a non-directional brushed satin. The finish has the ability to hide and blend scratches for many years. Each product is then carefully inspected and protected for delivery to the customer.

For a complete catalog or the representative nearest to you, Visit www.imcteddy.com or contact us below.



50 Ranick Drive East • Amityville, NY 11701

800-221-5644 • info@imcteddy.com

www.imcteddy.com

