



## Spiral dough mixer

Spiral kneading with firm or raising head, ideal for small spaces with rotating wheels. To the construction are used high quality and robustness materials. Thanks to the particular shape of spiral and to the rotating movement of the utensil combined with that of the basin, the spiral kneading, gives possibility to mix in few minutes 55-84-97 lb (25-38-44 Kg) dough (depending on the models), and assures very good homogeneity and oxygenation. The model assure constant temperature of the dough from beginning to end working, so eliminate the danger of incidental overheating. The model white raising head give possibility easy dough drawing and cleaning. The transmission system is particularly silent because all parts are assembled on waterthigt ball bearings with bath oil motoreducer, free maintenance. The machinery is provided of two speeds motor (iM25/2-38/2-44/2-60/2 models) and of indispensables safety devices



### OPERATION

- Dough homogeneity and oxygenation by the combined rotating movement of the utensil and basin
- The shape of the spiral assures a low and constant temperature of dough during the working
- Possibility to mix maximum 55-84-97-133 lb (25-38-44-60 Kg) in few minutes (depending on the model)
- Extractable basin for dough easy dough drawing and cleaning (raising head models)

### CONSTRUCTION

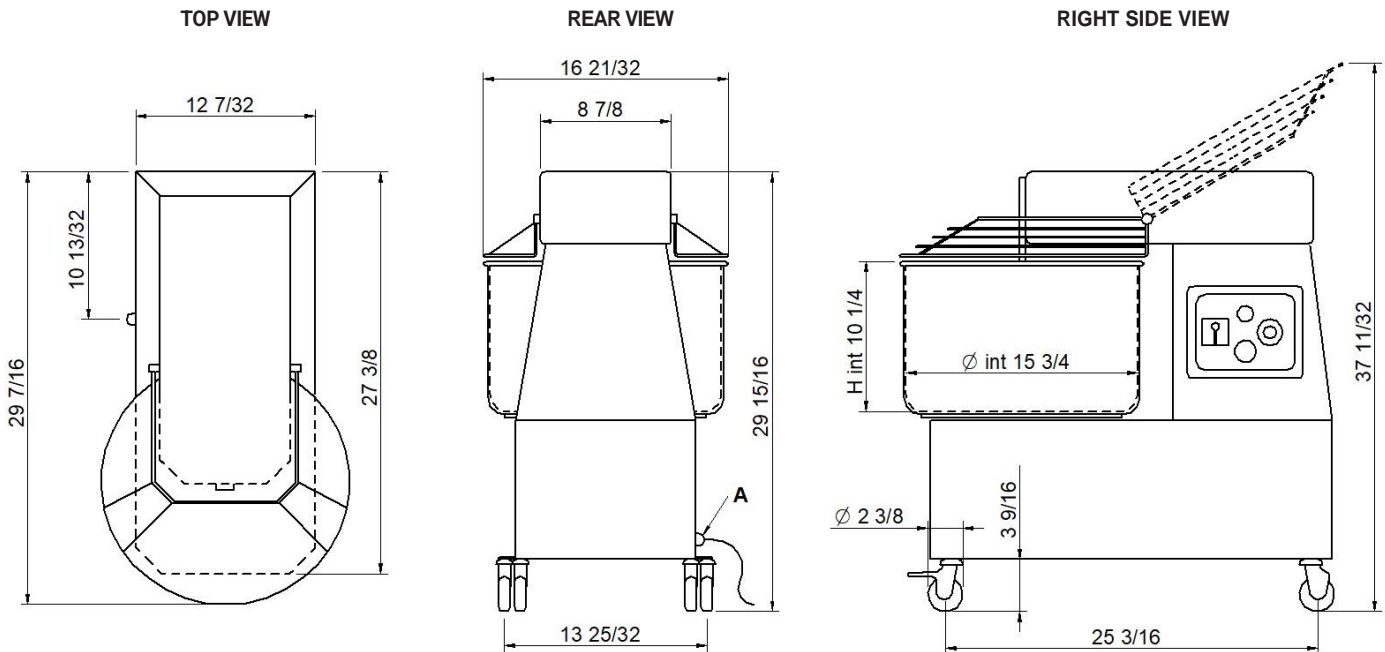
- Structure in powder painted stainless steel
- Spiral, basin, dough-breaker and safety grille in stainless steel
- Thick frame to avoid vibrations in every working phase
- Push-button panel on the right side
- Machinery on feet front and rotating wheels rear (iM60), on rotating wheels in the remaining models
- Motorization with bath oil motoreducer
- Chain drive
- Rotating transmission parts are assembled on self lubricating ball bearings
- Electrical equipment with low-voltage auxiliary circuit
- Safety device for grille
- Sensor presence, disk for speedy locking and unhooking of basin (raising head models)
- Timer

### STANDARD EQUIPMENT

- Spiral
- Basin
- Dough-graker
- Rotating wheels or adjustable foots (depending on the models)
- 2 speeds (depending on the models)

## iM 25U – iM 25/2U

[55 lb (25kg), firm head, 1-2 speeds, timer, rotating wheels]



**NOTE:** The dimensions indicated in the views are in millimeters.

<b>A</b>			
Lenght 59 1/6" (1500mm)			
Power cable			

### EXTERNAL DIMENSIONS

External height	29 15/16" (760mm)
External depth	29 7/16" (748mm)
External width	16 21/32 (423mm)
Weight	221 lb (100kg)

### BASIN CAPACITY

Capacity (dough)	56 lb (25kg)
Capacity (volume)	8,72 gal (33lt)
Basin internal diameter	15 3/4" (400mm)
Basin internal height	10 1/4" (260mm)
Spiral diameter	7/8" (22mm)

### SHIPPING INFORMATION

Packed machinery:	
Max height	33 3/32" (840mm)
Max depth	31 1/2" (800mm)
Max width	18 29/32" (480mm)
Weight	238 lb (108kg)

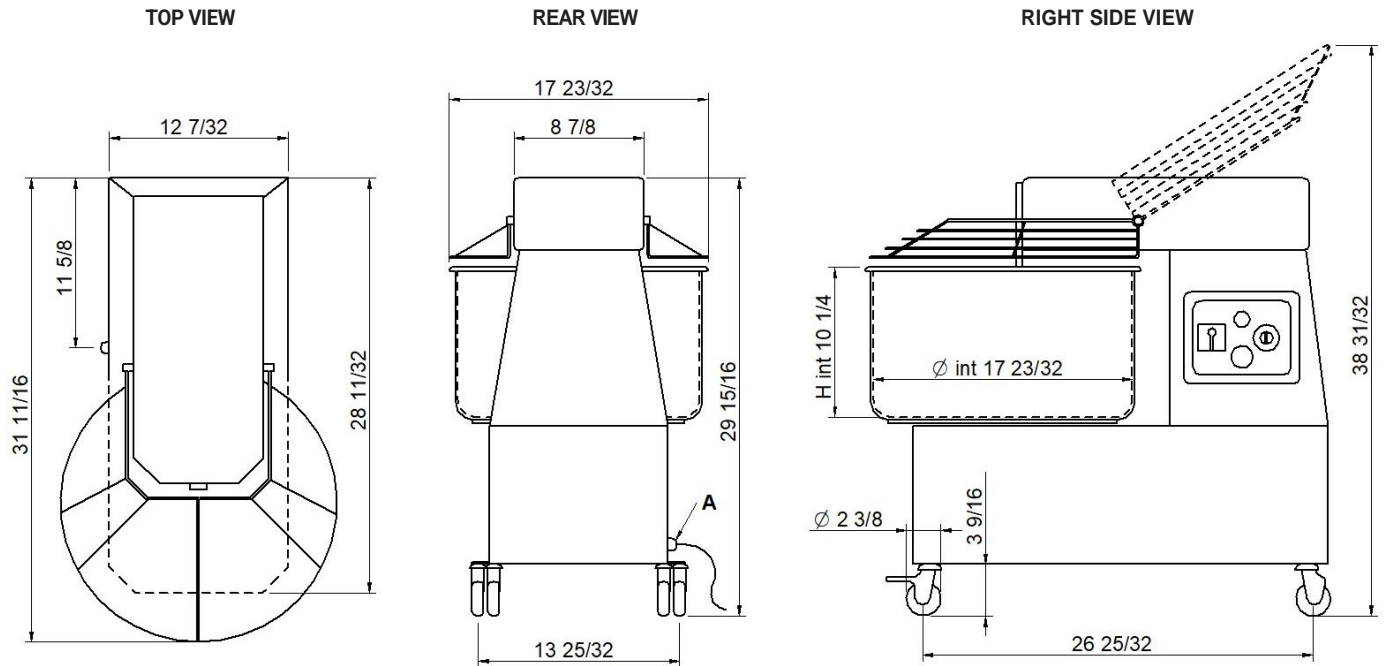
### FEEDING AND POWER

Standard feeding	
1 speed	
A.C. V240 1ph	
Max power	1,1 kW
Ampère max	10A
2 speeds	
A.C. V208 3ph	
Max power	1,42 kW
Ampère max	6,8A
Frequency	60Hz

**Two speeds machine not available with V240 1ph**

**NOTE:** MORETTI FORNI S.P.A. reserves the right to modify the characteristics of the products illustrated in this publication without prior notice

**iM 38U - iM 38/2U**  
 [84 lb(38kg), firm head, 1-2 speeds, timer, rotating wheels]



**NOTE:** The dimensions indicated in the views are in millimeters.

<b>A</b>			
Lenght 59 1/6" (1500mm)			
Power cable			

**EXTERNAL DIMENSIONS**

External height	29 15/16" (760mm)
External depth	31 11/16" (805mm)
External width	17 23/32" (450mm)
Weight	247 lb (112kg)

**BASIN CAPACITY**

Capacity (dough)	84 lb (38kg)
Capacity (volume)	10,57 gal (40lt)
Basin internal diameter	17 23/32" (450mm)
Basin internal height	10 1/4" (260mm)
Spiral diameter	7/8" (22mm)

**SHIPPING INFORMATION**

Packed machinery:	
Max height	33 3/32" (840mm)
Max depth	32 11/16" (830mm)
Max width	20 15/32" (520mm)
Weight	263 lb (119kg)

**FEEDING AND POWER**

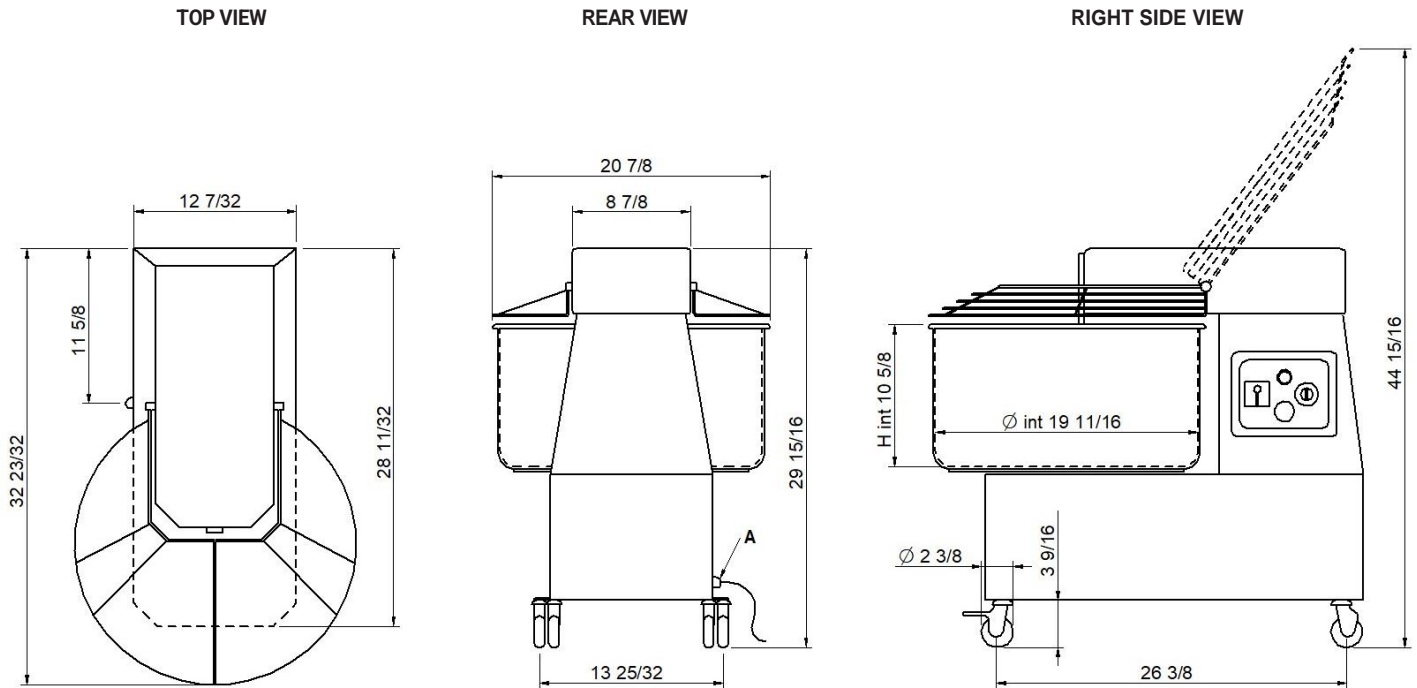
Standard feeding	
1 speed	
A.C. V240 1ph	
Max power	1,5 kW
Ampère max	11,5A
2 speeds	
A.C. V208 3ph	
Max power	2,2 kW
Ampère max	9,0A
Frequency	60Hz

**Two speeds machine not available with V240 1ph**

**NOTE:** MORETTI FORNI S.P.A. reserves the right to modify the characteristics of the products illustrated in this publication without prior notice

## iM 44U - iM 44/2U

[97 lb(44kg), firm head, 1-2 speeds, timer, rotating wheels]



**NOTE:** The dimensions indicated in the views are in millimeters.

<b>A</b>			
Lenght 59 1/6" (1500mm)			
Power cable			

### EXTERNAL DIMENSIONS

External height	29 15/16" (760mm)
External depth	32 23/32" (831mm)
External width	20 7/8" (530mm)
Weight	254 lb (115kg)

### BASIN CAPACITY

Capacity (dough)	97 lb (44kg)
Capacity (volume)	13,21 gal (50 lt)
Basin internal diameter	19 11/16" (500 mm)
Basin internal height	10 5/8" (270 mm)
Spiral diameter	15/16" (24 mm)

### SHIPPING INFORMATION

Packed machinery:	
Max height	33 27/32" (860mm)
Max depth	34 21/32" (880mm)
Max width	22 7/16" (570mm)
Weight	269 lb (122kg)

### FEEDING AND POWER

Standard feeding	
1 speed	
A.C. V240 1ph	
Max power	1,5 kW
Ampère max	11,5A
2 speeds	
A.C. V208 3ph	
Max power	2,2 kW
Ampère max	9,0A
Frequency	60Hz

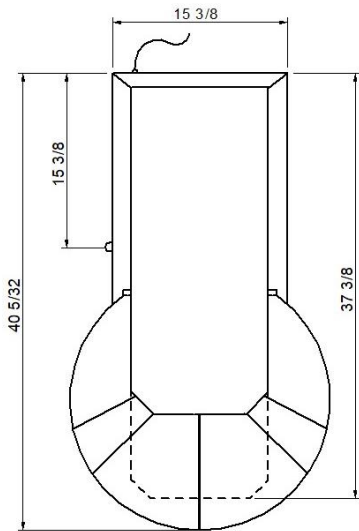
**Two speeds machine not available with V240 1ph**

**NOTE:** MORETTI FORNI S.P.A. reserves the right to modify the characteristics of the products illustrated in this publication without prior notice

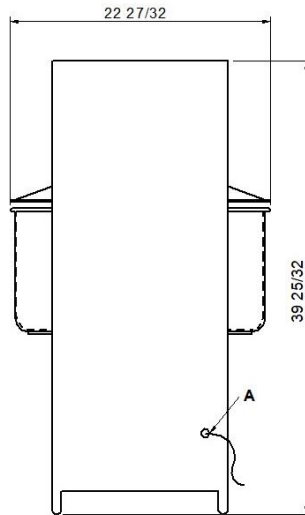
## iM 60/2U

[132 lb(60kg), firm head, 2 speeds, timer, feet front and rotating wheels rear]

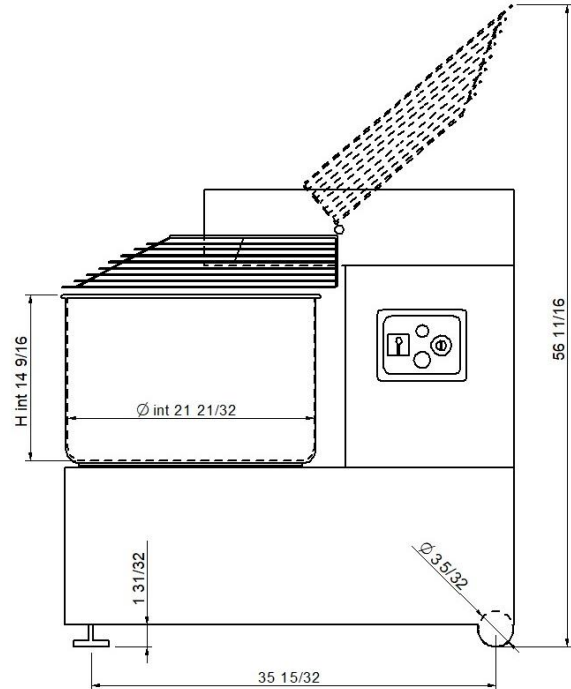
TOP VIEW



REAR VIEW



RIGHT SIDE VIEW



**NOTE:** The dimensions indicated in the views are in millimeters.

**A**

Lenght 59 1/6" (1500mm)  
Power cable

### EXTERNAL DIMENSIONS

External height	39 25/32" (1010mm)
External depth	40 5/32" (1020mm)
External width	22 27/32" (580mm)
Weight	551 lb (250kg)

### SHIPPING INFORMATION

Packed machinery:	
Max height	51 3/16" (1300mm)
Max depth	47 1/4" (1200mm)
Max width	31 7/8" (810mm)
Weight	587 lb (266kg)

### FEEDING AND POWER

Standard feeding	
2 speeds	
A.C. V208 3ph	
Max power	3,3 kW
Ampère max	13,8A
Frequency	60Hz

### BASIN CAPACITY

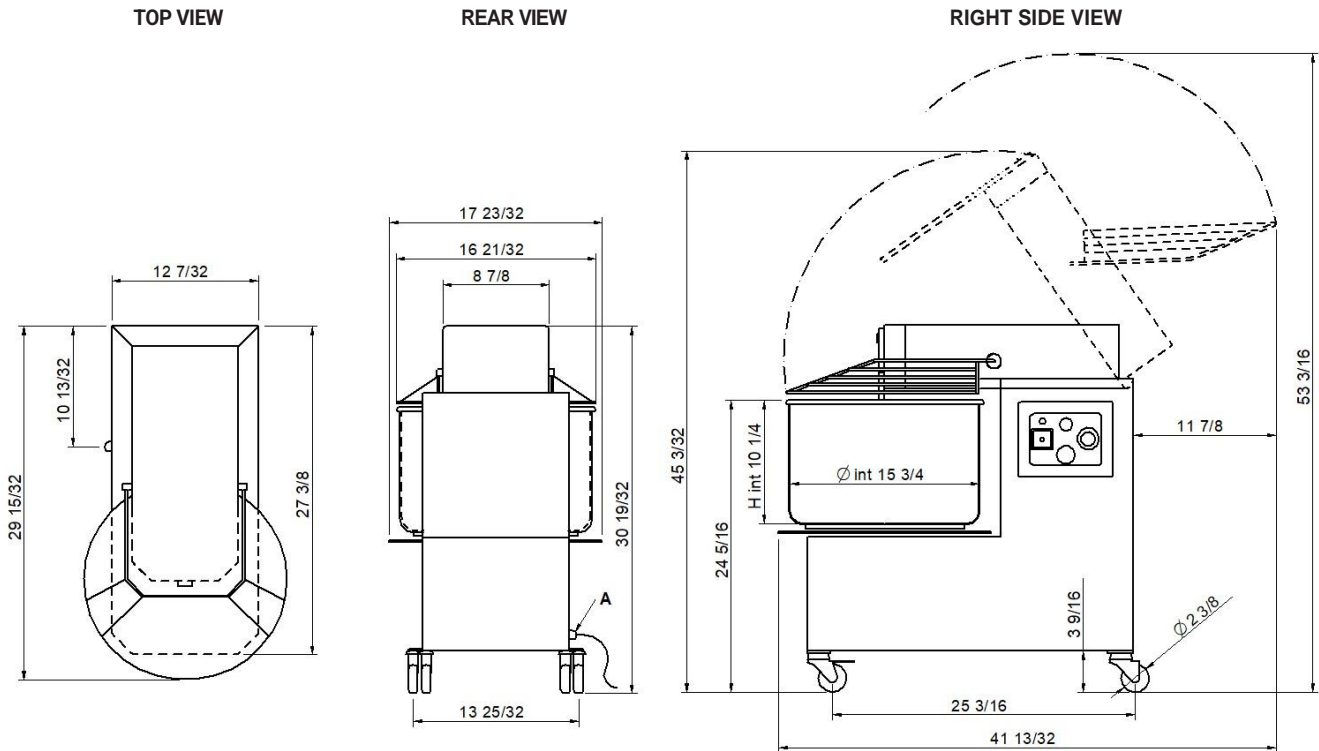
Capacity (dough)	132 lb (60kg)
Capacity (volume)	19,81 gal (75lt)
Basin internal diameter	21 21/32" (550mm)
Basin internal height	14 9/16" (370mm)
Spiral diameter	1 1/4" (32mm)

**Two speeds machine not available with V240 1ph**

**NOTE:** MORETTI FORNI S.P.A. reserves the right to modify the characteristics of the products illustrated in this publication without prior notice

## iM 25/2RU

[55 lb(25kg, raising head, 2 speeds, timer, rotating wheels)]



**NOTE:** The dimensions indicated in the views are in millimeters.

<b>A</b>			
Lenght 59 1/6" (1500mm) Power cable			

### EXTERNAL DIMENSIONS

External height	30 19/32" (777mm)
External depth	29 7/16" (748mm)
External width	17 23/32" (450mm)
Weight	260 lb (118kg)

### SHIPPING INFORMATION

Packed machinery:	
Max height	33 3/32" (840mm)
Max depth	31 1/2" (800mm)
Max width	18 29/32" (480mm)
Weight	278 lb (126kg)

### FEEDING AND POWER

Standard feeding	
2 speeds	
A.C. V208 3ph	
Max power	1,42 kW
Ampère max	6,8A
Frequency	60Hz

### BASIN CAPACITY

Capacity (dough)	55 lb (25kg)
Capacity (volume)	8,72 gal (33lt)
Basin internal diameter	15 3/4" (400mm)
Basin internal height	10 1/4" (260mm)
Spiral diameter	7/8" (22mm)

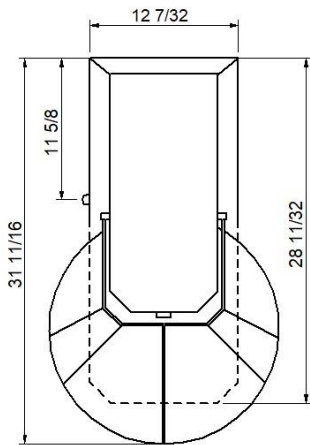
**Two speeds machine not available with V240 1ph**

**NOTE:** MORETTI FORNI S.P.A. reserves the right to modify the characteristics of the products illustrated in this publication without prior notice

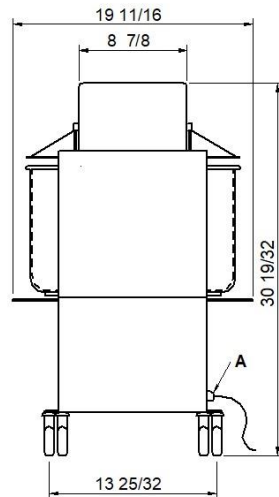
## iM 38/2RU

[84 lb(38kg), raising head, 2 speeds, timer, rotating wheels]

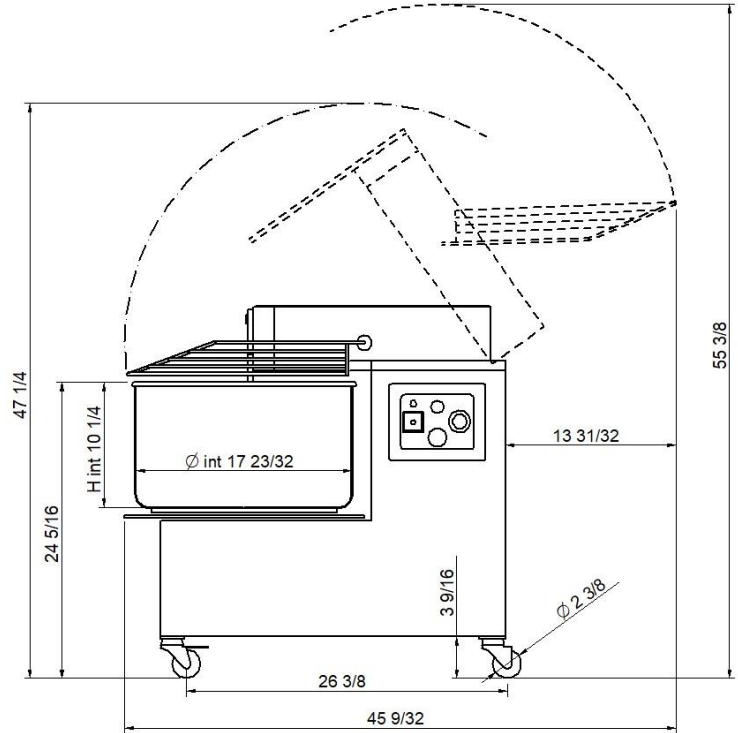
TOP VIEW



REAR VIEW



RIGHT SIDE VIEW



**NOTE:** The dimensions indicated in the views are in millimeters.

**A**

Lenght 59 1/6"(1500mm)  
Power cable

### EXTERNAL DIMENSIONS

External height	30 19/32"(777mm)
External depth	31 11/16"(805mm)
External width	19 11/16"(500mm)
Weight	287 lb (130kg)

### SHIPPING INFORMATION

Packed machinery:	
Max height	3 3/32" (840mm)
Max depth	32 11/16" (830mm)
Max width	20 15/32" (520mm)
Weight	304 lb (138kg)

### FEEDING AND POWER

Standard feeding	
2 speeds	
A.C. V208 3ph	
Max power	2,2 kW
Ampère max	9,0A
Frequency	60Hz

### BASIN CAPACITY

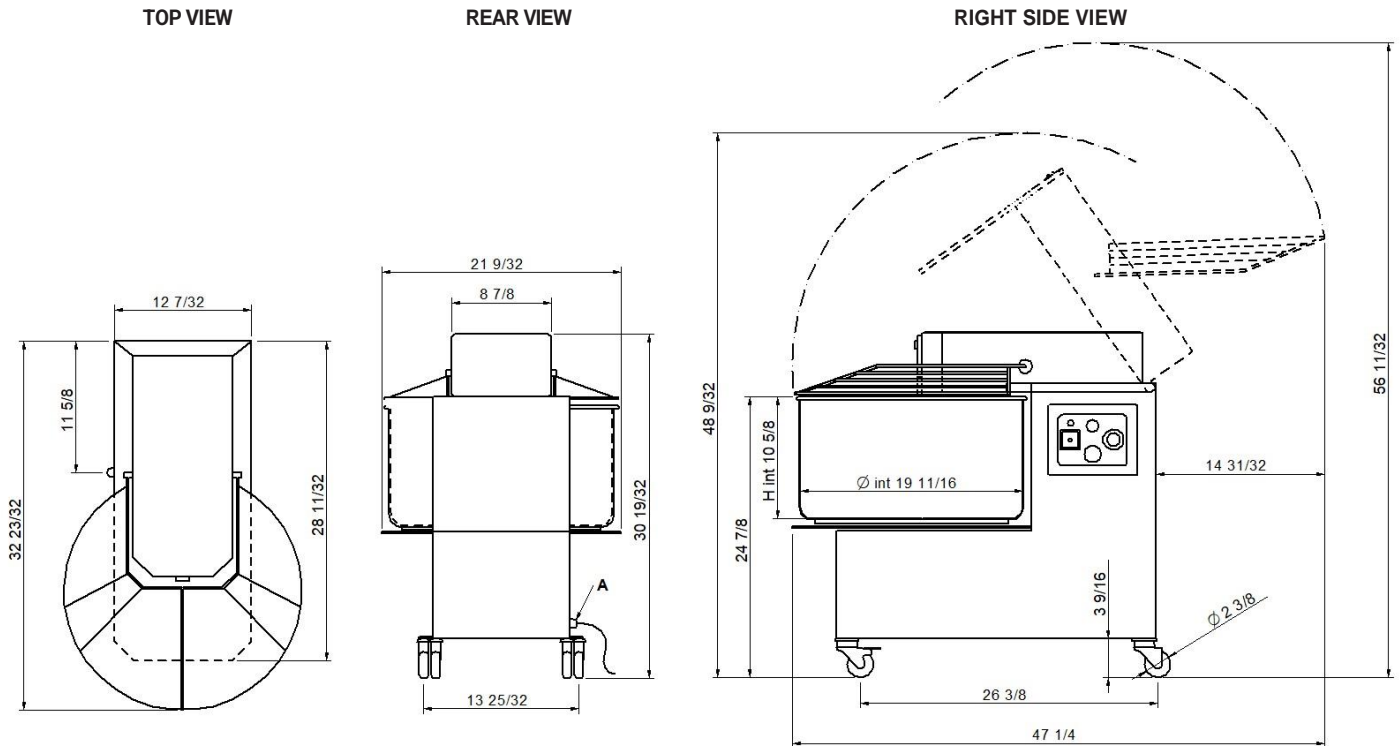
Capacity (dough)	84 lb (38kg)
Capacity (volume)	10,57 gal (40lt)
Basin internal diameter	17 23/32"(450mm)
Basin internal height	10 1/4" (260mm)
Spiral diameter	7/8" (22mm)

**Two speeds machine not available with V240 1ph**

**NOTE:** MORETTI FORNI S.P.A. reserves the right to modify the characteristics of the products illustrated in this publication without prior notice

## iM 44/1RU - iM 44/2RU

[97 lb(44kg, raising head, 1/2 speeds, timer, rotating wheels)]



**NOTE:** The dimensions indicated in the views are in millimeters.

<b>A</b>			
Lenght 59 1/6" (1500mm) Power cable			

### EXTERNAL DIMENSIONS

External height	30 19/32" (777mm)
External depth	32 23/32" (831mm)
External width	21 1/4" (540mm)
Weight	304 lb (138kg)

### BASIN CAPACITY

Capacity (dough)	97 lb (44kg)
Capacity (volume)	13,21 gal (50lt)
Basin internal diameter	19 11/16" (500mm)
Basin internal height	10 5/8" (270mm)
Spiral diameter	15/16" (24mm)

### SHIPPING INFORMATION

Packed machinery:	
Max height	33 7/8" (860mm)
Max depth	34 21/32" (880mm)
Max width	22 7/16" (570mm)
Weight	322 lb (146kg)

### FEEDING AND POWER

Standard feeding	
1 speed	
A.C. V240 1ph	
Max power	1,5 kW
Ampère max	11,5A
2 speeds	
A.C. V208 3ph	
Max power	2,2 kW
Ampère max	9,0A
Frequency	60Hz

**Two speeds machine not available with V240 1ph**

**NOTE:** MORETTI FORNI S.P.A. reserves the right to modify the characteristics of the products illustrated in this publication without prior notice