

Remote Back Bar Coolers

ROYAL SERIES



BR72L-SSS-LRR
shown with optional 1" top

Standard Features

- 35" High without Top, 36" High with 1" Optional Top
- 24" Front to Back Depth (25" with Top)
- Heavy duty self-closing doors
- Swing door models: Stainless steel handles with built-in locks
- Sliding door models: Glass with black trim sliding doors
- Listed to NSF Standard 7 for open food storage
- Optional 1/3 HP condensing unit available
- Expansion valve installed in unit - Type 134A or R448A
- All stainless steel, coved corner interior
- One supply hook-up side
- 3/8" supply outlets, 1/4" supply inlets
- 1-Year parts only warranty (no labor)
- 1-Year compressor, (If purchased) parts only warranty (no labor)

| Base Model | Length | Doors | Amps | Bottle Capacity | Weight |
|------------|--------|-------|------|-----------------|----------|
| BR48 | 48" | 2 | 1.0 | 285 | 280 lbs. |
| BR72 | 72" | 3 | 1.5 | 480 | 395 lbs. |
| BR96 | 96" | 4 | 2.0 | 720 | 510 lbs. |

Case Capacity

| Model | Long Neck Bottles | 12 oz. Cans | Wine Bottles |
|-------|-------------------|-------------|--------------|
| BR48 | 13 | 20 | 136 |
| BR72 | 21 | 34 | 216 |
| BR96 | 30 | 40 | 288 |

Specifications

| | |
|----------------------|---|
| | 115 V, 1 Phase, 60 Hz Furnished with a terminal block inside the box for a hard wire connection (supplied by the end user) |
| Electrical | Dedicated 15 amp circuit recommended BR48: 1800 BTUs, 16°F-18°F BR72: 2300 BTUs, 16°F-18°F BR96: 3200 BTUs, 16°F-18°F |
| | 134A refrigerant valve installed (standard) Optional R448A expansion available |
| Refrigeration | Thermostat not included 30°F-40°F operating range (set at 35°F) unless specified otherwise |
| | 1/2" drain connection required for condensation. Drain line connection will be on the same side as the refrigeration line location selected |
| Plumbing | A 100V condensate evaporator pan may be used in place of a drain line but it must be installed in a good location. Consult with your refrigeration installation company and check local codes |
| Insulation | 2" thick foamed-in-place polyurethane |
| | 20 gauge stainless steel walls with coved corners |
| Interior | NSF epoxy coated durable wire shelves (one bottom and two adjustable shelves per door) |
| | Sides & Front: 20 gauge stainless steel |
| Exterior | Top: 20 gauge stainless steel (1" top option) Sliding Door 48" and 96" models doors only available in glass with black trim |

This equipment is intended for the storage and display of non-potentially hazardous bottle or canned products only.

This equipment is intended for use in an area where the ambient temperature typically does not exceed 75 °F.

Krowne • 100 Haul Rd. Wayne, NJ 07470 • P: (800) 631-0442 • F: (973) 872-1129 • support@krowne.com • krowne.com

Due to our commitment to continued product improvement, specifications are subject to change without notice.

Rev 0 • 2/2026 • No. 1.4 Remote Back Bar Coolers



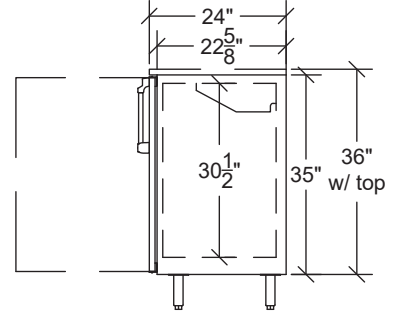
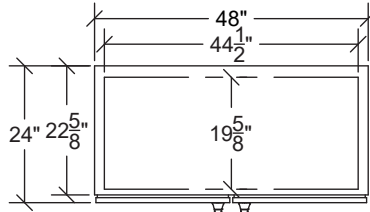
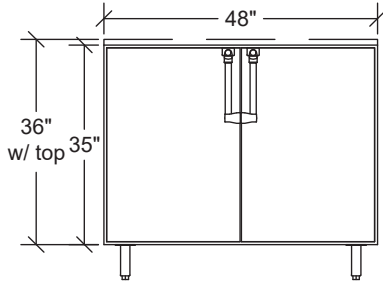
Remote Back Bar Coolers

ROYAL SERIES

Two Door (48")

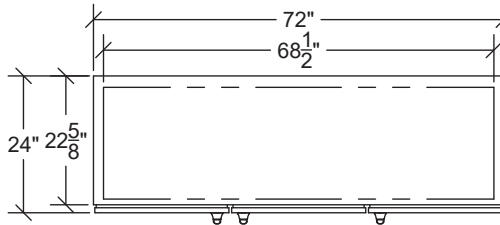
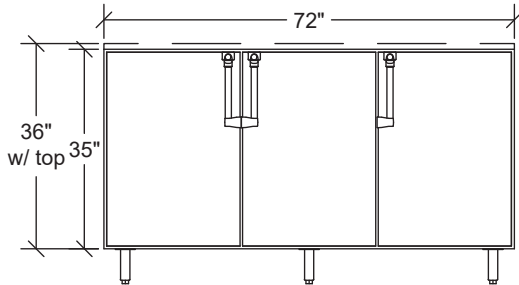
Models beginning BR48

This side view applies to Swing Door Base Models BR48, BR72, and BR96



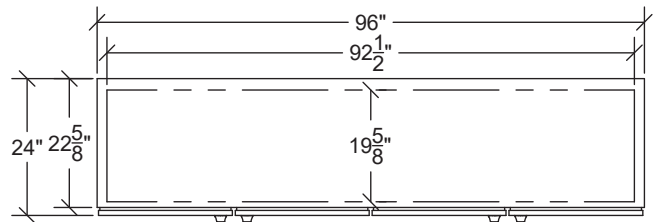
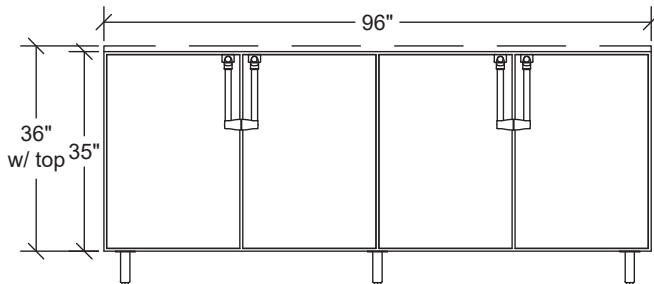
Three Door (72")

Models beginning BR72



Four Door (96")

Models beginning BR96



NOTE: Optional casters raise height 1" higher than wheel size. Optional 4" or 6" legs available.

