



[Scan for more info!](#)

Owners Manual
Quick Install
Quick Sizing
Install Layout
Parts List

CM-2-PB

Counter Mount Push Button Dispensing Tower



Model Options:

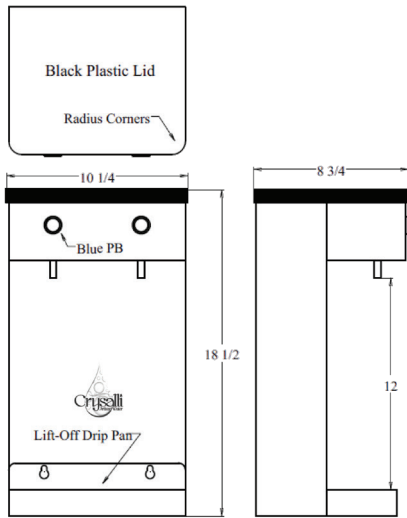
- CM-2-PB: Standard Unit with detachable Drain Pan
- CM-2-PB-RDP: Standard unit with Recessed Drain Pan

[See back for details](#)

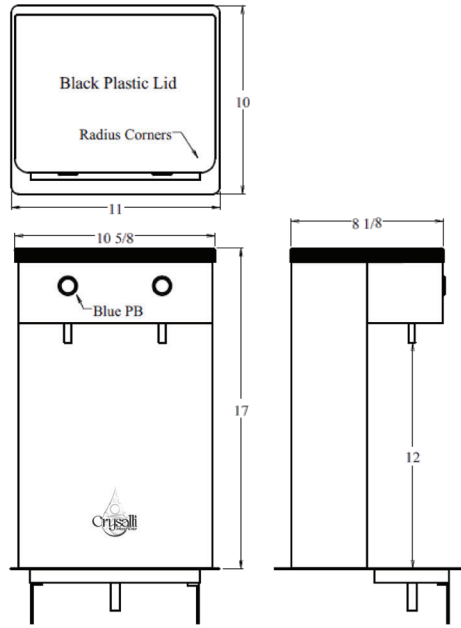
Specifications

- Dispenser only, for use with CR-UCM1 or CR-UCM2 Remote Chiller
- Great for Self Service Applications
- Blue lit LED Push Button Switches
Push and Hold to dispense
- 120v NEMA 5-15. 6' Electrical cord from 12VDC Transformer
- Lift off drip pan
- 12" Bottle clearance
- Mirrored Stainless Steel Finish

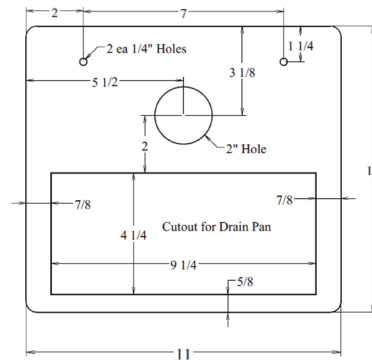
CM-2-PB



CM-2-PB-RDP



Recessed Drain Pan (RDP)
Cutout Dimensions



For Use With:



□ CR-UCM1



□ CR-UCM2



□ CR-KIT-UCM

Remote Chiller unit
32 ltr per hr @<36°
Up to 30ft max trunk line run
Still & Sparkling

Remote Chiller unit
64 ltr per hr @<36°
Up to 40ft max trunk line run
Still & Sparkling

Installation Kit for Remote Chiller Units, UCM1 & UCM2,
Includes: 5ft of CR-4L38 trunkline, Water pressure
reducer valve, various fittings and oetiker clamps,
extra tubing and insulation to install the filter system,
CR-UCM# and CBR or CM tower

