



Item #: \_\_\_\_\_  
 Quantity: \_\_\_\_\_  
 Model #: \_\_\_\_\_ HKS-   
 Project #: \_\_\_\_\_

## Cantilevered Countertop/Wall-Mount Dispensers

### REVERSIBLE!

All HKS models can be used as countertop or wall-mount dispensers



**Model #: (2)HKS-3** (wall-mount)

**Model #: HKS-2** (countertop)

Each shown with accessories

### Standard Features:

- An elegant twist on a classic design
- Each unit works as both a countertop and wall-mount dispenser
- 4" round cut-outs work with Steril-Sil silverware cylinders or 30 oz. containers, both of which are offered in a wide range of color and material options
- Cantilever design creates an open back and sides to show off your cylinder or container choice
- When used as a countertop dispenser, the flat front is an excellent branding space for marketing or decoration application
- When used as a wall-mount dispenser, multiple units can be stacked on top of each other to create a one-piece look. The unit has a small shelf at the top, great for small branding signs and other small items.
- Light weight and portable
- 304 stainless steel construction
- 3M non-marking feet
- NSF approved
- Made in the U.S.A.



### Product Specification:

Steril-Sil model #HKS- Cantilevered Countertop/Wall-Mount Dispenser. Single-piece construction for durability and ease of cleaning. Can be used as a countertop dispenser or a wall-mount dispenser. Hardware for wall-mounting not included. Includes 3M non-marking feet. 304 stainless steel construction. NSF approved. Made in the U.S.A.

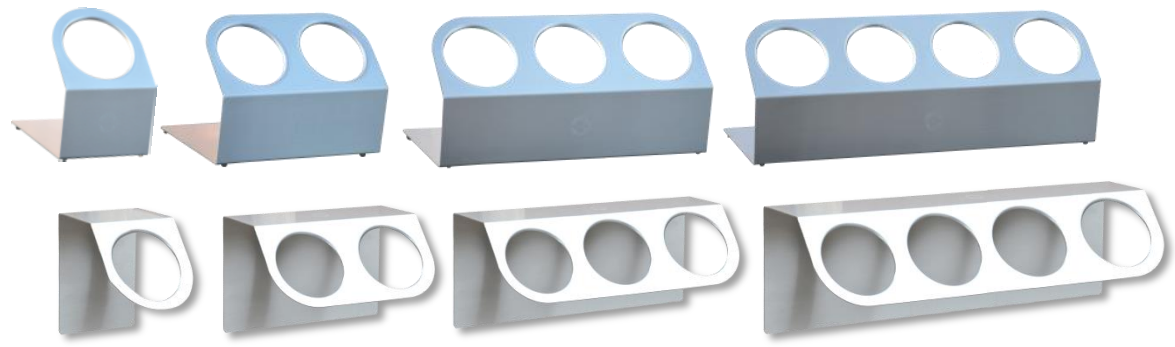
### Notes:

### Steril-Sil Company, LLC

Phone: 800-784-5537  
 Fax: 617-739-5063  
 Email: quotes@sterilsil.com  
 www.sterilsil.com



## Cantilevered Countertop/Wall-Mount Dispensers (cont'd)



Model #: HKS-1      Model #: HKS-2      Model #: HKS-3      Model #: HKS-4

### REVERSIBLE!

All HKS models can be used as countertop or wall-mount dispensers

### Cantilevered Countertop/Wall-Mount Dispensers

An elegant twist on a classic design with multiple applications

Model	Description	Length	Width	Height
HKS-1	1-hole countertop/wall-mount dispenser, cantilever design with open sides and back.	5.25"	6.50"	7.50"
HKS-2	2-hole countertop/wall-mount dispenser, cantilever design with open sides and back.	10.50"	6.50"	7.50"
HKS-3	3-hole countertop/wall-mount dispenser, cantilever design with open sides and back.	15.75"	6.50"	7.50"
HKS-4	4-hole countertop/wall-mount dispenser, cantilever design with open sides and back.	21.00"	6.50"	7.50"

### Available Accessories:



**S-500**  
Stainless Silverware Cylinder



**N-200 / G-300**  
Nylon High-Temp Cylinders



**RP-25 Color Series**  
Colored Silverware Cylinders



**E1-BS60E-SS**  
Drop-In Silverware Basket