



Rosita Bisani

SPECIALTY FOOD SERVICES EQUIPMENT

Gas-Fired Oven PG110



STANDARD FEATURES

- Gas fired stone hearth oven.
- Constructed from premium high grade alumina complete with heavy metal enclosure and stand.
- Oven walls average 7" thickness with completely sealed wall enclosures.
- Thermal insulation minimum 6" from top to bottom requiring 3" clearance to combustible materials.
- Maintenance free atmospheric infrared gas burner system in stainless steel.
- Large refractory mass enables strong thermal flywheel effect, wood savings, fast even baking, thermal stability.
- INTELLITOUCH Touch Screen Electronic Controls.
- Easy intuitive digital controls with thermostat and flame modulator.
- 220/60/1

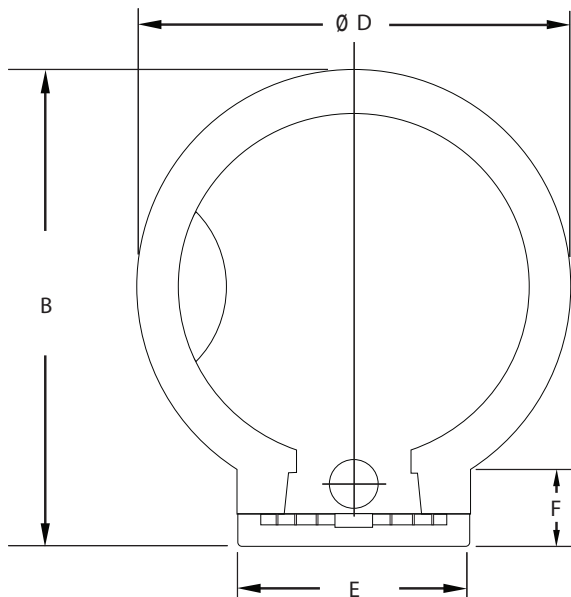
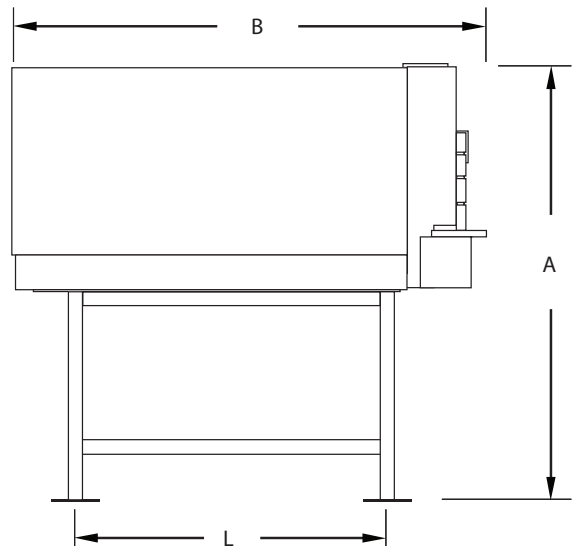
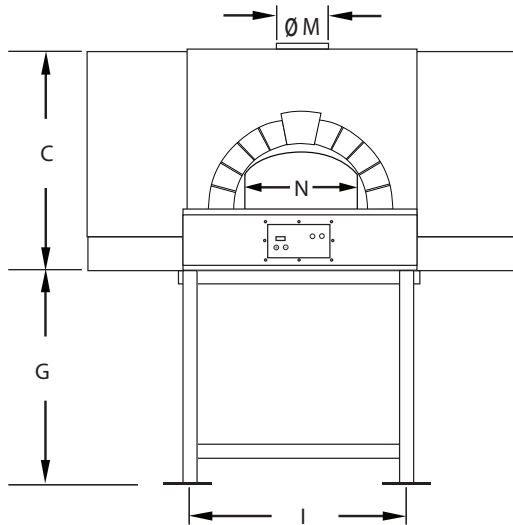
ITEM:

PROJECT:

DATE:

**Gas-Fired Oven
PG110**

Gas-Fired Oven PGI10



FLUE CONNECTION

All ovens are provided with an exhaust flue collar $\frac{1}{2}$ " or $2\frac{1}{2}$ " in height and 8" or 10" nominal diameter depending on model. The flue collar ($\varnothing H$) is located on oven top to provide a secure connection to the chimney. The oven flue collar is designed to be connected to chimney listed to UL-103HT. When working on gas only ovens, the oven is suitable for connection to Type B Gas Vent when used with the draft hood. When burning wood, an independent Flue evacuation system is required.

ELECTRICAL CONNECTION

Verify the power supply has the same rating as the oven.

AIR SUPPLY

These ovens require make-up air to replace combustion air and excess air taken out by the flue. Always check for adequate openings to allow required make-up air flow in. Check table included in operations manual.

Model/ Specifications	PGI10 (43")	Cooking Time	
Power	220/60/1	Capacity	(5) x 11"
Gas Fitting (inches)	$\frac{3}{4}$	Individual Pizza	2 ~ 3 minutes
BTU	100,000	Pan Pizza	4 ~ 6 minutes
Weight (lbs.) [Stand]	2,700 [150]		

Model/ Dimension (inches)	A	B	C	$\varnothing D$	E	F	G	I	L	$\varnothing M$	N
PGI10 (43")	74	65	38	58 $\frac{1}{4}$	31 $\frac{1}{2}$	11 $\frac{1}{2}$	36 $\frac{1}{4}$	29 $\frac{1}{8}$	42 $\frac{1}{2}$	8	21 $\frac{1}{2}$



Rosito Bisani Imports, Inc.
940 South La Brea Avenue, Los Angeles CA, 90036
Tel: 323-937-1888 • Fax: 323-938-0728 • Toll Free: 1-800-848-4444
E-mail: sales@rosito-bisani.com

www.rosito-bisani.com

530 South Henderson Road, Suite F, King of Prussia PA, 19406
Tel: 610-265-5950 • Fax: 888-576-8524

GAS-FIRED

