

**RETAILERS GUIDE
NO PRICING**

NEW



NEW



NEW



**John
BOOS**

Since 1887

FOODSERVICE EQUIPMENT

*No Modifications To Flyer Products At Flyer Pricing
Product Subject To Item Availability
All Prices Dealer Net*



SOLUTIONS TO HELP MAXIMIZE YOUR BUSINESS OPERATIONS

MOBILE HAND WASH STATION



Our Mobile Hand Wash Station is custom fabricated in the USA and provides a clean, hot and cold water source to any desired location with a GFI outlet. With 4 heavy duty locking casters, mobility couldn't be easier! Ideal for foodservice, catering, schools, medical facilities and much more.



- 16GA Stainless Steel Top
- 18GA Stainless Steel Panels
- 20GA Stainless Steel Hinged Door w/Magnetic Catches
- Marine Inverted "V" Front Edge
- 8" Rear Risers & Side Splashes
- Drop-In Sink
- Deck Mount Faucet 4" O.C.
- Soap and Paper Towel Dispenser
- Heavy Duty 5" Locking Casters
- Fresh Water Pump
- 2.5 GAL Water Heater
- CPS 5 GAL Clean Water Container
- CPS 6 GAL Grey Water Container
- GFI Outlet With 6 Foot Cord
- All Components are UL Listed



Model #	Sink Bowl Size (L x W x D)	L x W	Overall Work Height
MHS-2624-X	10" x 14" x 5"	26" x 24"	36"

REDUCE THE SPREAD OF GERMS WITH HANDS-FREE SINKS



HAND SINKS
OPTIONAL HANDS-FREE ELECTRIC FAUCET
 PAGES 28 & 33



KNEE ACTIVATED HAND SINK
WITH HINGED FRONT APRON AND FAUCET
 PAGE 30



PEDESTAL HAND SINK
WITH FOOT VALVE AND FAUCET
 PAGE 29

Hand Sanitizer Stand

NEW

- 16GA Type 300 Series Stainless Steel With #4 Polish Satin Finish
- Height Adjustable Support Arm Fits Up To 16" Tall Dispensers With Less Than 2" Diameter Collar
- 8" x 8" Base Fits Dispenser Bases Up To 7" In Diameter
- Base Plate Is Slotted For The Height Adjustable Support Arm Stability
- 16" x 16" Weighted Square Base For Added Stability With Leveling Feet
- Knockdown Design
- *Note: Dispenser Not Included*

Model #	Dimensions (L x W x H)	Maximum Overall Height
SDS-SB-2-X	16" x 16" x 24"	40"
SDS-SB-3-X	16" x 16" x 36"	52"



Hygiene Station

NEW

- 18GA Stainless Steel Construction
- Type 300 stainless steel with #4 polish satin finish
- Includes wall mount hand sanitizer dispenser
- Three compartments to hold latex gloves, masks, or tissues
- Made in the USA
- *Note: Gloves & Masks Not Included.*

Model #	Dimensions (L x W x H)
DS-SD1-3-X	20-1/2" x 4-9/16" x 11-1/8"



3-Compartment Mobile Sink

NEW

- 16GA Type 300 Stainless Steel Top With #4 Polish, Satin Finish
- 18GA Stainless Steel Panels
- 18GA Stainless Steel Hinged Doors With Magnetic Catches
- Marine Edge On Front
- 16GA 6" Rear Risers And Side Splashes
- (3) Weld In Sink Bowls 10" X 14" X 5"
- Side Mount Hand Sink With Weld In Sink Bowl 10" X 14" X 5"
- (2) Heavy Duty 10" Swing Spout Deck Mount Faucets, 4" O.C.
- Heavy Duty 5" Locking Casters
- (2) Water Supply Options: 20 GAL Clean Tank Or Constant Supply City Water
- Fresh Water Pump
- 2.5 GAL Water Heater
- 20 GAL Clean Water Tank
- 30 GAL Waste Water Tank
- Soap And Towel Dispenser
- GFI With 6' Cord
- All Components Are UL Listed



Model #	Overall Size	Sink Size
MCS3-1014-HS-X	75" x 28" x 43-13/16"	10" x 14" x 5"

SMRFSF0620



DST6-3049SSW-X

Dish Sorting Tables NSF

- 16GA 300 Series Stainless Steel Top
- Available In Flat Top or 10" Rear Riser
- Available In Fixed Stainless Steel Shelf or Bracing
- 2-1/4" Raised Edge
- Standard 1/2" MPT Drain
- Includes 1/2" FPT Ball Valve
- Ships Welded Setup



Includes 1/2" FPT Ball Valve



DST6-3049SBW-C-X

Flat Top With 2-1/4" Raised Edge Stainless Steel Legs & Fixed Undershelf

L x W	With Bullet Feet	With 5" Locking Casters
37" x 30"	DST6-3037SSW-X	DST6-3037SSW-C-X
49" x 30"	DST6-3049SSW-X	DST6-3049SSW-C-X
61" x 30"	DST6-3061SSW-X	DST6-3061SSW-C-X
73" x 30"	DST6-3073SSW-X	DST6-3073SSW-C-X
85" x 30"	DST6-3085SSW-X	DST6-3085SSW-C-X
97" x 30"	DST6-3097SSW-X	DST6-3097SSW-C-X

Flat Top With 2-1/4" Raised Edge Stainless Steel Legs & Fixed Bracing

L x W	With Bullet Feet	With 5" Locking Casters
37" x 30"	DST6-3037SBW-X	DST6-3037SBW-C-X
49" x 30"	DST6-3049SBW-X	DST6-3049SBW-C-X
61" x 30"	DST6-3061SBW-X	DST6-3061SBW-C-X
73" x 30"	DST6-3073SBW-X	DST6-3073SBW-C-X
85" x 30"	DST6-3085SBW-X	DST6-3085SBW-C-X
97" x 30"	DST6-3097SBW-X	DST6-3097SBW-C-X



DST6R10-3049SSW-X



DST6R10-3049SBW-X

10" Rear Riser Top With 2-1/4" Raised Edge Stainless Steel Legs & Fixed Undershelf

L x W	With Bullet Feet
37" x 30"	DST6R10-3037SSW-X
49" x 30"	DST6R10-3049SSW-X
61" x 30"	DST6R10-3061SSW-X
73" x 30"	DST6R10-3073SSW-X
85" x 30"	DST6R10-3085SSW-X
97" x 30"	DST6R10-3097SSW-X

10" Rear Riser Top With 2-1/4" Raised Edge Stainless Steel Legs & Fixed Bracing

L x W	With Bullet Feet
37" x 30"	DST6R10-3037SBW-X
49" x 30"	DST6R10-3049SBW-X
61" x 30"	DST6R10-3061SBW-X
73" x 30"	DST6R10-3073SBW-X
85" x 30"	DST6R10-3085SBW-X
97" x 30"	DST6R10-3097SBW-X

Storage Cabinets

- 18GA Type 400 Series Stainless Steel With #4 Polish, Satin Finish
- (4) Adjustable Stainless Steel Shelves
- Two Swing Lockable Doors
- Sloped Top
- Adjustable Bullet Feet
- Mounting Holes In Back Panel To Securely Fasten To Wall



Model #	Dimensions (L x W x H)
TCH-223684-X	22" x 36" x 84"
TCH-224884-X	22" x 48" x 84"



Hand Sink With Towel Dispenser And Side Splashes

Model #	Bowl Size (L x W x D)	Description	Side Splash
PBHS-W-0909-TD-SSLR-X	9" X 9" X 5" (2" Drain)	Towel Dispenser Deck Mount - 4" On-Center	LH & RH

Stainless Steel Table Bases

- Square Stainless Steel Table Base With 3" Round Column
- 17.5" Cast Iron Top Plate Spider
- Adjustable Leveling Feet
- Brushed Stainless Steel Finish
- Dining Height Table Bases Stand 28.25" To The Top Of The Spider
- Bar Height Table Bases Stand 40.25" To The Top Of The Spider
- Call Factory For Dining Top Quotes



ASSEMBLY VIDEO ONLINE AT [YOUTUBE.COM/JOHNBOOSCO](https://www.youtube.com/johnboosco)

RECOMMENDED DINING TOP SIZES			
Top Size	Qty Of Bases	Top Size	Qty Of Bases
SQUARE & RECTANGLE			
24" x 24"	1	24" x 60"	2
24" x 30"	1	24" x 72"	2
24" x 36"	1	24" x 84"	2
24" x 42"	1	24" x 96"	2
24" x 48"	1	30" x 60"	2
30" x 30"	1	30" x 72"	2
30" x 36"	1	30" x 84"	2
30" x 42"	1	30" x 96"	2
30" x 48"	1	36" x 48"	2
36" x 36"	1	36" x 60"	2
36" x 42"	1	36" x 72"	2
-	-	36" x 84"	2
-	-	36" x 96"	2
-	-	42" x 42"	2

RECOMMENDED DINING TOP SIZES	
Top Size	Qty Of Bases
ROUND	
24"	1
30"	1
36"	1
42"	1



STB-2230-X



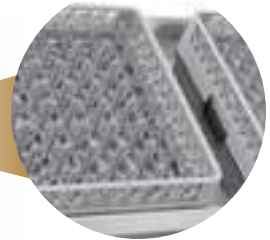
STB-2242-X

Base Spread	Spider Size	Dining Height Model #	Bar Height Model #
21-1/4" x 21-1/4"	17.5"	STB-2230-X	STB-2242-X

Mobile Bussing Table

NEW

- 16GA Type 300 Stainless Steel Top With Marine Edge
- Reinforced With 1" x 2" Channel Running Entire Length Of Table
- 1-1/2" Stallion Edge, Straight Turndown On Sides
- 16GA Slanted Sorting Shelf With Weep Hole
- Stainless Steel Base With Fixed Midshelf And Adjustable 18GA Undershaft
- Heavy Duty 5" Locking Casters
- Includes Scrap Hole
- Note: Does NOT Include Bussing Tubs or 16GAL Slim Jim Trash



SLANTED SORTING SHELF FOR GLASS RACKS

BT6-3063SSK-X

Model #	L x W
BT6-3063SSK-X	63" x 30"
BT6-3042SSK-X	42" x 30"

Prep Table With Sink And 3 Tier Drawer

NEW

- 14GA Type 300 Stainless Steel Top With 5" Riser And Turndown
- Reinforced With 1" x 2" Channel Running Entire Length Of Table
- 1-1/2" Stallion Edge, Straight Turndown On Sides
- Sink Bowl 10" x 14" x 8" On Left Side Of Top
- 3 Tier Draw 24-1/4" Wide On Right Side Unit
- Stainless Steel Base With Adjustable 18GA Undershaft
- Adjustable Flanged Feet



Model #	L x W x H
CGS-VTS54-X	54" x 24" x 31"

Mobile Drawer Cabinet

NSF

NEW

- 18GA Type 300 Stainless Steel
- Stainless Steel Flat Top With Front Stallion Edge
- 3 Tier Drawer (Available With and Without Locks)
- Removable Pans
- Heavy Duty 5" Locking Casters
- Overall Height 33-3/4"

Model #	Description	L x W
4CD4-2724-C-X	Locks - N/A	24" x 26-1/2"
4CD4-2730-C-X	Locks - N/A	30" x 26-1/2"
4CD4-2724-CL-X	Locks - Included	24" x 26-1/2"
4CD4-2730-CL-X	Locks - Included	30" x 26-1/2"



REMOVABLE PANS



4CD4-2724-CL-X



Manual Temperature Mixing Valve With Built-In Check Valves

NEW

Model #
PB-MV-X

Stainless Steel Microwave Shelf

NEW

- 14GA Type 300 Stainless Steel With #4 Polish, Satin Finish
- Finished with 1-9/16" bends on all sides
- Reinforced With 1-1/2" Square Tube Support Brackets To Mount To Wall
- All Joints Are Welded And Polished

Model #	L x W
CGS-MS2026-X	20" x 26"



Filler Table - Welded Set-Up

NEW

- 14GA Type 300 Stainless Steel Top With 5" Riser And Turndown
- Reinforced With 1" x 2" Channel Running Entire Length Of Table
- 1-1/2" Stallion Edge, Straight Turndown On Sides
- Stainless Steel Base With Fixed 18GA Undershelf
- Adjustable Flanged Feet
- Welded set-up

Model #	L x W x H
CGS-ST4R6-3016SSW-X	16" x 30" x 30"



Wire Shelf Support Bracket

NEW

- Securely Mounts Wire Shelving Post To Wall
- Available In Chrome Finish
- Wire Shelf Support Bracket Sold Individually
- Post Or Shelving Not Included

Model #
CWB-1-X



Bar Keepers Friend - Cleanser

NEW

- As a bleach-free product, this cleanser is an ideal stainless steel cleaner and can easily remove rust, tarnish, mineral deposits, and tough stains from most surfaces.
- SURFACES: Stainless Steel, Porcelain, Ceramic, Copper Alloys, Fiberglass, Corian, Brass, Bronze, Chrome, Aluminum.
- KITCHEN: Sinks, Cookware, Stove cooktops and exteriors, Countertops (non-stone), Backsplashes, Porcelain or Ceramic Dishes, Drained Floors.

Model #	Description
BKF-P12-X	12oz - Single
BKF-P12-12-X	12oz - 12 Pack



SMRFS-F0620

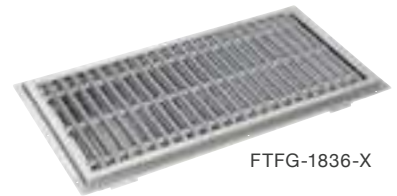
Floor Troughs NSF

- 14GA 300 Series Construction With Mounting Flange
- 4" Round Stainless Steel No-Hub Pipe Connection
- Includes Removable Drain Basket

★ Ships Within 5 Business Days!



FTSG-1836-X



FTFG-1836-X

Stainless Steel Grates

- Removable 3/16" x 1" Flatbar Subway Grating

Model #	L x W
FTSG-1224-X	24" x 12"
FTSG-1236-X	36" x 12"
FTSG-1248-X	48" x 12"
FTSG-1260-X	60" x 12"
FTSG-1272-X	72" x 12"
FTSG-1824-X	24" x 18"
FTSG-1836-X	36" x 18"
FTSG-1848-X	48" x 18"
FTSG-1860-X	60" x 18"

NEW!

Fiberglass Grates

- Removable Gray Fiberglass Subway-Style Grating With Non-Slip Surface

Model #	L x W
FTFG-1224-X	24" x 12"
FTFG-1236-X	36" x 12"
FTFG-1248-X	48" x 12"
FTFG-1260-X	60" x 12"
FTFG-1272-X	72" x 12"
FTFG-1824-X	24" x 18"
FTFG-1836-X	36" x 18"
FTFG-1848-X	48" x 18"
FTFG-1860-X	60" x 18"

NEW!



DRAIN BASKET



NEW

Flush Mount Mop Sinks

- 14GA Type 300 Stainless Steel
- Flush Floor Mount Design For Roll-In Mop Bucket
- Standard Backsplash With Left Hand And Right Hand Splashes
- Accommodates A 4" O.D. Diameter Drain Pipe 3-1/4" Long
- Optional Stainless Steel or Fiberglass Subway-Style Grating
- Removable Stainless Steel Grate With 3/16" Stainless Steel Bar Stock on 3/4" Centers
- 5° Breaks In Bottom For Positive Drainage Towards Drain

NEW



PBMS-FMSG-SSLR-X



PBMS-FMFG-SSLR-X

Model #	Dimensions (L x W x D)	Grate Material
PBMS-FMSG-SSLR-X	21-7/8" x 23-7/8" x 30-1/4"	Stainless Steel
PBMS-FMFG-SSLR-X	21-7/8" x 23-7/8" x 30-1/4"	Fiberglass

Mop Sinks NSF

- 16GA 300 Series Stainless Steel
- Includes 3-1/2" Free Flow Drain
- (Does not include faucet.)

Model #	Sink Size (L x W x D)	L x W
PBMS2016-6-X	20" x 16" x 6" - 6" High Water Level	24-5/8" x 19-1/8"
PBMS2016-12-X	20" x 16" x 12" - 12" High Water Level	24-5/8" x 19-1/8"
PBMS2424-6-X	24" x 24" x 6" - 6" High Water Level	28-5/8" x 27-3/8"
PBMS2424-12-X	24" x 24" x 12" - 12" High Water Level	28-5/8" x 27-3/8"
PBMS2820-6-X	28" x 20" x 6" - 6" High Water Level	32-5/8" x 23-1/8"
PBMS2820-12-X	28" x 20" x 12" - 12" High Water Level	32-5/8" x 23-1/8"



PBMS2016-6-X



PBMS2820-12-X

Model #	Description
PBF-SS-6-X	Service Faucet w/Vacuum Breaker



PBF-SS-6-X

Ventless Condensate Hoods NSF

- 18GA Stainless Steel
- Full Perimeter Gutter
- Removable Condensate Baffle
- Rear Drain Tube
- Welded Hanging Brackets

Note: Check local codes for approval.

CONDENSATION HOOD FUNCTIONALITY

1. CONDENSATION RISES
2. HITS INNER BAFFLE
3. DRIPS ONTO GUTTER
4. EXITS THROUGH REAR DRAIN TUBE



Model #	L x W
C2HB-42-2-X	42" x 42"

Condensate Hoods NSF

- 18GA Stainless Steel Construction
- Full Perimeter Gutter
- Welded Hanging Brackets

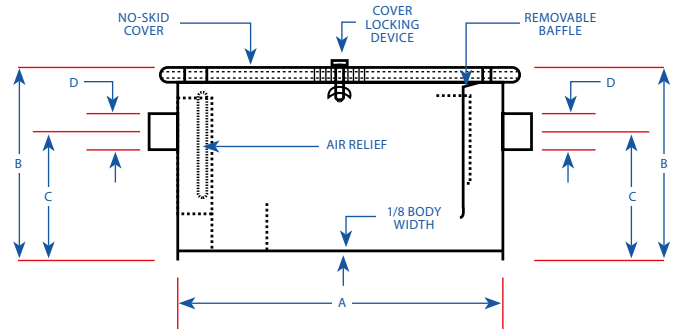
Model #	L x W	CFM
C2H-36-2-X	36" x 36"	450
C2H-42-2-X	42" x 42"	600
C2H-60-2-X	60" x 42"	875



Type II Exhaust Hoods NSF

- 18GA Stainless Steel Construction
- Front And Back Troughs
- (1) Vapor Proof Light
- Started Exhaust Duct Collar
- Welded Hanging Brackets

Model #	L x W
C2HL-4548-X	45" x 48"
C2HL-4560-X	45" x 60"
C2HL-4572-X	45" x 72"
C2HL-4584-X	45" x 84"
C2HL-4596-X	45" x 96"



Carbon Steel Grease Interceptors

Model #	Size	Width	G.P.M Capacity	Grease Capacity (lbs)	A	B	C	D
GT-8-X	8#	10.5"	4	8	14.2"	11.2"	7.5"	2"
GT-14-X	14#	13.5"	7	14	16.2"	18.3"	8.1"	2"
GT-20-X	20#	14.5"	10	20	20.1"	12.1"	8.1"	2"
GT-30-X	30#	16"	15	30	20.5"	13.8"	10.4"	2.5"
GT-40-X	40#	16"	20	40	22.5"	15"	11.5"	3"
GT-50-X	50#	17.5"	25	50	24.5"	16.5"	12"	3"
GT-70-X	70#	18"	35	70	28.5"	19.3"	14.1"	3.5"
GT-100-X	100#	22.25"	50	100	30.5"	21.5"	16.1"	4"

Janitor & Mat Washing Cabinet

- 18GA Type 300 Stainless Steel With #4 Polish Satin Finish
- (2) Swing Double Panel Doors With Lock Handle
- Mat Hangers
- (1) Oversized Sink 38" x 20" x 6" with 3-1/2" Drain
- (1) Side Mounted Mop/Broom Holder With Locking Cam
- (1) Fold Down Chemical Shelf
- (1) Service Faucet and 10' hose
- Vented Door Panels
- Includes (1) Heavy Duty Service Faucet (PBF-SS-6-X)
- Includes (1) 10' Service Faucet Hose (PB-HOSE-120-X)



Model #	Dimensions (L x W x H)	Mop Sink Size (L x W x H)
PBMC-432683-X	43" x 26" x 83"	38" x 20" x 6"

COMING SOON!

New Improved Design!
Call for availability.
 (Model #: PBMC-224884-X)



MAT HANGERS



FOLD DOWN
CHEMICAL SHELF

Beverage Unit Cabinet



NEW

- 14GA Type 300 Stainless Steel Top with 5" High Rear Backsplash
- Stallion Edge Front, Straight Turndown on Sides
- 18GA Type 400 Stainless Steel Base
- Front Hinged Doors
- Stainless Steel Legs & Adjustable Feet
- 6" Diameter Trash Chute
- Accommodates 16 GAL Slim Jim Trash Can. Not Included. Clear dimensions 15" W x 25-3/4" H.
- Overall Height 40-3/4"

Model #	Trash Chute	L x W
4BU4R5-3648-L-X	Left Side	48" x 36"
4BU4R5-3648-R-X	Right Side	48" x 36"
4BU4R5-3660-L-X	Left Side	60" x 36"
4BU4R5-3660-R-X	Right Side	60" x 36"
4BU4R5-3672-L-X	Left Side	72" x 36"
4BU4R5-3672-R-X	Right Side	72" x 36"



4BU4R5-3672-L-X



EDSC8-1560-X

Economy Dish Storage Cabinet



- 18GA 300 Series Stainless Steel
- Fixed Mid-Shelf

Model #	L x W
EDSC8-1548-X	48" x 15"
EDSC8-1560-X	60" x 15"
EDSC8-1572-X	72" x 15"
EDSC8-1848-X	48" x 18"
EDSC8-1860-X	60" x 18"
EDSC8-1872-X	72" x 18"

Deluxe Janitor Cabinet With Mop Sink

- 18GA Type 300 Stainless Steel With #4 Polish Satin Finish
- (2) SWING Double Panel Doors With Handles and Magnetic Latches
- Available In Left Side or Right Side Configuration
- MOP SINK Compartment Side Includes:
 - (1) Oversized Mop Sink 20" x 16" x 12" with 3-1/2" Drain
 - (1) Overhead Storage Shelf
 - (2) Side Mounted Mop/Broom Holder with Locking Cam
 - Panel-Less Back
- Storage Compartment Side Includes:
 - (3) STORAGE SHELVES
 - Bottom Storage Area
- Vented Side Panels
- Includes (1) Heavy Duty Service Faucet (PBF-SS-6-X)
- Includes (1) 10' Service Faucet Hose (PB-HOSE-120-X)



Model #	Dimensions (L x W x H)	Mop Sink Location
PBJC-4884-L-X	48" x 21-13/16" x 84"	LEFT
PBJC-4884-R-X	48" x 21-13/16" x 84"	RIGHT



MOP/BROOM HOLDER WITH LOCKING CAM



MOP SINK 20" x 16" x 12"

COMING SOON!

New Improved Design With NSF Certification!

Call for availability.

(Model #: PBJC-224884-L-X, PBJC-224884-R-X)

Janitor Cabinet With Mop Sink

- 18GA Type 300 Stainless Steel With #4 Polish, Satin Finish
- All Exposed Hardware Is Tamper Proof
- Includes Overhead Shelf For Chemical Storage
- Two Swing Lockable Louvered Doors
- Bottoms Of Bowls Formed For Drainage To 3-1/2" Diameter Die Stamped Opening
- Includes (1) Heavy Duty Service Faucet (PBF-SS-6-X)
- Includes (1) 10' Service Faucet Hose (PB-HOSE-120-X)
- Rear Mounted Mop Holder With Locking Cams
- Mounting Location Of Service Faucet Can Be Specified By Kitchen Equipment Contractor

Model #	Bowl (L x W x D)	Dimensions (L x W x H)
PBJC-252284-2D-X	20" x 16" x 12"	25" x 22" x 84"
PBJC-303084-X	24" x 24" x 12"	30" x 30" x 84"



PBJC-303084-X

COMING SOON!

New Improved Design With NSF Certification!

Call for availability.

(Model #: PBJC-222584-X, PBJC-303084-X)



Underbar Sinks

- 18GA 300 Series Stainless Steel
 - 10" x 14" x 10" Deep Bowls With Corner Drains
 - 4" O.C. Faucet Holes
 - Bowls Are Fabricated, Not Deep Drawn
 - Raised Ribbed Drain Boards
 - Raised Marine Edge On Front And Sides
 - Stainless Steel Legs & Bracing w/Adj Bullet Feet
 - Includes Wall Mounting Clips
- * **FLEXIBLE WATER LINE CONNECTORS RECOMMENDED WITH SHALLOW MOUNT FAUCETS (SOLD SEPARATELY)**



EUB3S72-2D-X



Optional Heavy Duty Shallow Splash Mount Faucet PBF-4SM2-10LF-X -



Optional Heavy Duty Deck Mount Faucet PBF-4DM-10LF-X -

Slim-Line Underbar Sinks - Splash Mount

- Includes Economy 4" Splash Mount Faucet w/10" Spout (PBF-W2-10LF-X) And Overflow Stand Pipes (PB-OVF-BS-X)

Model #	2 Compartment: Bowl Size (L x W x D)	Drain Board Size	L x W
EUB2S36SL-1LD-X/1RD-X	2 - 10" x 14" x 10" (LH or RH Drain Board)	(1) - 11"	36" x 18"
EUB2S48SL-1LD-X	2 - 10" x 14" x 10" (LH Drain Board)	(1) - 22-1/4"	48" x 18"
EUB2S48SL-2D-X	2 - 10" x 14" x 10" (LH & RH Drain Board)	(2) - 11-1/2"	48" x 18"

Model #	3 Compartment: Bowl Size (L x W x D)	Drain Board Size	L x W
EUB3S40SL-X	3 - 10" x 14" x 10"	N/A	40" x 18"
EUB3S48SL-1LD-X/1RD-X	3 - 10" x 14" x 10" (LH or RH Drain Board)	(1) - 11-7/8"	48" x 18"
EUB3S60SL-1LD-X/1RD-X	3 - 10" x 14" x 10" (LH or RH Drain Board)	(1) - 23-7/8"	60" x 18"
EUB3S60SL-2D-X	3 - 10" x 14" x 10" (LH & RH Drain Board)	(2) - 11-3/4"	60" x 18"
EUB3S72SL-2D-X	3 - 10" x 14" x 10" (LH & RH Drain Board)	(2) - 17-1/4"	72" x 18"
EUB3S84SL-2D-X	3 - 10" x 14" x 10" (LH & RH Drain Board)	(2) - 23-1/4"	84" x 18"
EUB3S96SL-2D-X	3 - 10" x 14" x 10" (LH & RH Drain Board)	(2) - 29-1/4"	96" x 18"

Model #	4 Compartment: Bowl Size (L x W x D)	Drain Board Size	L x W
EUB4S72SL-2D-X	4 - 10" x 14" x 10" (LH & RH Drain Board)	(2) - 12"	72" x 18"
EUB4S84SL-2D-X	4 - 10" x 14" x 10" (LH & RH Drain Board)	(2) - 18"	84" x 18"
EUB4S96SL-2D-X	4 - 10" x 14" x 10" (LH & RH Drain Board)	(2) - 24"	96" x 18"

Standard Underbar Sinks - Deck Mount

- Includes Economy 4" Deck Mount Faucet w/10" Spout (PBF-4-D-10LF-X) And Overflow Stand Pipes (PB-OVF-BS-X)

Model #	2 Compartment: Bowl Size (L x W x D)	Drain Board Size	L x W
EUB2S36-1LD-X/1RD-X	2 - 10" x 14" x 10" (LH or RH Drain Board)	(1) - 11"	36" x 21"
EUB2S48-1RD-X	2 - 10" x 14" x 10" (RH Drain Board)	(1) - 22-1/4"	48" x 21"
EUB2S48-2D-X	2 - 10" x 14" x 10" (LH & RH Drain Board)	(2) - 11-1/2"	48" x 21"

Model #	3 Compartment: Bowl Size (L x W x D)	Drain Board Size	L x W
EUB3S40-X	3 - 10" x 14" x 10"	N/A	40" x 21"
EUB3S48-1LD-X/1RD-X	3 - 10" x 14" x 10" (LH or RH Drain Board)	(1) - 11-7/8"	48" x 21"
EUB3S60-1LD-X/1RD-X	3 - 10" x 14" x 10" (LH or RH Drain Board)	(1) - 23-7/8"	60" x 21"
EUB3S60-2D-X	3 - 10" x 14" x 10" (LH & RH Drain Board)	(2) - 11-3/4"	60" x 21"
EUB3S72-2D-X	3 - 10" x 14" x 10" (LH & RH Drain Board)	(2) - 17-1/4"	72" x 21"
EUB3S84-2D-X	3 - 10" x 14" x 10" (RH & LH Drain Board)	(2) - 23-1/4"	84" x 21"
EUB3S96-2D-X	3 - 10" x 14" x 10" (RH & LH Drain Board)	(2) - 29-1/4"	96" x 21"

Model #	4 Compartment: Bowl Size (L x W x D)	Drain Board Size	L x W
EUB4S72-2D-X	4 - 10" x 14" x 10" (LH & RH Drain Board)	(2) - 12"	72" x 21"
EUB4S84-2D-X	4 - 10" x 14" x 10" (RH & LH Drain Board)	(2) - 18"	84" x 21"
EUB4S96-2D-X	4 - 10" x 14" x 10" (RH & LH Drain Board)	(2) - 24"	96" x 21"

Flexible Water Line Connectors - Shallow Mount Faucets

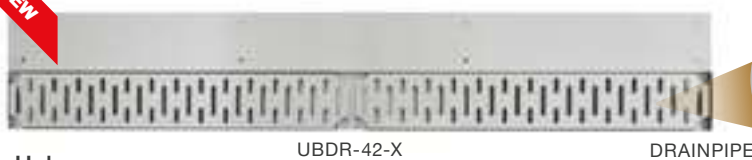
Model #	Description
PB-WL-36-X	(2) Hoses Per Kit, (1) Red, (1) Blue



Underbar Bar Drains



- 18GA Type 300 Stainless Steel With #4 Polish, Satin Finish
- 4" Front To Back Through
- 8" Front To Back Overall Depth
- 3/4" Deep Trough
- Removable Slotted Grate With Finger Holes
- Drainpipe 1" Long With 1/4" MPT Threads



Bar Drains

Model #	Dimensions (L x W)
UBDR-12-X	12" x 8"
UBDR-18-X	18" x 8"
UBDR-24-X	24" x 8"
UBDR-30-X	30" x 8"
UBDR-36-X	36" x 8"
UBDR-42-X	42" x 8"
UBDR-48-X	48" x 8"



UBDR-45-IC-X



UBDR-45-OC-X



UBDR-90-IC-X



UBDR-90-OC-X

Corner Fillers

Model #	Description
UBDR-90-IC-X	90° Inside Corner
UBDR-90-OC-X	90° Outside Corner
UBDR-45-IC-X	45° Inside Corner
UBDR-45-OC-X	45° Outside Corner

Underbar Side Splash Kit

- 18GA Type 300 Stainless Steel
- Side Splash Each Sold Separately
- Kits can be purchased uninstalled or pre-installed at the factory. Must specify underbar equipment for factory installation.



Side Splash Kit - Includes Hardware Installation

Model #	Description	L x H
EUBSS-12L-X/12R-X	LH or RH - (3) Screws	12" x 5"
EUBSS-18L-X/18R-X	LH or RH - (4) Screws	18" x 5"
EUBSS-21L-X/21R-X	LH or RH - (4) Screws	21" x 5"

Side Splash Kit - Pre-installed At Factory

Model #	Description	L x H
EUBSS-12L-I-X/12R-I-X	LH or RH - (3) Screws	12" x 5"
EUBSS-18L-I-X/18R-I-X	LH or RH - (4) Screws	18" x 5"
EUBSS-21L-I-X/21R-I-X	LH or RH - (4) Screws	21" x 5"

Underbar Corner Drain Board NSF

- 18GA 300 Series Stainless Steel
- Stainless Steel Legs & Bracing w/Adj Bullet Feet
- Stamped Ribbed Drain Boards
- 29-1/2" Working Height
- Corner Drain Board



Standard Underbar Corner Drain Boards

Model #	L x W
EUBD-2121-C-X	21" x 21"

Underbar Drain Boards NSF

- 18GA 300 Series Stainless Steel
- Stainless Steel Legs & Bracing w/Adj Bullet Feet
- Stamped Ribbed Drain Boards
- 29-1/2" Working Height

Slim-Line Underbar Drain Boards

Model #	L x W
EUBD-1218-X	12" x 18"
EUBD-1818-X	18" x 18"
EUBD-2418-X	24" x 18"
EUBD-3018-X	30" x 18"
EUBD-3618-X	36" x 18"
EUBD-4818-X	48" x 18"

Standard Underbar Drain Boards

Model #	L x W
EUBD-1221-X	12" x 21"
EUBD-1821-X	18" x 21"
EUBD-2421-X	24" x 21"
EUBD-3021-X	30" x 21"
EUBD-3621-X	36" x 21"
EUBD-4821-X	48" x 21"



EUBD-1818-X

SMRFSF0620

Underbar Chemical Storage Cabinet NSF

- 18GA 300 Series Stainless Steel
- 29-1/2" Working Height
- Stamped Ribbed LH Drain Board Sloped 1/2" Towards Sink
- 18GA Fabricated Sink Bowl (10" x 14" x 6")
- Raised Marine Edge
- Fixed Storage Shelves
- Stainless Steel Legs With Adjustable Feet
- 4" O.C. Deck Mount Faucet Holes (EUBCS-2421-X)
- 4" O.C. Splash Mount Faucet Holes (EUBCS-2418-X)
- * **REQUIRES SHALLOW SPLASHMOUNT FAUCET (SOLD SEPARATELY)**
- * **FLEXIBLE WATER LINE CONNECTORS RECOMMENDED WITH SHALLOW MOUNT FAUCETS (SOLD SEPARATELY)**



EUBCS-2421-X



PBF-4-D-10LF-X



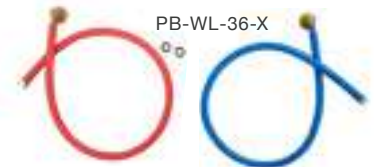
PBF-4SM2-10LF-X

Underbar Chemical Storage Cabinet - Deck Mount

Model #	L x W	Economy Deck Mount Faucets	Spout
EUBCS-2421-X	24" x 21"	PBF-4-D-10LF-X	10" Swing

Slim Line Underbar Chemical Storage Cabinet - Splash Mount

Model #	L x W	Heavy Duty Shallow Mount Faucets	Spout
EUBCS-2418-X *	24" x 18"	PBF-4SM2-10LF-X	10" Swing



PB-WL-36-X

Flexible Water Line Connectors - Shallow Mount Faucets

Model #	Description
PB-WL-36-X	(2) Hoses Per Kit, (1) Red, (1) Blue

Underbar Point Of Service Cabinet

- 18GA 300 Series Stainless Steel
- 11" High Back Splash
- 2" Rubber Grommet In Top Back Center To Route Cables
- Right Hand Hinged Door With Lock
- 14-1/4" Opening In Front Base To House CPU
- 2" Rubber Grommet In Center Back Panel To Route Cables
- Vented Door and Sides For Increased Air Circulation



2" RUBBER GROMMET

EUBPOS-2425R-X

Model #	L x W
EUBPOS-1825R-X	18" x 25"
EUBPOS-2425R-X	24" x 25"

4 Step Liquor Display NSF

- 18GA 300 Series Stainless Steel
- 4 Step Liquor Display
- Stainless Steel Legs & Bracing w/Adj Bullet Feet



EUBLD-1218-X

Slim-Line 18" Width

Model #	L x W
EUBLD-1218-X	12" x 18"
EUBLD-1818-X	18" x 18"
EUBLD-2418-X	24" x 18"

Standard 21" Width

Model #	L x W
EUBLD-1221-X	12" x 21"
EUBLD-1821-X	18" x 21"
EUBLD-2421-X	24" x 21"
EUBLD-3621-X	36" x 21"

Underbar Trash Receptacle Cover

- 16GA 300 Series Stainless Steel
- Removable Trash Chute
- Stainless Steel Legs & Bracing w/Adj Bullet Feet
- Accommodates Rubbermaid 16 GAL Slim Jim Trash Can (22" L x 11" W x 25" H) Not Included.



Model #	L x W	Description
EUBDWC-1825-X	18" x 25"	Mounts To Side Of Existing Equipment (32-1/2" Overall Height)
EUBDWC-1525-X	15" x 25"	Mounts To Left Or Right Side Of Existing Equipment (32-1/2" Overall Height)
EUBDWC-1225-X	12" x 25"	Mounts Between Existing Equipment

Underbar Blender Station

- 18GA 300 Series Stainless Steel
- Stainless Steel Legs & Bracing w/Adj Bullet Feet
- 29-1/2" Working Height
- 4" O.C. Faucet Holes
- * **REQUIRES SHALLOW SPLASHMOUNT FAUCET (SOLD SEPARATELY)**
- * **FLEXIBLE WATER LINE CONNECTORS RECOMMENDED WITH SHALLOW MOUNT FAUCETS (SOLD SEPARATELY)**



Slim-Line 18" Width

Model #	FAB Sink Bowl	L x W	Width
EUBBS-1410-SL-X *	10" x 14" x 6"	24"	18"

Standard 21" Width

Model #	FAB Sink Bowl	L X W	Width
EUBBS-0909-X *	9" x 9" x 6"	12"	21"
EUBBS-1410-X *	14" x 10" x 6"	18"	21"

Economy Shallow Mount Faucets

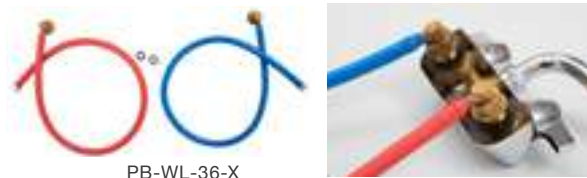
Model #	On-Center	Spout
PBF-W2-6LF-X	4"	6" Swing

Heavy Duty Shallow Mount Faucets

Model #	On-Center	Spout
PBF-4SM2-6LF-X	4"	6" Swing

Flexible Water Line Connectors - Shallow Mount Faucets

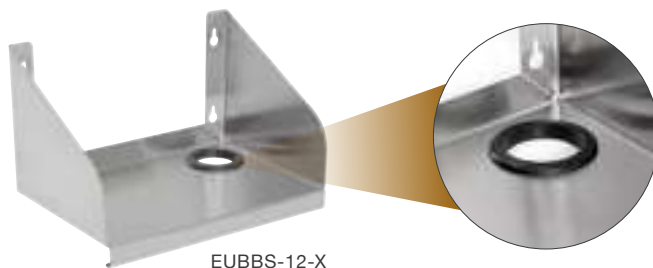
Model #	Description
PB-WL-36-X	(2) Hoses Per Kit, (1) Red, (1) Blue



Underbar Bolt-On Blender Shelf

- 18GA 300 Series Stainless Steel
- Bolt-On
- Electric Cord Cut-Out With Rubber Grommet

Model #	L x W
EUBBS-12-X	12" x 8"
EUBBS-18-X	18" x 8"



SMRFSF0620

Underbar Dump Sink w/Soap & Towel Dispenser NSF

- 18GA Stainless Steel
- Stainless Steel Scrap Basket
- Soap & Paper Towel Dispenser
- Stainless Steel Legs & Bracing w/Adj Bullet Feet
- 4" O.C. Faucet Holes
- * **REQUIRES SHALLOW SPLASHMOUNT FAUCET (SOLD SEPARATELY)**
- * **FLEXIBLE WATER LINE CONNECTORS RECOMMENDED WITH SHALLOW MOUNT FAUCETS (SOLD SEPARATELY)**



Slim-Line 18" Width

Model #	L x W	Economy Shallow Mount Faucets		Heavy Duty Shallow Mount Faucets	
			Spout		Spout
EUBDS-1218STD-X *	12" x 18"	PBF-W2-3GLF-X	3.5" GN	PBF-4SM2-3GLF-X	3.5" GN
		-	-	PBF-4SM2-6LF-X	6" SWING
EUBDS-1518STD-X *	15" x 18"	PBF-W2-3GLF-X	3.5" GN	PBF-4SM2-3GLF-X	3.5" GN
		-	-	PBF-4SM2-6LF-X	6" SWING

Standard 21" Width

Model #	L x W	Economy Shallow Mount Faucets		Heavy Duty Shallow Mount Faucets	
			Spout		Spout
EUBDS-1221STD-X *	12" x 21"	PBF-W2-3GLF-X	3.5" GN	PBF-4SM2-3GLF-X	3.5" GN
		-	-	PBF-4SM2-6LF-X	6" SWING
EUBDS-1521STD-X *	15" x 21"	PBF-W2-3GLF-X	3.5" GN	PBF-4SM2-3GLF-X	3.5" GN
		-	-	PBF-4SM2-6LF-X	6" SWING

Flexible Water Line Connectors - Shallow Mount Faucets

Model #	Description
PB-WL-36-X	(2) Hoses Per Kit, (1) Red, (1) Blue



Underbar Glass Rack Storage Cabinet NSF

- 18GA 300 Series Stainless Steel
- Length: 24" Width: 21"
- Ribbed Drainboard Top w/Drain
- EUBGRS-24-2: Supplied w/One Solid Fixed Mid-Shelf
- EUBGRS-24-3: Supplied w/Fixed Rack Storage Angles
- Stainless Steel Legs & Adj Feet
- Glass Racks Not Included

Model #	Description
EUBGRS-24-2-X	2 - Shelf
EUBGRS-24-3-X	3 - Shelf

Underbar Dump Sink

- 18GA 300 Series Stainless Steel
- FAB Sink Bowl: 14" x 10" x 6"
- Stainless Steel Legs & Bracing w/Adj Bullet Feet
- 29-1/2" Working Height
- 4" O.C. Faucet Holes
- * **REQUIRES SHALLOW SPLASHMOUNT FAUCET (SOLD SEPARATELY)**
- * **FLEXIBLE WATER LINE CONNECTORS RECOMMENDED WITH SHALLOW MOUNT FAUCETS (SOLD SEPARATELY)**



EUBDS-1014-SL-X



EUBDS-1218-X



EUBDS-1014-X



PBF-W2-6LF-X



PBF-4SM2-6LF-X



PBF-4SM2-10LF-X



PBF-4-D-10LF-X



PBF-4-D-LF-X



PBF-4DM-3GLF-X

Slim-Line 18" Width

Model #	L x W	Economy Shallow Mount Faucets	Spout	Heavy Duty Shallow Mount Faucets	Spout
EUBDS-1014-SL-X*	14" x 18"	PBF-W2-6LF-X	6" Swing	PBF-4SM2-6LF-X	6" Swing
EUBDS-1218-X *	12" x 18"	-	-	PBF-4SM2-10LF-X	10" Swing

Standard 21" Width

Model #	L x W	Economy Faucets	Spout	Heavy Duty Faucets	Spout
EUBDS-1014-X	14" x 21"	PBF-4-D-LF-X	3.5" GN	PBF-4DM-3GLF-X	3" GN
EUBDS-1221-X	12" x 21"	PBF-4-D-10LF-X	10" Swing	-	-

Flexible Water Line Connectors - Shallow Mount Faucets

Model #	Description
PB-WL-36-X	(2) Hoses Per Kit, (1) Red, (1) Blue



Glass Rack Dollies

- Aluminum Construction
- 3" Plate Casters
- Glass Racks Not Included

Model #	L x W
D2020-GT-X	21" x 21"



SMRFSF0620

Underbar Insulated Ice Bins w/ Cold Plate

Cold Plate

- Stainless Steel Circuits In Solid Aluminum Plate
- Available In 7-Circuit And 10-Circuit Cold Plate

Underbar Ice Bin

- 18GA 300 Series Stainless Steel
- Insulated Ice Bin 12" Deep w/Drain
- Stainless Steel Legs & Bracing w/Adj Bullet Feet
- 29-1/2" Working Height
- Ice Bin Lids Included



EUBIB-2421CP7-X



Slim-Line Ice Bin: 7-Circuit Cold Plate

Model #	Description	L x W
EUBIB-2418CP7-X	7-Circuit Cold Plate	24" x 18"
EUBIB-3018CP7-X	7-Circuit Cold Plate	30" x 18"
EUBIB-3618CP7-X	7-Circuit Cold Plate	36" x 18"
EUBIB-4818CP7-X	7-Circuit Cold Plate	48" x 18"

Slim-Line Ice Bin: 10-Circuit Cold Plate Premium Model

Model #	Description	L x W
EUBIB-3018CP10-X	10-Circuit Cold Plate	30" x 18"
EUBIB-3618CP10-X	10-Circuit Cold Plate	36" x 18"
EUBIB-4818CP10-X	10-Circuit Cold Plate	48" x 18"

Standard Ice Bin: 7-Circuit Cold Plate

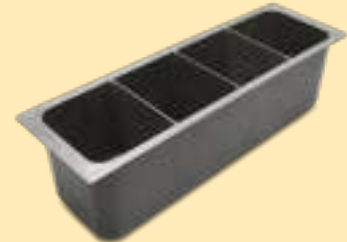
Model #	Description	L x W
EUBIB-2421CP7-X	7-Circuit Cold Plate	24" x 21"
EUBIB-3021CP7-X	7-Circuit Cold Plate	30" x 21"
EUBIB-3621CP7-X	7-Circuit Cold Plate	36" x 21"
EUBIB-4821CP7-X	7-Circuit Cold Plate	48" x 21"

Standard Ice Bin: 10-Circuit Cold Plate Premium Model

Model #	Description	L x W
EUBIB-3021CP10-X	10-Circuit Cold Plate	30" x 21"
EUBIB-3621CP10-X	10-Circuit Cold Plate	36" x 21"
EUBIB-4821CP10-X	10-Circuit Cold Plate	48" x 21"

Bottle Well Holders

Fits standard 21" Ice Bins with and without Cold Plates.



UB-BWH-X:

Underbar Ice Bins

- 18GA 300 Series Stainless Steel
 - Insulated Ice Bin 12" Deep w/Drain
 - Stainless Legs & Bracing w/Adj Bullet Feet
 - 29-1/2" Working Height
 - Ice Bin Lids Included
- NOTE: Underbar Speed Rail Sold Separately



EUBIB-12-2421-X

Slim-Line Underbar Ice Bins

Model #	L x W
EUBIB-2418-X	24" x 18"
EUBIB-3018-X	30" x 18"
EUBIB-3618-X	36" x 18"
EUBIB-4818-X	48" x 18"

Standard Underbar Ice Bins

Model #	L x W
EUBIB-12-2421-X	24" x 21"
EUBIB-12-3021-X	30" x 21"
EUBIB-12-3621-X	36" x 21"
EUBIB-12-4821-X	48" x 21"



Underbar Speed Rails

- 18 GA 300 Series Stainless Steel
- Single Speed Rail Dimension: 4" x 4"



EUBSR-30-X

EUBSR-2-30-X

Length	Single
24"	EUBSR-24-X
30"	EUBSR-30-X
36"	EUBSR-36-X
48"	EUBSR-48-X

Length	Double
24"	EUBSR-2-24-X
30"	EUBSR-2-30-X
36"	EUBSR-2-36-X
48"	EUBSR-2-48-X



PB-DIIB2820CP10-X



PB-DIIB2818-X

Underbar Insulated Drop-In Ice Bins NSF

- 14GA Type 300 Stainless Steel Deck
- 18GA Type 300 Stainless Steel Base
- Includes Ice Bin Lid and Drain

Drop-In Ice Bins With 10-Circuit Cold Plate

Model #	Overall Size (L x W X H)
PB-DIIB2820CP10-X	20" x 28" x 14-3/8"
PB-DIIB3420CP10-X	20" x 34" x 14-3/8"

Drop-In Ice Bins

Model #	Overall Size (L x W X H)
PB-DIIB1218-X	18" x 12" x 14-3/8"
PB-DIIB2218-X	18" x 22" x 14-3/8"
PB-DIIB2818-X	18" x 28" x 14-3/8"
PB-DIIB3418-X	18" x 34" x 14-3/8"

Drop-In Ice Bin With Water Station NSF

- 14GA Type 300 Stainless Steel Deck
- 18GA Type 300 Stainless Steel Base
- Includes Ice Bin Lid, Water Sink Grate, Removable Side Splash And Drains
- Optional With Or Without Glass Filler Faucet



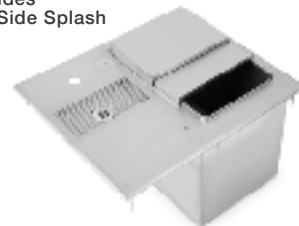
PB-DIIBWS1821-P-X



PB-DIIBWS1821-X



PB-DIIBWS2118-P-X



PB-DIIBWS2118-X

Model #	Basin Size (L x W x D)	Overall Size (L x W X H)	Faucet
PB-DIIBWS1821-P-X	13" x 9" x 11"	18" x 21" x 13"	INCLUDES FAUCET PBF-SGF-LF
PB-DIIBWS1821-X	13" x 9" x 11"	18" x 21" x 13"	N/A
PB-DIIBWS2118-P-X	9" x 13" x 11"	21" x 18" x 13"	INCLUDES FAUCET PBF-SGF-LF
PB-DIIBWS2118-X	9" x 13" x 11"	21" x 18" x 13"	N/A



Adjustable Manifold Housing



Does Not Include Soda Gun

Underbar Soda Gun Chase Filler NSF

- 18GA Type 300 Stainless Steel
- Mounts To Adjacent Underbar Equipment
- Slotted Key Holes On Back For Additional Mounting Options
- Removable Cover

Model #	Overall Size (L x D X H)
EUBSMH-0418-X	4" x 18-1/4" x 19-5/8"

Dipper Well & Faucet



PB-DWBA-X



PBF-DWF-G-X

Model #	Description
PB-DWBA-X	(1) Bowl 5-1/2" x 5-1/2" (1) Basket 5" x 4-1/2"
PBF-DWF-G-X	Dipper Well Faucet, Deck Mount, Lead Free, Chrome Plated



Single, Double and Multi Compartment Sinks - "B-Series" 16 GA

- 16GA 300 Series Stainless Steel Bowl And Deck
- 8" O.C. Faucet Holes
- Stainless Steel Legs And Adj Bullet Feet
- Includes Front To Back Adj Stainless Bracing



1B18244-X



1B18244-1D18L-X



1B18244-1D18R-X



1B18244-2D18-X

1 Compartment Sink - "B-Series" 16 GA

Model #	1 Compartment: Bowl Size (L x W x D)	L x W
1B16204-X	1 - 16" x 20" x 14"	21" x 25-1/2"
1B16204-1D18L-X/1D18R-X	1 - 16" x 20" x 14" (18" LH or RH Drain Board)	38" x 25-1/2"
1B16204-2D18-X	1 - 16" x 20" x 14" (18" LH & RH Drain Board)	55" x 25-1/2"
1B184-X	1 - 18" x 18" x 14"	23" x 23-1/2"
1B184-1D18L-X/1D18R-X	1 - 18" x 18" x 14" (18" LH or RH Drain Board)	40" x 23-1/2"
1B184-2D18-X	1 - 18" x 18" x 14" (18" LH & RH Drain Board)	57" x 23-1/2"
1B18244-X	1 - 18" x 24" x 14"	23" x 29-1/2"
1B18244-1D18L-X/1D18R-X	1 - 18" x 24" x 14" (18" LH or RH Drain Board)	40" x 29-1/2"
1B18244-2D18-X	1 - 18" x 24" x 14" (18" LH & RH Drain Board)	57" x 29-1/2"
1B18244-1D24L-X/1D24R-X	1 - 18" x 24" x 14" (24" LH or RH Drain Board)	46" x 29-1/2"
1B18244-2D24-X	1 - 18" x 24" x 14" (24" LH & RH Drain Board)	69" x 29-1/2"
1B244-X	1 - 24" x 24" x 14"	29" x 29-1/2"
1B244-1D24L-X/1D24R-X	1 - 24" x 24" x 14" (24" LH or RH Drain Board)	52" x 29-1/2"
1B244-2D24-X	1 - 24" x 24" x 14" (24" LH & RH Drain Board)	75" x 29-1/2"



2B18244-X



2B18244-1D18L-X



2B18244-1D18R-X



2B18244-2D18-X

2 Compartment Sinks - "B-Series" 16 GA

Model #	2 Compartment: Bowl Size (L x W x D)	L x W
2B16204-X	2 - 16" x 20" x 14"	37" x 25-1/2"
2B16204-1D18L-X/1D18R-X	2 - 16" x 20" x 14" (18" LH or RH Drain Board)	54" x 25-1/2"
2B16204-2D18-X	2 - 16" x 20" x 14" (18" LH & RH Drain Board)	71" x 25-1/2"
2B184-X	2 - 18" x 18" x 14"	41" x 23-1/2"
2B184-1D18L-X/1D18R-X	2 - 18" x 18" x 14" (18" LH or RH Drain Board)	58" x 23-1/2"
2B184-2D18-X	2 - 18" x 18" x 14" (18" LH & RH Drain Board)	75" x 23-1/2"
2B18244-X	2 - 18" x 24" x 14"	41" x 29-1/2"
2B18244-1D18L-X/1D18R-X	2 - 18" x 24" x 14" (18" LH or RH Drain Board)	58" x 29-1/2"
2B18244-2D18-X	2 - 18" x 24" x 14" (18" LH & RH Drain Board)	75" x 29-1/2"
2B244-X	2 - 24" x 24" x 14"	53" x 29-1/2"
2B244-1D24L-X/1D24R-X	2 - 24" x 24" x 14" (24" LH or RH Drain Board)	76" x 29-1/2"
2B244-2D24-X	2 - 24" x 24" x 14" (24" LH & RH Drain Board)	99" x 29-1/2"



3B18244-X



3B18244-1D18R-X



3B18244-1D18L-X



3B18244-2D18-X

3 Compartment Sinks - "B-Series" 16 GA

Model #	3 Compartment: Bowl Size (L x W x D)	L x W
3B16204-X	3 - 16" x 20" x 14"	53" x 25-1/2"
3B16204-1D18L-X/1D18R-X	3 - 16" x 20" x 14" (18" LH or RH Drain Board)	70" x 25-1/2"
3B16204-2D18-X	3 - 16" x 20" x 14" (18" LH & RH Drain Board)	87" x 25-1/2"
3B16204-2D24-X	3 - 16" x 20" x 14" (24" LH & RH Drain Board)	99" x 25-1/2"
3B16204-2D36-X	3 - 16" x 20" x 14" (36" LH & RH Drain Board)	123" x 25-1/2"
3B184-X	3 - 18" x 18" x 14"	59" x 25-1/2"
3B184-1D18L-X/1D18R-X	3 - 18" x 18" x 14" (18" LH or RH Drain Board)	76" x 25-1/2"
3B184-2D18-X	3 - 18" x 18" x 14" (18" LH & RH Drain Board)	93" x 25-1/2"
3B18244-X	3 - 18" x 24" x 14"	59" x 29-1/2"
3B18244-1D18L-X/1D18R-X	3 - 18" x 24" x 14" (18" LH or RH Drain Board)	76" x 29-1/2"
3B18244-2D18-X	3 - 18" x 24" x 14" (18" LH & RH Drain Board)	93" x 29-1/2"
3B18244-2D24-X	3 - 18" x 24" x 14" (24" LH & RH Drain Board)	105" x 29-1/2"
3B20304-2D20-X	3 - 20" x 30" x 14" (20" LH & RH Drain Board)	103" x 35-1/2"
3B20304-2D24-X	3 - 20" x 30" x 14" (24" LH & RH Drain Board)	111" x 35-1/2"
3B20304-2D30-X	3 - 20" x 30" x 14" (30" LH & RH Drain Board)	123" x 35-1/2"
3B244-X □□□□	3 - 24" x 24" x 14"	77" x 29-1/2"
3B244-1D24L-X/1D24R-X □□□□	3 - 24" x 24" x 14" (24" LH or RH Drain Board)	100" x 29-1/2"
3B244-2D24-X □□□□	3 - 24" x 24" x 14" (24" LH & RH Drain Board)	123" x 29-1/2"

Note: □□□□ (Supplied with 2 Sets of Faucet Holes)



4B18244-2D18-X

4 Compartment Sinks - "B-Series" 16 GA

Model #	4 Compartment: Bowl Size (L x W x D)	L x W
4B18244-2D18-X □□□□	4 - 18" x 24" x 14" (18" LH & RH Drain Board)	111" x 29-1/2"

Note: □□□□ (Supplied with 2 Sets of Faucet Holes)

Compartment Sink Side Splash

- 18GA 300 Stainless Steel
- Fits Left or Right Side Of Sink
- Sold Individually



Model #	Fits Bowl Width
PB-RES-18-X	18"
PB-RES-20-X	20"
PB-RES-24-X	24"



Single, Double and Multi Compartment Sinks: "E-Series" 18 GA

- 18GA 300 Series Stainless Steel Bowl And Deck
- Galvanized Legs And Adj Plastic Bullet Feet
- 8" O.C. Faucet Holes



E1S8-1620-12-X

12" Deep Bowl - 1 Compartment Sink - "E-Series" 18 GA

Model #	1 Compartment: Bowl Size (L x W x D)	L x W
E1S8-1620-12-X	1 - 16" x 20" x 12"	21" x 25-1/2"
E1S8-1620-12L18-X/12R18-X	1 - 16" x 20" x 12" (18" LH or RH Drain Board)	36-1/2" x 25-1/2"
E1S8-1620-12T18-X	1 - 16" x 20" x 12" (18" LH & RH Drain Board)	52" x 25-1/2"
E1S8-18-12-X	1 - 18" x 18" x 12"	23" x 23-1/2"
E1S8-18-12L18-X/12R18-X	1 - 18" x 18" x 12" (18" LH or RH Drain Board)	38-1/2" x 23-1/2"
E1S8-18-12T18-X	1 - 18" x 18" x 12" (18" LH & RH Drain Board)	54" x 23-1/2"

12" Deep Bowl - 2 Compartment Sinks - "E-Series" 18 GA

Model #	2 Compartment: Bowl Size (L x W x D)	L x W
E2S8-1620-12-X	2 - 16" x 20" x 12"	37" x 25-1/2"
E2S8-1620-12L18-X/12R18-X	2 - 16" x 20" x 12" (18" LH or RH Drain Board)	52-1/2" x 25-1/2"
E2S8-1620-12T18-X	2 - 16" x 20" x 12" (18" LH & RH Drain Board)	68" x 25-1/2"
E2S8-18-12-X	2 - 18" x 18" x 12"	41" x 23-1/2"
E2S8-18-12L18-X/12R18-X	2 - 18" x 18" x 12" (18" LH or RH Drain Board)	56-1/2" x 23-1/2"
E2S8-18-12T18-X	2 - 18" x 18" x 12" (18" LH & RH Drain Board)	72" x 23-1/2"

12" Deep Bowl - 3 Compartment Sinks - "E-Series" 18 GA

Model #	3 Compartment: Bowl Size (L x W x D)	L x W
E3S8-1220-12T12-X	3 - 12" x 20" x 12" (12" LH & RH Drain Board)	60" x 25-1/2"
E3S8-1416-12T12-X	3 - 14" x 16" x 12" (12" LH & RH Drain Board)	66" x 21-1/2"
E3S8-1620-12-X	3 - 16" x 20" x 12"	53" x 25-1/2"
E3S8-1620-12L18-X/12R18-X	3 - 16" x 20" x 12" (18" LH or RH Drain Board)	68-1/2" x 25-1/2"
E3S8-1620-12T18-X	3 - 16" x 20" x 12" (18" LH & RH Drain Board)	84" x 25-1/2"
E3S8-18-12-X	3 - 18" x 18" x 12"	59" x 23-1/2"
E3S8-18-12L18-X/12R18-X	3 - 18" x 18" x 12" (18" LH or RH Drain Board)	74-1/2" x 23-1/2"
E3S8-18-12T18-X	3 - 18" x 18" x 12" (18" LH & RH Drain Board)	90" x 23-1/2"

Multi Bowl Compartment Sinks - "E-Series" 18 GA

Model #	3 Compartment: Bowl Size (L x W x D)	L x W
E3S8-1014-10-X	3 - 10" x 14" x 10"	35" x 19-1/2"
E3S8-1014-10L15-X/10R15-X	3 - 10" x 14" x 10" (15" LH or RH Drain Board)	47-1/2" x 19-1/2"
E3S8-1014-10T15-X	3 - 10" x 14" x 10" (15" LH & RH Drain Board)	60" x 19-1/2"



E2S8-18-12T18-X



E3S8-18-12T18-X

Stainless Steel Legs & Feet

Model #	S/S Legs And Feet
SLEG-20B-4-X	Set of 4 - 14" Deep Bowls
SLEG-22B-4-X	Set of 4 - 12" Deep Bowls
SLEG-24B-4-X	Set of 4 - 10" Deep Bowls



Leg Bracing Kits - "E-Series" 18 GA Sinks

Model #	Description
EBK-G14-X	GALV Legs: 14" Bowls
EBK-G15-X	GALV Legs: 15" Bowls
EBK-G16-X	GALV Legs: 16" Bowls
EBK-G18-X	GALV Legs: 18" Bowls
EBK-G20-X	GALV Legs: 20" Bowls
EBK-G24-X	GALV Legs: 24" Bowls
EBK-G30-X	GALV Legs: 30" Bowls
EBK-S14-X	SS Legs: 14" Bowls
EBK-S15-X	SS Legs: 15" Bowls
EBK-S16-X	SS Legs: 16" Bowls
EBK-S18-X	SS Legs: 18" Bowls
EBK-S20-X	SS Legs: 20" Bowls
EBK-S24-X	SS Legs: 24" Bowls
EBK-S30-X	SS Legs: 30" Bowls



E1S8-1824-14-X



E1S8-1824-14L24-X



E1S8-1824-14R24-X



E1S8-1824-14T24-X

14" Deep Bowl - 1 Compartment Sink - "E-Series" 18 GA

Model #	1 Compartment: Bowl Size (L x W x D)	L x W
E1S8-15-14-X	1 - 15" x 15" x 14"	19" x 20-1/2"
E1S8-15-14L15-X/R15-X	1 - 15" x 15" x 14" (15" LH or RH Drain Board)	33" x 20-1/2"
E1S8-15-14T15-X	1 - 15" x 15" x 14" (15" LH & RH Drain Board)	47" x 20-1/2"
E1S8-1824-14-X	1 - 18" x 24" x 14"	23" x 29-1/2"
E1S8-1824-14L24-X/14R24-X	1 - 18" x 24" x 14" (24" LH or RH Drain Board)	44-1/2" x 29-1/2"
E1S8-1824-14T24-X	1 - 18" x 24" x 14" (24" LH & RH Drain Board)	66" x 29-1/2"
E1S8-24-14-X	1 - 24" x 24" x 14"	29" x 29-1/2"
E1S8-24-14L24-X/14R24-X	1 - 24" x 24" x 14" (24" LH or RH Drain Board)	50-1/2" x 29-1/2"
E1S8-24-14T24-X	1 - 24" x 24" x 14" (24" LH & RH Drain Board)	72" x 29-1/2"



E2S8-24-14-X



E2S8-24-14L24-X



E2S8-24-14R24-X



E2S8-24-14T24-X

14" Deep Bowl - 2 Compartment Sink - "E-Series" 18 GA

Model #	2 Compartment: Bowl Size (L x W x D)	L x W
E2S8-24-14-X	2 - 24" x 24" x 14"	53" x 29-1/2"
E2S8-24-14L24-X/14R24-X	2 - 24" x 24" x 14" (24" LH or RH Drain Board)	74-1/2" x 29-1/2"
E2S8-24-14T24-X	2 - 24" x 24" x 14" (24" LH & RH Drain Board)	96" x 29-1/2"



E3S8-1824-14L24-X



E3S8-1824-14R24-X



E3S8-1824-14T24-X

14" Deep Bowl - 3 Compartment Sink - "E-Series" 18 GA

Model #	3 Compartment: Bowl Size (L x W x D)	L x W
E3S8-15-14-X	3 - 15" x 15" x 14"	50-1/2" x 20-1/2"
E3S8-15-14L15-X/R15-X	3 - 15" x 15" x 14" (15" LH or RH Drain Board)	62-1/2" x 20-1/2"
E3S8-15-14T15-X	3 - 15" x 15" x 14" (15" LH & RH Drain Board)	75" x 20-1/2"
E3S8-1620-14T18-X	3 - 16" x 20" x 14" (18" LH & RH Drain Board)	84" x 25-1/2"
E3S8-18-14T18-X	3 - 18" x 18" x 14" (18" LH & RH Drain Board)	90" x 23-1/2"
E3S8-18-14T24-X	3 - 18" x 18" x 14" (24" LH & RH Drain Board)	102" x 23-1/2"
E3S8-1824-14L24-X/14R24-X	3 - 18" x 24" x 14" (24" LH or RH Drain Board)	80" x 29-1/2"
E3S8-1824-14T24-X	3 - 18" x 24" x 14" (24" LH & RH Drain Board)	104" x 29-1/2"
E3S8-24-14-X □□□□	3 - 24" x 24" x 14"	77" x 29-1/2"
E3S8-24-14L24-X/14R24-X □□□□	3 - 24" x 24" x 14" (24" LH or RH Drain Board)	98-1/2" x 29-1/2"
E3S8-24-14T24-X □□□□	3 - 24" x 24" x 14" (24" LH & RH Drain Board)	120" x 29-1/2"
E3S8-2030-14T24-X	3 - 20" x 30" x 14" (24" LH & RH Drain Board)	108" x 35-1/2"

Note: □□□□ (Supplied with 2 Sets of Faucet Holes)

14" Deep Bowl - 4 Compartment Sink - "E-Series" 18 GA

Model #	4 Compartment: Bowl Size (L x W x D)	L x W
E4S8-1620-14T18-X □□□□	4 - 16" x 20" x 14" (18" LH & RH Drain Board)	100" x 25-1/2"

Note: □□□□ (Supplied with 2 Sets of Faucet Holes)



Email Your Orders To: purchaseorders@johnboos.com • www.johnboos.com



3BCS-184-2D18-X

3 Compartment Corner Sinks

- 14" Deep Fabricated Bowls
- 8" O.C. Faucet Holes

16GA - "B-Series" - Stainless Steel Legs & Adjustable Bracing

Model #	Bowl Size (L x W x D)	L x W
3BCS-184-2D18-X	18" x 18" x 14" (18" LH & RH Drain Board)	58-1/2" x 23-1/2"

18GA - "E-Series" - Galvanized Legs & Adjustable Bracing

Model #	Bowl Size (L x W x D)	L x W
E3BCS-184-2D18-X	18" x 18" x 14" (18" LH & RH Drain Board)	58-1/2" x 23-1/2"
E3BCS-244-2D24-X	24" x 24" x 14" (24" LH & RH Drain Board)	75" x 29-1/2"

Detachable Drain Board
Sold Separately



Budget Sinks

- 18GA 430 Stainless Steel Construction
- Galvanized Legs With Adj Plastic Bullet Feet
- 8" O.C. Faucet Holes
- **NOT NSF CERTIFIED**

1 Bowl Budget Sink

Model #	Bowl Size (L x W x D)	L x W
B1S8-18-14-X	18" x 18" x 14"	21" x 21-1/2"
B1S8-1821-14-X	18" x 21" x 14"	21" x 24-1/2"
B1S8-24-14-X	24" x 24" x 14"	27" x 27-1/2"

2 Bowl Budget Sink

Model #	Bowl Size (L x W x D)	L x W
B2S8-18-12-X	18" x 18" x 12"	36" x 21-1/2"
B2S8-1821-12-X	18" x 21" x 12"	36" x 24-1/2"
B2S8-24-12-X	24" x 24" x 12"	48" x 27-1/2"

3 Bowl Budget Sink

Model #	Bowl Size (L x W x D)	L x W
B3S8-18-12-X	18" x 18" x 12"	57" x 21-1/2"
B3S8-1821-12-X	18" x 21" x 12"	57" x 24-1/2"
B3S8-24-12-X	24" x 24" x 12"	72" x 27-1/2"



Detachable Drain Boards

- 18GA 430 Stainless Steel Construction
- To Be Used With Budget Sink
- Screws Mount To Sink Legs
- Easy To Assemble And Disassemble

Model #	Description
BDDS8-18-X	Drain Board For 18" x 18" Budget Sink
BDDS8-1821-X	Drain Board For 18" x 21" Budget Sink
BDDS8-24-X	Drain Board For 24" x 24" Budget Sink



Mobile Soak Sink

- 16GA 300 Series Stainless Steel
- Marine Edge With Corner Bumpers
- Stainless Steel Legs w/ Locking Casters
- 20" Working Height w/Twist Lever Waste



Model #	Sink Size (L x W x D)
PB-SS-208-X	20" x 20" x 8"



EPT8R5-3060SSK-R-X

Economy Prep Worktables w/ Sink Bowl

- 18GA Stainless Steel Construction
- Optional Stainless Steel or Galvanized Legs and Undershelf
- Sink Bowl 16"x20"x10" deep with 4" O.C. Faucet Holes
- Table Punched for 4" Deck Mount Faucet (Faucet Not Included)

Stainless Steel Legs & Undershelf

Model #	Sink Size (L x W x D)	L x W
EPT8R5-3048SSK-L-X/SSK-R-X	16" x 20" x 10" (LH or RH)	48" x 30"
EPT8R5-3060SSK-L-X/SSK-R-X	16" x 20" x 10" (LH or RH)	60" x 30"
EPT8R5-3072SSK-L-X/SSK-R-X	16" x 20" x 10" (LH or RH)	72" x 30"

Galvanized Legs & Undershelf

Model #	Sink Size (L x W x D)	L x W
EPT8R5-3048GSK-L-X/GSK-R-X	16" x 20" x 10" (LH or RH)	48" x 30"
EPT8R5-3060GSK-L-X/GSK-R-X	16" x 20" x 10" (LH or RH)	60" x 30"
EPT8R5-3072GSK-L-X/GSK-R-X	16" x 20" x 10" (LH or RH)	72" x 30"

Prep Worktables w/Sink Bowl

- 16GA 300 Series Stainless Steel
- Includes 4" Deckmount Faucet And 10" Spout (PBF-4DM-10LF-X)
- Adjustable Undershelf

Prep Tables w/Galvanized Legs & Adjustable Undershelf

Model #	Sink Size (L x W x D)	L x W
EPT6R5-3048GSK-L-X/GSK-R-X	16" x 20" x 12" (LH or RH)	48" x 30"
EPT6R5-3060GSK-L-X/GSK-R-X	16" x 20" x 12" (LH or RH)	60" x 30"
EPT6R5-3072GSK-L-X/GSK-R-X	16" x 20" x 12" (LH or RH)	72" x 30"

Prep Tables w/Stainless Steel Legs & Adjustable Undershelf

Model #	Sink Size (L x W x D)	L x W
EPT6R5-3048SSK-L-X/SSK-R-X	16" x 20" x 12" (LH or RH)	48" x 30"
EPT6R5-3060SSK-L-X/SSK-R-X	16" x 20" x 12" (LH or RH)	60" x 30"
EPT6R5-3072SSK-L-X/SSK-R-X	16" x 20" x 12" (LH or RH)	72" x 30"



EPT6R5-3060GSK-L-X



EPT6R5-3060SSK-L-X



Prep Table With Sink & 3 Tier Drawer

- 14GA Type 300 Stainless Steel Top With 5" Riser And Turndown
- Reinforced With 1" x 2" Channel Running Entire Length Of Table
- 1-1/2" Stallion Edge, Straight Turndown On Sides
- Sink Bowl 10" x 14" x 8" On Left Side Of Top
- 3 Tier Draw 24-1/4" Wide On Right Side Unit
- Stainless Steel Base With Adjustable 18GA Undershelf
- Adjustable Flanged Feet

Model #	L x W x H
CGS-VTS54-X	54" x 24" x 31"



EPT6R10-DL2B-72L-X

Prep Tables w/Sinks

- 16GA 300 Series Stainless Top w/10" Clip-Down Riser
- (1) 16" x 20" x 8"
- (1) 16" x 20" x 4" Bowl
- 4" Deckmount Faucet w/10" Swing Spout (PBF-4DM-10LF-X)
- (1) Roller Bearing Utensil Drawer w/ S/S Removable Liner
- (1) Poly Cutting Board 16" x 21" x 3/4" Thick
- Stainless Steel Legs & Adj Undershelf

Model #	Sink Location	L x W
EPT6R10-DL2B-72L-X/72R-X	LH or RH	72" x 30"
EPT6R10-DL2B-96L-X/96R-X	LH or RH	96" x 30"

Pro-Bowl Dishtables - 16GA

- 16GA 300 Series Stainless Steel
- 20-7/8" Opening
- Soiled Dishtable Includes An Integrally Welded Bowl 20" x 20" x 8" with 8" O.C. Faucet Holes
- Stainless Steel Legs & Bracing w/Adj Stainless Bullet Feet

Clean Dishtables - Straight

Model #	Description	L x W
JDTC-20-26L-X/26R-X	26" Long (LH or RH)	26" x 30"
JDTC-20-36L-X/36R-X	36" Long (LH or RH)	36" x 30"
JDTC-20-48L-X/48R-X	48" Long (LH or RH)	48" x 30"
JDTC-20-60L-X/60R-X	60" Long (LH or RH)	60" x 30"
JDTC-20-72L-X/72R-X	72" Long (LH or RH)	72" x 30"
JDTC-20-96L-X/96R-X	96" Long (LH or RH)	96" x 30"

Soiled Dishtables - Straight - 20" x 20" x 8" Sink Bowl

Model #	Description	L x W
JDTS-20-36L-X/36R-X	36" Long (LH or RH)	36" x 30"
JDTS-20-48L-X/48R-X	48" Long (LH or RH)	48" x 30"
JDTS-20-60L-X/60R-X	60" Long (LH or RH)	60" x 30"
JDTS-20-72L-X/72R-X	72" Long (LH or RH)	72" x 30"



JDTC-20-60R-X



JDTS-20-60L-X



EDTC8-S30-R60-X



EDTS8-S30-L60-X

Dishtables - "E-Series" 18GA

- 18GA 300 Series Stainless Steel
- 20-7/8" Opening
- Soiled Dishtable Includes An Integrally Welded Bowl 20" x 20" x 8" With 8" O.C. Faucet Holes
- Galvanized Legs & Bracing w/Adj Plastic Bullet Feet

Note: ** Indicates 16" x 20" x 8" Sink Bowl

Clean Dishtables - Straight

Model #	Description	L x W
EDTC8-S30-L26-X/R26-X	26" Long (LH or RH)	26" x 30"
EDTC8-S30-L36-X/R36-X	36" Long (LH or RH)	36" x 30"
EDTC8-S30-L48-X/R48-X	48" Long (LH or RH)	48" x 30"
EDTC8-S30-L60-X/R60-X	60" Long (LH or RH)	60" x 30"
EDTC8-S30-L72-X/R72-X	72" Long (LH or RH)	72" x 30"

Soiled Dishtables - Straight - 20" x 20" x 8" Sink Bowl

Model #	Description	L x W
EDTS8-S30-L26-X/R26-X **	26" Long (LH or RH)	26" x 30"
EDTS8-S30-L36-X/R36-X	36" Long (LH or RH)	36" x 30"
EDTS8-S30-L48-X/R48-X	48" Long (LH or RH)	48" x 30"
EDTS8-S30-L60-X/R60-X	60" Long (LH or RH)	60" x 30"
EDTS8-S30-L72-X/R72-X	72" Long (LH or RH)	72" x 30"

Wall Mounted Sorting Shelves

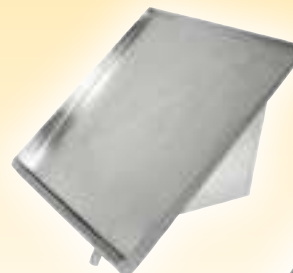
- 18GA 300 Series Stainless Steel
- Solid Shelf-Drain Tube In Corner

Solid Sorting Shelves

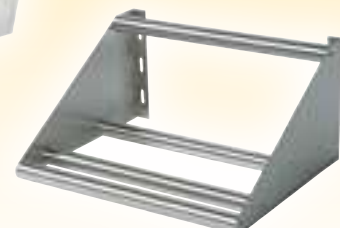
Model #	L x W
PB-SRW-21-X	21" x 18"
PB-SRW-42-X	42" x 18"
PB-SRW-63-X	63" x 18"

Tubular Sorting Shelves

Model #	L X W
BHS1822-TS-X	22" x 18"
BHS1842-TS-X	42" x 18"
BHS1863-TS-X	63" x 18"



PB-SRW-21-X



BHS1822-TS-X

Fax: (800) 433-2667



JDTS-20-60UCL-X

Pro-Bowl Undercounter Dishtables - 16GA

- 16GA 300 Series Stainless Steel
- Soiled Dish Table Includes An Integrally Welded Bowl 20" x 20" x 8" With 8" O.C. Faucet Holes
- Available In Left Side or Right Side Sink Bowl Location

Pro-Bowl Undercounter Dishtable 16 GA Stainless Steel Legs And Adj Metal Bullet Feet

Model #	Bowl Size (L x W x D)	L x W
JDTS-20-50UCL-X/50UCR-X	20" x 20" x 8", (LH or RH)	50" x 30"
JDTS-20-60UCL-X/60UCR-X	20" x 20" x 8", (LH or RH)	60" x 30"



EDTS8-S30-60UCL-X

Undercounter Dishtables - "E-Series" 18GA

- 18GA 300 Series Stainless Steel
- Soiled Dish Table Includes An Integrally Welded Bowl 20" x 20" x 8" With 8" O.C. Faucet Holes
- Available In Left Side or Right Side Sink Bowl Location

Undercounter Dishtable 18 GA Galvanized Legs And Adj Plastic Bullet Feet

Model #	Bowl Size (L x W x D)	L x W
EDTS8-S30-50UCL-X/50UCR-X	20" x 20" x 8", (LH or RH)	50" x 30"
EDTS8-S30-60UCL-X/60UCR-X	20" x 20" x 8", (LH or RH)	60" x 30"

Clean Dishtables/Pot Sinks "B-Series" 16GA

- 16GA 300 Series Stainless Steel Construction
- 18" x 24" x 14" Deep Sink Bowls
- 3 Rack Slides w/Storage Bracket
- 2 Drain Boards 24" Long
- Stainless Steel Legs & Bracing w/Adj Bracing Front To Back
- 8" O.C. Faucet Holes



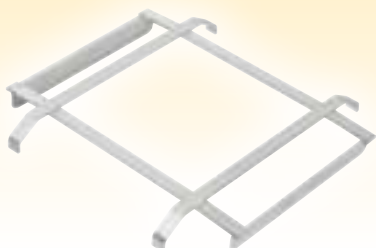
DT3B18244-2D18R-X

Clean Dishtables/Pot Sinks

Model #	Bowl Size (L x W x D)	L x W
DT3B18244-2D18L-X/2D18R-X	18" x 24" x 14" (18" LH or RH Drain Board) (NSF CERTIFIED)	91-1/2" x 30"
DT3B18244-2D24L-X/2D24R-X	18" x 24" x 14" (24" LH or RH Drain Board) (NSF CERTIFIED)	103" x 30"
DT3B244-2D24L-X/2D24R-X	24" x 24" x 14" (24" LH or RH Drain Board) (NSF CERTIFIED)	121-1/2" x 30"



Dishtable Rack Slide PB-DTS-20RS-X:



Pre-Rinse Basket PB-DTA-20-01-X:



SMRFSF0620

Pro-Bowl Hand Sinks

Model #	Bowl Size (L x W x D)	Description	Side Splash
A. PBHS-W-KVMB-1-X	14" x 10" x 5" (1-7/8" Drain)	Splash Mount - 1 Hole Centered (Goose Neck Spout And Knee Valves Included.)	N/A
PBHS-W-KVMB-SSP-X	14" x 10" x 5" (1-7/8" Drain)	Splash Mount - 1 Hole Centered (Goose Neck Spout And Knee Valves Included.)	LH & RH
B. PB-TD-0909-X	N/A	Wall Mount Towel Dispenser For 9"X9" Hand Sink	N/A
C. PBHS-W-0909-X	9" x 9" x 5" (1-7/8" Drain)	Splash Mount - 4" On-Center	N/A
PBHS-W-0909-P-X	9" x 9" x 5" (1-7/8" Drain)	Splash Mount - 4" On-Center (Goose Neck Faucet Included.)	N/A
D. PBHS-W-0909-SSLR-X	9" x 9" x 5" (1-7/8" Drain)	Splash Mount - 4" On-Center	LH & RH
PBHS-W-0909-P-SSLR-X	9" x 9" x 5" (1-7/8" Drain)	Splash Mount - 4" On-Center (Goose Neck Faucet Included.)	LH & RH
NEW! E. PBHS-W-0909-TD-SSLR	9" X 9" X 5" (2" Drain)	Towel Dispenser Deck Mount - 4" On-Center	LH & RH



Also Available With Side Splash



Pro-Bowl Hand Sinks

Model #	Bowl Size (L x W x D)	Faucet Location	Side Splash
F. PBHS-W-1410-X	14" x 10" x 5" (1-7/8" Drain)	Splash Mount - 4" On-Center	N/A
G. PBHS-W-1410-P-X	14" x 10" x 5" (1-7/8" Drain)	Splash Mount - 4" On-Center (Faucet Included)	N/A
H. PBHS-W-1410-SSL-X	14" x 10" x 5" (1-7/8" Drain)	Splash Mount - 4" On-Center	LH
I. PBHS-W-1410-SSR-X	14" x 10" x 5" (1-7/8" Drain)	Splash Mount - 4" On-Center	RH



Pro-Bowl Hand Sinks

Model #	Bowl Size (L x W x D)	Faucet Location	Side Splash
J. PBHS-W-1410-SSLR-X	14" x 10" x 5" (1-7/8" Drain)	Splash Mount - 4" On-Center	LH & RH
K. PBHS-W-1410-1-X	14" x 10" x 5" (1-7/8" Drain)	Splash Mount - 1 Hole Centered	N/A
L. PBHS-W-1410-1-SSLR-X	14" x 10" x 5" (1-7/8" Drain)	Splash Mount - 1 Hole Centered	LH & RH
M. PBHS-W-1410-P-SSLR-X	14" x 10" x 5" (1-7/8" Drain)	Splash Mount - 4" On-Center (Faucet Included)	LH & RH



Pro-Bowl Hand Sinks

Model #	Bowl Size (L x W x D)	Faucet Location	Side Splash
N. PBHS-W-1410-4D-X	14" x 10" x 5" (3-1/2" Drain)	Splash Mount - 4" On-Center	N/A
O. PBHS-W-1410-2DM-X	14" x 10" x 5"	Deck Mount - 4" On-Center	N/A
P. PBHS-W-1410-2DM-SSLR-X	14" x 10" x 5"	Deck Mount - 4" On-Center	LH & RH
Q. PB-STD-1410-X	N/A	Wall Mount Soap & Towel Dispenser Only, For 14x10 Hand Sink. Includes Soap Dispenser.	N/A



Pro-Bowl Hand Sinks

Model #	Bowl Size (L x W x D)	Faucet Location	Side Splash
R. PBHS-ADA-P-STD-X	14" x 16" x 5" (1-7/8" Drain)	Splash Mount - 4" On-Center, CSA CERT, (Removable Front Panel. Goose Neck Faucet, Soap & Paper Towel Dispenser Included.)	N/A
S. PBHS-ADA-P-STD-SSLR-X	14" x 16" x 5" (1-7/8" Drain)	Splash Mount - 4" On-Center	LH & RH
T. PBHS-W-1416ADAS-X	14" x 16" x 5" (1-7/8" Drain)	Splash Mount 4" On-Center	N/A
U. PBHS-W-1616-X	16" x 16" x 10" (3-1/2" Drain)	Deck Mount 1 Hole Centered	N/A
V. PBHS-W-1616-SSLR-X	16" x 16" x 10" (3-1/2" Drain)	Deck Mount 1 Hole Centered	LH & RH



CSA CERTIFIED ONLY

CERTIFICATION N/A

Hand Sink Side Splash Kit

- 18GA Type 300 Stainless Steel
- Side Splash Each Sold Separately
- Includes Installation Hardware



Hand Sink Side Splash Kit - Includes Installation Hardware

Model #	Description	Size (LxH)
PB-HSS-99L-X/99R-X	LH or RH	14-1/2" x 10"
PB-HSSS1410L-X/1410R-X	LH or RH - SM Faucet	15-1/2" x 10"
PB-HSSD1410L-X/1410R-X	LH or RH - DM Faucet	17" x 10"

Pedestal Hand Sink

- 16GA Type 300 Stainless Steel
- Drain Size: 3-1/2"
- Removable Access Panel On Right Side
- Mounts Securely To The Floor
- Includes Foot Valve and Gooseneck Faucet (PB-FV-2LF-X)



PB-FV-2LF-X



PBHS-F-1410-X

Model #	Bowl Size (L x W x H)
PBHS-F-1410-X	14" x 10" x 5"

Hand Sink With Eye Wash ^{NSF} Knee Activated Faucet With Hinged Front Apron

- Type 300 Stainless Steel
- Deep Drawn Bowl: 14" x 10" x 5"
- Drain Size: 1-7/8"
- Includes Eye Wash Attachment
- Knee Activated Faucet With Hinged Front Apron

EYE WASH DISCLAIMER

IMPORTANT: Faucet-mounted eyewash requires two motions to operate (turn on water, pull knob to activate eyewash flow). Therefore, John Boos does not believe that these units meet the provisions of ANSI Z358.1-2014 as eyewash units. These units are intended solely as supplemental units in addition to dedicated, plumbed eyewash equipment installed in the workplace. Faucet-mounted eyewashes should be used with cold or warm water only. Use of hot water might cause scalding. Eyewash attachment not to be used with electronic faucets.



PBHS-W-KV1APS-EW-SSLR-X



EYE WASH ATTACHMENT



KNEE ACTIVATED FAUCET WITH HINGED FRONT APRON

Model #	Sink Size (L x W x D)	Faucet Location	Side Splash
PBHS-W-KV1APS-EW-X	17" x 15-1/2" x 22"	Splash Mount - 1 Hole Centered	N/A
PBHS-W-KV1APS-EW-SSLR-X	17" x 15-1/2" x 22"	Splash Mount - 1 Hole Centered	LH & RH

Hand Sink With Knee Activated Faucet With Hinged Front Apron ^{NSF}

- Type 300 Stainless Steel
- Deep Drawn Bowl: 14" x 10" x 5"
- Drain Size: 1-7/8"
- Knee Activated Faucet With Hinged Front Apron



KNEE ACTIVATED FAUCET WITH HINGED FRONT APRON

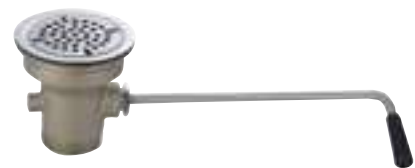
Model #	Sink Size (L x W x D)	Faucet Location	Side Splash
PBHS-W-KV1APS-X	17" x 15-1/2" x 22"	Splash Mount - 1 Hole Centered	N/A
PBHS-W-KV1APS-SSLR-X	17" x 15-1/2" x 22"	Splash Mount - 1 Hole Centered	LH & RH

Wall Mount Side Splash

- 18GA Type 300 Stainless Steel
- Side Splash Each Sold Separately



Model #	Description	Size (L x H)
WMSG-2424-X	LH or RH	24" x 24"



Lever Drains

Model #	Description
PB-LWR-1-X	Twist, 3.5" Drain Opening, 2" Outlet
PB-LWS-1-X	Straight, 3.5" Drain Opening, 2" Outlet



Drop-In Hand Sinks

1 Bowl

Model #	Bowl Size (L x W x D)	Sink Size (L x W x D)	Certification/Description	Side Splash
M. PB-DISINK090905-X	9" x 9" x 5"	12" x 14" x 5"	NSF® COMPONENT	N/A
PB-DISINK090905-SSLR-X	9" x 9" x 5"	12" x 14" x 5"	NSF® COMPONENT	LH & RH
N. PB-DISINK151506-X	12-1/2" x 10-1/2" x 6"	15" x 15" x 6"	NSF® COMPONENT	N/A
O. PB-DISINK101405-X	10" x 14" x 5"	12-1/4" x 18" x 5"	NSF® COMPONENT, CSA®	N/A
P. PB-DISINK101410-X	10" x 14" x 10"	12-1/4" x 18" x 10"	NSF® COMPONENT, CSA®	N/A
Q. PB-DISINK101405-P-SSLR-X	10" x 14" x 5"	12-1/2" X 18-3/4" X 10"	NSF® COMPONENT, CSA® (Faucet Included: PBF-4-DLF)	LH & RH
R. PB-DISINK101410-P-SSLR-X	10" x 14" x 10"	12-1/2" X 18-3/4" X 10"	NSF® COMPONENT, CSA® (Faucet Included: PBF-4-DLF)	LH & RH
S. PB-DISINK201608-X	20" x 16" x 8"	23-5/8" x 21-5/8" x 8"	NSF® COMPONENT	N/A
T. PB-DISINK201612-X	20" x 16" x 12"	23-5/8" x 21-5/8" x 12"	NSF® COMPONENT	N/A
U. PB-DISINK282012-X	28" x 20" x 12"	31-5/8" x 25-5/8" x 12"	NSF® COMPONENT	N/A
V. PB-DISINK091106-TD-X	9" x 11" x 6"	16-1/2" x 17-1/2" x 17"	N/A (TOWEL DISPENSER)	LH & RH
W. PB-DISINK091106-STD-X	9" x 11" x 6"	16-1/2" x 17-1/2" x 17"	N/A (SOAP & TOWEL DISPENSER)	LH & RH

2 Bowl

Model #	Bowl Size (L x W x D)	Sink Size (L x W x D)	Certification/Description	Side Splash
X. PB-DISINK101410-2-X	10" x 14" x 10" (2 Bowl)	24" x 18" x 10"	NSF® COMPONENT, CSA®	N/A
PB-DISINK141610-2-X	14" x 16" x 10" (2 Bowl)	33" x 22" x 10"	NSF® COMPONENT	N/A
PB-DISINK201612-2-X	20" x 16" x 12" (2 Bowl)	45" x 22" x 12"	NSF® COMPONENT	N/A

3 Bowl

Model #	Bowl Size (L x W x D)	Sink Size (L x W x D)	Certification/Description	Side Splash
Y. PB-DISINK101410-3-X	10" x 14" x 10" (3 Bowl)	36" x 18" x 10"	NSF® COMPONENT, CSA®	N/A
Z. PB-DISINK162012-3-X (INCLUDES 2 SETS OF FAUCET HOLES)	16" x 20" x 12" (3 Bowl)	54" x 24" x 12"	NSF® COMPONENT	N/A

SMRFSF0620



Low-Lead Faucets

Environmentally Friendly! Less than .25% lead within brass alloy content for healthier drinking water.

- 1/4" Turn Ceramic Cartridges
- Color Coded Hot & Cold Indicators
- Double O-Ring Spout Seal
- High Polished Nickel Chrome Finish

Heavy Duty Faucets

Model #	On-Center	Description	Spout
A. PBF-8-SLF-X	8"	Splash Mount	8" Swing
PBF-10-SLF-X	8"	Splash Mount	10" Swing
PBF-12-SLF-X	8"	Splash Mount	12" Swing
PBF-14-SLF-X	8"	Splash Mount	14" Swing
B. PBF-18-DJSLF-X	8"	Splash Mount	18" Swing - Double
PBF-4SM-3MGLF-X	4"	Splash Mount	3" Gooseneck
C. PBF-4SM-3GLF-X	4"	Splash Mount	3.5" Gooseneck
PBF-4SM-5GLF-X	4"	Splash Mount	5" Gooseneck
D. PBF-4DM-3GLF-X	4"	Deck Mount	3.5" Gooseneck
PBF-4DM-5GLF-X	4"	Deck Mount	5" Gooseneck
E. PBF-4DM-6LF-X	4"	Deck Mount	6" Swing
PBF-4DM-10LF-X	4"	Deck Mount	10" Swing
PBF-4DM-12LF-X	4"	Deck Mount	12" Swing

NEW

Economy Faucets

Model #	On-Center	Description	Spout
F. PBF-4-S-LF-X	4"	Splash Mount	3.5" Gooseneck
G. PBF-4-D-LF-X	4"	Deck Mount	3.5" Gooseneck
PBF-4-D-10LF-X	4"	Deck Mount	10" Swing

Heavy Duty Shallow Mount Faucets

Model #	On-Center	Description	Spout
H. PBF-4SM2-6LF-X	4"	Shallow Splash Mount	6" Swing
PBF-4SM2-8LF-X	4"	Shallow Splash Mount	8" Swing
PBF-4SM2-10LF-X	4"	Shallow Splash Mount	10" Swing
I. PBF-4SM2-3GLF-X	4"	Shallow Splash Mount	3.5" Gooseneck
PBF-4SM2-5GLF-X	4"	Shallow Splash Mount	5" Gooseneck

Economy Shallow Mount Faucets

Model #	On-Center	Description	Spout
J. PBF-W2-6LF-X	4"	Shallow Splash Mount	6" Swing
PBF-W2-8LF-X	4"	Shallow Splash Mount	8" Swing
K. PBF-W2-3GLF-X	4"	Shallow Splash Mount	3.5" Gooseneck

Pre-Rinse Unit

Model #	On-Center	Description	Spout
L. PB-PRW-1LF-X	8"	Splash Mount	Pre-Rinse Unit

Add-On Faucet

Model #	Spout
M. PB-AD-8LF-X	8" Swing Add-On
PB-AD-10LF-X	10" Swing Add-On
PB-AD-12LF-X	12" Swing Add-On
PB-AD-14LF-X	14" Swing Add-On

Flexible Water Line Connectors - Shallow Mount Faucets

Model #	Description
N. PB-WL-36-X	(2) Hoses Per Kit, (1) Red, (1) Blue

Hands-Free Faucet With Electric Sensor

Model #	Description	Spout
O. PBF-SEF3GLF	Splash Mount With Electric Sensor	3" Gooseneck

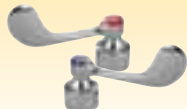
NEW

Manual Temperature Mixing Valve With Built-In Check Valves

Model #	Description
P. PB-MV-X	

NEW

S/S Wrist Blades



Model #	Description
PB-WR-X	1 Pair, Use w/ Heavy Duty Faucets Only



GS6-3048SSK-X

Equipment Stands -16GA

- 16GA Stainless Steel Top
- 18GA Adjustable Undershef
- GALV or Stainless Steel Legs And Adj Bullet Feet
- 1.5" High Rear and Side Risers
- 24" Overall Height

GALV Legs & Adj Undershef

Model #	L x W
GS6-3015GSK-X	15" x 30"
GS6-3018GSK-X	18" x 30"
GS6-3024GSK-X	24" x 30"
GS6-3036GSK-X	36" x 30"
GS6-3048GSK-X	48" x 30"
GS6-3060GSK-X	60" x 30"
GS6-3072GSK-X	72" x 30"

Stainless Steel Legs & Adj Undershef

Model #	L x W
GS6-3015SSK-X	15" x 30"
GS6-3018SSK-X	18" x 30"
GS6-3024SSK-X	24" x 30"
GS6-3036SSK-X	36" x 30"
GS6-3048SSK-X	48" x 30"
GS6-3060SSK-X	60" x 30"
GS6-3072SSK-X	72" x 30"

Machine Stands

- 16GA 300 Series Stainless Steel
- 1-5/8" Legs & Bracing w/Adj Metal Bullet Feet
- Shipped Knocked Down Easy-To-Assemble
- Available Welded Setup At No Additional Cost



S16MS07-X

Galvanized Legs and Bracing

Model #	L x W
S16MS01-X	24" x 20"
S16MS02-X	24" x 24"
S16MS03-X	30" x 20"
S16MS04-X	30" x 24"
S16MS05-X	30" x 30"

Stainless Steel Legs And Bracing

Model #	L x W
S16MS06-X	24" x 20"
S16MS07-X	24" x 24"
S16MS08-X	30" x 20"
S16MS09-X	30" x 24"
S16MS10-X	30" x 30"



EES8-3048-X

Equipment Stands "E-Series" 18GA

- 18GA 430 Series Stainless Steel Top
- 18GA Adjustable Undershef
- GALV or Stainless Steel Legs And Adj Bullet Feet
- 1.5" High Rear and Side Risers
- 24" Overall Height

GALV Legs & Adj Undershef

Model #	L x W
EES8-3015-X	15" x 30"
EES8-3018-X	18" x 30"
EES8-3024-X	24" x 30"
EES8-3036-X	36" x 30"
EES8-3048-X	48" x 30"
EES8-3060-X	60" x 30"
EES8-3072-X	72" x 30"

Stainless Steel Legs & Adj Undershef

Model #	L x W
EES8-3015SSK-X	15" x 30"
EES8-3018SSK-X	18" x 30"
EES8-3024SSK-X	24" x 30"
EES8-3036SSK-X	36" x 30"
EES8-3048SSK-X	48" x 30"
EES8-3060SSK-X	60" x 30"
EES8-3072SSK-X	72" x 30"

Heavy Duty Machine Stands

- 14GA 300 Series Stainless Steel
- 1-5/8" Legs & Bracing w/Adj Metal Bullet Feet
- Marine Edge: 20" Tall
- Shipped Knocked Down Easy-To-Assemble



MS4-2424GSK-X

Galvanized Legs and Undershelves

Model #	L x W
MS4-2424GSK-X	24" x 24"
MS4-2430GSK-X	30" x 24"
MS4-3030GSK-X	30" x 30"
MS4-3036GSK-X	36" x 30"

Stainless Steel Legs And Undershelves

Model #	L x W
MS4-2424SSK-X	24" x 24"
MS4-2430SSK-X	30" x 24"
MS4-3030SSK-X	30" x 30"
MS4-3036SSK-X	36" x 30"

Stallion Work Tables w/Adjustable Stainless Steel Legs & Lower Shelf



- 16GA 300 Series Stainless Steel Top
- Available In Flat Top or 5" High 1.5" Deep Clip-Down Riser
- Stallion Edge, Straight Turndown on Sides

- 18GA Stainless Steel Adjustable Lower Shelf
 - Stainless Steel Legs And Adj Metal Bullet Feet
 - Shipped Knocked-Down, Easy-To-Assemble
- Note: * (Allow Up To 10 Days For Shipment)



ST6-3048SSK-X



ST6R5-3048SSK-X

ASSEMBLY VIDEO ONLINE AT
YOUTUBE.COM/JOHNBOOSCO

Flat Top Work Tables w/Lower Shelf

L x W	Model #
30" x 24"	ST6-2430SSK-X
36" x 24"	ST6-2436SSK-X
48" x 24"	ST6-2448SSK-X
60" x 24"	ST6-2460SSK-X
72" x 24"	ST6-2472SSK-X
84" x 24"	ST6-2484SSK-X
96" x 24"	ST6-2496SSK-X
108" x 24"	ST6-24108SSK-X *
120" x 24"	ST6-24120SSK-X *
30" x 30"	ST6-3030SSK-X
36" x 30"	ST6-3036SSK-X
48" x 30"	ST6-3048SSK-X
60" x 30"	ST6-3060SSK-X
72" x 30"	ST6-3072SSK-X
84" x 30"	ST6-3084SSK-X
96" x 30"	ST6-3096SSK-X
108" x 30"	ST6-30108SSK-X *
120" x 30"	ST6-30120SSK-X *
30" x 36"	ST6-3630SSK-X
48" x 36"	ST6-3648SSK-X
60" x 36"	ST6-3660SSK-X
72" x 36"	ST6-3672SSK-X
84" x 36"	ST6-3684SSK-X
96" x 36"	ST6-3696SSK-X

5" Riser Top Work Tables w/Lower Shelf

L x W	Model #
30" x 24"	ST6R5-2430SSK-X
36" x 24"	ST6R5-2436SSK-X
48" x 24"	ST6R5-2448SSK-X
60" x 24"	ST6R5-2460SSK-X
72" x 24"	ST6R5-2472SSK-X
84" x 24"	ST6R5-2484SSK-X
96" x 24"	ST6R5-2496SSK-X
108" x 24"	ST6R5-24108SSK-X *
120" x 24"	ST6R5-24120SSK-X *
24" x 30"	ST6R5-3024SSK-X
30" x 30"	ST6R5-3030SSK-X
36" x 30"	ST6R5-3036SSK-X
48" x 30"	ST6R5-3048SSK-X
60" x 30"	ST6R5-3060SSK-X
72" x 30"	ST6R5-3072SSK-X
84" x 30"	ST6R5-3084SSK-X
96" x 30"	ST6R5-3096SSK-X
108" x 30"	ST6R5-30108SSK-X *
120" x 30"	ST6R5-30120SSK-X *

Optional Stainless Steel Legs With 5" Locking Casters

- Finished Working Height Of 35-3/4"
- Note: For Adding Casters To Existing Work Tables In Field.

Model #	Descriptions
SLEG-34.75C-4-X	Set of 4
SLEG-34.75C-6-X	Set of 6



Does Not Include Table

Stallion Work Tables w/Adjustable Galvanized Legs & Lower Shelf



- 16GA 300 Series Stainless Steel
 - Available In Flat Top or 5" High 1.5" Deep Clip-Down Riser
 - Stallion Edge, Straight Turndown on Sides
 - 18GA Galvanized Adjustable Lower Shelf
 - Galvanized Legs And Adj Metal Bullet Feet
 - Shipped Knocked-Down, Easy-To-Assemble
- Note: * (Allow Up To 10 Days For Shipment)



ST6-3048GSK-X



ST6R5-3048GSK-X

Flat Top Work Tables w/Lower Shelf

L x W	Model #
30" x 24"	ST6-2430GSK-X
36" x 24"	ST6-2436GSK-X
48" x 24"	ST6-2448GSK-X
60" x 24"	ST6-2460GSK-X
72" x 24"	ST6-2472GSK-X
84" x 24"	ST6-2484GSK-X *
96" x 24"	ST6-2496GSK-X
108" x 24"	ST6-24108GSK-X *
120" x 24"	ST6-24120GSK-X *
30" x 30"	ST6-3030GSK-X
36" x 30"	ST6-3036GSK-X
48" x 30"	ST6-3048GSK-X
60" x 30"	ST6-3060GSK-X
72" x 30"	ST6-3072GSK-X
84" x 30"	ST6-3084GSK-X *
96" x 30"	ST6-3096GSK-X
108" x 30"	ST6-30108GSK-X *
120" x 30"	ST6-30120GSK-X *
48" x 36"	ST6-3648GSK-X
60" x 36"	ST6-3660GSK-X
72" x 36"	ST6-3672GSK-X
84" x 36"	ST6-3684GSK-X
96" x 36"	ST6-3696GSK-X

5" Riser Top Work Tables w/Lower Shelf

L x W	Model #
30" x 24"	ST6R5-2430GSK-X
36" x 24"	ST6R5-2436GSK-X
48" x 24"	ST6R5-2448GSK-X
60" x 24"	ST6R5-2460GSK-X
72" x 24"	ST6R5-2472GSK-X
84" x 24"	ST6R5-2484GSK-X *
96" x 24"	ST6R5-2496GSK-X
108" x 24"	ST6R5-24108GSK-X *
120" x 24"	ST6R5-24120GSK-X *
24" x 30"	ST6R5-3024GSK-X
30" x 30"	ST6R5-3030GSK-X
36" x 30"	ST6R5-3036GSK-X
48" x 30"	ST6R5-3048GSK-X
60" x 30"	ST6R5-3060GSK-X
72" x 30"	ST6R5-3072GSK-X
84" x 30"	ST6R5-3084GSK-X *
96" x 30"	ST6R5-3096GSK-X
108" x 30"	ST6R5-30108GSK-X *
120" x 30"	ST6R5-30120GSK-X *

Optional Stainless Steel Legs With 5" Locking Casters

- Finished Working Height Of 35-3/4"
- Note: For Adding Casters To Existing Work Tables In Field.

Model #	Descriptions
SLEG-34.75C-4-X	Set of 4
SLEG-34.75C-6-X	Set of 6

Universal Deep Fryer Splash Guard

- 18GA 300 Stainless Steel
- Fits Left or Right Side Of Fryer
- Sold Individually



Model #	L x H
FSG-2018-X	20" x 18"

John Boos Stainless Steel Cleaner & Polish

New and improved formula! A unique blend of plant-based ingredients deliver superior results that cleans and polishes stainless steel surfaces. Works great on appliances, counter-tops, sinks, grills and more. Removes streaks, smudges, and fingerprints. Eco-Friendly.



Model #	Description
BSC-X	8oz Spray Bottle (Must Order In Quantities of 12.)
BSC-3-X	8oz Spray Bottle (3-Pack)

Stallion Work Tables w/Adjustable Stainless Steel Bracing

- 16GA 300 Series Stainless Steel
- Available In Flat Top or 5" High 1.5" Deep Clip-Down Riser
- Stallion Edge, Straight Turndown on Sides

- Stainless Steel Legs And Bracing w/ Metal Bullet Feet
 - Shipped Knocked-Down, Easy-To-Assemble
- Note: * (Allow Up To 10 Days For Shipment)



ST6-3048SBK-X



ST6R5-3048SBK-X

Flat Top Work Tables w/Stainless Bracing

L x W	Model #
30" x 24"	ST6-2430SBK-X
36" x 24"	ST6-2436SBK-X
48" x 24"	ST6-2448SBK-X
60" x 24"	ST6-2460SBK-X
72" x 24"	ST6-2472SBK-X
84" x 24"	ST6-2484SBK-X
96" x 24"	ST6-2496SBK-X
108" x 24"	ST6-24108SBK-X *
120" x 24"	ST6-24120SBK-X *
30" x 30"	ST6-3030SBK-X
36" x 30"	ST6-3036SBK-X
48" x 30"	ST6-3048SBK-X
60" x 30"	ST6-3060SBK-X
72" x 30"	ST6-3072SBK-X
84" x 30"	ST6-3084SBK-X
96" x 30"	ST6-3096SBK-X
108" x 30"	ST6-30108SBK-X *
120" x 30"	ST6-30120SBK-X *
48" x 36"	ST6-3648SBK-X
60" x 36"	ST6-3660SBK-X
72" x 36"	ST6-3672SBK-X
84" x 36"	ST6-3684SBK-X
96" x 36"	ST6-3696SBK-X

5" Riser Top Work Tables w/Stainless Bracing

L x W	Model #
30" x 24"	ST6R5-2430SBK-X
36" x 24"	ST6R5-2436SBK-X
48" x 24"	ST6R5-2448SBK-X
60" x 24"	ST6R5-2460SBK-X
72" x 24"	ST6R5-2472SBK-X
84" x 24"	ST6R5-2484SBK-X
96" x 24"	ST6R5-2496SBK-X
108" x 24"	ST6R5-24108SBK-X *
120" x 24"	ST6R5-24120SBK-X *
24" x 30"	ST6R5-3024SBK-X
30" x 30"	ST6R5-3030SBK-X
36" x 30"	ST6R5-3036SBK-X
48" x 30"	ST6R5-3048SBK-X
60" x 30"	ST6R5-3060SBK-X
72" x 30"	ST6R5-3072SBK-X
84" x 30"	ST6R5-3084SBK-X
96" x 30"	ST6R5-3096SBK-X
108" x 30"	ST6R5-30108SBK-X *
120" x 30"	ST6R5-30120SBK-X *

Optional Stainless Steel Legs With 5" Locking Casters

- Finished Working Height Of 35-3/4"
- Note: For Adding Casters To Existing Work Tables In

Model #	Descriptions
SLEG-34.75C-4-X	Set of 4
SLEG-34.75C-6-X	Set of 6

Self Closing Stainless Steel Drawers

- 20" x 20" x 5"
- Self Closing Drawer
- Stainless Steel Front Drawer And Pan



Stainless Steel Roller Bearings

Model #	Descriptions
DR2020SC-S30-X	30" Wide Stainless Tables Only
DR2020SC-S36-X	36" Wide Stainless Tables Only
DR2020SC-W-X	Wood Top Tables Only - Any Size

Replacement Casters

- 5" Heavy Duty Locking Casters For Round Legs
- Note: If "ST" Work Tables Are Ordered With Casters CAS01-R or CAS02-R, table legs will be pre-cut to allow a finished working height of 35-3/4". (Available For "ST" Tables Only.)

Model #	Descriptions
CAS01-R-X	Set of 4
CAS02-R-X	Set of 6



Stallion Work Tables w/Adjustable Galvanized Steel Bracing

- 16GA 300 Series Stainless Steel
 - Available In Flat Top or 5" High 1.5" Deep Clip-Down Riser
 - Stallion Edge, Straight Turndown on Sides
 - Galvanized Legs And Bracing w/ Metal Bullet Feet
 - Shipped Knocked-Down, Easy-To-Assemble
- Note: * (Allow Up To 10 Days For Shipment)



ST6-3048GBK-X



ST6R5-3048GBK-X

ASSEMBLY VIDEO ONLINE AT
YOUTUBE.COM/JOHNBOOSCO

Flat Top Work Tables w/Galvanized Bracing

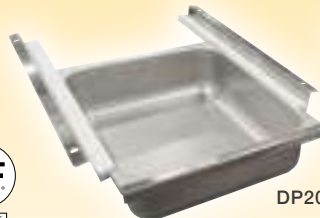
L x W	Model #
30" x 24"	ST6-2430GBK-X
36" x 24"	ST6-2436GBK-X
48" x 24"	ST6-2448GBK-X
60" x 24"	ST6-2460GBK-X
72" x 24"	ST6-2472GBK-X
84" x 24"	ST6-2484GBK-X *
96" x 24"	ST6-2496GBK-X
108" x 24"	ST6-24108GBK-X *
120" x 24"	ST6-24120GBK-X *
30" x 30"	ST6-3030GBK-X
36" x 30"	ST6-3036GBK-X
48" x 30"	ST6-3048GBK-X
60" x 30"	ST6-3060GBK-X
72" x 30"	ST6-3072GBK-X
84" x 30"	ST6-3084GBK-X *
96" x 30"	ST6-3096GBK-X
108" x 30"	ST6-30108GBK-X *
120" x 30"	ST6-30120GBK-X *
48" x 36"	ST6-3648GBK-X
60" x 36"	ST6-3660GBK-X
72" x 36"	ST6-3672GBK-X
84" x 36"	ST6-3684GBK-X
96" x 36"	ST6-3696GBK-X

5" Riser Top Work Tables w/Galvanized Bracing

L x W	Model #
30" x 24"	ST6R5-2430GBK-X
36" x 24"	ST6R5-2436GBK-X
48" x 24"	ST6R5-2448GBK-X
60" x 24"	ST6R5-2460GBK-X
72" x 24"	ST6R5-2472GBK-X
84" x 24"	ST6R5-2484GBK-X *
96" x 24"	ST6R5-2496GBK-X
108" x 24"	ST6R5-24108GBK-X *
120" x 24"	ST6R5-24120GBK-X *
24" x 30"	ST6R5-3024GBK-X
30" x 30"	ST6R5-3030GBK-X
36" x 30"	ST6R5-3036GBK-X
48" x 30"	ST6R5-3048GBK-X
60" x 30"	ST6R5-3060GBK-X
72" x 30"	ST6R5-3072GBK-X
84" x 30"	ST6R5-3084GBK-X *
96" x 30"	ST6R5-3096GBK-X
108" x 30"	ST6R5-30108GBK-X *
120" x 30"	ST6R5-30120GBK-X *

Stainless Steel Drawers

- 15" x 20" x 5"
- Stainless Steel Front Drawer And Pan
- Available In Poly Friction Slides or Stainless Steel Roller Bearings



DP2015-S30-X



DR2015-S30-X

Poly Friction Slides

Model #	Descriptions
DP2015-S24-X	24" Wide Stainless Tables Only (Poly Friction Slides)
DP2015-S30-X	30" Wide Stainless Tables Only (Poly Friction Slides)
DP2015-S36-X	36" Wide Stainless Tables Only (Poly Friction Slides)
DP2015-W-X	Wood Top Tables Only - Any Size (Poly Friction Slides)

Stainless Steel Roller Bearings

Model #	Descriptions
DR2015-S24-X	24" Wide Stainless Tables Only (Stainless Steel Roller Bearings)
DR2015-S30-X	30" Wide Stainless Tables Only (Stainless Steel Roller Bearings)
DR2015-S36-X	36" Wide Stainless Tables Only (Stainless Steel Roller Bearings)
DR2015-W-X	Wood Top Tables Only - Any Size (Stainless Steel Roller Bearings)

Stallion Work Tables w/1.5" Turn Up Rear Riser Top NSF

- 16GA 300 Series Stainless Steel Top
 - 1.5" Turn Up Rear Riser Top
 - Stallion Edge, Straight Turndown on Sides
 - Available With Adjustable Lower Shelf Or Lower Bracing
 - Adjustable Metal Bullet Feet
 - Shipped Knocked-Down, Easy-To-Assemble
- Note: * (Allow Up To 10 Days For Shipment)



ST6R1.5-3048SSK-X



ST6R1.5-3048GSK-X

1.5" Rear Riser With 18GA Stainless Steel Lower Shelf

L x W	Model #
30" x 24"	ST6R1.5-2430SSK-X
36" x 24"	ST6R1.5-2436SSK-X
48" x 24"	ST6R1.5-2448SSK-X
60" x 24"	ST6R1.5-2460SSK-X
72" x 24"	ST6R1.5-2472SSK-X
84" x 24"	ST6R1.5-2484SSK-X
96" x 24"	ST6R1.5-2496SSK-X
108" x 24"	ST6R1.5-24108SSK-X *
120" x 24"	ST6R1.5-24120SSK-X *
30" x 30"	ST6R1.5-3030SSK-X
36" x 30"	ST6R1.5-3036SSK-X
48" x 30"	ST6R1.5-3048SSK-X
60" x 30"	ST6R1.5-3060SSK-X
72" x 30"	ST6R1.5-3072SSK-X
84" x 30"	ST6R1.5-3084SSK-X
96" x 30"	ST6R1.5-3096SSK-X
108" x 30"	ST6R1.5-30108SSK-X *
120" x 30"	ST6R1.5-30120SSK-X *
48" x 36"	ST6R1.5-3648SSK-X
60" x 36"	ST6R1.5-3660SSK-X
72" x 36"	ST6R1.5-3672SSK-X
84" x 36"	ST6R1.5-3684SSK-X
96" x 36"	ST6R1.5-3696SSK-X

1.5" Rear Riser With 18GA Galvanized Lower Shelf

L x W	Model #
30" x 24"	ST6R1.5-2430GSK-X
36" x 24"	ST6R1.5-2436GSK-X
48" x 24"	ST6R1.5-2448GSK-X
60" x 24"	ST6R1.5-2460GSK-X
72" x 24"	ST6R1.5-2472GSK-X
84" x 24"	ST6R1.5-2484GSK-X
96" x 24"	ST6R1.5-2496GSK-X
108" x 24"	ST6R1.5-24108GSK-X *
120" x 24"	ST6R1.5-24120GSK-X *
30" x 30"	ST6R1.5-3030GSK-X
36" x 30"	ST6R1.5-3036GSK-X
48" x 30"	ST6R1.5-3048GSK-X
60" x 30"	ST6R1.5-3060GSK-X
72" x 30"	ST6R1.5-3072GSK-X
84" x 30"	ST6R1.5-3084GSK-X
96" x 30"	ST6R1.5-3096GSK-X
108" x 30"	ST6R1.5-30108GSK-X *
120" x 30"	ST6R1.5-30120GSK-X *
48" x 36"	ST6R1.5-3648GSK-X
60" x 36"	ST6R1.5-3660GSK-X
72" x 36"	ST6R1.5-3672GSK-X
84" x 36"	ST6R1.5-3684GSK-X
96" x 36"	ST6R1.5-3696GSK-X



Drop-In Sink & Faucet



EFT8-3015ssk-s-X

Filler Table With Drop-In Sink

- 18GA Type 400 Stainless Steel Top
- 1-1/2" Turn Up Rear Riser
- Stallion Edge Front, Straight Turndown on Sides
- Stainless Steel Legs And Adjustable Undershelf
- Adjustable Bullet Feet
- Includes Drop-In Sink (10" x 14" x 5" Bowl Size)
- Includes Economy Faucet (PBF-4-D-LF-X)

Model #	L x W
EFT8-3015SSK-S-X	15" x 30"
EFT8-3018SSK-S-X	18" x 30"
EFT8-3024SSK-S-X	24" x 30"



ST6R1.5-3048SBK-X



ST6R1.5-3048GBK-X

1.5" Rear Riser With Stainless Steel Lower Bracing & Legs

L x W	Model #
30" x 24"	ST6R1.5-2430SBK-X
36" x 24"	ST6R1.5-2436SBK-X
48" x 24"	ST6R1.5-2448SBK-X
60" x 24"	ST6R1.5-2460SBK-X
72" x 24"	ST6R1.5-2472SBK-X
84" x 24"	ST6R1.5-2484SBK-X
96" x 24"	ST6R1.5-2496SBK-X
108" x 24"	ST6R1.5-24108SBK-X *
120" x 24"	ST6R1.5-24120SBK-X *
30" x 30"	ST6R1.5-3030SBK-X
36" x 30"	ST6R1.5-3036SBK-X
48" x 30"	ST6R1.5-3048SBK-X
60" x 30"	ST6R1.5-3060SBK-X
72" x 30"	ST6R1.5-3072SBK-X
84" x 30"	ST6R1.5-3084SBK-X
96" x 30"	ST6R1.5-3096SBK-X
108" x 30"	ST6R1.5-30108SBK-X *
120" x 30"	ST6R1.5-30120SBK-X *
48" x 36"	ST6R1.5-3648SBK-X
60" x 36"	ST6R1.5-3660SBK-X
72" x 36"	ST6R1.5-3672SBK-X
84" x 36"	ST6R1.5-3684SBK-X
96" x 36"	ST6R1.5-3696SBK-X

1.5" Rear Riser With Galvanized Lower Bracing & Legs

L x W	Model #
30" x 24"	ST6R1.5-2430GBK-X
36" x 24"	ST6R1.5-2436GBK-X
48" x 24"	ST6R1.5-2448GBK-X
60" x 24"	ST6R1.5-2460GBK-X
72" x 24"	ST6R1.5-2472GBK-X
84" x 24"	ST6R1.5-2484GBK-X
96" x 24"	ST6R1.5-2496GBK-X
108" x 24"	ST6R1.5-24108GBK-X
120" x 24"	ST6R1.5-24120GBK-X
30" x 30"	ST6R1.5-3030GBK-X
36" x 30"	ST6R1.5-3036GBK-X
48" x 30"	ST6R1.5-3048GBK-X
60" x 30"	ST6R1.5-3060GBK-X
72" x 30"	ST6R1.5-3072GBK-X
84" x 30"	ST6R1.5-3084GBK-X
96" x 30"	ST6R1.5-3096GBK-X
108" x 30"	ST6R1.5-30108GBK-X
120" x 30"	ST6R1.5-30120GBK-X
48" x 36"	ST6R1.5-3648GBK-X
60" x 36"	ST6R1.5-3660GBK-X
72" x 36"	ST6R1.5-3672GBK-X
84" x 36"	ST6R1.5-3684GBK-X
96" x 36"	ST6R1.5-3696GBK-X

Optional Stainless Steel Legs With 5" Locking Casters

- Finished Working Height Of 35-3/4"
- Note: For Adding Casters To Existing Work Tables In Field.

Model #	Descriptions
SLEG-34.75C-4-X	Set of 4
SLEG-34.75C-6-X	Set of 6

Riser Top Filler Tables 1.5" Turn Up w/Adjustable Undershef



EFT8-3015-X

- 18GA 430 Series Stainless Steel
- Stallion Edge Both Faces, Straight Turn Down On Sides

- 1.5" Turned Up Rear Riser
- Adjustable Lower Shelf w/Plastic Bullet Feet
- Shipped Knocked-Down, Easy-To-Assemble

Galvanized Legs And Shelf

Model #	L x W
EFT8-3012-X	12" x 30"
EFT8-3015-X	15" x 30"
EFT8-3018-X	18" x 30"
EFT8-3024-X	24" x 30"
EFT8-3612-X	12" x 36"
EFT8-3615-X	15" x 36"
EFT8-3618-X	18" x 36"
EFT8-3624-X	24" x 36"

Stainless Steel Legs And Shelf

Model #	L x W
EFT8-3012SSK-X	12" x 30"
EFT8-3015SSK-X	15" x 30"
EFT8-3018SSK-X	18" x 30"
EFT8-3024SSK-X	24" x 30"
EFT8-3612SSK-X	12" x 36"
EFT8-3615SSK-X	15" x 36"
EFT8-3618SSK-X	18" x 36"
EFT8-3624SSK-X	24" x 36"

To Request A Custom Quote Email: quotes@johnboos.com • www.johnboos.com

"E-Series" Budget Work Tables

- 18GA Type 430 Stainless Steel Flat Top Tables
- Stallion Edge Both Faces, Straight Turn Down On Sides
- Adjustable Lower Shelf

- Legs And Adjustable Bullet Feet
- Shipped Knocked-Down, Easy-To-Assemble



FBLG4830-X



FBLS4830-X

Flat Top Tables Galvanized Legs & Adjustable Undershelf

Model #	L x W
FBLG3618-X	36" x 18"
FBLG4818-X	48" x 18"
FBLG6018-X	60" x 18"
FBLG7218-X	72" x 18"
FBLG9618-X	96" x 18"
FBLG2424-X	24" x 24"
FBLG3024-X	30" x 24"
FBLG3624-X	36" x 24"
FBLG4824-X	48" x 24"
FBLG6024-X	60" x 24"
FBLG7224-X	72" x 24"
FBLG8424-X	84" x 24"
FBLG9624-X	96" x 24"
FBLG3030-X	30" x 30"
FBLG3630-X	36" x 30"
FBLG4830-X	48" x 30"
FBLG6030-X	60" x 30"
FBLG7230-X	72" x 30"
FBLG8430-X	84" x 30"
FBLG9630-X	96" x 30"

Flat Top Tables Stainless Steel Legs & Adjustable Undershelf

Model #	L x W
FBLS2418-X	24" x 18"
FBLS3018-X	30" x 18"
FBLS3618-X	36" x 18"
FBLS4818-X	48" x 18"
FBLS6018-X	60" x 18"
FBLS7218-X	72" x 18"
FBLS9618-X	96" x 18"
FBLS2424-X	24" x 24"
FBLS3024-X	30" x 24"
FBLS3624-X	36" x 24"
FBLS4824-X	48" x 24"
FBLS6024-X	60" x 24"
FBLS7224-X	72" x 24"
FBLS9624-X	96" x 24"
FBLS3030-X	30" x 30"
FBLS3630-X	36" x 30"
FBLS4830-X	48" x 30"
FBLS6030-X	60" x 30"
FBLS7230-X	72" x 30"
FBLS9630-X	96" x 30"

Wall Corner Guards

- 16GA Stainless Steel
- 2" x 2" and 4" x 4" Sizes
- Available For Inside Or Outside Corners
- Sold Individually

Model #	L x W x H	Description
CORNER482-OUT-X	2" x 2" x 48"	Outside Corner
CORNER602-OUT-X	2" x 2" x 60"	Outside Corner
CORNER962-OUT-X	2" x 2" x 96"	Outside Corner
CORNER484-OUT-X	4" x 4" x 48"	Outside Corner
CORNER484-IN-X	4" x 4" x 48"	Inside Corner





UFBLG4830-X

**1.5" Turn Up Rear Riser Top Table
Galvanized Legs & Adjustable Undershelf**

Model #	L x W
UFBLG3618-X	36" x 18"
UFBLG4818-X	48" x 18"
UFBLG6018-X	60" x 18"
UFBLG7218-X	72" x 18"
UFBLG9618-X	96" x 18"
UFBLG2424-X	24" x 24"
UFBLG3024-X	30" x 24"
UFBLG3624-X	36" x 24"
UFBLG4824-X	48" x 24"
UFBLG6024-X	60" x 24"
UFBLG7224-X	72" x 24"
UFBLG8424-X	84" x 24"
UFBLG9624-X	96" x 24"
UFBLG3030-X	30" x 30"
UFBLG3630-X	36" x 30"
UFBLG4830-X	48" x 30"
UFBLG6030-X	60" x 30"
UFBLG7230-X	72" x 30"
UFBLG8430-X	84" x 30"
UFBLG9630-X	96" x 30"



UFBLS4830-X

**1.5" Turn Up Rear Riser Top Table
Stainless Legs & Adjustable Undershelf**

Model #	L x W
UFBLS2418-X	24" x 18"
UFBLS3018-X	30" x 18"
UFBLS3618-X	36" x 18"
UFBLS4818-X	48" x 18"
UFBLS6018-X	60" x 18"
UFBLS7218-X	72" x 18"
UFBLS9618-X	96" x 18"
UFBLS2424-X	24" x 24"
UFBLS3024-X	30" x 24"
UFBLS3624-X	36" x 24"
UFBLS4824-X	48" x 24"
UFBLS6024-X	60" x 24"
UFBLS7224-X	72" x 24"
UFBLS9624-X	96" x 24"
UFBLS3030-X	30" x 30"
UFBLS3630-X	36" x 30"
UFBLS4830-X	48" x 30"
UFBLS6030-X	60" x 30"
UFBLS7230-X	72" x 30"
UFBLS9630-X	96" x 30"

**5" Riser Top Table
Galvanized Legs & Adjustable Undershelf**

Model #	L x W
FBLGR5-2424-X	24" x 24"
FBLGR5-3024-X	30" x 24"
FBLGR5-3624-X	36" x 24"
FBLGR5-4824-X	48" x 24"
FBLGR5-6024-X	60" x 24"
FBLGR5-7224-X	72" x 24"
FBLGR5-8424-X	84" x 24"
FBLGR5-9624-X	96" x 24"
FBLGR5-3030-X	30" x 30"
FBLGR5-3630-X	36" x 30"
FBLGR5-4830-X	48" x 30"
FBLGR5-6030-X	60" x 30"
FBLGR5-7230-X	72" x 30"
FBLGR5-8430-X	84" x 30"
FBLGR5-9630-X	96" x 30"



FBLGR5-4830-X

SMRFSF0620

Ergonomic Adjustable LIFT Tables - STAINLESS STEEL

- 16GA Stainless Steel Top
- Fixed Stainless Steel Undershelf
- Hydraulic Lift System
- 32" - 40" Adjustable Table Height
- 8" Stroke Lift System Cylinders
- Hand Crank Height Adjustment
- Foldable Hand Crank When Not In Use.
- Adjustable Floor Glides



LT6-3048SSW-X

Foldable Hand Crank



LT6R5-3048SSW-X

Foldable Hand Crank

Flat Top Hydraulic Lift Tables w/Lower Shelf

Model #	L x W
LT6-3048SSW-X	48" x 30"
LT6-3060SSW-X	60" x 30"
LT6-3072SSW-X	72" x 30"

5" Riser Top Hydraulic Lift Tables w/Lower Shelf

Model #	L x W
LT6R5-3048SSW-X	48" x 30"
LT6R5-3060SSW-X	60" x 30"
LT6R5-3072SSW-X	72" x 30"

Economy Overshelves



- 18GA 300 Series Stainless Steel
- Double Overshelves Including Adjustable Lower Shelf

Single Economy Overshelves

Model #	L x W
OS-ES-1236-X	36" x 12"
OS-ES-1248-X	48" x 12"
OS-ES-1260-X	60" x 12"
OS-ES-1272-X	72" x 12"
OS-ES-1296-X	96" x 12"
OS-ES-1836-X	36" x 18"
OS-ES-1848-X	48" x 18"
OS-ES-1860-X	60" x 18"
OS-ES-1872-X	72" x 18"
OS-ES-1896-X	96" x 18"



OS-ES-1248-X
(Does Not Include Table)

Double Economy Overshelves

Model #	L x W
OS-ED-1236-X	36" x 12"
OS-ED-1248-X	48" x 12"
OS-ED-1260-X	60" x 12"
OS-ED-1272-X	72" x 12"
OS-ED-1296-X	96" x 12"
OS-ED-1836-X	36" x 18"
OS-ED-1848-X	48" x 18"
OS-ED-1860-X	60" x 18"
OS-ED-1872-X	72" x 18"
OS-ED-1896-X	96" x 18"



OS-ED-1260-X
(Does Not Include Table)



1-1/2" Thick Maple Wood Bakers Table Top

- 1-1/2" Thick Hard Rock Flat Maple Top w/Penetrating Oil Finish
- Adjustable Bullet Feet
- Available In Galvanized or Stainless Steel Adj Lower Shelf
- Available In Galvanized or Stainless Steel Adj Bracing
- Shipped Knocked-Down, Easy-To-Assemble



JNS10-X



JNB09-X

Galvanized Legs & Adjustable Lower Shelf

Model #	L x W
JNS09-X	48" x 30"
JNS10-X	60" x 30"
JNS11-X	72" x 30"
JNS13-X	96" x 30"

Galvanized Legs & Adjustable Bracing

Model #	L x W
JNB08-X	48" x 30"
JNB09-X	60" x 30"
JNB10-X	72" x 30"
JNB11-X	96" x 30"
JNB14-X	48" x 36"
JNB15-X	60" x 36"
JNB16-X	72" x 36"
JNB17-X	96" x 36"

1-3/4" Thick Maple Wood Bakers Table Top

- 1-3/4" Thick Hard Rock Flat Maple Top w/Penetrating Oil Finish
- Adjustable Bullet Feet
- Available In Stainless Steel Adj Lower Shelf Or Adj Bracing
- Shipped Knocked-Down, Easy-To-Assemble



SNS09-X



SNB09-X

Stainless Steel Legs & Adjustable Lower Shelf

Model #	L x W
SNS08-X	48" x 30"
SNS09-X	60" x 30"
SNS10-X	72" x 30"
SNS11-X	96" x 30"

Stainless Steel Legs & Adjustable Bracing

Model #	L x W
SNB08-X	48" x 30"
SNB09-X	60" x 30"
SNB10-X	72" x 30"
SNB11-X	96" x 30"
SNB14-X	48" x 36"
SNB15-X	60" x 36"
SNB16-X	72" x 36"
SNB17-X	96" x 36"

Optional Stainless Steel Adjustable Lower Shelf

- 18GA Type 400 Stainless Steel With #4 Polish, Satin Finish
- Knocked Down Setup
- Fits JNS & SNS Tables



Model #	L x W
ESSK8-3048-X	48" x 30"
ESSK8-3060-X	60" x 30"
ESSK8-3072-X	72" x 30"
ESSK8-3096-X	96" x 30"



1-3/4" Thick Maple Wood Top With 4" Coved Riser Rear & Sides

- 1-3/4" Thick - Antimicrobial Hard Rock Flat Maple Top w/Penetrating Oil Finish
- 4" Coved Riser Rear And Sides
- Available In Galvanized or Stainless Steel Adj Lower Shelf
- Available In Galvanized or Stainless Steel Adj Bracing
- Shipped Knocked-Down, Easy-To-Assemble



DNS08-X



DNB08-X

Galvanized Legs & Adjustable Lower Shelf

Model #	L x W
DNS07-X	48" x 30"
DNS08-X	60" x 30"
DNS09-X	72" x 30"
DNS11-X	96" x 30"

Galvanized Legs & Adjustable Bracing

Model #	L x W
DNB07-X	48" x 30"
DNB08-X	60" x 30"
DNB09-X	72" x 30"
DNB11-X	96" x 30"
DNB13-X	48" x 36"
DNB14-X	60" x 36"
DNB15-X	72" x 36"
DNB17-X	96" x 36"



DSS07-X



DSB07-X

Stainless Steel Legs & Adjustable Lower Shelf

Model #	L x W
DSS06-X	48" x 30"
DSS07-X	60" x 30"
DSS08-X	72" x 30"
DSS09-X	96" x 30"

Stainless Steel Legs & Adjustable Bracing

Model #	L x W
DSB06-X	48" x 30"
DSB07-X	60" x 30"
DSB08-X	72" x 30"
DSB09-X	96" x 30"
DSB11-X	48" x 36"
DSB12-X	60" x 36"
DSB13-X	72" x 36"
DSB14-X	96" x 36"



SC Style Replacement Tops - 1-3/4" Thick Hard Rock Maple



- 1-3/4" Thick - Antimicrobial Hard Rock Maple
- Penetrating Oil Finish
- Non-Reversible

Model #	L x W	Weight
SC011-O-X	48" x 30"	77 lbs
SC012-O-X	60" x 30"	96 lbs
SC013-O-X	72" x 30"	116 lbs
SC015-O-X	96" x 30"	154 lbs

SB Style Replacement Tops - 1-3/4" Thick Hard Rock Maple With 4" High Horizontally Vertical Coved Riser



- 1-3/4" Thick - Antimicrobial Hard Rock Maple
- Penetrating Oil Finish
- Non-Reversible
- 4" High Horizontal and Vertical Coved Risers On Back And Sides

Model #	L x W	Weight
SB009-O-X	48" x 30"	106 lbs
SB010-O-X	60" x 30"	127 lbs
SB011-O-X	72" x 30"	149 lbs
SB013-O-X	96" x 30"	192 lbs



Antimicrobial Boos Block Mystery Oil



Model #	Description
MYSB-X	Must Order In Lots Of 12 - 16oz Bottle
MYS-3-X	3 Pack - 16oz Bottle
MYS128-X	1 GAL Bottle



16OZ

1GAL

5OZ

Antimicrobial Boos Block Board Cream



Model #	Description
BWC-X	Must Order In Lots Of 12 - 5oz by weight
BWC-3-X	3 Pack - 5oz by weight



APPLICRND1-X

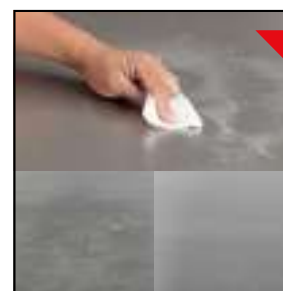
Boos Block Applicator

Model #	Description
APPLICRND1-X	(1) Oil/Cream Round Applicator
APPLICRND2-X	(2) Oil/Cream Round Applicator

John Boos Stainless Steel Cleaner & Polish

New and improved formula! A unique blend of plant-based ingredients deliver superior results that cleans and polishes stainless steel surfaces. Works great on appliances, countertops, sinks, grills and more. Removes streaks, smudges, and fingerprints. Eco-Friendly.

Model #	Description
BSC-X	8oz Spray Bottle (Must Order In Quantities of 12.)
BSC-3-X	8oz Spray Bottle (3-Pack)



BEFORE AFTER



18GA 300 - Wall Shelves - 1.5" Rear High Riser

- 18GA 300 Series Stainless Steel
- 1.5" Rear High Riser
- 6', 7', And 8' Wall Shelves Standard w/3 Support Brackets



BHS1236-X

Model #	L x W
BHS1224-X	24" x 12"
BHS1236-X	36" x 12"
BHS1248-X	48" x 12"
BHS1260-X	60" x 12"
BHS1272-X	72" x 12"
BHS1284-X	84" x 12"
BHS1296-X	96" x 12"

Model #	L x W
BHS1624-X	24" x 16"
BHS1636-X	36" x 16"
BHS1648-X	48" x 16"
BHS1660-X	60" x 16"
BHS1672-X	72" x 16"
BHS1684-X	84" x 16"
BHS1696-X	96" x 16"

18GA 430 - Wall Shelves - 1.5" Rear High Riser

- 18GA 430 Series Stainless Steel
- 1.5" Rear High Riser
- 6', 7', And 8' Wall Shelves Standard w/3 Support Brackets



EWS8-1236-X

Model #	L x W
EWS8-1224-X	24" x 12"
EWS8-1236-X	36" x 12"
EWS8-1248-X	48" x 12"
EWS8-1260-X	60" x 12"
EWS8-1272-X	72" x 12"
EWS8-1284-X	84" x 12"
EWS8-1296-X	96" x 12"

Model #	L x W
EWS8-1624-X	24" x 16"
EWS8-1636-X	36" x 16"
EWS8-1648-X	48" x 16"
EWS8-1660-X	60" x 16"
EWS8-1672-X	72" x 16"
EWS8-1684-X	84" x 16"
EWS8-1696-X	96" x 16"

Wall Shelves 1.5" Rear High Riser w/Single Bar Pot Rack

- 18GA 300 Series Stainless Steel
- 1.5" Rear High Riser
- 6', 7', And 8' Wall Shelves Standard w/3 Support Brackets



BHS1236PR-X

Model #	L x W
BHS1236PR-X	36" x 12"
BHS1248PR-X	48" x 12"
BHS1260PR-X	60" x 12"
BHS1272PR-X	72" x 12"

Microwave Shelves Inverted "V" Front Edge

- 16GA 300 Series Stainless Steel
- Inverted "V" Front Edge
- Electric Cord Cut-Out With Rubber Grommet



BMS2024-X

Model #	L x W
BMS2024-X	24" x 20"
BMS2030-X	30" x 20"

Spice Shelves

- 16GA 300 Series Stainless Steel
- Includes Brackets And Mounting Hardware

Without 4" Rear High Riser

Model #	L x W
BHS5166-X	16" x 5"
BHS5186-X	18" x 5"
BHS5246-X	24" x 5"
BHS5366-X	36" x 5"
BHS5486-X	48" x 5"

With 4" Rear High Riser

Model #	L x W
BHS516R6-X	16" x 5"
BHS518R6-X	18" x 5"
BHS524R6-X	24" x 5"
BHS536R6-X	36" x 5"
BHS548R6-X	48" x 5"



BHS5166-X



BHS516R6-X



Tubular Wall Shelves

- 16GA 300 Series Stainless Steel
- 1-5/8" Tubing & Includes Brackets

Model #	L x W
BHS1624-T-X	24" X 16"
BHS1636-T-X	36" X 16"
BHS1648-T-X	48" X 16"
BHS1660-T-X	60" X 16"
BHS1672-T-X	72" X 16"



Utility Shelf

- 16GA 300 Series Stainless Steel
- 1.5" Rear & Side Risers
- Includes Hooks & Mop/Broom Holder with Locking Cam

Model #	L x W
PB-MSS824-X	24" x 8"



Mop/Broom Holder With Locking Cam

Mop Broom Holder

- Stainless Steel
- (3) Rubber Cam Grips

Model #	L x H
PB-MH-3-X	26" x 3"



Stallion Pot Racks

- 300 Series Stainless Steel
- Made of 3/16" x 2" Stainless Steel Flat Bar
- All Racks Provided With 300 Series Stainless Steel Hooks (See Chart For Quantity Per Size.)



PRW11-X



PRW21-X

Single Bar - Wall Mount Pot Racks - PRW1

Model #	Length	#Hooks
PRW11-X	48"	4
PRW12-X	60"	5
PRW13-X	72"	6
PRW14-X	96"	8
PRW15-X	120"	10

Double Bar - Wall Mount Pot Racks - PRW2

Model #	Length	#Hooks
PRW21-X	48"	8
PRW22-X	60"	10
PRW23-X	72"	12
PRW24-X	96"	16
PRW25-X	120"	20

Aluminum Dunnage Rack

- 6065 Aluminum Constructions
- 1.5" Square Tube Frame
- 1,500 lbs Weight Capacity

Model #	L x W x H
ALJB362012-X	36" x 20" x 12"
ALJB362412-X	36" x 24" x 12"
ALJB482012-X	48" x 20" x 12"
ALJB482412-X	48" x 24" x 12"
ALJB602012-X	60" x 20" x 12"
ALJB602412-X	60" x 24" x 12"



3 Tiered Aluminum Keg Rack

- Aluminum Shelves Constructed Of 1-3/4" Square Tubing
- Aluminum Posts
- (2) Adjustable Keg Storage Racks
- (1) Adjustable Top Storage Shelf
- Shipped Knocked-Down

Model #	L x W x H
ALKR-2042-X	42" x 20 x 76"
ALKR-2060-X	60" x 20 x 76"

Optional Rear Keg Strap

- Aluminum Constructed Of 1-3/4" Square Tubing
- Prevents Kegs From Sliding Off The Rear Keg Rack

Model #	L x W
ALKRS-2042-X	42" x 20"
ALKRS-2060-X	60" x 20"



ALKR-2042-X



Optional Rear Keg Strap

ALKRS-2042-X



Mobile Pan Racks (Front & Side Load)

- 6063 Aluminum Constructions
- 1" Square Tube Frame With Bolted Cross Bracing
- 3" Pan Spacing/20 Pan Capacity
- 5" Non-Locking Casters



NESTING RACKS

Standard Mobile Pan Rack

Model #	Description	L x W x H
ABPR-1820-3KD-X	Front Load	26" x 20-1/2" x 69"
ABPR-1820-PC-X	Clear Plastic Cover w/Zipper (Front Load Only)	28" x 23" x 61"
ABPR-1820-3KDS-X	Side Load	29-1/2" x 19-1/2" x 69"

ABPR-1820-3KD-X ABPR-1820-RKD-X ABPR-1820-ZN-X



ABPR-1820-3KDS-X ABPR-1820-RKDS-X ABPR-1820-ZNS-X



Rounded Top Mobile Pan Rack

Model #	Description	L x W x H
ABPR-1820-RKD-X	Front Load	26" x 20-1/2" x 69"
ABPR-1820-RKDS-X	Side Load	29-1/2" x 19-1/2" x 69-3/4"

Nesting Mobile Pan Rack (Set-Up)

Model #	Description	L x W x H
ABPR-1820-ZN-X	Front Load	26" x 20-1/2" x 69"
ABPR-1820-ZNS-X	Side Load	29-1/2" x 19-1/2" x 71"

Sheet Pan Dollies

- Aluminum Construction
- 5" Plate Casters
- Push Handle
- Sheet Pans Not Included

Model #	L x W
D1927-SP-H-X	27" x 19"



Wire Bussing Cart

- Chrome Wire Cart
- 18" Wide x 36" Long
- 3 Shelves
- Numbered Posts
- Locking Casters w/Bumpers

CWC-1836-3-X:



Formaggio Cart With Removable Boos Block® Top



- 1-1/2" Thick - Antimicrobial Northern Hard Rock Maple Removable Boos Block® Top
- 18GA Type 430 Stainless Steel Base
- (2) 18GA Type 430 Stainless Steel Fixed Shelves
- Stainless Steel Towel Bar
- (4) 3" Locking Casters



REMOVABLE TOP

Model #	L x W x H
CUFC-M1830-X	30" x 18" x 36"

Mobile Wire Cart

- Available In Northern Hard Rock Maple or American Black Walnut
- Varnique Finish Top
- 2 Chrome or Black Adjustable Wire Shelves
- 130 lbs Per Shelf Capacity Evenly Distributed
- Numbered Posts With 3" Locking Casters
- 36" Overall Height



Numbered Posts



Northern Hard Rock Maple



American Black Walnut



Chrome

Black

Model #	Wood Species	Shelf Size (LxW)	Shelf Color	Top Size (LxWxH)
MET-MWC-1-X	Maple	24" x 18"	Chrome	27" x 21" x 1-1/2"
MET-MWCK-1-X	Maple	24" x 18"	Black	27" x 21" x 1-1/2"
MET-MWC-2-X	Maple	30" x 24"	Chrome	33" x 27" x 1-1/2"
MET-MWCK-2-X	Maple	30" x 24"	Black	33" x 27" x 1-1/2"
MET-WWC-1-X	Walnut	24" x 18"	Chrome	27" x 21" x 1-1/2"
MET-WWCK-1-X	Walnut	24" x 18"	Black	27" x 21" x 1-1/2"
MET-WWC-2-X	Walnut	30" x 24"	Chrome	33" x 27" x 1-1/2"
MET-WWCK-2-X	Walnut	30" x 24"	Black	33" x 27" x 1-1/2"

Black Epoxy Wire Shelving Kit

- Zinc Based Epoxy Coated Shelving Can Be Used In Any Environment
- Includes 10 Year Warranty
- Includes 4 Posts and 4 Shelves
- 300 lbs. Max Capacity Per Shelf Evenly Distributed
- 1200 lbs Max Capacity For Total Shelving Unit
- Note: All Warranty Pro-Rated From Day Of Shipment

Black Epoxy Shelves

Shelf Size W x L	66" Tall Posts	74" Tall Posts
14" x 36"	EP-143666-BK-X	EP-143674-BK-X
14" x 48"	EP-144866-BK-X	EP-144874-BK-X
18" x 36"	EP-183666-BK-X	EP-183674-BK-X
18" x 48"	EP-184866-BK-X	EP-184874-BK-X
21" x 36"	EP-213666-BK-X	EP-213674-BK-X
21" x 48"	EP-214866-BK-X	EP-214874-BK-X
24" x 48"	EP-244866-BK-X	EP-244874-BK-X



SMRFSF0620



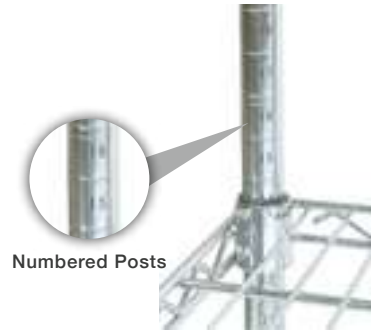
Green Epoxy



Chrome



Chrome w/Casters



Numbered Posts

Epoxy/Chrome Wire Shelving Only

- Zinc Based Epoxy Coated Shelving Can Be Used In Any Environment - Includes 10 Year Warranty
- Chrome Dry Storage Shelving - 1 Year Warranty
- 300 lbs. Max Capacity Per Shelf Evenly Distributed
- 1200 lbs Max Capacity For Total Shelving Unit
- Note: All Warranty Pro-Rated From Day Of Shipment
- **Wire Shelving Posts Sold Separately On Page 51.**

Wire Shelving - 14" Wide

Shelf Size (W x L)	WT/LB Each	# Shipped Per CTN	Chrome Shelves Model #	Green Epoxy Shelves Model #	Black Epoxy Shelves Model #
14" x 24"	6 lbs	4	CS-1424-X	EPS-1424-G-X	EPS-1424-BK-X
14" x 30"	7 lbs	4	CS-1430-X	EPS-1430-G-X	EPS-1430-BK-X
14" x 36"	8 lbs	4	CS-1436-X	EPS-1436-G-X	EPS-1436-BK-X
14" x 42"	9 lbs	4	CS-1442-X	EPS-1442-G-X	EPS-1442-BK-X
14" x 48"	10 lbs	4	CS-1448-X	EPS-1448-G-X	EPS-1448-BK-X
14" x 54"	11 lbs	4	CS-1454-X	EPS-1454-G-X	EPS-1454-BK-X
14" x 60"	14 lbs	2	CS-1460-X	EPS-1460-G-X	EPS-1460-BK-X
14" x 72"	16 lbs	2	CS-1472-X	EPS-1472-G-X	EPS-1472-BK-X

Wire Shelving - 18" Wide

Shelf Size (W x L)	WT/LB Each	# Shipped Per CTN	Chrome Shelves Model #	Green Epoxy Shelves Model #	Black Epoxy Shelves Model #
18" x 24"	7 lbs	4	CS-1824-X	EPS-1824-G-X	EPS-1824-BK-X
18" x 30"	8 lbs	4	CS-1830-X	EPS-1830-G-X	EPS-1830-BK-X
18" x 36"	9 lbs	4	CS-1836-X	EPS-1836-G-X	EPS-1836-BK-X
18" x 42"	10 lbs	4	CS-1842-X	EPS-1842-G-X	EPS-1842-BK-X
18" x 48"	12 lbs	4	CS-1848-X	EPS-1848-G-X	EPS-1848-BK-X
18" x 54"	14 lbs	2	CS-1854-X	EPS-1854-G-X	EPS-1854-BK-X
18" x 60"	15 lbs	2	CS-1860-X	EPS-1860-G-X	EPS-1860-BK-X
18" x 72"	18 lbs	2	CS-1872-X	EPS-1872-G-X	EPS-1872-BK-X

Wire Shelving - 21" Wide

Shelf Size (W x L)	WT/LB Each	# Shipped Per CTN	Chrome Shelves Model #	Green Epoxy Shelves Model #	Black Epoxy Shelves Model #
21" x 24"	7 lbs	4	CS-2124-X	EPS-2124-G-X	EPS-2124-BK-X
21" x 30"	9 lbs	4	CS-2130-X	EPS-2130-G-X	EPS-2130-BK-X
21" x 36"	10 lbs	4	CS-2136-X	EPS-2136-G-X	EPS-2136-BK-X
21" x 42"	11 lbs	4	CS-2142-X	EPS-2142-G-X	EPS-2142-BK-X
21" x 48"	13 lbs	4	CS-2148-X	EPS-2148-G-X	EPS-2148-BK-X
21" x 54"	15 lbs	2	CS-2154-X	EPS-2154-G-X	EPS-2154-BK-X
21" x 60"	17 lbs	2	CS-2160-X	EPS-2160-G-X	EPS-2160-BK-X
21" x 72"	20 lbs	2	CS-2172-X	EPS-2172-G-X	EPS-2172-BK-X

Wire Shelving - 24" Wide

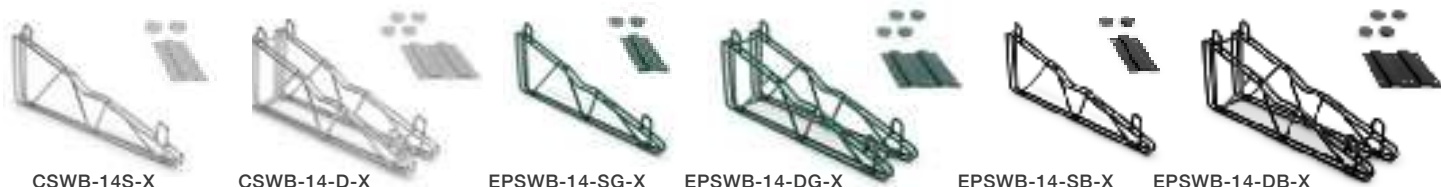
Shelf Size (W x L)	WT/LB Each	# Shipped Per CTN	Chrome Shelves Model #	Green Epoxy Shelves Model #	Black Epoxy Shelves Model #
24" x 24"	8 lbs	4	CS-2424-X	EPS-2424-G-X	EPS-2424-BK-X
24" x 30"	10 lbs	4	CS-2430-X	EPS-2430-G-X	EPS-2430-BK-X
24" x 36"	12 lbs	4	CS-2436-X	EPS-2436-G-X	EPS-2436-BK-X
24" x 42"	14 lbs	4	CS-2442-X	EPS-2442-G-X	EPS-2442-BK-X
24" x 48"	15 lbs	4	CS-2448-X	EPS-2448-G-X	EPS-2448-BK-X
24" x 54"	18 lbs	2	CS-2454-X	EPS-2454-G-X	EPS-2454-BK-X
24" x 60"	18 lbs	2	CS-2460-X	EPS-2460-G-X	EPS-2460-BK-X
24" x 72"	24 lbs	2	CS-2472-X	EPS-2472-G-X	EPS-2472-BK-X

Epoxy/Chrome Posts NSF

• Wire Shelving Sold Separately On Page 50.



Post Size	WT/LB Each	# Shipped Per CTN	Chrome Posts Model #	Green Epoxy Posts Model #	Black Epoxy Posts Model #
13"	1	4	CP-13-X	EPP-13-G-X	EPP-13-BK-X
33"	4	4	CP-33-X	EPP-33-G-X	EPP-33-BK-X
54"	4	4	CP-54-X	EPP-54-G-X	EPP-54-BK-X
66"	4	4	CP-66-X	EPP-66-G-X	EPP-66-BK-X
74"	5	4	CP-74-X	EPP-74-G-X	EPP-74-BK-X
86"	6	4	CP-86-X	EPP-86-G-X	EPP-86-BK-X



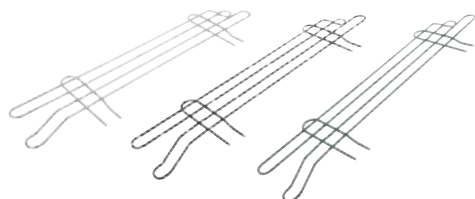
Wire Shelving Wall Brackets NSF

- Wall Brackets Sold Individually
- Available As Single or Double Wall Bracket
- Wire Shelving Sold Separately On Page 50.

Model #	Description	Depth
CSWB-14-S-X	Chrome/Single	14"
CSWB-18-S-X	Chrome/Single	18"
EPSWB-14-SG-X	Green Epoxy/Single	14"
EPSWB-18-SG-X	Green Epoxy/Single	18"
EPSWB-14-SB-X	Black Epoxy/Single	14"
EPSWB-18-SB-X	Black Epoxy/Single	18"
CSWB-14-D-X	Chrome/Double	14"
CSWB-18-D-X	Chrome/Double	18"
EPSWB-14-DG-X	Green Epoxy/Double	14"
EPSWB-18-DG-X	Green Epoxy/Double	18"
EPSWB-14-DB-X	Black Epoxy/Double	14"
EPSWB-18-DB-X	Black Epoxy/Double	18"

Wire Shelf Support Bracket NEW

- Securely Mounts Wire Shelving Post To Wall
- Available In Chrome Finish
- Wire Shelf Support Bracket Sold Individually
- Post Or Shelving Not Included



Chrome & Epoxy Ledges NSF

Chrome Ledge Model #	Epoxy Ledge Model #	Length
CS-L24-X	EPS-L24-G-X/B-X	24"
CS-L36-X	EPS-L36-G-X/B-X	36"
CS-L48-X	EPS-L48-G-X/B-X	48"
CS-L60-X	EPS-L60-G-X/B-X	60"
CS-L72-X	EPS-L72-G-X/B-X	72"



Chrome & Epoxy Dividers NSF

Chrome Dividers Model #	Epoxy Dividers Model #	Length
CS-D14-X	EPS-D14-G-X/B-X	14"
CS-D18-X	EPS-D18-G-X/B-X	18"
CS-D21-X	EPS-D21-G-X/B-X	21"
CS-D24-X	EPS-D24-G-X/B-X	24"

S-Hooks

Model #	Color
SHKS-2-X (Set of 2)	Chrome
SHKS-2G-X (Set of 2)	Green



5" Locking Casters w/Bumpers

Model #
CASWS05-4-X (Set of 4)



DINING TOPS/METAL TABLE BASES



Phone: (888) 431-2667



Dining Tops (Call For Dining Top Quotes)

**NOT AVAILABLE FOR
FREE FREIGHT PROGRAM**

Species (Available In Standard or Blended Tops.)



Northern Hard Rock
Maple



American
Cherry



American Black
Walnut



Appalachian Red Oak
(Comes in natural or stained.)



Stainless Steel

Stains (For Appalachian Red Oak Only)



Sherwood



Walnut



Century



Mahogany

Edge Details



Standard
1/4" Radius



Optional
Double 1/4" Radius

Top Shapes



Round



Square



Rectangular



Oval



Four Corner Drop Leaf
(Available In
Standard Tops Only.)



Octagonal

Fax: (800) 433-2667

SMRFSF0620

Stainless Steel Table Bases



- Square Stainless Steel Table Base With 3" Round Column
- 17.5" Cast Iron Top Plate Spider
- Adjustable Leveling Feet
- Brushed Stainless Steel Finish
- Dining Height Table Bases Stand 28.25" To The Top Of The Spider
- Bar Height Table Bases Stand 40.25" To The Top Of The Spider
- Call Factory For Dining Top Quotes

ASSEMBLY VIDEO ONLINE AT
YOUTUBE.COM/JOHNBOOSCO



STB-2230-X

STB-2242-X

RECOMMENDED DINING TOP SIZES

Top Size	Qty Of Bases	Top Size	Qty Of Bases
SQUARE & RECTANGLE			
24" x 24"	1	24" x 60"	2
24" x 30"	1	24" x 72"	2
24" x 36"	1	24" x 84"	2
24" x 42"	1	24" x 96"	2
24" x 48"	1	30" x 60"	2
30" x 30"	1	30" x 72"	2
30" x 36"	1	30" x 84"	2
30" x 42"	1	30" x 96"	2
30" x 48"	1	36" x 48"	2
36" x 36"	1	36" x 60"	2
36" x 42"	1	36" x 72"	2
-	-	36" x 84"	2
-	-	36" x 96"	2
-	-	42" x 42"	2

RECOMMENDED DINING TOP SIZES

Top Size	Qty Of Bases
ROUND	
24"	1
30"	1
36"	1
42"	1

Base Spread	Spider Size	Dining Height Model #	Bar Height Model #
21-1/4" x 21-1/4"	17.5"	STB-2230-X	STB-2242-X



Black Metal Table Bases

- Dining Height Table Bases Stand 28" To The Top Of The Spider
- Bar Height Table Bases Stand 40.5" To The Top Of The Spider
- Call Factory For Dining Top Quotes

Recommended Top Size	Base Spread	Spider Size	Weight	Dining Height Model #	Bar Height Model #
24"-30"	18" dia.	13"	26 lbs	1917B-X	1917B40-X
36"-42" or 30"-42"	22" dia.	13"	35 lbs	1922B-X	1922B40-X
48"-60"	30" dia.	15"	50 lbs	1930B-X	1930B40-X
24"-30"	22" x 22"	13"	19 lbs	2015B-X	2015B40-X
36"-42"	30" x 30"	13"	22 lbs	2025B-X	2025B40-X
48"-96" (set of 2)	22" x 5"	13"	30 lbs	2065B-X	2065B40-X
120"-144" (set of 3)	22" x 5"	13"	45 lbs	2065B3-X	2065B340-X
Oblong	24" x 30"	13"	21 lbs	2099B-X	2099B40-X

Email Your Orders To: purchaseorders@johnboos.com • www.johnboos.com

★ PLATINUM ★

Commercial Series Wood Cutting Board

Platinum Commercial Series Wood Cutting Boards

- 1-3/4" Thick - Antimicrobial Northern Hard Rock Maple (NSF)
- Premium Foodservice Quality
- 1/4" Radius Edges
- Reversible With Recessed Finger Grips
- Edge Grain Construction
- Antimicrobial Boos Block® Cream With Beeswax Finish
- Must be ordered in case pack quantities to avoid broken carton charge.
- All less than case pack orders will be subject to a \$3.00 broken carton charge.
- Only 1 broken carton charge per model number.



NOTE: ALL CUTTING BOARDS MUST FOLLOW MAP PRICING REGARDLESS OF CURRENT FLYER PRICING.

Model #	Units Per Pack	L x W x H
R1812	3	18" x 12" x 1-3/4"
R2015	3	20" x 15" x 1-3/4"
R2418	2	24" x 18" x 1-3/4"

Food Specific Wood Cutting Boards

- 1" Thick - Antimicrobial Northern Hard Rock Maple
- Food Specific Laser Engraving
- Reversible With 4" Finger Grip Cutouts On Sides
- Edge Grain Construction
- Antimicrobial Boos Block® Board Cream With Beeswax Finish

NOTE: ALL CUTTING BOARDS MUST FOLLOW MAP PRICING REGARDLESS OF CURRENT FLYER PRICING.



Model #	(L x W x H)	Engraving
CB4C-M201401-CM-X	20" x 14" x 1"	Cooked Meat
CB4C-M201401-DC-X	20" x 14" x 1"	Dairy/Cheese
CB4C-M201401-FS-X	20" x 14" x 1"	Raw Fish/Seafood
CB4C-M201401-P-X	20" x 14" x 1"	Produce
CB4C-M201401-RM-X	20" x 14" x 1"	Raw Meat
CB4C-M201401-RP-X	20" x 14" x 1"	Raw Poultry



CB4C-M201401-CM-X



CB4C-M201401-DC-X



CB4C-M201401-FS-X



CB4C-M201401-P-X



CB4C-M201401-RM-X



CB4C-M201401-RP-X

Caution: Freight Claims

Before accepting any shipment, examine it carefully and note any damage or shortage on the Freight Bill before signing for delivery. All claims for shortage or damage must be filed with the carrier. Title passes from John Boos & Co. to the purchaser at point of origin of shipment. If, after receipt of shipment, concealed damage is discovered, immediately notify the delivering carrier requesting immediate inspection. The inspection report should be used to support your claims against the carrier.

Return Shipments

We will not accept any returned merchandise unless written authorization has been issued. Any claims for defective materials or workmanship should be mailed to the factory.

For return of UNUSED merchandise in A-1 condition - there is a 25% or greater restocking charge for AUTHORIZED returns. John Boos & Co. reserves the right to deny returned merchandise.

Warranty

The only warranty, expressed or implied, is a 1-year guarantee against defect in workmanship and material.

This warranty does not apply to damages which may result from neglect, accidental or intentional damage, damage or wear to any swivel mechanism, normal wear and tear, misuse of product, unauthorized repair, exposure to extremes in temperature and humidity, and alteration or abuse of the product. Wood products ordered "unfinished" do not come with a warranty.

Factory obligation under this warranty, is limited, at the option of John Boos & Co. to repair or replacement of the product (or one of equal type and quality if the product is no longer available), within 90 days after the receipt of written recommendation from the dealer, provided none of the above exceptions are evident.

John Boos & Co. shall not be liable for any loss or damage arising from use, or for consequential damages. This warranty gives certain legal rights and there may be other rights that vary from state to state.

Freight Program

- Free Freight for mixed stainless steel flyer items on order of \$3,500.00 net or more Shipments Continental U.S.A. only
- Wire Shelving Freight Program:
 - Free freight on minimum wire shelving orders of \$2,000.00 or more
 - Maximum freight charge on wire shelving orders less than \$2,000.00 will not exceed \$250.00 on non-qualifying orders.
 - Wire shelving will ride free with minimum order of \$3,500.00 stainless steel promotional flyer product
- 24 hours for concealed damage - retain original package
- Price F.O.B. Factory
- Product subject to item availability
- 2-3 week lead time for fabricated product not in inventory on standard work tables and dish tables (E-Series not included)
- Flyer subject to change without notice
- No modifications to flyer product
- All Prices Dealer Net

**Boos**
lockS

AutoQuotes

Connect With Us!





**John
BOOS**
Since 1887

P.O. Box 609
3601 S. Banker St.
Effingham, IL 62401
www.johnboos.com
Ph: 888-431-2667 Fax: 800-433-2667
CHANGE SERVICE REQUESTED

Hand Sanitizer Stand

NEW

- 16GA Type 300 Series Stainless Steel With #4 Polish Satin Finish
- Height Adjustable Support Arm Fits Up To 16" Tall Dispensers With Less Than 2" Diameter Collar
- 8" x 8" Base Fits Dispenser Bases Up To 7" In Diameter
- Base Plate Is Slotted For The Height Adjustable Support Arm Stability
- 16" x 16" Weighted Square Base For Added Stability With Leveling Feet
- Knockdown Design
- *Note: Dispenser Not Included*

Model #	Dimensions (L x W x H)	Maximum Overall Height
SDS-SB-2-X	16" x 16" x 24"	40"
SDS-SB-3-X	16" x 16" x 36"	52"



NEW PRODUCTS

Hygiene Station

NEW

- 18GA Stainless Steel Construction
- Type 300 stainless steel with #4 polish satin finish
- Includes wall mount hand sanitizer dispenser
- Three compartments to hold latex gloves, masks, or tissues
- Made in the USA
- *Note: Gloves & Masks Not Included.*

Model #	Dimensions (L x W x H)
DS-SD1-3-X	20-1/2" x 4-9/16" x 11-1/8"

