



BEVERAGE-AIR

Project: _____	AIA#
Item: _____	
Location: _____	SIS#
Approved: _____	

DW79HC DEEP WELL SERIES: HORIZONTAL BOTTLE COOLERS

HORIZONTAL BOTTLE COOLERS

DW79HC Frosty Brew Deep Well Series
Hydrocarbon Series

MODEL:
DW79HC-B-29




3 Year Parts/Labor Warranty
Additional 4 Year Compressor Warranty

CABINET CONSTRUCTION

- Exterior features durable black painted steel
- Galvanized steel interior and floor
- Full electronic control
- Tops include easy glide, stainless steel lids (3)
- Stainless steel countertop with integral glass stops
- Five (5) epoxy coated adjustable wire dividers
- Bottle opener and cap catcher standard
- Constructed with high cooling RPM fans to provide fast cooling

OPTIONS & ACCESSORIES

- Stainless steel interior
- Wire divider
- Lid locks
- 3" Casters or 6" adjustable leg with plate
- Remote option* (see note on back on page)

REFRIGERATION SYSTEM

- Refrigeration system uses R290 refrigerant to comply with all environmental concerns
- Automatic, non-electric defrost
- Epoxy coated evaporator coil
- Forced air refrigeration system holds product between 30°-32°F




Please verify qualifying units by visiting:
www.energystar.gov/cfs

3779 Champion Blvd., Winston-Salem, NC 27105
1-888-845-9800 Fax: 1-336-245-6453
Beverage-Air.com Sales@bevair.com



BEVERAGE-AIR

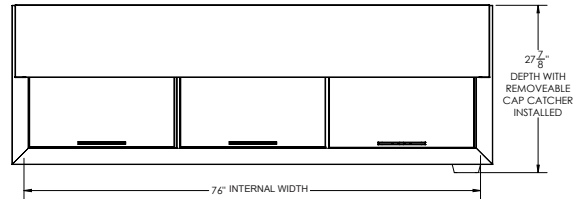


Horizontal Bottle Coolers - Deep Well Model: DW79HC-B-29

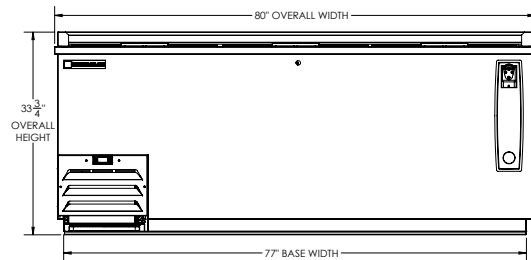
MODEL	DW79HC-B-29
EXTERNAL DIMENSIONAL DATA	
Width Overall	80"
Depth Overall	26 1/2"
Depth Overall with Cap Catcher	27 7/8"
Height Overall	33 3/4"
Number of Lids	3
INTERNAL DIMENSIONAL DATA	
NET Capacity (cubic ft.)	24.1
Internal Width Overall (in)	76"
Internal Depth Overall (in)	22 3/4"
Internal Height Overall at Step (in)	15 5/8"
Internal Height Overall (in)	26 3/4"
Number of Dividers	5
12 oz. Bottle Capacity	32 Cases
12 oz. Can Capacity	45 3/4 Cases
ELECTRICAL DATA	
Full Load Amperes	2.5
REFRIGERATION DATA	
Horsepower	1/4
Capacity (BTU/Hr)	1702
Heat Rejection (BTU/Hr)	2553
Charge (lbs/grams)	0.2314/105
SHIPPING DATA	
Gross Weight - Crated	432 lbs
Height - Crated	38"
Width - Crated	83"
Depth - Crated	30"

*NOTE: Remote units are field wired and come with 6" legs.
Refrigerant must be specified at time of order.

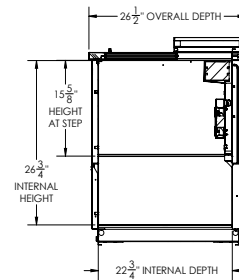
Model Views



PLAN VIEW



ELEVATION VIEW



SIDE VIEW

ELECTRICAL CONNECTION



115/60/1
NEMA 5-15P

Unit pre-wired at factory and include 8' long cord and plug set.



3779 Champion Blvd., Winston-Salem, NC 27105 1-888-845-9800 Fax: 1-336-245-6453 Beverage-Air.com Sales@bevoir.com

an Ali Group Company



The Spirit of Excellence