

"WCH" WALL CABINETS

Stainless Steel w/Hinged Doors

FEATURES:

- Type 300 Stainless Steel With #4 Polish Satin Finish
- Includes Fixed Shelf
- (2) Swinging Doors With Integral Handles
- Mounting Rail On Top Back For Ease Of Mounting To Wall

SPECIFICATIONS:

- Stainless Steel Cabinet TIG Welded, Exposed Welds Are Polished To Match Adjacent Surface
- 18GA Type 300 Stainless Steel With #4 Polish, Satin Finish



SWINGING DOORS WITH INTEGRAL HANDLES



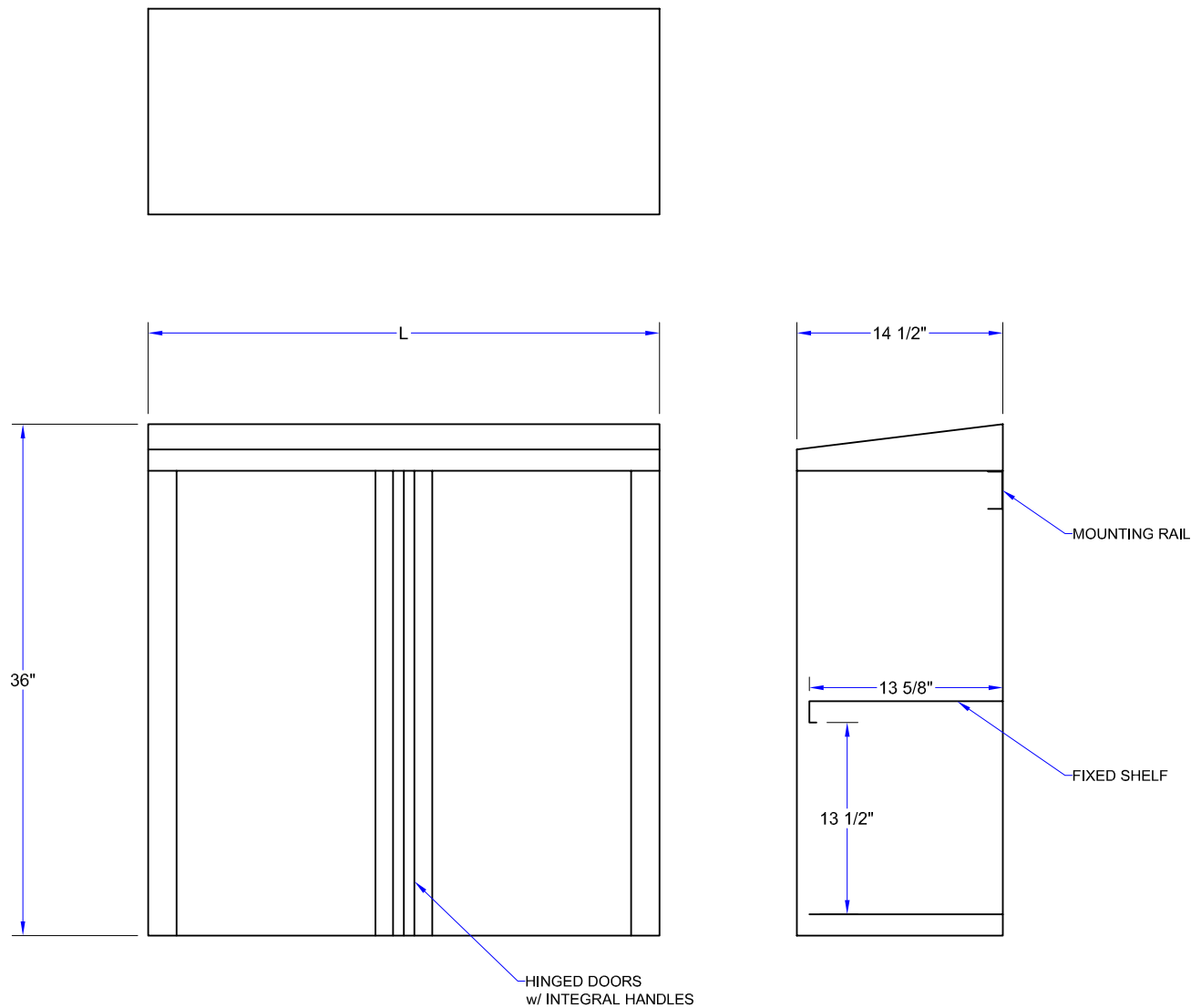
WCH-36

"WCH" STAINLESS STEEL WALL CABINETS

MODEL	SIZE (L X W X H)	WEIGHT (LBS)
WCH-36	36"x14-1/2"x36"	98
WCH-48	48"x14-1/2"x36"	125
WCH-60	60"x14-1/2"x36"	151

ALL DIMENSIONS ARE TYPICAL. TOLERANCE +/- .500". JOHN BOOS & CO. RESERVES THE RIGHT TO CHANGE SPECIFICATIONS WITHOUT NOTICE.

DETAILED SPECIFICATIONS



"WCH" STAINLESS STEEL WALL CABINETS

MODEL	SIZE (L X W X H)	WEIGHT (LBS)
WCH-36	36"x14-1/2"x36"	98
WCH-48	48"x14-1/2"x36"	125
WCH-60	60"x14-1/2"x36"	151

ALL DIMENSIONS ARE TYPICAL. TOLERANCE +/- .500". JOHN BOOS & CO. RESERVES THE RIGHT TO CHANGE SPECIFICATIONS WITHOUT NOTICE.