



# BEVERAGE-AIR

|                 |      |
|-----------------|------|
| Project: _____  | AIA# |
| Item: _____     |      |
| Location: _____ | SIS# |
| Approved: _____ |      |

**BB24HC BACK BAR REFRIGERATOR: FOOD RATED**

## BAR EQUIPMENT- BACK BAR REFRIGERATOR

**MODEL:  
BB24HC-1-FG-B**

BB24HC Glass Door Food Rated  
Hydrocarbon Series

**5 Year Parts/Labor Warranty Available  
7 Year Compressor Warranty**



### CABINET CONSTRUCTION

- Exterior features durable black painted steel
- Stainless steel interior
- Full electronic control
- 1 1/2" Stainless steel top
- Two (2) epoxy coated shelves
- Self-closing door with 120° stay-open feature
- Field reversible door (hinge kit not included)
- LED lighting
- Certified for open food product
- Four (4") heavy duty casters 2 with locks
- Balanced, forced air refrigeration system provides rapid chilling of product

### OPTIONS & ACCESSORIES

- 3 Year parts/labor standard, additional 2 year warranty available
- Stainless steel exterior
- Wine model (40°-60° models)
- Underbar model option
- Galvanized sub-top

### REFRIGERATION SYSTEM

- Uses environmentally friendly, energy efficient R290 refrigerant, and meets all regulatory requirements for CARB, SNAP, DOE & more
- Adaptive defrost
- Epoxy coated evaporator coil
- Maintains product temperature between 36°F and 38°F



Please verify qualifying units by visiting:  
[www.energystar.gov/cfs](http://www.energystar.gov/cfs)

3779 Champion Blvd., Winston-Salem, NC 27105  
1-888-845-9800 Fax: 1-336-245-6453  
Beverage-Air.com Sales@bevair.com



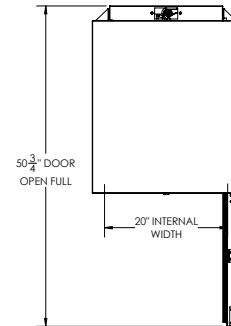
# BEVERAGE-AIR®

| MODEL                            | BB24HC-1-FG-B |
|----------------------------------|---------------|
| <b>EXTERNAL DIMENSIONAL DATA</b> |               |
| Width Overall                    | 24"           |
| Depth Overall                    | 30 1/8"       |
| Height Overall                   | 37 3/4"       |
| Number of Doors                  | 1             |
| Depth with Door Open 90°         | 50 3/4"       |
| Door Opening (in)                | 19 3/4" x 28" |
| <b>INTERNAL DIMENSIONAL DATA</b> |               |
| NET Capacity (cubic ft.)         | 7.66          |
| Internal Width Overall (in)      | 20"           |
| Internal Depth Overall (in)      | 22 1/4"       |
| Internal Height Overall (in)     | 29 1/2"       |
| Number of Shelves                | 2             |
| Number of 1/2 Kegs               | 1             |
| <b>ELECTRICAL DATA</b>           |               |
| Full Load Amperes                | 2.0           |
| <b>REFRIGERATION DATA</b>        |               |
| Horsepower                       | 1/6           |
| Capacity (BTU/Hr)                | 1094          |
| Heat Rejection (BTU/Hr)          | 1641          |
| Charge (lbs/grams)               | 0.1213/55     |
| <b>SHIPPING DATA</b>             |               |
| Gross Weight - Crated            | 200 lbs       |
| Height - Crated                  | 46"           |
| Width - Crated                   | 27"           |
| Depth - Crated                   | 32"           |

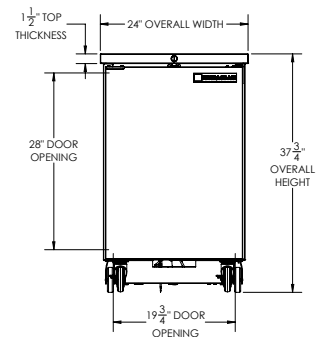
\*NOTE: Remote units are field wired and come with 6" legs.  
Refrigerant must be specified at time of order.

## Bar Equipment-Back Bar Refrigerator Model: BB24HC-1-FG-B

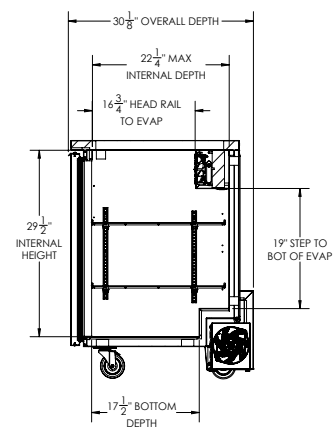
### Model Views



### PLAN VIEW



### ELEVATION VIEW



### SIDE VIEW



### ELECTRICAL CONNECTION

115/60/1  
NEMA 5-15P

Unit pre-wired at factory  
and include 8' long cord  
and plug set.