



**TOP SHELF FULL DEPTH CHEMICAL STORAGE CABINETS**  
*TSF Series 12" & 24"W x 24"D*

MODEL NUMBERS - TSF12CM, TSF24CM

JOB	
AREA	
ITEM NO.	
MODEL NO.	

<b>MODELS</b>
TSF12CM
TSF24CM



TSF12CM



TSF24CM

**KEY PRODUCT FEATURES AND BENEFITS**

- Sink unit designed with wet waste strainer, rinsing hose, and removable chemical storage pan intended for use in conjunction with glass washers.
- Drawn, 18 gauge stainless steel sink bowl and work surface has a long life span and is dent resistant, even under heavy use.
- Seamless 18 gauge stainless steel front apron for durability and easy of cleaning.
- Wet waste sink with removable dump box.
- Chemical storage compartment with convenient removable water tight pan that keeps chemical containers off the floor.

**Additional Features:**

- Our new, more robust Perlick Quick Clamp leg attachment still features easy tool-less installation, when legs are used.
- Optional Perlick Flex Mount leg relocation kit moves rear legs forward for additional space behind the equipment or moves forward legs rearward to help avoid pesky floor drains, available on TSF12CM.
- Stainless steel legs with adjustable thermoplastic feet install without tools for freestanding applications.

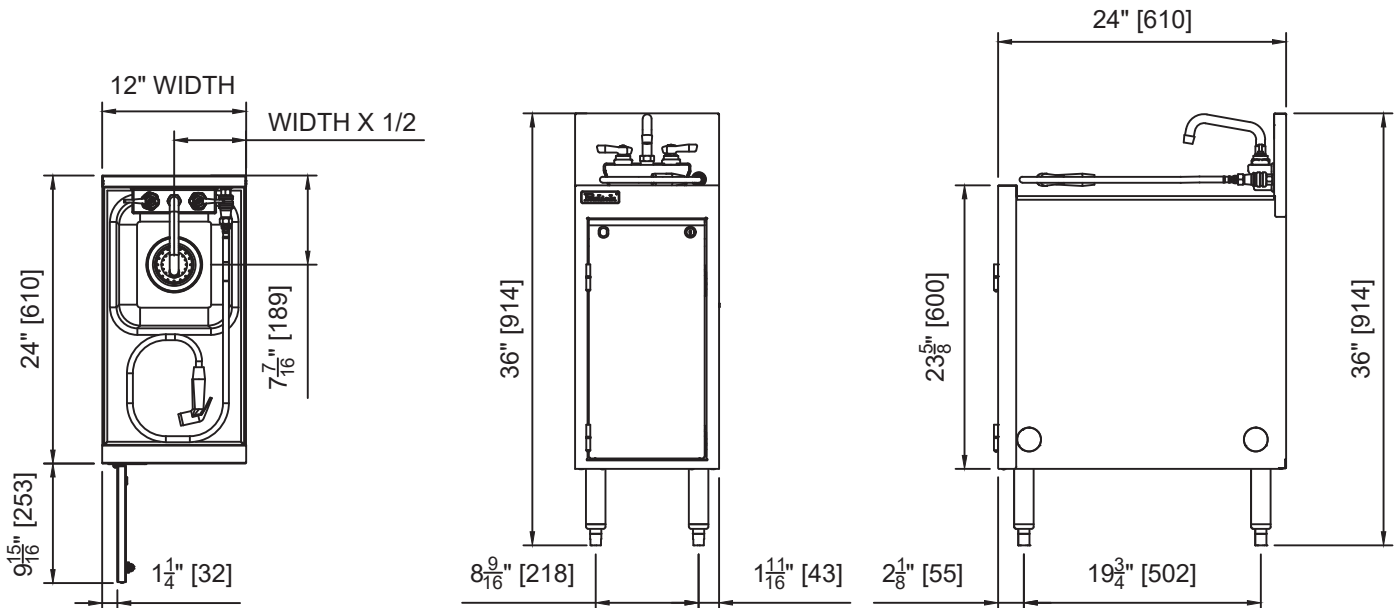


**TOP SHELF FULL DEPTH CHEMICAL STORAGE CABINETS**  
**TSF Series 12" & 24"W x 24"D**

MODEL NUMBERS - TSF12CM, TSF24CM

MODEL NOS.		TSF24CM	TSF12CM
DIMENSIONS: EXTERIOR	Width In. (mm)	24 (610)	12 (305)
	Depth In. (mm)	24 (610)	
	Weight lb. (kg)	91 (42)	58 (26)
MATERIALS	Construction	All stainless steel	
	Top	All horizontal and vertical edges 1/4" radius with balled corners.	
	Sink	Drawn, 18 gauge stainless steel. All horizontal and vertical edges 1-1/2" radius with balled corners. Furnished with 1-1/2" stainless steel drain socket. 10-5/8" x 9-5/8" x 6" deep.	
	Backsplash	Stainless steel 6" or 4" with 1" return at top, mechanically fastened and sealed	
	Legs	1-5/8" tubular, stainless steel with 1" adjustable thermoplastic feet	
	Water Faucet	Hot and cold, heavy-duty all brass construction, chrome plated goose-neck faucet. <b>Must be ordered separately.</b>	
	Spray Hose	Black, plastic spray head with four foot reinforced vinyl hose and quick disconnect fitting	
	Chemical Compartment	Removable stainless steel chemical pan	
PLUMBING	Drain Connection	Drain connection - 1-1/2" NPS Male. Spray Hose - 3/8" O.D. copper supply tube.	
OPTIONAL ACCESSORIES		Glass racks (Part No. 50470-2)	Field reversible door (Part No. DR12SC)

**TSF12CM**

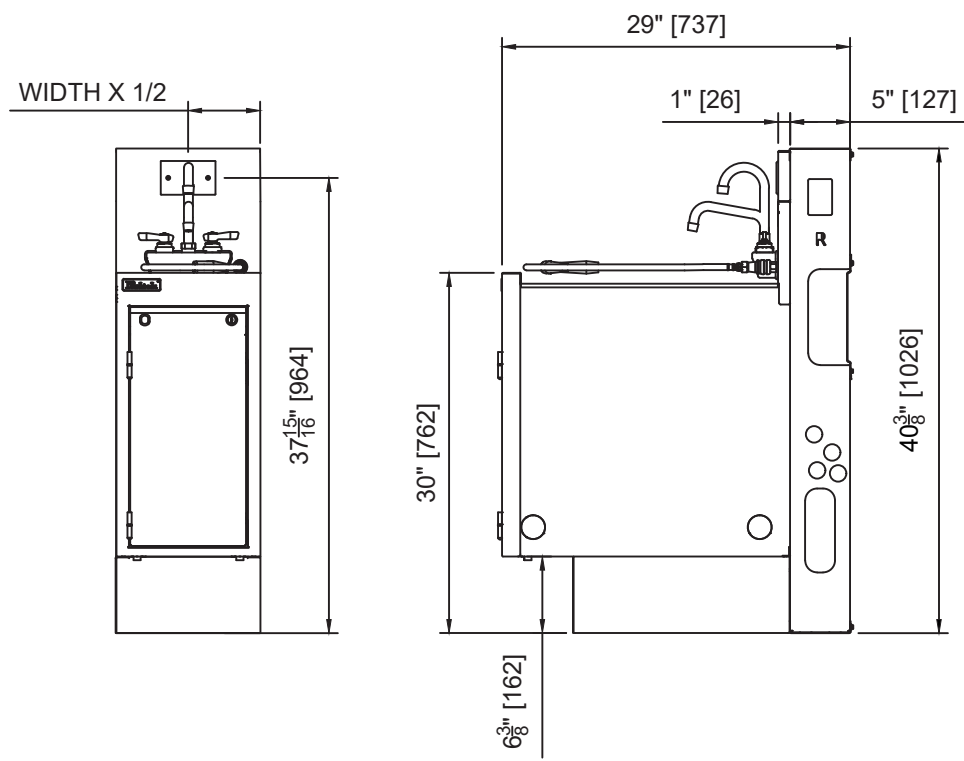
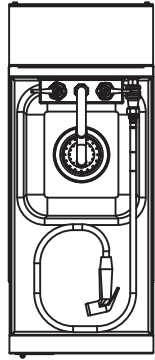


Shown with optional faucet. Must be ordered separately.

Form No. Z2969  
Rev. 12.11.23



**TOP SHELF FULL DEPTH CHEMICAL STORAGE CABINETS**  
*TSF Series 12" & 24"W x 24"D*

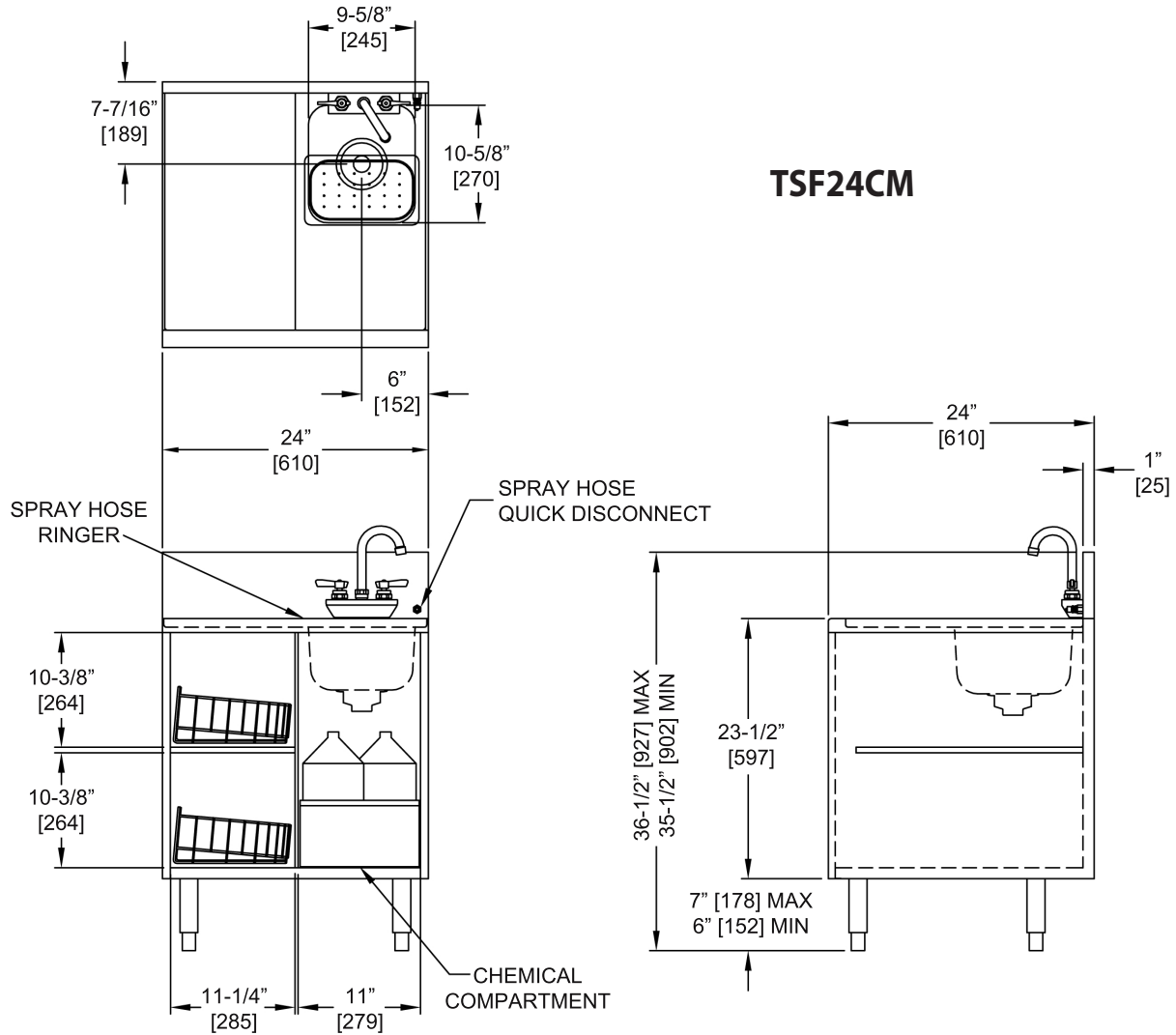


Shown with optional faucet. Must be ordered separately.

Form No. Z2969  
Rev. 12.11.23



**TOP SHELF FULL DEPTH CHEMICAL STORAGE CABINETS**  
 TSF Series 12" & 24"W x 24"D



Shown with optional faucet. Must be ordered separately.

Form No. Z2969  
 Rev. 12.11.23