

Cuisine Series Heavy Duty Even Heat Hot Top Range

Project _____
Item _____
Quantity _____
CSI Section 11400
Approved _____
Date _____

Models

- C36-9R
- C36-9S
- C36-9C
- C36-9M



Model C36-9R
Range with Two 18"
Even Heat Hot Tops

Standard Features

- 32,500 BTU/h (NG) hot tops
- Stainless steel front and sides
- Stainless steel front rail
- Stainless steel burner box
- 1-1/4" NPT front gas manifold
- Can be installed individually or in a battery
- 7" (178mm) high stainless steel stub back
- 6" (152mm) stainless steel adj. legs
- Porcelain oven interior w/removable bottom
- R model - 4 rack positions
- C model - 3 rack positions
- R model - 1 chrome plated rack
- C model - 3 chrome plated racks
- Fully insulated oven interior
- Safety oven pilot
- Oven thermostat control: 150°-500°F (66°- 260°C) (R/C)
- Range base convection oven (C) c/w NEMA 5-15P cord & plug, 1/3 hp motor, 120V 60Hz, 0.6A
- Modular unit (M) can be mounted on Polar Cuisine refrigerated base

Options & Accessories

- Stainless steel oven interior in lieu of porcelain oven interior - NC
- Single or double deck high shelf or back riser
- Full height stand for modular base with legs or casters
- Stainless steel intermediate shelf for cabinet base
- Stainless steel door(s) for cabinet base units
- Stainless steel back
- Continuous plate rail, 48-72" for battery installations
- Gas shut-off valves: 3/4" (M/S models only), 1", 1 1/4" NPT (Specify)
- Gas regulator: 3/4" (M/S models only), 1", 1 1/4" NPT (Specify)
- Gas flex hose w/ quick disconnect: 3/4" (M/S models only), 1", 1 1/4" NPT (Specify)
- Rear Gas Connection: 3/4" (M/S models only), 1", 1 1/4" NPT (Specify)
- Set of (4) flanged feet (for fastening unit to the floor)
- Set of (4) 5" polyurethane non-marking swivel casters w/front brakes
- Set of (4) 6" swivel casters, w/front brakes
- Extra oven rack
- Extension for 1/9 pans

Specifications

Garland Cuisine 36" (914mm) wide Heavy Duty Range Series. Model _____ with total BTU/h rating of _____ when used with natural/propane gas. Stainless steel front and sides. 6" (152mm) legs with adjustable feet.

Ovens - One piece oven door. Stainless steel oven interior with a heavy-duty, "keep-cool" door handle. Standard oven comes with a thermostat with a temperature range from 150°F (low) to 500°F (66°- 260°C).

18" (305mm) Section Hot Tops - 32,500 BTU/h each burner with one per plate.

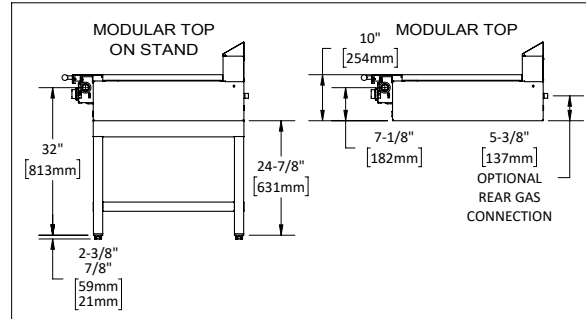
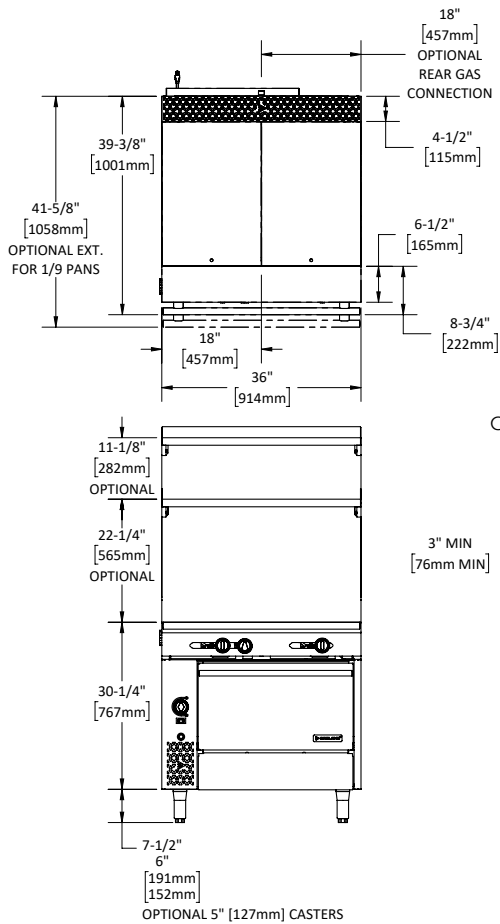
Note: Range-based convection oven models can be located in the middle of a battery, banked back-to-back with other equipment, and can be positioned against a wall

NOTE: Ranges supplied with casters must be installed with an approved restraining device.

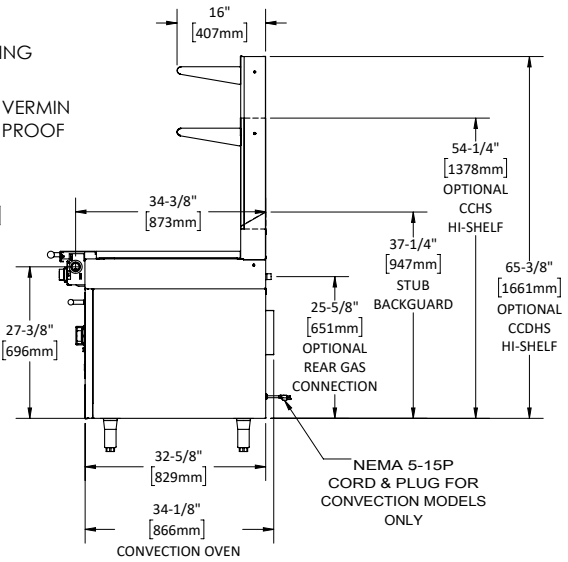
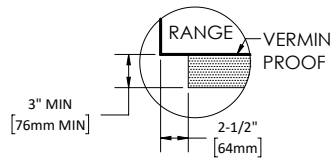


Cuisine Series Heavy Duty Even Heat Hot Top Range

Cuisine Series Heavy Duty Even Heat Hot Top Range



CURB/DAIS MOUNTING



Model #	Description	Total BTU/h (NAT. Gas)	Total BTU/h Propane	Shipping	
				Cu Ft	lbs/kg
C36-9R	Two (2) Hot Tops - Standard Oven	105,000	100,000	53	590/268
C36-9C*	Two (2) Hot Tops - Convection Oven	102,000	100,000	53	590/268
C36-9S	Two (2) Hot Tops - Storage Base	65,000	65,000	53	427/194
C36-9M	Two (2) Hot Tops - Modular Top	65,000	65,000	30	342/155

*1/3 hp motor 120V 60 Hz 0.6A c/w NEMA 5-15P cord & plug.

Combustible Wall Clearance	
Sides	Back
10" (254mm)	6" (152mm)

Individual Burner Ratings (BTU/h)					
Burner	NAT.	PRO.	Burner	NAT.	PRO.
Hot Top	32,500	32,500	Std. Oven	40,000	35,000
			Conv. Oven	37,000	35,000

Interior Dimensions: In (mm)			
Product	Height	Width	Depth
Standard Oven	13-1/2 (343)	26-1/4 (667)	29 (737)
Convection Oven	13-1/2 (343)	26-1/4 (667)	25 (635)
Cabinet Base	20-1/2 (521)	32-1/4 (819)	31 (787)

Gas Pressure	NAT.	PRO.
Minimum Supply	7" WC	11" WC
Manifold Operating Pressure	6" WC	10" WC
Gas Manifold 1-1/4" NP		

Welbilt reserves the right to make changes to the design or specifications without prior notice.