



# WFP16SC

## 4-Quart LiquiLock® Seal System Combination Bowl Cutter Mixer and Continuous-Feed Food Processor



### MAIN FEATURES


- 4-quart, virtually unbreakable, clear-view cutter mixer bowl
- LiquiLock® Seal System prevents leaks, splashes, and spills
- 2 HP\* commercial motor with thermal overload protection
- Heavy-duty, die-cast housing with solid base
- Large, easy-to-read control buttons
- PULSE feature fine-tunes food processing and breaks down heavy loads
- Over 20 processing options in one machine
- Unique batch bowl processing for optimal efficiency
- Shred, grate and slice directly in the batch bowl with the included disc stem
- Extra-large feed chute with small and large food pusher
- Continuous-feed chute for large-volume slicing and shredding
- Safety interlock system prevents unit from operating unless correctly assembled
- Limited Five-Year Motor and Two-Year Parts and Labor

### ELECTRICAL

Voltage: 120

Frequency: 60Hz

Amps: 6

Plug Type: 5-15 

Cord Length: 5 feet



### SALES FEATURES

Completely sealed for use with liquids, now you can use your WFP16SC combination bowl cutter mixer and continuous-feed food processor for more than dry food prep! High-impact, virtually unbreakable and scratch-resistant polycarbonate lets you see into the bowl. Lighter than metal, but built for tough use. Rugged, black polycarbonate hopper is scratch resistant. Durable see-through cover provides clear view while processing.



@waringcommercial

©2022 Waring Commercial  
314 Ella T. Grasso Avenue, Torrington, CT 06790  
Tel. 800-492-7464 • Fax 860-496-9008

[waringcommercialproducts.com](http://waringcommercialproducts.com)

4-Quart LiquiLock® Seal System Combination Bowl Cutter Mixer and Continuous-Feed Food Processor

WFP16SC



## 4-Quart LiquiLock® Seal System Combination Bowl Cutter Mixer and Continuous-Feed Food Processor WFP16SC

### PARTS AND ACCESSORIES (INCLUDED)

**WFP16S1**

Sealed LiquiLock® S-Blade (Patented)

**WFP16S2**

4 Qt. Cutter Mixer Bowl Sealed LiquiLock®

**WFP16S3A**

4 Qt. Cutter Mixer Bowl Lid Sealed LiquiLock®

**WFP16S4**

Continuous Feed Hopper

**WFP16S5**

Continuous Feed Hopper Lid

**WFP16S6**

Large Pusher for Hopper

**WFP16S7**

Small Pusher for Hopper

**WFP16S8**

Ejection Plate Slinger  
(component of continuous feed hopper)

**WFP16S9**

New Disc Stem for WFP16S10, WFP16S12A

**WFP16S10**

Adjustable Slicing Disc (Patented)

**WFP16S11**

Sealed Whipping Disc

**WFP16S12A**

Double-Sided Shredding Disc

### PARTS AND ACCESSORIES (OPTIONAL)

**WFP16S16**

Grating Disc

**WFP16S18**

Continuous Feed Hopper, Lid Assembly  
with Slinger & Dicing Assembly

**WFP16S19**

5/16" (8mm) Punch Tool for Dicing Grid

**WFP16S20**

3/8" (10mm) Punch Tool for Dicing Grid

**WFP16S21**

1/2" (12mm) Punch Tool for Dicing Grid

**WFP16S22**

5/32" (4mm) Julienne Disc

**WFP16S23**

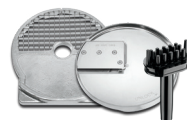
6.5mm Julienne Disc

**WFP16S24**

5/16" (8mm) Julienne Disc

**WFP16S25**

5/16" (8mm) Dicing Grid and Slicing Disc  
with Punch Tool for Dicing Grid

**WFP16S26**

3/8" (10mm) Dicing Grid and Slicing Disc  
with Punch Tool for Dicing Grid

**WFP16S27**

1/2" (12mm) Dicing Grid and Slicing Disc  
with Punch Tool for Dicing Grid

**WFP16S28**

Removable Gasket for 4-Qt.  
Cutter Mixer Bowl Lid WFP16S3A



@waringcommercial

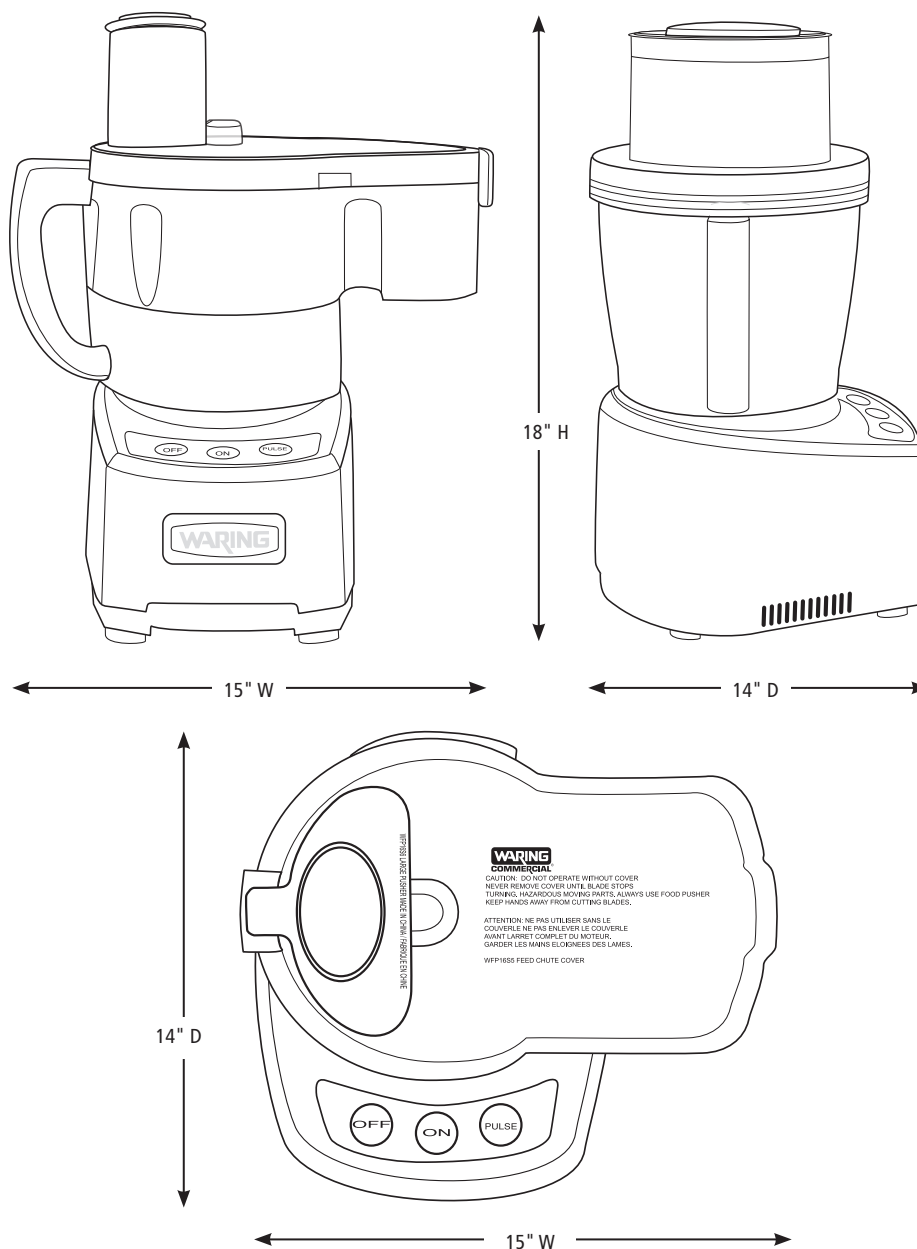
©2022 Waring Commercial  
314 Ella T. Grasso Avenue, Torrington, CT 06790  
Tel. 800-492-7464 • Fax 860-496-9008

[waringcommercialproducts.com](http://waringcommercialproducts.com)



## 4-Quart LiquiLock® Seal System Combination Bowl Cutter Mixer and Continuous-Feed Food Processor WFP16SC

### DIMENSIONS



Out of Box Weight: 22.8 lb.

ORDERING INFORMATION	#STD. PKG.	GIFTBOX WEIGHT	CUBIC FEET	BOX DIMENSIONS D X W X H	UPC	CASE PKG.	MC WEIGHT	MC DIMENSIONS D X W X H	MBC
WFP16SC – 4-Quart LiquiLock® Seal System Combination Bowl Cutter Mixer and Continuous-Feed Food Processor	1	35.5	4.13	15.25" x 21.625" x 21.625"	040072022494	1	35.5	22.125" x 15.75" x 22.375"	10040072022491



@waringcommercial

©2022 Waring Commercial  
314 Ella T. Grasso Avenue, Torrington, CT 06790  
Tel. 800-492-7464 • Fax 860-496-9008

[waringcommercialproducts.com](http://waringcommercialproducts.com)

21WC081519 / REV 11/21