



**T&S BRASS AND BRONZE WORKS, INC.**  
 2 Saddleback Cove / P.O. Box 1088  
 Travelers Rest, SC 29690

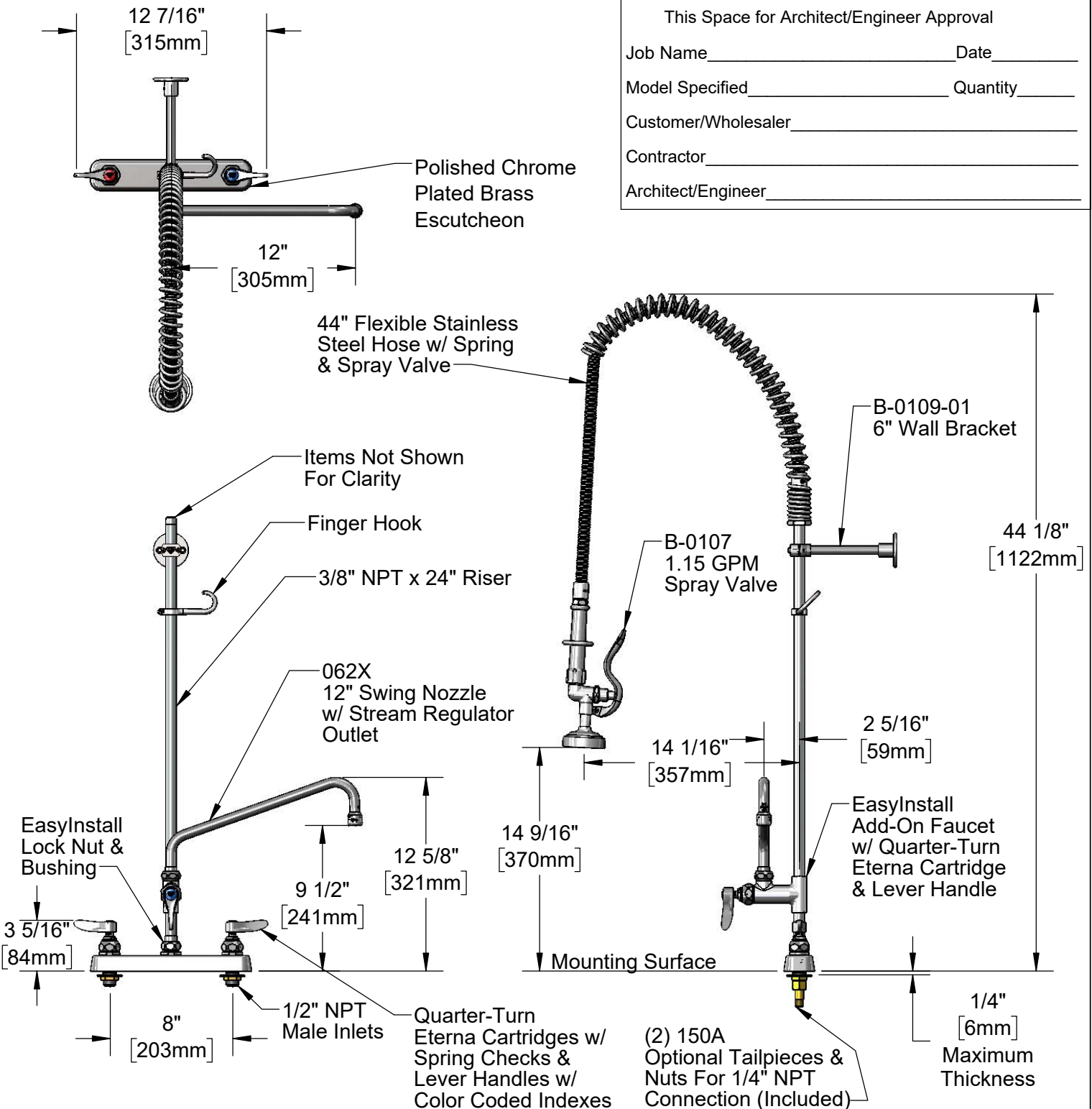
Model No.  
**B-5120-12-B**

Item No.

Travelers Rest, SC: 800-476-4103 • Simi Valley, CA: 800-423-0150 • Fax: 864-834-3518 • www.tsbrass.com

This Space for Architect/Engineer Approval

Job Name \_\_\_\_\_ Date \_\_\_\_\_  
 Model Specified \_\_\_\_\_ Quantity \_\_\_\_\_  
 Customer/Wholesaler \_\_\_\_\_  
 Contractor \_\_\_\_\_  
 Architect/Engineer \_\_\_\_\_



Product Specifications:

Pre-Rinse Unit: EasyInstall 8" Deck Mount Workboard Faucet, Quarter-Turn Eterna Cartridges w/ Spring Checks, Lever Handles, Add-On Faucet, 12" Swing Nozzle, 44" Flexible Stainless Steel Hose, 1.15 GPM Spray Valve, 6" Wall Bracket & 1/2" NPT Male Inlets

Product Compliance:

ASME A112.18.1 / CSA B125.1  
 NSF 61 - Section 9  
 NSF 372 (Low Lead Content)  
 2019 DOE PRSV - Class II



# T&S BRASS AND BRONZE WORKS, INC.

2 Saddleback Cove / P.O. Box 1088  
Travelers Rest, SC 29690

Model No.

**B-5120-12-B**

Item No.

Travelers Rest, SC: 800-476-4103 • Simi Valley, CA: 800-423-0150 • Fax: 864-834-3518 • www.tsbrass.com

		ITEM NO.	SALES NO.	DESCRIPTION
		1	B-0107	1.15 GPM Spray Valve
2	010476-45	#27 Washer		
3	000907-45	Spray Valve Hold Down Ring		
4	002987-40	Grip Handle		
5	001014-45	Washer, B-0100 Hose Barrel		
6	B-0044-H2A	44" Stainless Steel Flex Hose, Less Handle		
7	000888-45	EasyInstall Overhead Spring		
8	000821-40	Spring Body		
9	B-0109-01	6" Wall Bracket		
10	004R	Finger Hook		
11	000372-40	3/8" NPT x 24" Riser		
12	062X	12" Swing Nozzle w/ Stream Regulator Outlet		
13	B-0156	Add-On Faucet w/ 12" Swing Nozzle		
14	B-0155-LNEZ	EasyInstall Add-On Faucet, Less Nozzle		
15	EZ-K	EasyInstall Kit: Nut, Bushing, O-ring & Lock Washer		
16	001065-45	O-Ring		
17	014200-45	Star Washer, Anti-Rotation		
18	018506-19NS	Blue Button Index, Press-in		
19	000925-45	Lab Handle Screw		
20	001638-45NS	Lever Handle (New Style)		
21	012442-40NS	Quarter-Turn Eterna Cartridge, LTC w/ Spring Check		
22	002711-40NS	Quarter-Turn Eterna Cartridge, LTC w/ Spring Check, Lever Handle, Index & Screw		
23	019376-40	Escutcheon Lock Nut		
24	019612-40	8" c/c Brass Escutcheon		
25	000999-45	Brass Lock Washer		
26	002954-45	Shank Lock Nut		
27	150A	1/4" NPT Tailpiece & Nut		
28	002712-40NS	Quarter-Turn Eterna Cartridge, RTC w/ Spring Check, Lever Handle, Index & Screw		
29	012443-40NS	Quarter-Turn Eterna Cartridge, RTC w/ Spring Check		
30	001193-19NS	Red Button Index, Press-in		
31	B-PT	Full Flow Stream Regulator, 55/64-27		

**Product Specifications:**  
 Pre-Rinse Unit: EasyInstall 8" Deck Mount Workboard Faucet, Quarter-Turn Eterna Cartridges w/ Spring Checks, Lever Handles, Add-On Faucet, 12" Swing Nozzle, 44" Flexible Stainless Steel Hose, 1.15 GPM Spray Valve, 6" Wall Bracket & 1/2" NPT Male Inlets

**Product Compliance:**  
 ASME A112.18.1 / CSA B125.1  
 NSF 61 - Section 9  
 NSF 372 (Low Lead Content)  
 2019 DOE PRSV - Class II