

READ AND SAVE THESE INSTRUCTIONS

Impulse!TM
S E R I E S

OPERATING MANUAL

SELF-SERVICE COUNTERTOP UNITS

>> MODELS CSC3223 / CSC3223.4254 / CSC3223.4817

**SCC P/N
99425**



Note: See P/N 20-16813 For Field Service Parts List



888 E. Porter Road · Muskegon, MI 49441 Phone: 231.798.8888 Fax: 231.798.4960 www.structuralconcepts.com

TABLE OF CONTENTS

OVERVIEW AND WARNINGS	3
INSTALLATION	4
START-UP AND OPERATION	5
MAINTENANCE FUNDAMENTALS: SHELF ASSEMBLY REMOVAL / DECKING REMOVAL	6
MAINTENANCE FUNDAMENTALS: STD. DOOR MECHANISM / RYOBI DOOR MECHANISM	7
LIGHT FIXTURES - LED	8
SERIAL LABEL LOCATION & INFORMATION LISTED / TECH INFO & SERVICE.....	9
TROUBLESHOOTING / CLEANING SCHEDULE	10
ILLUSTRATED PARTS BREAKDOWN (STANDARD CASE ONLY)	11
ILLUSTRATED PARTS BREAKDOWN (GENERAL)	12
FIELD SERVICE PARTS LIST	13
TECHNICAL SERVICE CONTACT INFORMATION & WARRANTY INFORMATION	14

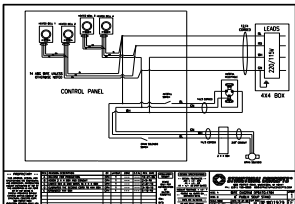
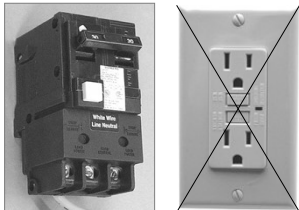
OVERVIEW AND WARNINGS

OVERVIEW

- The Structural Concepts non-refrigerated service cases are designed to merchandise unpackaged bakery products at ambient temperatures.
- These cases should be installed and operated according to the following instructions to ensure proper performance.



**ATTENTION
CONTRACTORS**



- This unit is designed for the display of products in ambient store conditions where temperatures and humidity are maintained at a maximum of 75° F and 55% relative humidity.

COMPLIANCE

- Performance issues when in violation of applicable NEC, federal, state and local electrical codes are not covered by warranty.

COMPLIANCE

This equipment **MUST** be installed in compliance with all applicable NEC, federal, state and local electrical codes.

CAUTION! LAMP REPLACEMENT GUIDELINES
LED lamps reflect specific size, shape and overall design. Any replacements must meet factory specifications.

WARNING

Risk of electric shock.
Disconnect ALL ELECTRICAL SOURCES before servicing.

CAUTION! GFCI BREAKER USE REQUIREMENT
If N.E.C. (National Electric Code) or your local code requires GFCI (Ground Fault Circuit Interrupter) protection, you **MUST** use a GFCI breaker in lieu of a GFCI receptacle.

CAUTION! POWER CORD AND PLUG MAINTENANCE
Risk of electric shock. If cord or plug becomes damaged, replace only with cord and plug of same type.

WIRING DIAGRAM FORMAT & LOCATION

- Each case has its own wiring diagram folded & in its own packet.
- Wiring diagram placement may vary; it may be placed near ballast box, field wiring box, raceway cover, or other related location.

WARNING: This product can expose you to chemicals, including Urethane (Ethyl Carbamate), which are known to the state of California to cause cancer and birth defects or other reproductive harm. For more information go to P65Warnings.ca.gov.

INSTALLATION

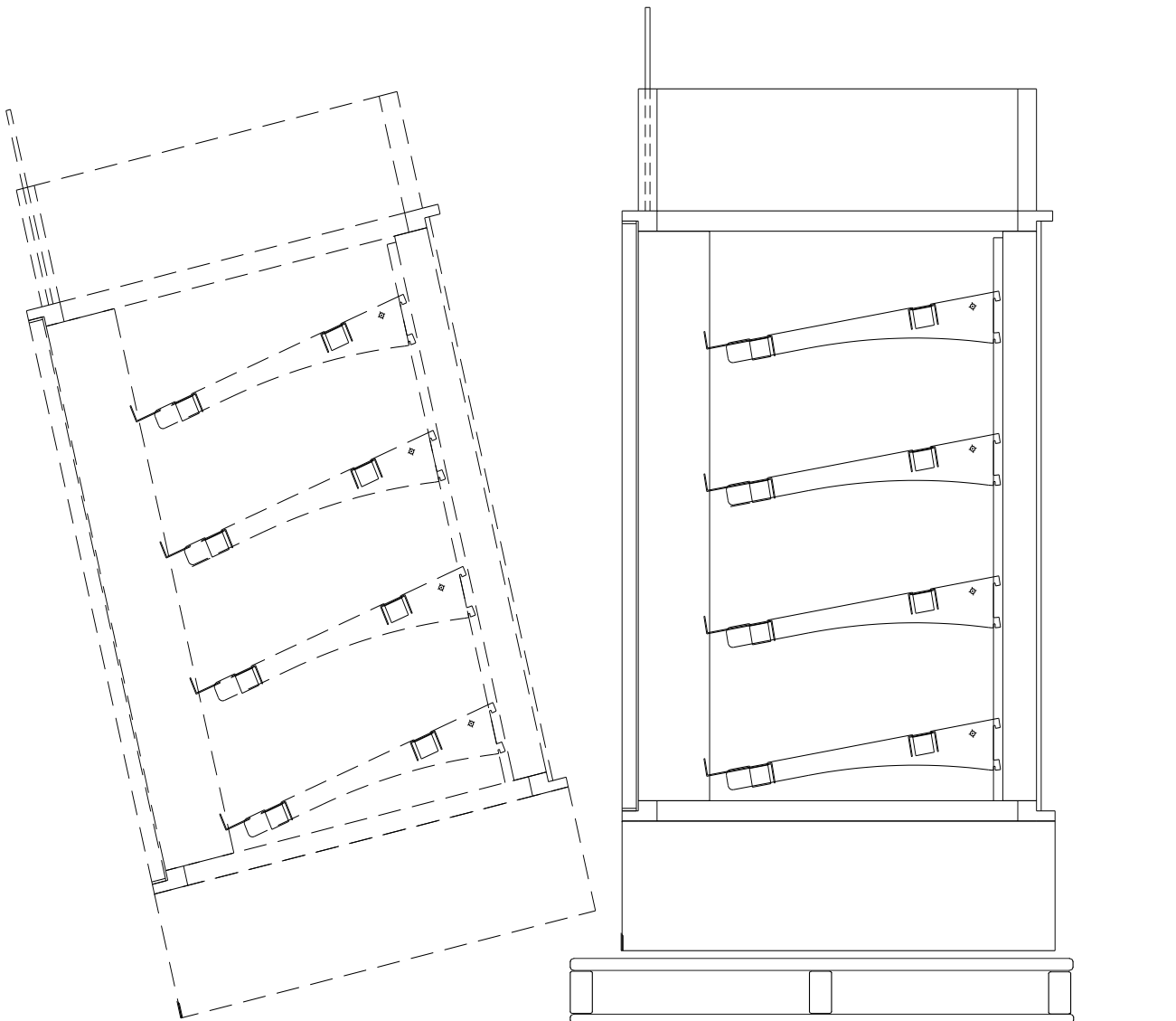
1. Remove Unit From Skid

- Position the unit near a suitable electrical outlet.
- Caution: Case must always remain supported or center of gravity will allow case to fall.
- Slide unit to rear of skid and tip backward off skid.

2. Position and Level Units

For your safety, equipment is furnished with a properly grounded cord connector. Do not attempt to defeat the grounded connector.

Lift unit with suitable prying bar and blocking. Use care to lift in manner to minimize damage to case. Rotate leveler to obtain proper height to stabilize and level the unit.



← Carefully Slide Unit
Out From Skid

START-UP AND OPERATION

For your safety, equipment is furnished with a properly grounded cord connector. Do not attempt to defeat the grounded connector.

1. Set-up Counter Top Unit

- Remove case from skid and place on counter in the position at which the case will reside.
- **Note:** The following steps must be completed before this display case may be put in service.
- 1. *After case is in position, apply a steady bead of silicone around the base and counter top.*
- 2. *Allow 24 hours for the silicone to dry before using the case.*
- Electrical 120V stub up connections are provided in the light switch box.

2. Merchandiser Start-Up

- Do not use an extension cord with this appliance.
- Do not operate this equipment with a damaged cord, plug or outlet.
- Insure the power switch is off.
- Plug cord into a certified 120V electrical outlet with ground.

3. LED Lights Only

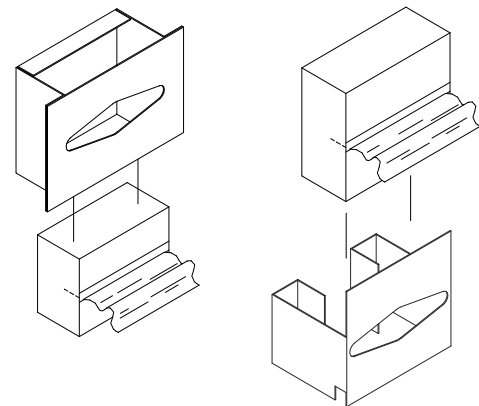
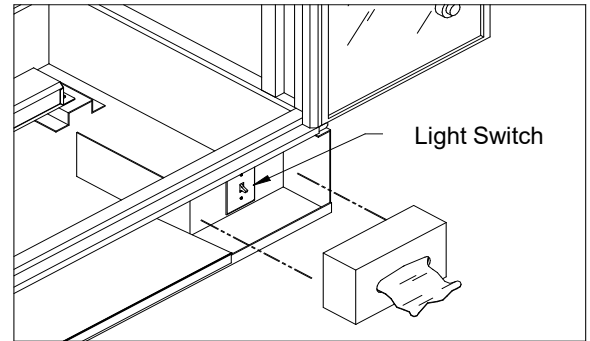
- Lights will come on when case is plugged in and light switch is turned on.

4. Tissue Dispenser

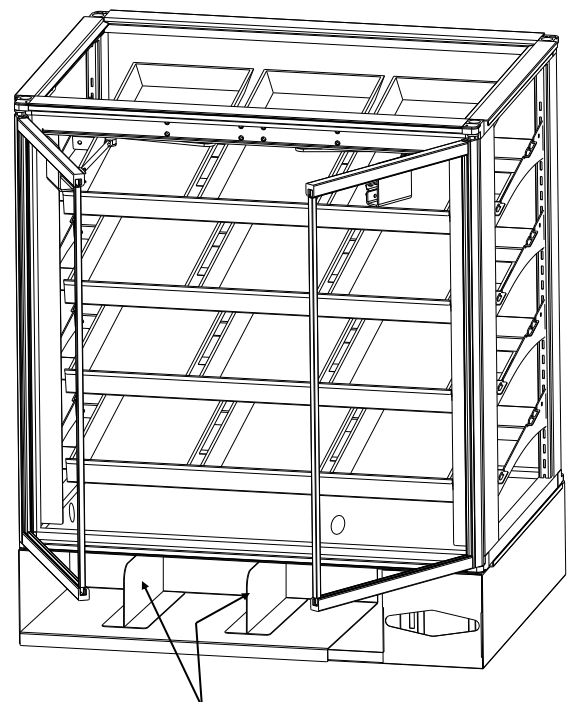
- Remove tissue dispenser.
- Place a tissue box into the dispenser as shown.

5. Adjustable Front Storage Area Dividers (Optional)

- Dividers are held in place with magnetic tape strips.
- Dividers may be adjusted to reflect varying widths.
- Dividers may be entirely removed from case.



— Tissue Dispensers —



Adjustable Front Storage Dividers
(Retained With Magnetic Tape)

MAINTENANCE FUNDAMENTALS: SHELF ASSEMBLY REMOVAL / DECKING REMOVAL

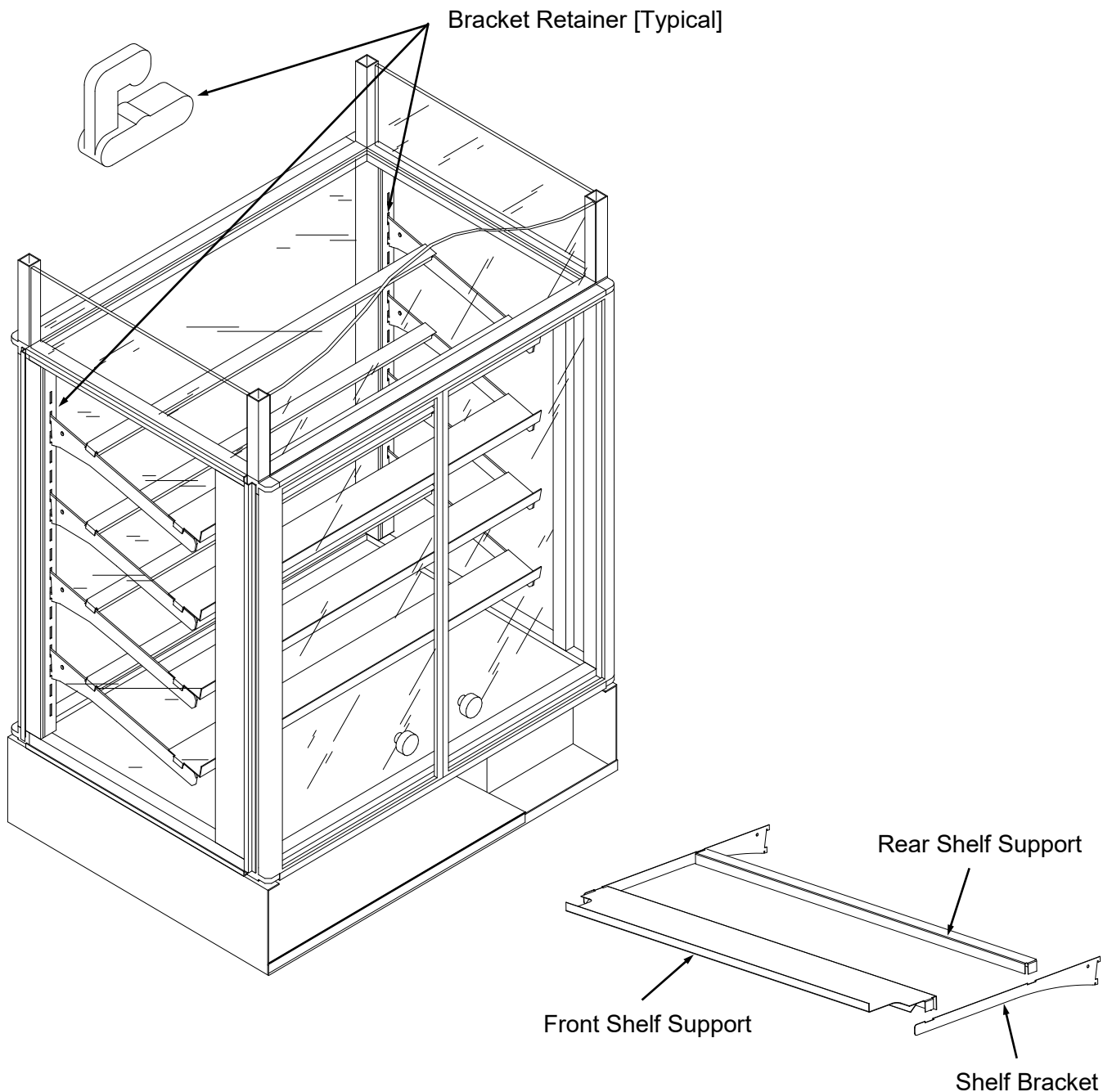
1. Shelf Assembly Removal

- Shelves can be removed for repositioning, removal (for individual merchandising requirements) and cleaning.
- Slide the front shelf support back rotate up and lift straight up to separate from brackets.
- Slide the rear shelf support back rotate up and lift straight up to separate from brackets.

- Remove brackets. Note: It may be necessary to remove the nylon shipping bracket retainers. Pliers will be required to accomplish this task.

2. Decking Removal

- Remove lower shelf assembly.
- Remove interior deck by pushing up from underneath in the bag storage area.
- See illustration at lower right.



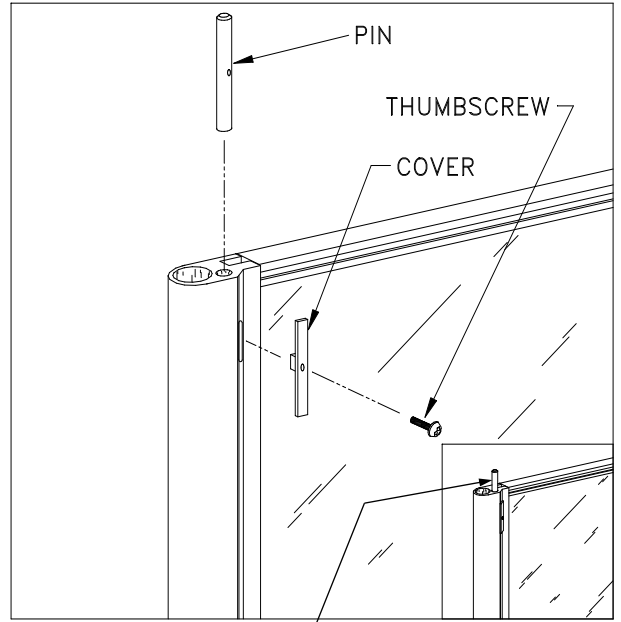
1. Door "Hold Open" Feature

To reposition the shelving or restock the shelves, it is first helpful to use the door 'hold open' feature.

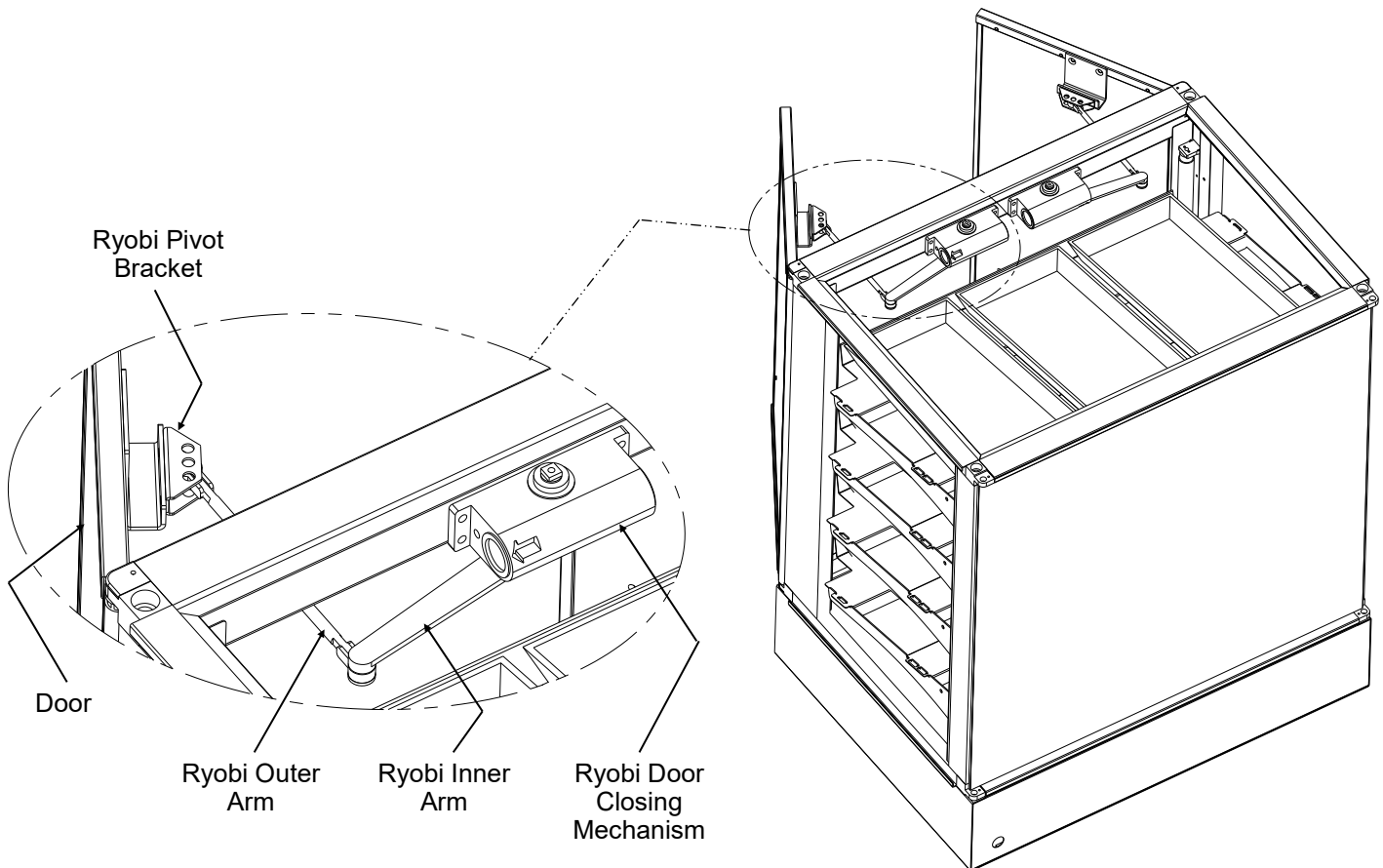
- Open the door all the way (See light fixture).
 - **Caution damage will result if pin is not lowered before attempting to close the doors.**
 - Inside the unit, at the top of each door hinge, is the pin slide cover.
- Slide the pin cover up until the pin extends approximately 1/2 inch above the door hinge.
- Release the door assembly allowing the pin to rest on the outer door frame.
- To close, fully open the door and retract the pin into the hinge and allow the door to close.

2. Ryobi Door Closing Mechanism (Optional)

- Certain models (such as CDR4817) use the Ryobi door closing mechanism.
- When opened approximately 90°, door 'catches' and stays open.
- When pressure is applied to close door, 'catch' releases and door closes normally.



PIN EXTENSION



LED Style Light Fixtures

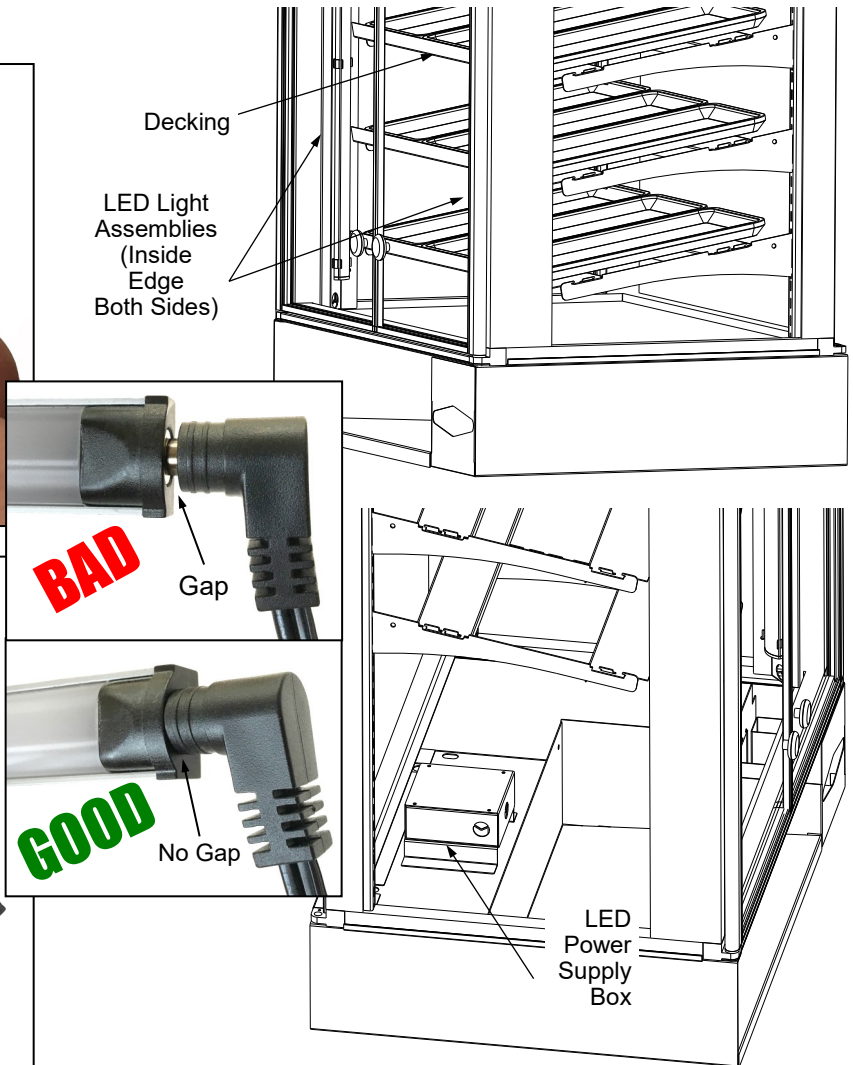
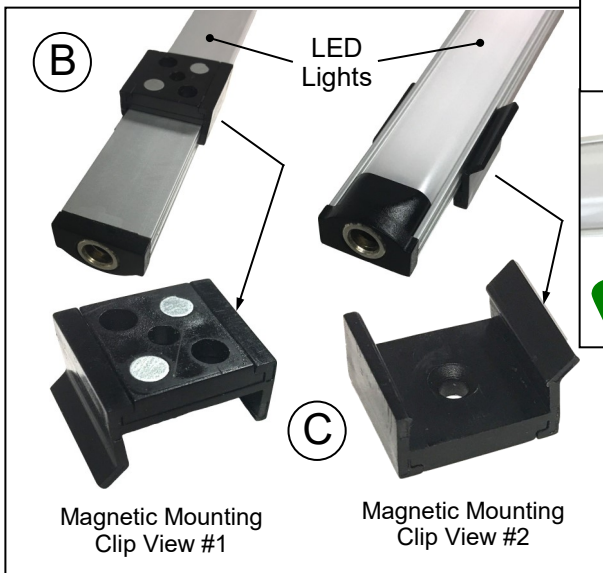
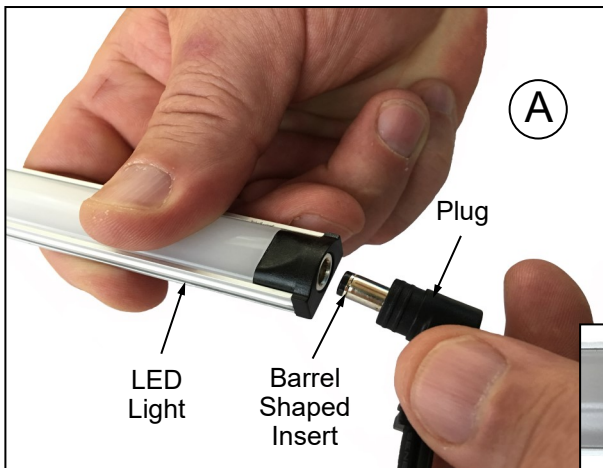
Removal of Faulty LED Lights:

- LED lights rarely require change-out.
- Contact Structural Concepts' Technical Service Department for replacement LED lights.
- Turn off LED light switch.
- To remove faulty LED light, follow these steps:
 - A. Disconnect plug from LED light.
 - B. Using both hands, grasp LED light assembly (with its magnetic mounting clips). Pull downward and off its shelf (or header).
 - C. Remove magnetic mounting clips from LED light by pressing against flange part of clip with thumb.

>> **Note:** Mounting clips MAY be riveted to shelf or header. In such instances, simply remove LED light from mounting clips by pressing against flange part of clips with thumb.

Replacement of LED lights:

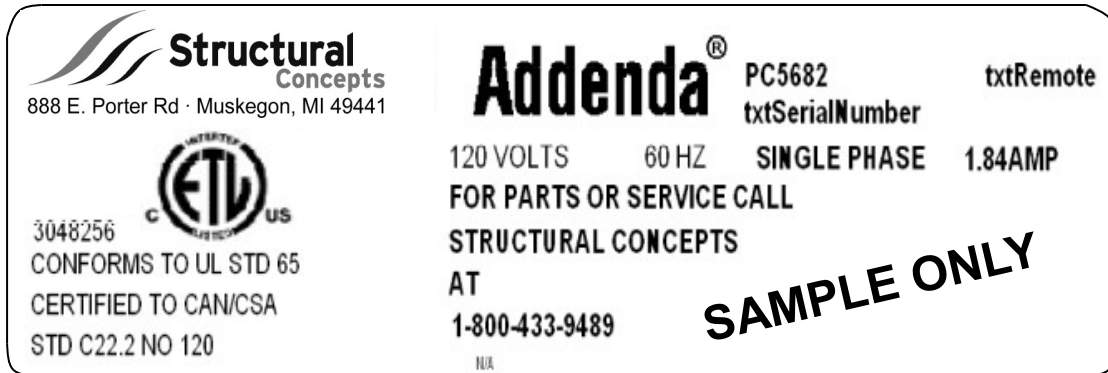
- Attach magnetic mounting clips onto LED light.
 - Adjust magnetic mounting clips so they are equally spaced on LED light.
 - Reattach LED light assembly to its shelf/header.
 - Position properly in shelf/header.
- >> **Note:** If mounting clips are riveted to shelf (or header), attach by placing LED in base of clip and then snapping into clip at FLANGE SIDE.
- Press plug's barrel-shaped insert all the way into LED light.
 - **Important:** If plug is not inserted ALL THE WAY IN the LED light's orifice, the light may not energize. See **"BAD"** vs. **"GOOD"** insertion illustrations below-right.
 - Turn LED light switch back on.



View of case with decking removed to access

Serial Label Location & Information Listed / Technical Information & Service

- Serial labels are located near the electrical access on your case.
- Serial labels contain electrical, temperature & refrigeration information, as well as regulatory standards to which the case conforms.
- For additional technical information and service, see the *TECHNICAL SERVICE* page in this manual for instructions on contacting Structural Concepts' Technical Service Department.
- See images below for samples of both refrigerated and non-refrigerated serial labels.



----- Sample Serial Label For Non-Refrigerated Case -----

TROUBLESHOOTING / CLEANING SCHEDULE

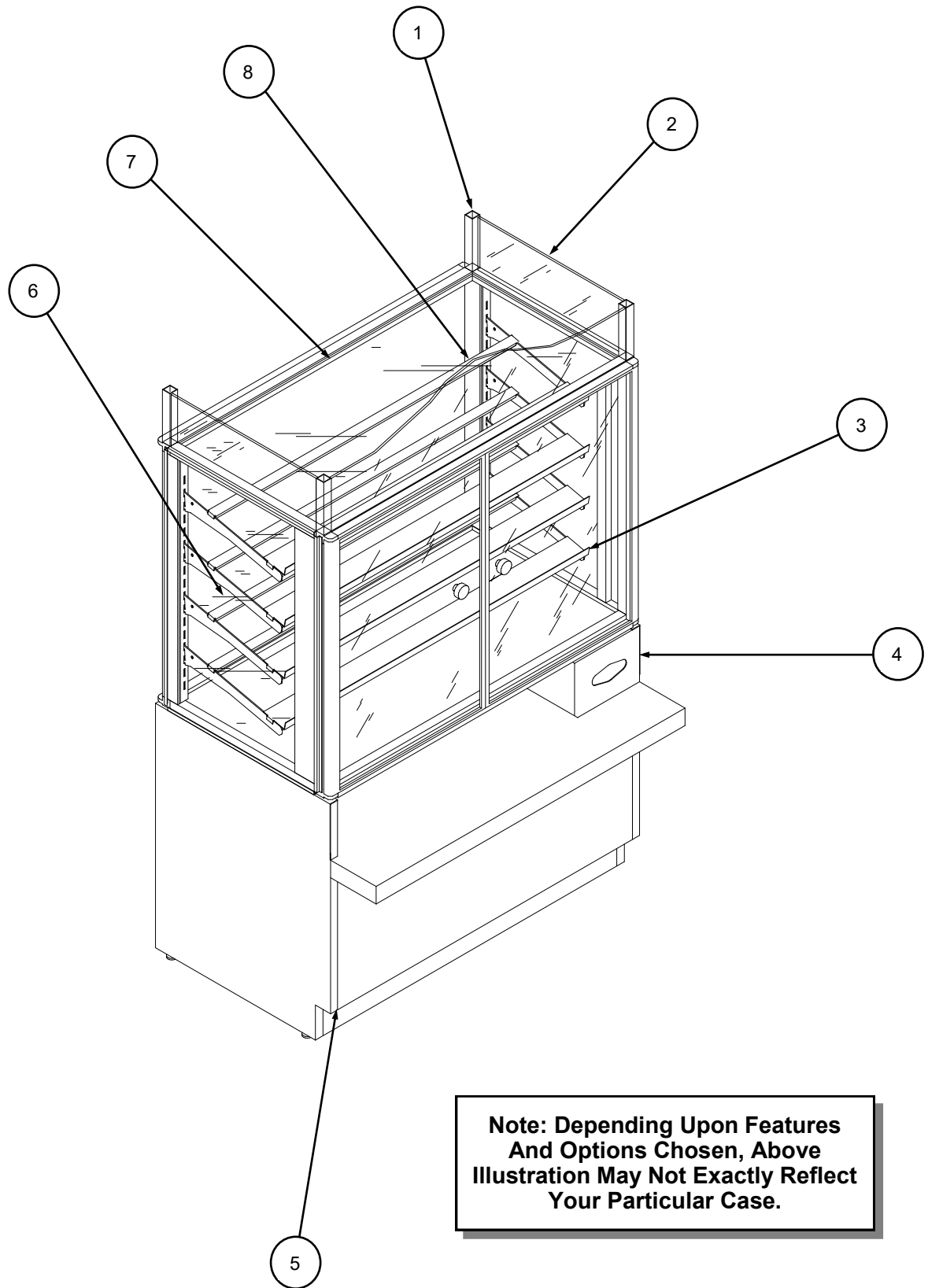
Troubleshooting

Issue	Resolution
Case Lights Not Working	Check LED lights for proper installation and connection. See LIGHT FIXTURES - LED section in manual for illustrations.
	Check for burned out LED lights.
System is not Operating	Confirm the utility power is on.
	Check the circuit breaker box for tripped circuits.

Cleaning Schedule

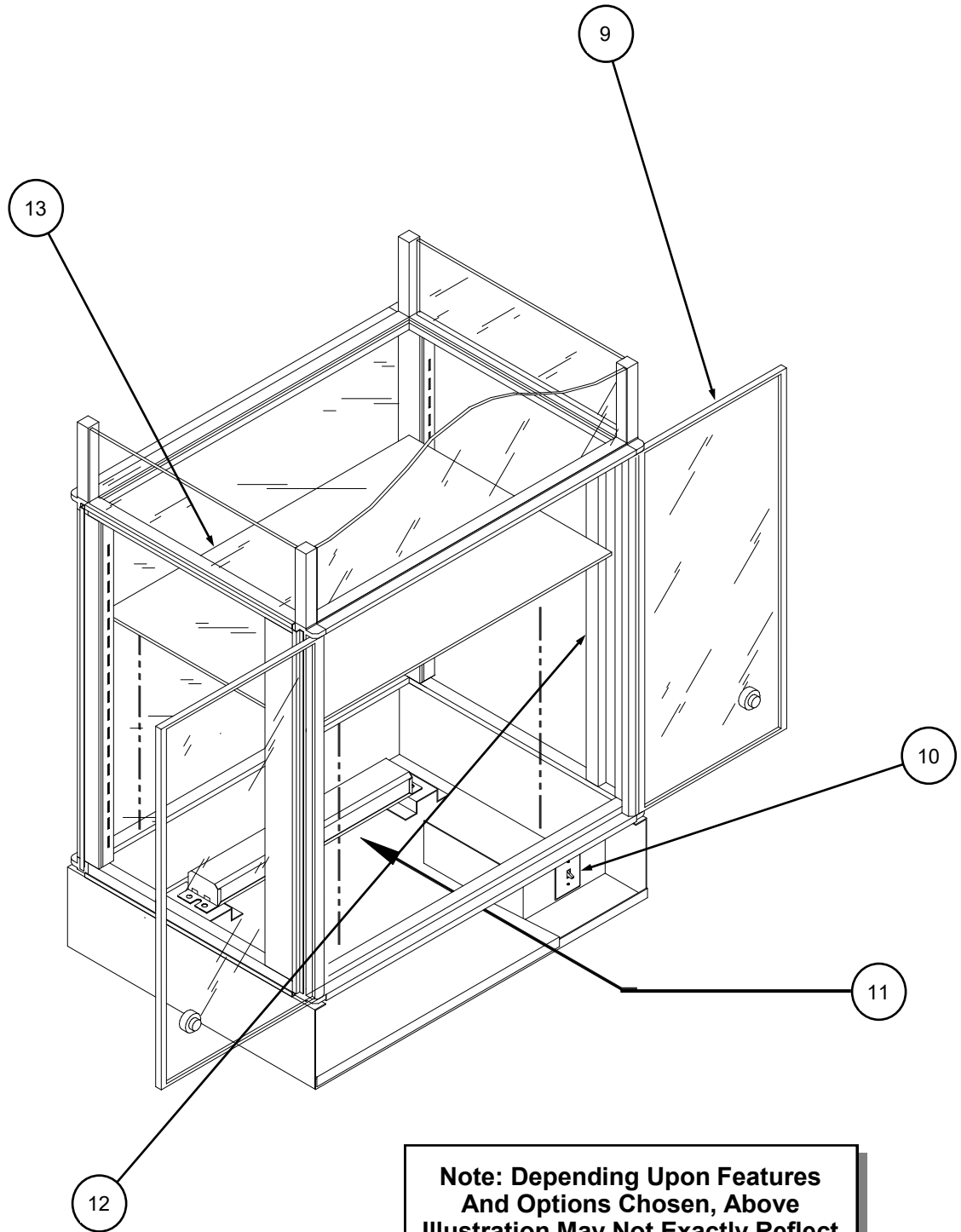
Cleaning	Daily	Weekly	Monthly	Task
Clean Case Exterior	X			Clean all case exterior surfaces with a household or commercial glass cleaner and a soft cloth.
Clean Case Interior	X			Clean the interior case deck and shelving surfaces with a warm water and mild soap solution.

ILLUSTRATED PARTS BREAKDOWN (STANDARD CASE ONLY)



**Note: Depending Upon Features
And Options Chosen, Above
Illustration May Not Exactly Reflect
Your Particular Case.**

ILLUSTRATED PARTS BREAKDOWN (GENERAL)

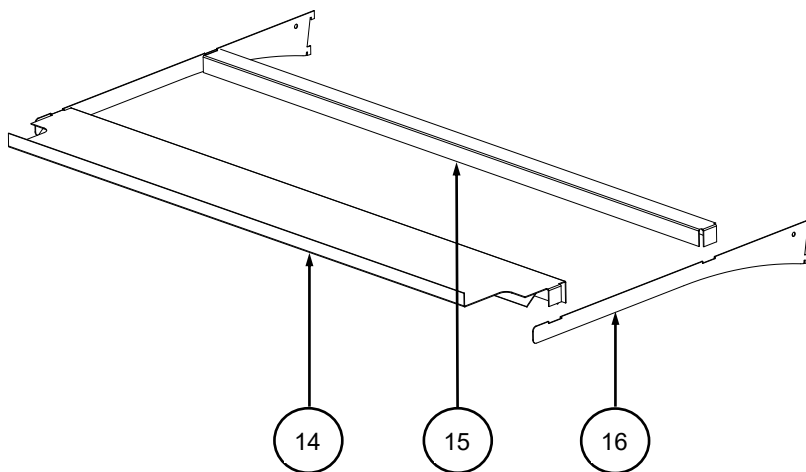


**Note: Depending Upon Features
And Options Chosen, Above
Illustration May Not Exactly Reflect
Your Particular Case.**

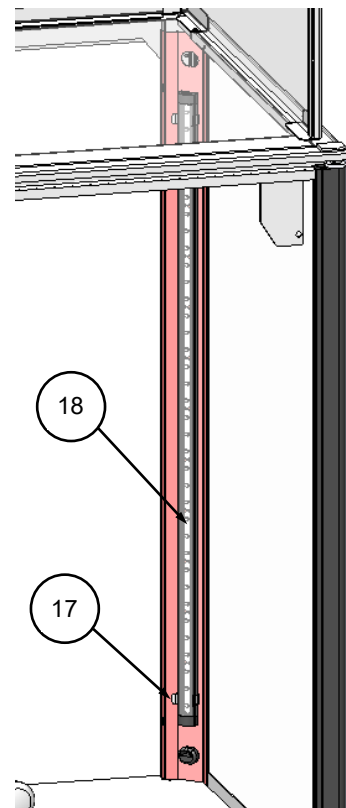
PARTS LIST

1	Sign Upright Tube	11	LED Driver
2	Acrylic Sign Side	12	Deck
3	Shelf Assembly	13	Shelf Support Front
4	Tissue Holder	14	Shelf Support Rear
5	Front Panel or Storage Door	15	Shelf Bracket
6	Acrylic End Glass	16	LED Light
7	Top Glass	17	Light clip
8	Acrylic Sign		
9	Door Assembly		
10	Single Pole Switch		

Shelf Assembly



Note: Depending Upon Features And Options Chosen, Above Illustrations May Not Exactly Reflect Your Particular Case.



Light Assembly

STRUCTURAL CONCEPTS TECHNICAL SERVICE CONTACT INFORMATION & LIMITED WARRANTY

TECH SERVICE/WARRANTY CONTACT INFO: 1 (800) 433-9490 / EXTENSION 1

DAYS/HOURS AVAILABLE:
MONDAY - FRIDAY (CLOSED HOLIDAYS)
8:00 a.m. TO 5:00 p.m. EST

YOU MUST HAVE THE FOLLOWING INFO AVAILABLE BEFORE CONTACTING STRUCTURAL CONCEPTS:

SERIAL NO. / MODEL NO. / STORE NO. / STORE
ADDRESS / DETAILS (PHOTOS, LEAK LOCATIONS,
DAMAGE, STORE'S AMBIENT CONDITIONS, ETC.)

LIMITED WARRANTY

Overview: All sales by Structural Concepts Corporation (hereafter referred to as "SCC") are subject to the following limited warranty. "Goods" refers to the product or products being sold by SCC.

Warranty Scope: Warranty is for equipment sold in the United States, Canada, Mexico and Puerto Rico. Equipment sold elsewhere may carry modified warranties.

Warranty; Remedies; Limitations: The limit of liability of SCC toward the exchange cost of the original compressor motor (and/or any other components) is one year parts and labor. If any Goods are found to be of faulty material or workmanship within one year of the original F.O.B. (free on board) unit shipment, SCC will, at its option (after inspection by an authorized representative), replace or pay the reasonable cost of replacement of the faulty Goods. If warranty claim is not made within this one year time period, SCC is not bound to warrant Goods. A motor-compressor (and/or any other components) replaced during the warranty shall not exceed manufacturer's current established wholesaler's exchange price. If replacement motor-compressor (and/or other components) is available via storage facility, parts truck, etc., SCC mandates that readily accessible replacement components be used toward repair of Goods; in such instances, SCC will replace such equipment (at its own expense) after confirmation of its use/placement on defective unit. SCC shall not be charged an additional fee, up-charge or expense for such replacement Goods. If SCC is unable to repair or replace the defective Goods, SCC shall issue a credit to the Purchaser for full or partial purchase price, as SCC shall determine. The replacement or payment in the manner described above shall be the sole and exclusive remedy to Purchaser for a breach of this warranty. If any Goods are defective or fail to conform to this warranty, SCC will furnish instructions for their disposition. No Goods shall be returned to SCC without its prior consent.

SCC's liability for any defect in the Goods shall not exceed the purchase price of the Goods. SCC SHALL HAVE NO LIABILITY TO PURCHASER FOR CONSEQUENTIAL DAMAGES OF ANY KIND WHATSOEVER, INCLUDING, BUT NOT LIMITED TO, PERSONAL INJURY, PROPERTY DAMAGE, LOST PROFITS, OR OTHER ECONOMIC INJURY DUE TO ANY DEFECT IN THE GOODS OR ANY BREACH OF SCC, SCC SHALL NOT BE LIABLE TO THE PURCHASER IN TORT FOR ANY NEGLIGENT DESIGN OR MANUFACTURE OF THE GOODS, OR FOR THE OMISSION OF ANY WARNING THEREFROM.

SCC shall have no obligation or liability under this warranty for claims arising from any other party's (including Purchaser's) negligence or misuse of the Goods or environmental conditions. This warranty does not apply to any claim or damage arising from or caused by improper storage, handling, installation, maintenance, or from fire, flood, accidents, structural defects, building settlement or movement, acts of God, or other causes beyond SCC's control.

Except as expressly stated herein, SCC makes no warranty, express, implied, statutory or otherwise as to any parts or goods not manufactured by SCC. SCC shall warrant such parts or Goods only (I) against such defects, (II) for such periods of time, and (III) with such remedies, as are expressly warranted by the manufacturer of such parts of Goods. Notwithstanding the foregoing, any warranty with respect to such parts of Goods and any remedies available as a result of a breach thereof shall be subject to all of the procedures, limitations, and exclusions set forth herein.

THE WARRANTIES HEREIN ARE IN LIEU OF ALL WARRANTIES, EXPRESS, IMPLIED, STATUTORY, OR OTHERWISE. IN PARTICULAR, SCC MAKES NO WARRANTY OF MERCHANTABILITY OR FITNESS FOR A PARTICULAR PURPOSE.

No representative, agent or dealer of SCC has authority to modify, expand, or extend this Warranty, to waive any of the limitations or exclusions, or to make any different or additional warranties with respect to Goods.

Period of Limitations: No claim, suit or other proceeding may be brought by Purchaser for any breach of the foregoing warranty or this Agreement by SCC or in any way arising out of this Agreement or relating to the Goods after one year from the date of the breach. In the interpretation of this limitation on action for a breach by SCC, it is expressly agreed that there are no warranties of future performance of the goods that would extend that period of limitation herein contained for bringing an action.

Indemnifications: Purchaser agrees to indemnify, hold harmless, and defend SCC if so requested, from any and all liabilities, as defined herein, suffered, or incurred by SCC as a result of, or in connection with, any act, omission, or use of the Goods by Purchaser, its employees or customers, or any breach of this Agreement by Purchaser. Liabilities shall include all costs, claims, damages, judgments, and expenses (including reasonable attorney fees and costs).

Remedies of SCC: SCC's rights and remedies shall be cumulative and may be exercised from time to time. In a proceeding or action relating to the breach of this Agreement by Purchaser, Purchaser shall reimburse SCC for reasonable costs and attorney's fees incurred by SCC. No waiver by SCC of any breach of Purchaser shall be effective unless in writing nor operate as a waiver of any other breach of the same term thereafter. SCC shall not lose any right because it has not exercised it in the past.

Applicable Law. This Agreement is made in Michigan; it is governed by and interpreted according to Michigan law. Any lawsuit arising out of this Agreement or the Goods may be handled by a federal or state court whose district includes Muskegon County, Michigan, and Purchaser consents that such court shall have personal jurisdiction over Purchaser.

LED Lighting Components Within Lighting System: Supermarket: 5-year LED warranty from date of shipment. **Foodservice:** 2-year LED warranty from date of shipment. After one year, warranty does not include labor or other costs incurred for diagnosing, repairing, removing, installing, shipping, servicing, or handling of either defective part or replacement parts. Remedy of repair or provision of a replacement part without charge shall be the exclusive remedy for any warranty claim. The replacement LED and/or power supply assumes the unused portion of warranty remaining on unit(s). A 90-day warranty will apply for any LED sold as a service part. Warranty claim must include serial and model number of unit as well as date code on defective LED lighting component(s). Manufacturer may request return of defective part(s) at customer's expense to initiate claim.

Glass Material: Glass (UV-bonded glass, glass sneeze guards, glass enclosures, glass held in place via posts, etc.) is only warranted to FIRST POINT OF DELIVERY.

Miscellaneous: If any provision of this Agreement is found to be invalid or unenforceable under any law, the provision shall be ineffective to that extent and for the duration of the illegality, but the remaining provisions shall be unaffected. Purchaser shall not assign any of its rights nor delegate any of these obligations under this Agreement without prior written consent of SCC. This Agreement shall be binding upon and inure to the benefit of SCC and Purchaser and each of their legal representatives, successors and assignees. SCC warrants its products to be free of defects in materials and workmanship under normal use and service for a period of one (1) year from the date of delivery.

This warranty is extended only to the original purchaser for use of the Goods. It does not cover normal wear parts such as plastic tongs, tong holders, tong cables, bag holders, or acrylic dividers.

General Conditions: All service labor and/or parts charges are subject to approval by SCC. Contact Customer Service Dept. in writing, by phone, fax or email.

All claims must contain the following information: (1) model & serial code number of equipment; (2) the date and place of installation; (3) the name and address of the agency which performed the installation; (4) the date of the equipment failure; and (5) a complete description of the equipment failure and all circumstances relating to that failure.

Once the claim has been determined to be a true warranty claim by SCC's Customer Service Department, the following procedure will be taken: (1) replacement parts will be sent at no charge from SCC on a freight prepaid basis; (2) reimbursement for service labor will be paid if the following conditions have been met - (a) prior approval of service agency was awarded from the Customer Service Department; and (b) an itemized statement of all labor charges incurred is received by the Customer Service Department. The cost of the service labor reimbursement will be based on straight time rates and reasonable time for the repair of the defect.

If problems occur with any compressor, notify SCC's Customer Service Department immediately. Any attempt to repair or alter the unit without prior consent from the Customer Service Department will render any warranty claim null and void. This warranty and protection plan does not apply to any condensing unit or any part thereof which has been subject to accident, negligence, misuse, or abuse, or which has not been operated in accordance with the manufacturer's recommendations or if the serial number of the unit has been altered, defaced, or removed.

One Year Limit of Liability: After SCC's one-year parts and labor warranty on the original F.O.B. (free on board) unit has expired, SCC is not liable for either the equipment or labor costs of repairing or replacing the motor compressor, nor any other components that were included in the original F.O.B. (free on board) unit.