



BEVERAGE-AIR

Project: _____
Item: _____
Location: _____
Approved: _____

AIA#

SIS#

FOOD PREPARATION TABLES

SPED72HC Sandwich Prep Table with Drawers
Hydrocarbon Series

MODEL:
SPED72HC-18-6

SPED72HC SANDWICH PREP: STANDARD TOP



5 Year Parts/Labor Warranty Available

7 Year Compressor Warranty

CABINET CONSTRUCTION

- Stainless steel front, sides, top, drawers and grille (galvanized back & bottom)
- Interior liner is made of corrosion resistant aluminum
- Full electronic control
- Removable hoods made of matching stainless steel
- Airflow assures that product in open containers is kept below 41°F and above freezing
- Snap-in magnetic gaskets for positive drawer seal
- 10" Wide cutting board constructed of white polyethylene plastic
- Cutting board removable for cleaning
- Eighteen (18) 1/6 4" deep pans constructed of polycarbonate plastic
- Pans furnished are 4" deep constructed of polycarbonate plastic
- Stainless steel drawer frames supported on telescoping drawer slides
- Drawer slides include locking mechanism that prevents drawers from being inadvertently pulled off cabinet
- Top and bottom drawers accommodate 6" deep pans
- 6" Casters, 2 with brakes standard

OPTIONS & ACCESSORIES

- 3 Year parts/labor standard, additional 2 year warranty available
- Stainless steel back
- Stainless steel interior
- Clear lid
- Overshelves (single or double)
- Crumb catcher
- Richlite cutting board
- Night cover
- Pan supports
- Pan support crossbar
- Locking divider
- 6" Legs or 3" casters
- Low profile casters
- Remote option* (see note on back page)

REFRIGERATION SYSTEM

- Uses environmentally friendly, energy efficient R290 refrigerant, and meets all regulatory requirements for CARB, SNAP, DOE & more
- Adaptive defrost
- Epoxy coated evaporator coil
- Enhanced airflow maintains temperatures between 36° - 38°F



Please verify qualifying units by visiting:
www.energystar.gov/cfs

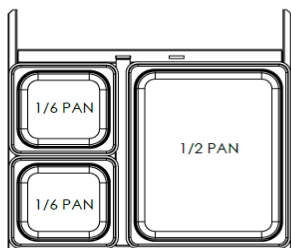
3779 Champion Blvd., Winston-Salem, NC 27105
1-888-845-9800 Fax: 1-336-245-6453
Beverage-Air.com Sales@bevair.com



BEVERAGE-AIR®

| MODEL | SPED72HC-18-6 |
|----------------------------------|---------------------------------------|
| EXTERNAL DIMENSIONAL DATA | |
| Width Overall | 72" |
| Depth Overall | 32" |
| Height Overall with Casters | 45 1/8" |
| No. of Drawers | 6 |
| Depth with Drawer Open 90° | 47 1/8" |
| Drawer Openings | 19 1/2" x 11 1/4" 19 1/2" x 7 1/2" |
| Width, Cutting Board | 10" |
| INTERNAL DIMENSIONAL DATA | |
| NET Capacity (cubic ft.) | 20.02 |
| Internal Width Overall (in) | 68" |
| Internal Depth Overall (in) | 15 3/8" |
| Internal Height Overall (in) | 23" |
| No. of Pans | 18 |
| ELECTRICAL DATA | |
| Full Load Amperes | 5.4 |
| REFRIGERATION DATA | |
| Horsepower | 1/3 |
| Capacity (BTU/Hr) | 1549 |
| Heat Rejection (BTU/Hr) | 2323.5 |
| Charge (lbs/grams) | 0.2095/95 |
| SHIPPING DATA | |
| Gross Weight - Crated | 484 lbs |
| Height - Crated | 43" |
| Width - Crated | 74" |
| Depth - Crated | 33" |

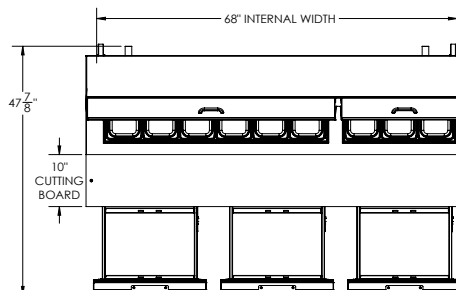
*NOTE: Remote units are field wired and come with 6" legs.
Refrigerant must be specified at time of order.



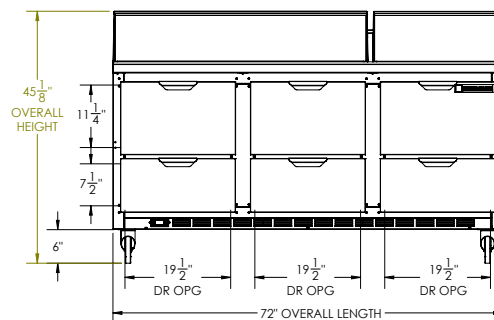
Food Preparation Table with Drawers: Standard Top Model: SPED72HC-18-6

Model Views

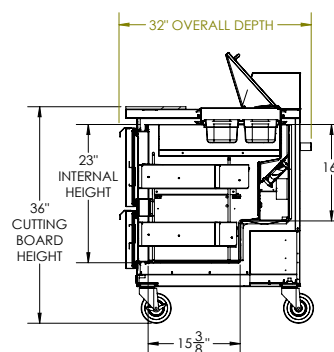
Required Clearance: 3" bottom & 2" rear



PLAN VIEW



ELEVATION VIEW



SIDE VIEW



ELECTRICAL CONNECTION

115/60/1
NEMA 5-15P

Unit pre-wired at factory
and include 8' long cord
and plug set.

3779 Champion Blvd., Winston-Salem, NC 27105 1-888-845-9800 Fax: 1-336-245-6453 Beverage-Air.com Sales@bevoir.com

an Ali Group Company



The Spirit of Excellence