



UNDERBAR TRASH MODULE

MODEL NUMBERS - TSF12BTB, TS12TRA



TSF12BTB shown



TS12TRA shown

JOB	
AREA	
ITEM NO.	
MODEL NO.	

MODELS
TSF12BTB
TS12TRA

KEY PRODUCT FEATURES AND BENEFITS

- Perlick trash housings are designed to fit the standard slim container up to 30" high
- Unit are designed to attach to adjoining equipment and can have an accessory leg panel on one side
- Perlick's door version is designed for easy removal of the trash can without removing the door
- Designed to integrate into your design and keep a clean aesthetic

Quick Features:

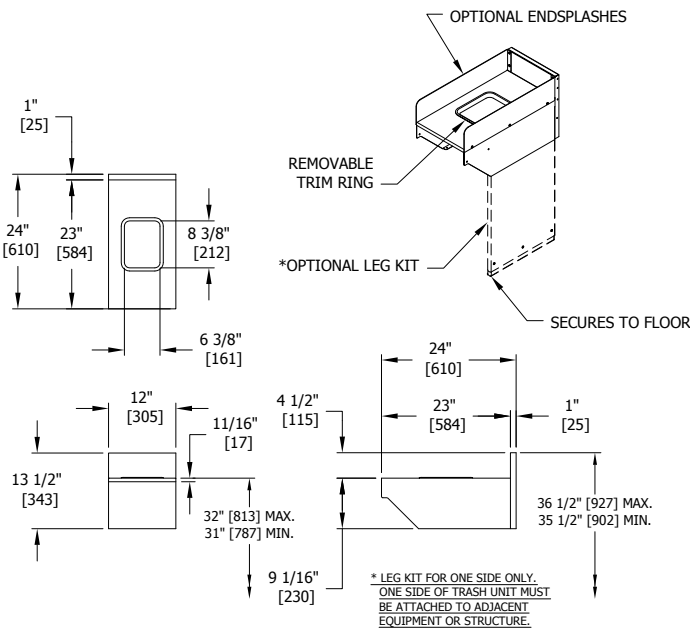
- Effectively hides trash containers to keep your bar appearance clean
- Stainless steel for corrosion resistance
- Designed for easy cleaning

Perlick® UNDERBAR TRASH MODULE

MODEL NOS.	TSF12BTB	TS12TRA
DIMENSIONS: EXTERIOR (mm)	Length	12" (305)
	Width	24" (610)
	Ship Weight (lbs)	25 (11)
GENERAL PARTS	General Parts	Stainless steel
	Backsplash	6" high (4" high optional)
	Wastebasket Accessories	Wastebasket (Grey Slim Jim 11"L x 20"W x 30"H - 57265)
ACCESSORIES	TSF12BTB	End panel (BRG-PL), End splash (BRG-ES)
	TS12TRA	Panel leg (TRA-PL)

Note: Requires support by adjacent underbar equipment or accessory end panel and leg kit.

TSF12BTB



TS12TRA

