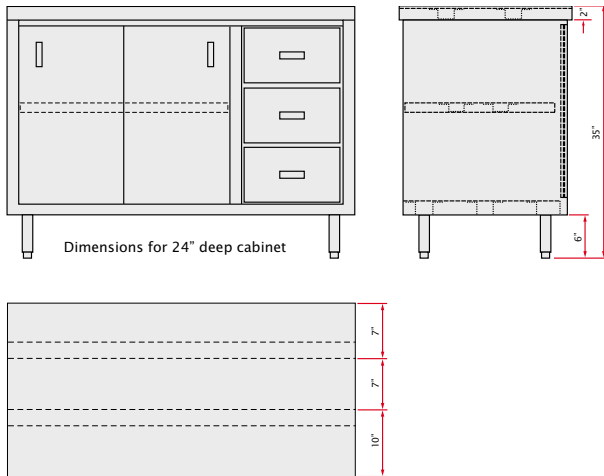


Stainless Steel Cabinet Series



Model CO3048



Dimensions for 24" deep cabinet

Flat Top Open Cabinet

- All Heavy Duty Series Stainless Steel Construction
- Fully Welded and Assembled
- Reinforced Frame and H-Style Hat Channels
- Adjustable Stainless Steel Intermediate Shelf
- Adjustable Stainless Steel heavy duty Leg Assembly
- Optional Drawers come complete with Locks
- Full extension drawer slides

Model No. with open front	Weight lbs.	Model No. with open front & 3 drawers	Weight lbs.	Size D" x L" x H"
24" DEEP FLAT TOP CABINETS				
CO2436	110	CO2436D	120	24 x 36 x 35
CO2442	120	CO2442D	130	24 x 42 x 35
CO2448	130	CO2448D	140	24 x 48 x 35
CO2460	155	CO2460D	165	24 x 60 x 35
CO2472	190	CO2472D	200	24 x 72 x 35
CO2484	220	CO2484D	230	24 x 84 x 35
CO2496	250	CO2496D	260	24 x 96 x 35
30" DEEP FLAT TOP CABINETS				
CO3036	120	CO3036D	130	30 x 36 x 35
CO3042	135	CO3042D	145	30 x 42 x 35
CO3048	150	CO3048D	160	30 x 48 x 35
CO3060	180	CO3060D	190	30 x 60 x 35
CO3072	210	CO3072D	220	30 x 72 x 35
CO3084	240	CO3084D	250	30 x 84 x 35
CO3096	270	CO3096D	280	30 x 96 x 35

Sizes nominal, specifications subject to change without notice.



Model CO3048D