



PROJECT NAME: \_\_\_\_\_  
 ITEM NUMBER: \_\_\_\_\_  
 QUANTITY: \_\_\_\_\_  
 LENGTH: \_\_\_\_\_

**INFINITY™ Support**

- 1/2" Clear Tempered Glass
- Please contact factory for additional options

**MOUNTING OPTIONS:**

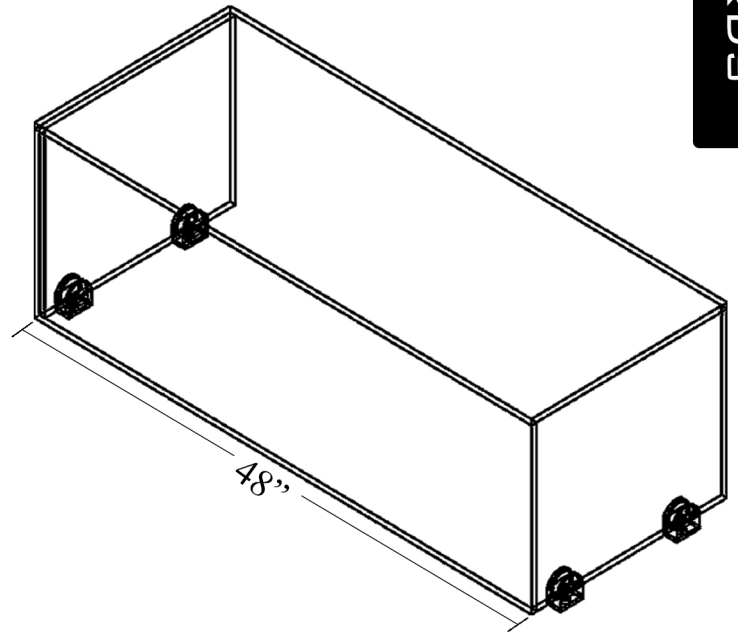
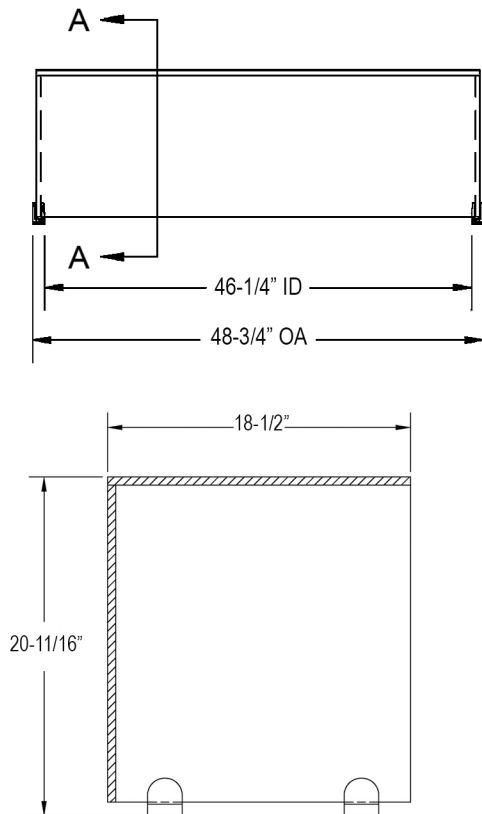
- 640-Z Above counter Surface Mount (Standard)
- Standard mount glass clamp as shown in render.  
 Refer to mounting cut sheet or factory for more information

**END PANELS:**

As required by NSF/ANSI 2 standards, all food shields will be quoted with side panels unless customer requests otherwise. Standards available upon request.



**UV BONDED GUARDS**



Specifications for reference only and may be changed without notice. All orders require approved shop drawings prior to release to production. Products are drawn and built to meet NSF Standard 2. It is the responsibility of the customer to ensure product meets local health board standards.

