

TECHNICAL DATA

Dimensions

Exterior Dimensions (WxDxH)	54" x 32.25" x 82.5"
Interior Dimensions (WxDxH)	49.5" x 27" x 60.25"
Net Volume (cu. ft.)	48 cu. ft.
Gross Weight	536 lbs
Packaging Dimensions (WxDxH)	55" x 34" x 84.5"

Cooling

Temperature Range	33° - 40° F
Refrigerant	R290
Maximum Ambient Temperature Rating	90° F
Defrosting	Automatic
Temperature Display	Yes
Temperature Controller	Digital
H/P	1/2

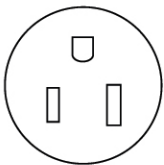
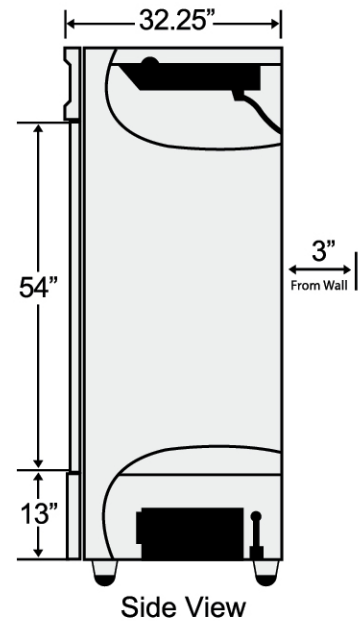
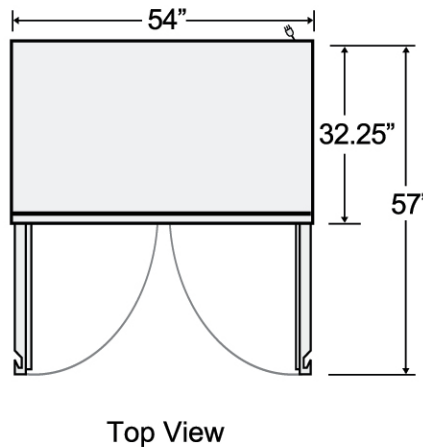
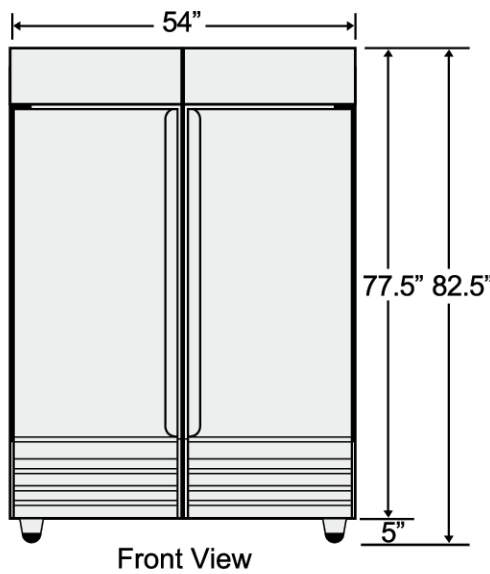
Construction

Exterior Material	430 series stainless steel
Interior Material	304 series stainless steel
Insulation Material	Foamed in place polyurethane
Shelf Material	Plastic coated steel
Shelf Load Capacity	120 lbs

Electrical

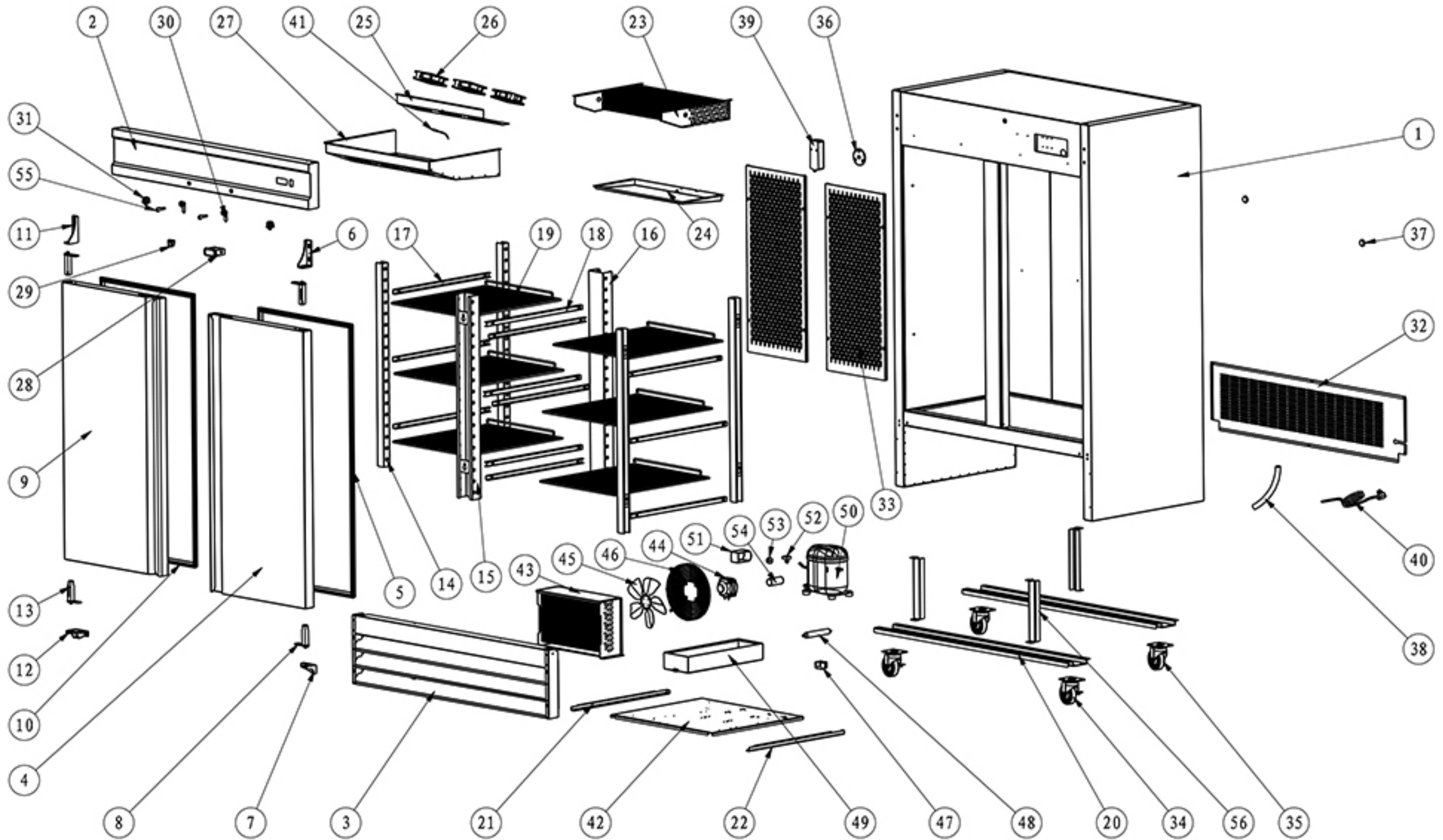
Voltage	120
Amps	8.6
Hz	60
Phase	1

PLAN VIEW



NEMA 5-15

STR-47



NO.	Part Name	Factory Part NO.	QTY
1	CABINET		1
2	CONTROL PANEL		1
3	FRONT GRILL		1
4	RIGHT DOOR		1
5	GASKET	16401631328	1
6	UPPER RIGHT HINGE	12517020005	1
7	BOTTOM RIGHT HINGE	12517020007	1
8	SPRING HINGE BOARD	12517010001	2
9	LEFT DOOR		1
10	GASKET	16401631328	1
11	UPPER LEFT HINGE	12517020004	1
12	LEFT BOTTOM HINGE	12517020006	1
13	SPRING HINGE BOARD	12517010001	2
14	BRACKETS		4
15	MIDDLE BRACKETS		1
16	BACK BRACKETS		1
17	LEFT SHELF TRACK		6
18	RIGHT SHELF TRACK		6
19	SHELF	12502013304	6
20	LEG SUPPORTER		2
21	LEFT TRACK FOR ASSEMBLING PANEL		1
22	RIGHT TRACK FOR ASSEMBLING PANEL		1
23	EVAPORATOR	17404100601	1
24	INNER DRAIN PAN		1
25	FAN MOTOR INSTALLATION PANEL		1
26	EVAPORATOR FAN MOTOR	1003001114715	3
27	EVAPORATOR COVER		1
28	THERMOSTAT	17505180005	1
29	POWER SWITCH	17749211297	1
30	LOCK	12546100952	2
31	DOOR SWITCH	17749020004	2
32	BACK GRILL		1
33	COMPONENTS FOR BACK SHELF		2
34	4" CASTOR WITH BRAKE	12533070420	2
35	4" CASTOR	12533040420	2
36	DRAIN PLUG		1
37	FOAMING HOLE COVER	16352020002	2
38	DRAIN HOSE	15818180020	1

39	LIGHT COMPONENTS	17740410133	1
40	POWER CORD	17664640052	1
41	TEMPERATURE SENSOR OF CABINET INSIDE	17649490016	1
42	COMPRESSOR UNIT INSTALLATION BOARD		1
43	CONDENSER	17304100262	1
44	CONDENSER FAN MOTOR	22752520008	1
45	CONDENSER FAN MOTOR BLADE	16381738142	1
46	CONDENSER FAN COVER	22726010004	1
47	FILTER FIXER	16369690257	1
48	FILTER	17111250198	1
49	OUTER DRAIN PAN	16316130007	1
50	COMPRESSOR	17202163125	1
51	SPLICE BOX		1
52	STARTER		1
53	OVERLOAD PROTECTOR		1
54	START CAPACITOR		1
55	KEY		2
56	CABINET SUPPORTER		3