



# MAESTRO SERIES

MODULAR  
ICE MACHINE

## IM-2000-RC/RH

### REMOTE AIR COOLED

#### KEY FEATURES:

- Up to 1,980 lbs production capacity (70F/50F, 24 Hours)
- 304 stainless-steel exterior (durable & rust-resistant)
- Simple diagnostic panel to assist service & maintenance
- Cleaning switch for auto cleaning cycle
- Magnetic & cleanable condenser air filter
- Adjustable flush time to reduce scale & cleaning cost
- ABS antimicrobial interior to reduce slime & cleaning cost
- Water distributor tube & water sump removed w/o tools
- Heavy duty water curtain, pins & hangers for easy removal
- Hinged front doors for easy access
- Split front panel requires less space to access food zone
- Side panel screws easily removed from front of machine
- Louvers on both sides & top for optimal ventilation
- Improved evaporator section to reduce airborne bacteria
- R-410A refrigerant

#### STANDARD WARRANTY:

- Ice Maker: 3-Year Parts & Labor
- Evaporator: 5-Year Parts & Labor
- Compressor: 5-Year Parts & 3-Year Labor

#### CERTIFICATIONS



IM-2000-RH shown with IB-085-48

#### Recommended Ice Storage Bin:

(48" wide)



IB-085-48 (816lbs)

#### Recommended Water Filtration:

IcePro 2500 (replacement cartridge: IcePro 2500R)



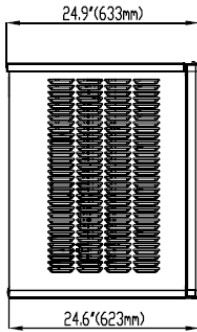
Extended Warranty Program when you install and register IcePro 2500 water filtration with IM-2000-RC/RH. For more information, visit [www.icetroamerica.com/registration](http://www.icetroamerica.com/registration).

# IM-2000-RC/RH

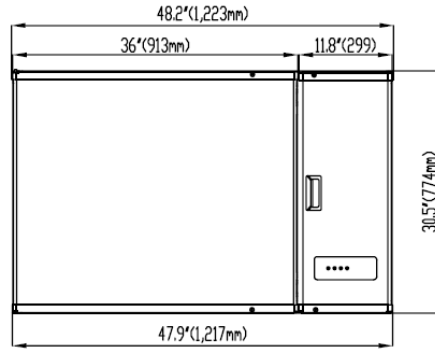
# MAESTRO SERIES (MODULAR ICE MACHINE)

## PLAN VIEW

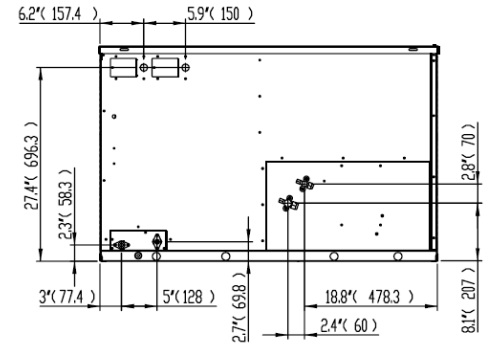
IM-2000-RC/RH (MACHINE HEAD)



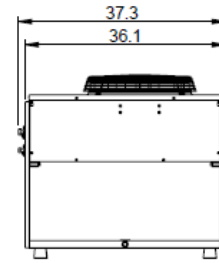
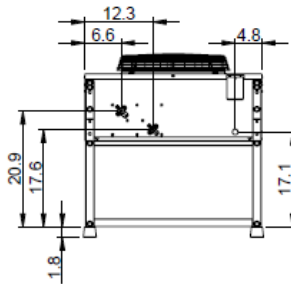
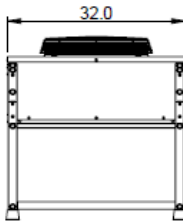
SIDE



FRONT



BACK



IRC-2000  
(Remote Condenser)

| MODEL                | DIMENSION | WIDTH | DEPTH | HEIGHT | WEIGHT        |                    |
|----------------------|-----------|-------|-------|--------|---------------|--------------------|
| IM-2000-RC/RH        | Inch      | 48"   | 24.9" | 30.4"  | 322 lbs (Net) | 366 lbs (Shipping) |
| IRC-2000 (CONDENSER) | Inch      | 37.3  | 32.0  | 27.1   | 143 lbs (Net) | 195 lbs (Shipping) |

※ Remote condenser receives its power from ice machine, and A 50' power cable is included with each refrigeration line-set.

## SPECIFICATIONS

| Model          | Ice Shape                 | Ice Production per 24 hrs |                         | Gal / 100 lbs ice | kWh / 100 lbs ice | Electrical (V/Hz/ph) | BTU per Hour                  | Minimum Circuit Breaker (A) |
|----------------|---------------------------|---------------------------|-------------------------|-------------------|-------------------|----------------------|-------------------------------|-----------------------------|
|                |                           | 70 °F Air / 50 °F Water   | 90 °F Air / 70 °F Water |                   |                   |                      |                               |                             |
| <b>IM-2000</b> | RC: Cube<br>RH: Half Cube | 1,980 lbs                 | 1,730 lbs               | 14.0              | 4.04              | 208 ~ 230 / 60 / 1   | 18,300 (AVG)<br>21,045 (peak) | 30                          |

※ Electrical plug is not included with machine head, and dedicated hardwired connection is required.

| OPERATING LIMITS               | MIN               | MAX               |
|--------------------------------|-------------------|-------------------|
| AMBIENT TEMP RANGE (HEAD)      | 50 °F             | 100 °F            |
| AMBIENT TEMP RANGE (CONDENSER) | -5 °F             | 117 °F            |
| WATER TEMP RANGE               | 50 °F             | 90 °F             |
| WATER PRESSURE                 | 20 psi (1.38 bar) | 80 psi (5.52 bar) |

**ICE SHAPE:** Cube & Half Cube



Cube

$7\frac{7}{8}'' \times 7\frac{7}{8}'' \times 7\frac{7}{8}''$



Half Cube

$1\frac{1}{8}'' \times 3\frac{3}{8}'' \times 7\frac{7}{8}''$

If you love your Ice...  
It's time to love your Ice Machine!



\* Design and specifications are subject to change without prior notice.