

Product Specifications

Refrigerated Self-Service Case 24"D - Type II



MODEL SHOWN: B4524-E3

- ☐ B3424-E3
- ☐ B4524-E3
- ☐ B6624-E3

Lengths include end panels
34-1/2"L x 24-1/4"D x 82-3/8"H
45-1/2"L x 24-1/4"D x 82-3/8"H
66-3/8"L x 24-1/4"D x 82-3/8"H

STANDARD FEATURES

- Breeze~E (Type-II) w/ EnergyWise s/c refrigeration
- Blue Fin coated coil
- Compressor air lower front intake and upper front discharge.
Front panel cannot be blocked
- Condensate pan (self-contained refrigeration only)
- Flat header
- Integrated average product temperature of 40°F or less
- LED 4000K top light(s)
- One piece formed ABS plastic tub (n/a B8824)
- One year parts & labor; 5 year compressor warranty
- Removable deck pans provide complete access to evaporator coil & refrigeration connections
- Shelving removable and adjustable on 1" centers
- Solid back panel, black

Features	Standard	Options
EXTERIOR COLOR	<input type="checkbox"/> Black	
INTERIOR COLOR	<input type="checkbox"/> Black	
LWR PERFORATED FRNT PANEL	<input type="checkbox"/> Painted - Black	
BASE	<input type="checkbox"/> Casters	
END PANEL LEFT	<input type="checkbox"/> Full end panel w/mirror interior (metal edge matches interior color)	
END PANEL RIGHT	<input type="checkbox"/> Full end panel w/mirror interior (metal edge matches interior color)	
EXTERIOR BACK PANEL	<input type="checkbox"/> Solid back panel, black	
UPPER FRONT PANEL	<input type="checkbox"/> Flat front panel	
SHELVING	<input type="checkbox"/> Metal shelves, lighted (LED 4000K)	
ELECTRICAL CONNECT	<input type="checkbox"/> 6' power cord (base exit)	
REFRIGERATION	<input type="checkbox"/> Breeze~E (Type-II) w/ EnergyWise s/c refrigeration	
MISCELLANEOUS		<input type="checkbox"/> Second year parts & labor warranty (excludes compressor)

Product Specifications

Intended Environment: Type II - Designed to operate in ambient conditions of 80°F and 60% relative humidity unless noted otherwise in system information below.

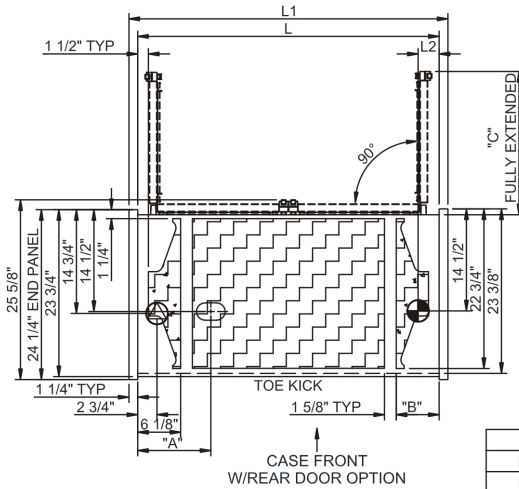
Zone **Intended Product To Be Displayed**

1 Packaged refrigerated products

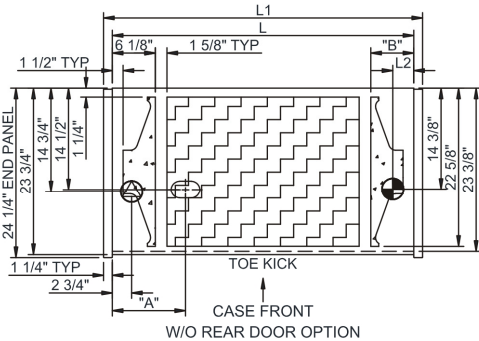
Warmest Avg Prod Temp ° F

40

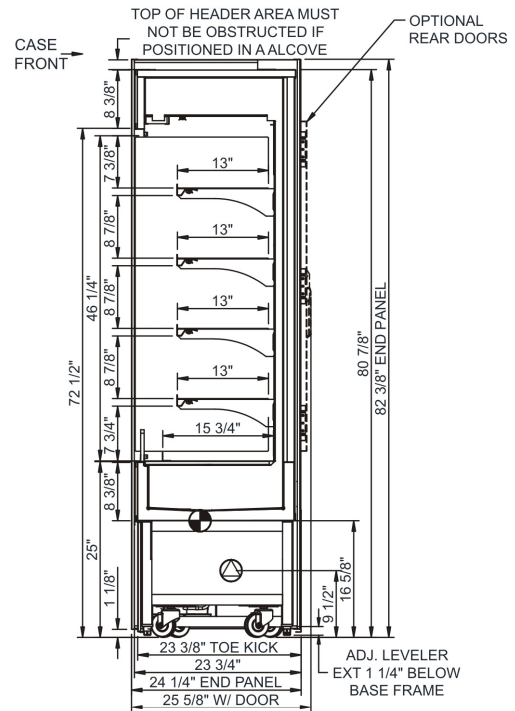
PLAN VIEW



	"A"	"B"	"C"
B3424	7"	N/A	29 1/2"
B4524	7"	6 1/8"	20 3/8"
B6624	10 3/8"	6 1/8"	N.A.



SIDE VIEW



NOTE: ALL DIMENSIONS APPROXIMATE

- ELECTRICAL JUNCTION BOX (SUPPLIED WITH 6" LEADS OR POWER CORD).
- LOCATION OF DRAIN TUBE FOR REMOTE REF. ONLY (SUPPLIED WITH 3/4" OR 1 1/2" PVC TUBE).
- REFRIGERATION LINE CONNECTION.

- REMOTE FLOOR SINK & UTILITIES ACCESS AREA.
- SELF-CONTAINED CASE SERVICE ACCESS AREA.
- DRY CASE SERVICE ACCESS AREA.

Model Technical Specifications

Model	L"	L1"	L2"	System Circuit Volts			Phs	Freq	Amps ***	Watts	Wires	NEMA Plug	SST	Conv. Rack BTUH	Para. Rack BTUH	Est Wt
B3424-E3	N/A	34.50	3.13	Self-Contained	Circuit #1	110-120	1	60	15.64	1,198	2+G	5-20P or L5-20P	N/A	N/A	N/A	800
B4524-E3	N/A	45.50	3.13	Self-Contained	Circuit #1	208-240	1	60	10.82	2,023	2+G	6-15P or L6-15P	N/A	N/A	N/A	900
B6624-E3	N/A	66.38	3.13	Self-Contained	Circuit #1	208-240	1	60	13.91	2,591	2+G	6-20P or L6-20P	N/A	N/A	N/A	1,100

*** Does not include electric defrost on freezer models.

Regulatory Approvals:

All Models
 Accordance with AHRI Std 1200
 ETL Listed to UL 471
 ETL Listed to CAN/CSA 22.2 No. 120
 ETL Sanitation to NSF 7



In Accordance with
AHRI Std 1200

DOE 2017
 Energy Efficiency
 Compliant

Important Notes:

- ELECTRICAL NOTE: If GFCI is required, a GFCI breaker MUST be used in lieu of a GFCI receptacle
- Performance issues (product temperatures, water on floor, etc.) caused by adverse conditions are not covered by warranty.
- Keep unit at least 15' from exterior doors, overhead HVAC vents, or any air curtain disruption.
- End panels must be tightly joined or kept at least 6" away from any structure to prevent condensation.
- Do not expose unit to direct sunlight or any heat source (ovens, fryers, etc.).
- Tile floors, low ceilings, or small rooms will increase noise level.

⚠ WARNING: This product can expose you to chemicals, including Urethane (Ethyl Carbamate), which are known to the State of California to cause cancer and birth defects or other reproductive harm. For more information go to www.P65Warnings.ca.gov.